

STA. 30+00--35+00 LT MAIN ST. : EXIST. 6" X TRU STEEL .188 W.T. MED. PRES. GAS INST. 9/24/70 W/WELD JOINTS. MAG. ANODE SYSTEM.

① STA. 31+42.75 12.2' LT ASKEW MAIN ST. : EXIST. 1-1/4" NOBLOW CURB VALVE TEE FOR 1" X TRU STEEL SCH. 40 M.P. SERVICE TO #536 MAIN ST.. MAG. ANODE SYSTEM.

⑦ STA. 31+41.1 36.4' LT MAIN ST. : TAP NEW 6" X TRU M.P. STEEL W/1-1/4" NOBLOW CURB VALVE TEE & RECONNECT TO EXIST. 1" X TRU STEEL M.P. SERVICE TO #536 MAIN ST.

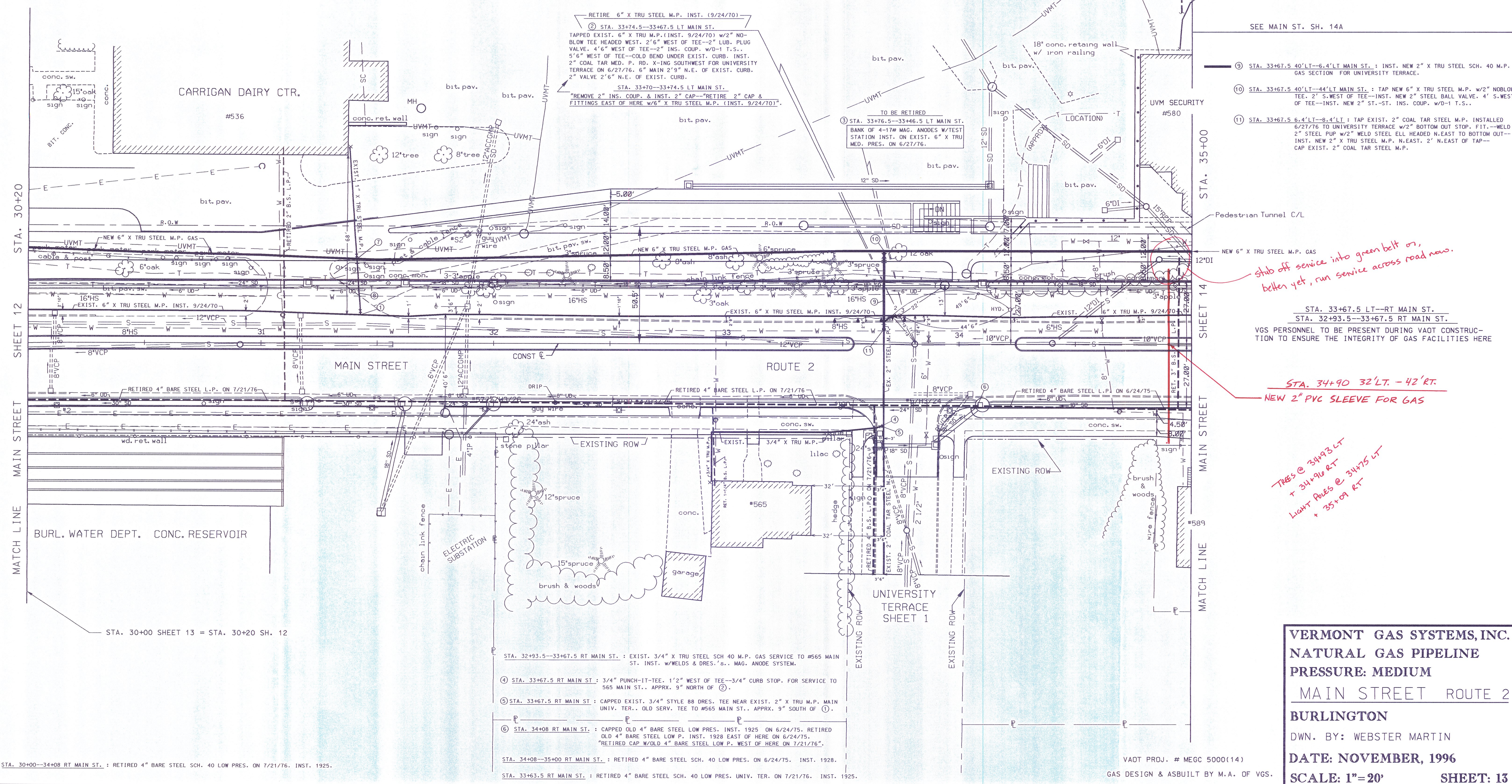
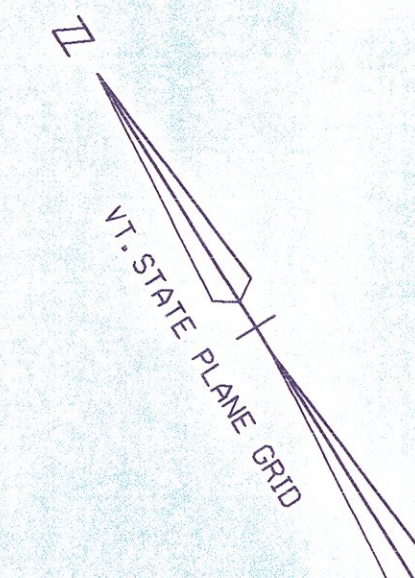
⑧ STA. 30+00--35+00 LT MAIN ST. : PROPOSED NEW 6" X TRU STEEL .188 W.T. MED. PRES. GAS W/WELD JOINTS. MAG. ANODE SYSTEM.

⑨ STA. 30+00--35+00 LT MAIN ST. : EXIST. 6" X TRU STEEL .188 W.T. MED. PRES. GAS TO BE RETIRED IN PLACE. INST. 9/24/70 W/WELD JOINTS.

STA. 33+67.5 LT--RT MAIN ST. : EXIST. 2" COAL TAR STEEL SCH. 40 MED. PRES. GAS INST. 6/27/76 W/POSITION FOR UNIVERSITY TERRACE. MAG. ANODE SYSTEM.

STA. 34+94.5 RT--LT MAIN ST. : RETIRED 3" BARE STEEL SCH. 40 LOW PRES. TO UVM EAST CAMPUS ON 6/24/75. INST. 1949.

UNIVERSITY OF VERMONT AND STATE AGRICULTURAL COLLEGE



RETIRE 6" X TRU STEEL M.P. INST. (9/24/70)  
② STA. 33+74.5--33+67.5 LT MAIN ST. : TAPPED EXIST. 6" X TRU M.P. (INST. 9/24/70) W/2" NO-BLOW TEE HEADED WEST. 2'6" WEST OF TEE--2" LUB. PLUG VALVE. 4'6" WEST OF TEE--2" INS. COUP. W/D-1 T.S.S. 5'6" WEST OF TEE--COLD BEND UNDER EXIST. CURB. INST. 2" COAL TAR MED. P. RD. X-ING SOUTHWEST FOR UNIVERSITY TERRACE ON 6/27/76. 6" MAIN 2'9" N.E. OF EXIST. CURB. 2" VALVE 2'6" N.E. OF EXIST. CURB.  
STA. 33+70--33+74.5 LT MAIN ST. : "REMOVE 2" INS. COUP. & INST. 2" CAP--"RETIRE 2" CAP & FITTINGS EAST OF HERE W/6" X TRU STEEL M.P. (INST. 9/24/70)!"

TO BE RETIRED  
③ STA. 33+76.5--33+66.5 LT MAIN ST. : BANK OF 4-17# MAG. ANODES W/TEST STATION INST. ON EXIST. 6" X TRU MED. PRES. ON 6/27/76.

⑨ STA. 33+67.5 40' LT--6.4' LT MAIN ST. : INST. NEW 2" X TRU STEEL SCH. 40 M.P. GAS SECTION FOR UNIVERSITY TERRACE.

⑩ STA. 33+67.5 40' LT--44' LT MAIN ST. : TAP NEW 6" X TRU STEEL M.P. W/2" NOBLOW TEE. 2' S. WEST OF TEE--INST. NEW 2" STEEL BALL VALVE. 4' S. WEST OF TEE--INST. NEW 2" ST.-ST. INS. COUP. W/D-1 T.S.S.

⑪ STA. 33+67.5 6.4' LT--8.4' LT : TAP EXIST. 2" COAL TAR STEEL M.P. INSTALLED 6/27/76 TO UNIVERSITY TERRACE W/2" BOTTOM OUT STOP. FIT--WELD 2" STEEL PIP W/2" WELD STEEL ELL HEADED N.EAST TO BOTTOM OUT--INST. NEW 2" X TRU STEEL M.P. N.EAST. 2' N.EAST OF TAP--CAP EXIST. 2" COAL TAR STEEL M.P.

*shut off service into green belt or, better yet, run service across road now.*

STA. 33+67.5 LT--RT MAIN ST.  
STA. 32+93.5--33+67.5 RT MAIN ST.  
VGS PERSONNEL TO BE PRESENT DURING VAOT CONSTRUCTION TO ENSURE THE INTEGRITY OF GAS FACILITIES HERE

*STA. 34+90 32' LT. - 42' RT.  
NEW 2" PVC SLEEVE FOR GAS*

*Trees @ 34+93 LT  
+ 34+96 RT  
Light Poles @ 34+75 LT  
+ 35+09 RT*

STA. 32+93.5--33+67.5 RT MAIN ST. : EXIST. 3/4" X TRU STEEL SCH 40 M.P. GAS SERVICE TO #565 MAIN ST. INST. W/WELDS & DRES.'S.. MAG. ANODE SYSTEM.

④ STA. 33+67.5 RT MAIN ST. : 3/4" PUNCH-IT-TEE. 1'2" WEST OF TEE--3/4" CURB STOP. FOR SERVICE TO 565 MAIN ST.. APPRX. 9" NORTH OF ②.

⑤ STA. 33+67.5 RT MAIN ST. : CAPPED EXIST. 3/4" STYLE 88 DRES. TEE NEAR EXIST. 2" X TRU M.P. MAIN UNIV. TER.. OLD SERV. TEE TO #565 MAIN ST.. APPRX. 9" SOUTH OF ④.

⑥ STA. 34+08 RT MAIN ST. : CAPPED OLD 4" BARE STEEL LOW PRES. INST. 1925 ON 6/24/75. RETIRED OLD 4" BARE STEEL LOW P. INST. 1928 EAST OF HERE ON 6/24/75. RETIRED CAP W/OLD 4" BARE STEEL LOW P. WEST OF HERE ON 7/21/76."

STA. 34+08--35+00 RT MAIN ST. : RETIRED 4" BARE STEEL SCH. 40 LOW PRES. ON 6/24/75. INST. 1928.

STA. 33+63.5 RT MAIN ST. : RETIRED 4" BARE STEEL SCH. 40 LOW PRES. UNIV. TER. ON 7/21/76. INST. 1925.

STA. 30+00--34+08 RT MAIN ST. : RETIRED 4" BARE STEEL SCH. 40 LOW PRES. ON 7/21/76. INST. 1925.

VAOT PROJ. # MEGC 5000(14)  
GAS DESIGN & ASBUILT BY M.A. OF VGS.

**VERMONT GAS SYSTEMS, INC.**  
**NATURAL GAS PIPELINE**  
**PRESSURE: MEDIUM**  
**MAIN STREET ROUTE 2**  
**BURLINGTON**  
 DWN. BY: WEBSTER MARTIN  
**DATE: NOVEMBER, 1996**  
**SCALE: 1"=20'** **SHEET: 13**