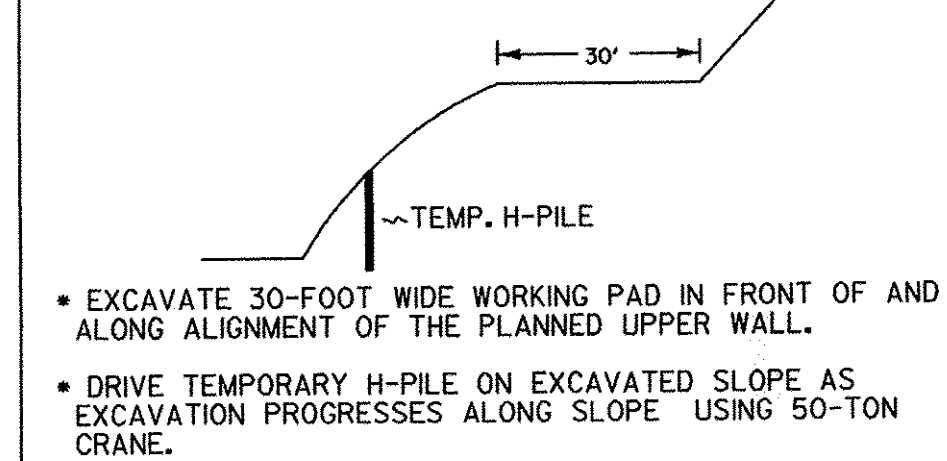


### CONSTRUCTION SEQUENCE

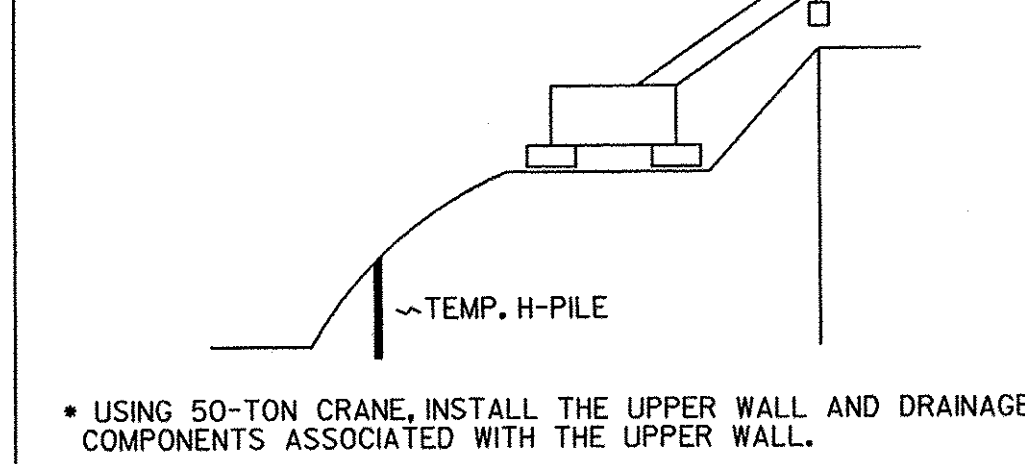
- 1.) EXCAVATE / CONSTRUCT A WORKING PAD APPROXIMATELY 30 FEET WIDE IN FRONT OF (I.E. TO THE WEST OF) AND ALONG THE ALIGNMENT OF THE PLANNED UPPER RETAINING WALL. DRIVE TEMPORARY H-PILES ON UNEXCAVATED SLOPE AS EXCAVATION PROGRESSES ALONG SLOPE USING A 50-TON CRANE THAT WILL MOVE ALONG THE WORKING PAD.
- 2.) USING THE SAME 50-TON CRANE THAT WILL MOVE ALONG THE WORKING PAD FROM STEP ONE, INSTALL THE UPPER RETAINING WALL AND DRAINAGE COMPONENTS ASSOCIATED WITH THE UPPER RETAINING WALL.
- 3.) EXCAVATE TO BOTTOM OF STONE FILL GRADE FROM THE UPPER RETAINING WALL DOWN TO THE ELEVATION OF THE TOP OF THE LOWER WALL IN APPROXIMATELY 25-FOOT SECTIONS. CREATE A WORKING PAD AT THE ELEVATION OF THE TOP OF THE LOWER RETAINING WALL, WHICH WILL RESULT IN A BERM IN FRONT OF THE LOWER RETAINING WALL ALIGNMENT. THIS BERM WILL BE LEFT IN PLACE UNTIL AFTER STEP 7 IS COMPLETED.
  - A. INSTALL DRAINAGE COMPONENTS BEHIND ALIGNMENT OF LOWER RETAINING WALL.
  - B. FILL IN 25-FOOT CUT SECTION WITH TYPE II ROCK FILL.
- 4.) INSTALL LOWER RETAINING WALL.
- 5.) CREATE TYPE II ROCKFILL WORKING PAD MID-SLOPE BETWEEN THE UPPER AND LOWER RETAINING WALLS.
- 6.) INSTALL THE PRE-CAST CONCRETE PANELS ON THE UPPER RETAINING WALL USING 50-TON CRANE MOVING ALONG WORKING PAD. CONSTRUCT CAST-IN-PLACE CONCRETE COPING ON TOP OF WALL.
- 7.) INSTALL GRUBBING AND REMOVE THE ROCKFILL WORKING PAD AS GRUBBING IS PLACED.
- 8.) EXCAVATE IN FRONT OF (I.E. TO THE WEST OF) THE LOWER RETAINING WALL AND REMOVE TEMPORARY PILES.
- 9.) INSTALL DRAINAGE COMPONENTS IN FRONT OF THE LOWER RETAINING WALL.
- 10.) INSTALL THE PRE-CAST CONCRETE PANELS ON THE LOWER RETAINING WALL. CONSTRUCT CAST-IN-PLACE CONCRETE COPING ON TOP OF WALL.

IN GENERAL, FOR ANY AND ALL EXCAVATION THAT IS REQUIRED IN FRONT OF WALLS, THE CONTRACTOR SHOULD EXCAVATE AND BACK FILL IN SECTIONS NOT GREATER THAN 25 FEET WIDE, WHERE REQUIRED BY OSHA, OR AS OTHERWISE STATED (E.G. IN FRONT OF THE LOWER WALL), TRENCH BOXES MUST BE USED WHEN EXCAVATING.

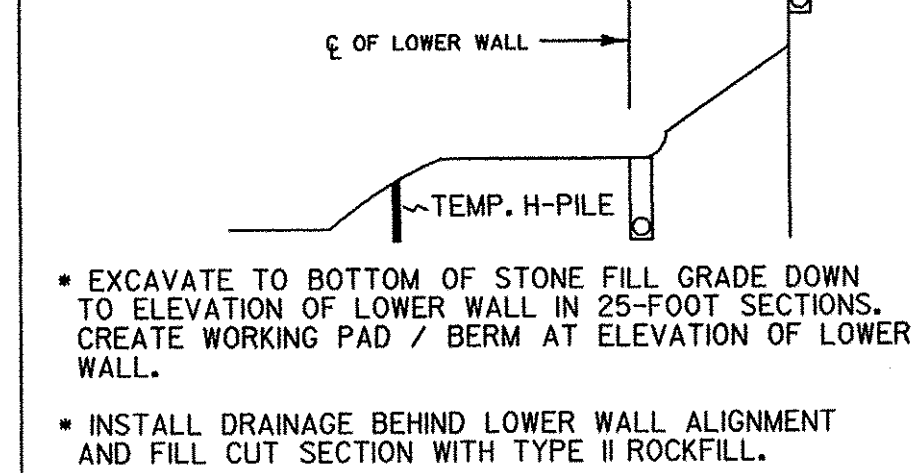
#### STEP 1



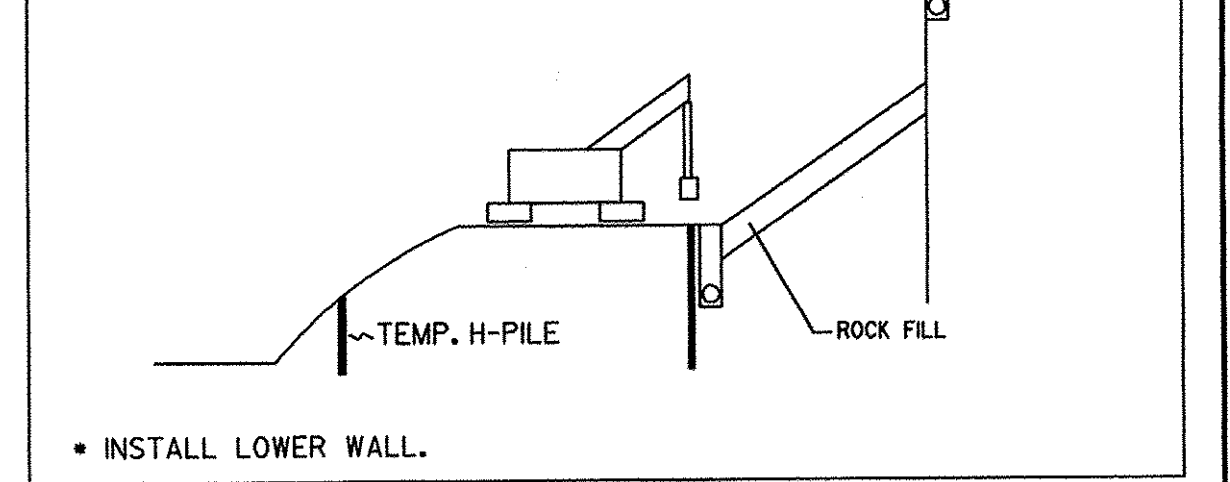
#### STEP 2



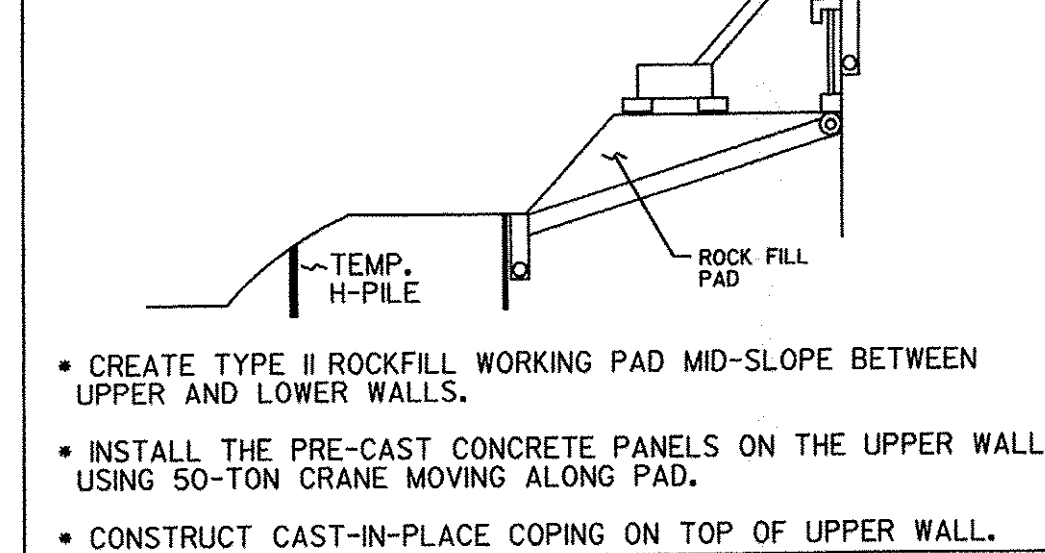
#### STEP 3



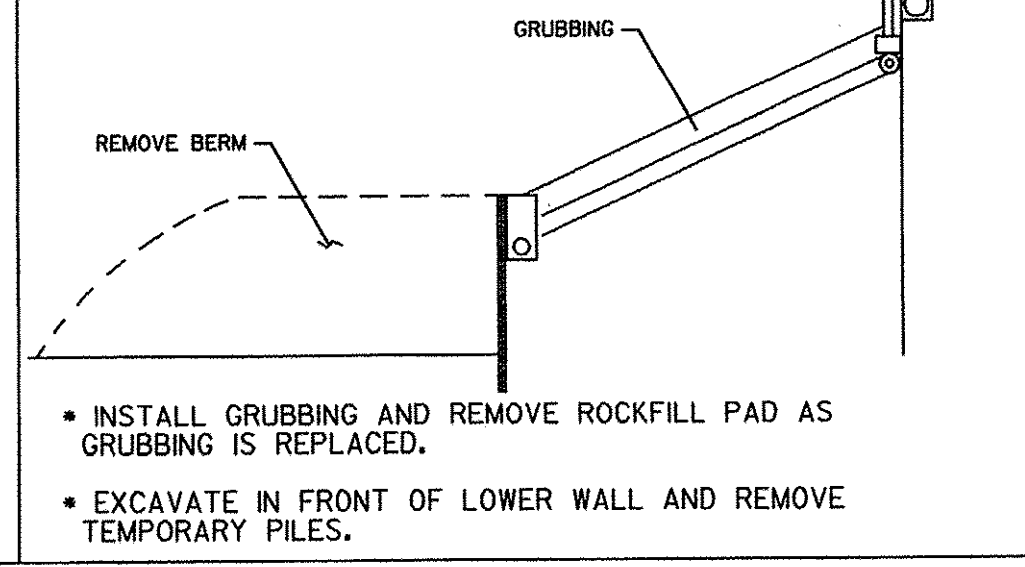
#### STEP 4



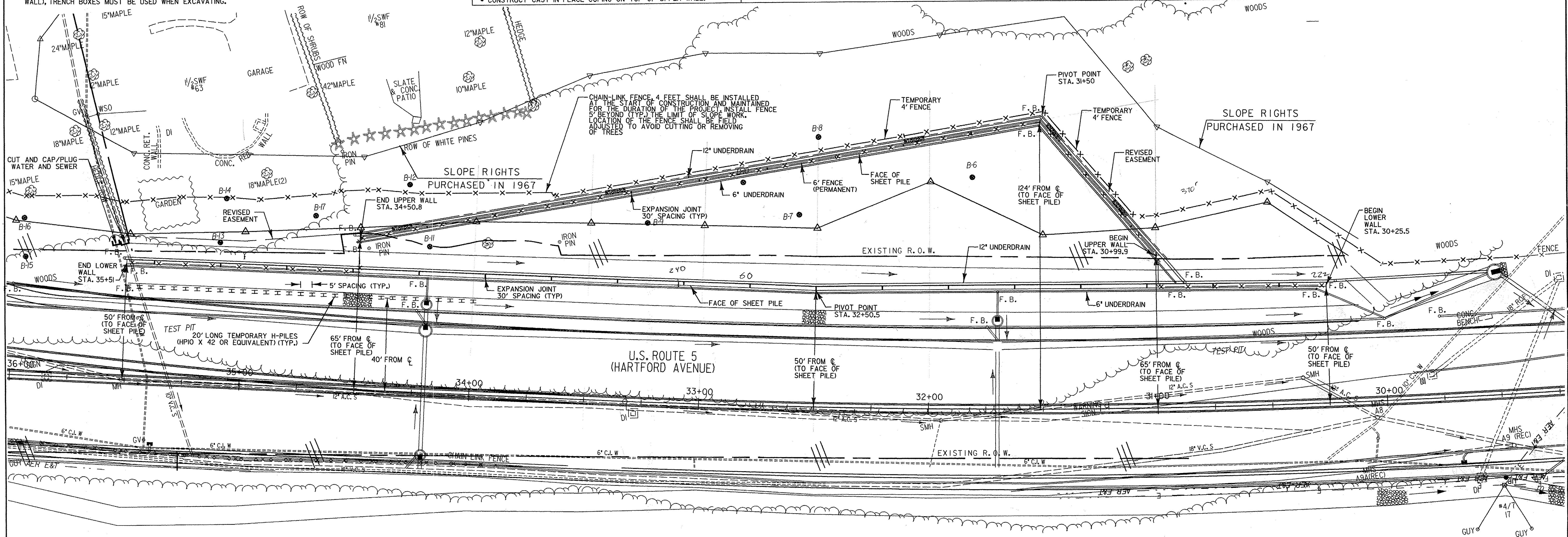
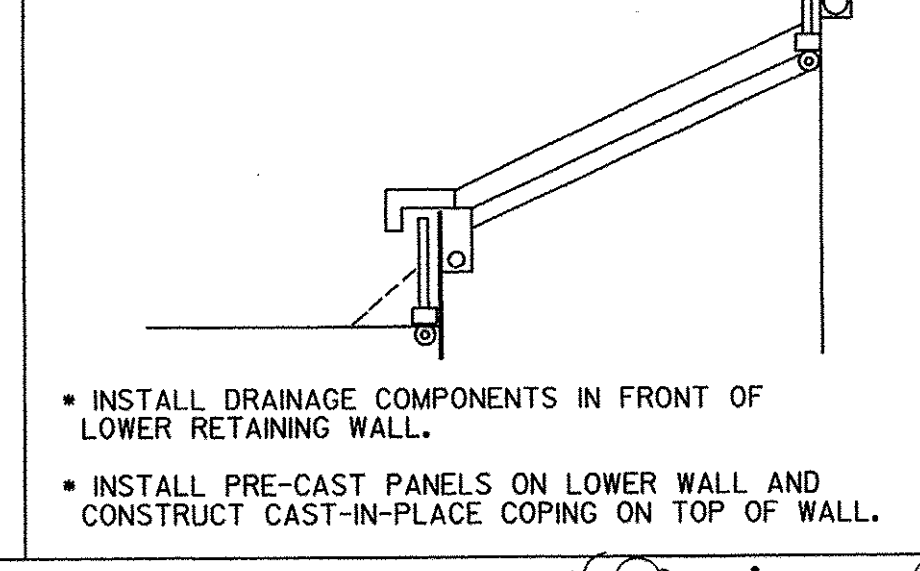
#### STEP 5 & 6



#### STEP 7 & 8



#### STEP 9 & 10



## PLAN VIEW - SHEET PILE WALL

- NOTE:
1. PROPOSED WATER AND SEWER LAYOUT NOT SHOWN.
  2. WALL OFFSETS TO FACE OF SHEET PILE.

PROJECT: <b>HARTFORD</b>	PROJECT NO.: <b>RS 0113(40)</b>
DESIGN FILE NAME: ...z86c027\wallde+.DGN	PLOT DATE: 3/13/2008
IPARM FILE NAME:	SURVEY DATE: 1/87
MODIFIED FROM ORIGINAL	DRAWN BY: G. BARRETT
PLAN SET.	SHEET: 2 OF 14

DATUM	
VERTICAL	NGVD 1929
HORIZONTAL	N/A

