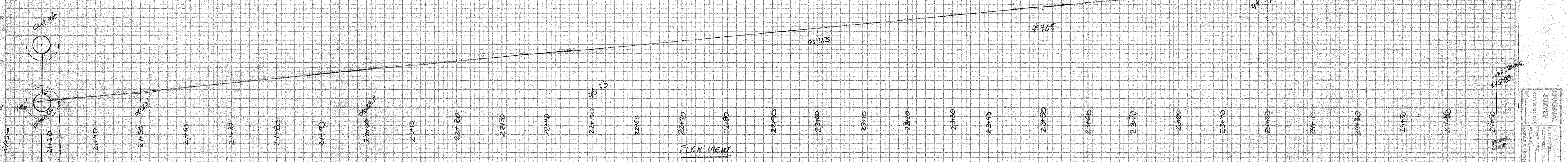
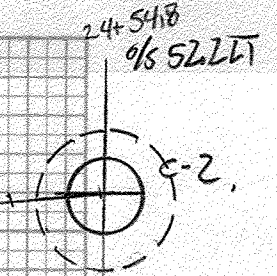


SEWER 1A 21+28 0/S 34' LT TO 24+50.88 LT 0/S 52.2  
 BC 9/9-10/08

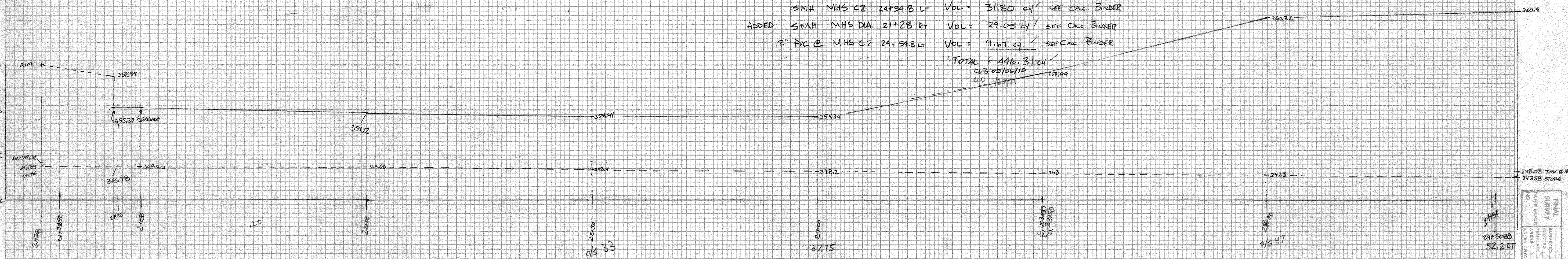
7.84' @ LIMITS OF  
 M.H.S.  
 1/2" = 3.92'



PLAN VIEW

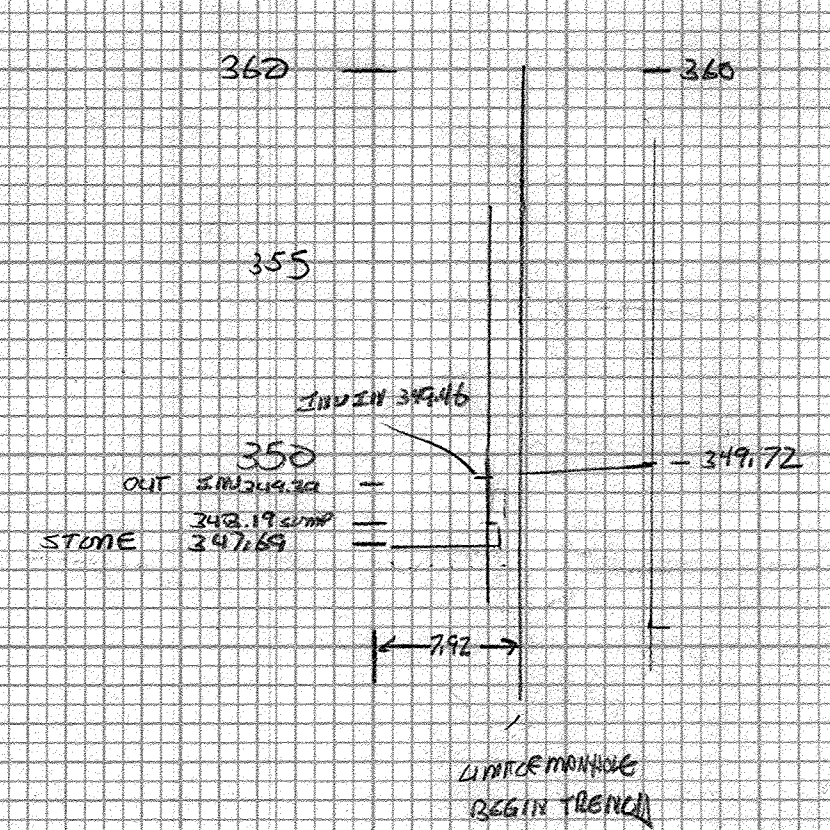
TRENCH EXCAVATION OF EARTH

- PIPE @ 21+28 LT Vol = 10.88 cy ✓
- ADDED 6" M.H. 21+28 LT Vol = 29.13 cy ✓
- PIPE @ 21+28-24+50.88 LT Vol = 335.78 cy ✓
- SMH M.H.S. C2 24+50.88 LT Vol = 31.80 cy ✓ SEE CALC. BINDER
- ADDED 6" M.H. DIA 21+28 LT Vol = 29.05 cy ✓ SEE CALC. BINDER
- 12" PVC C. M.H.S. C2 24+50.88 LT Vol = 9.67 cy ✓ SEE CALC. BINDER
- TOTAL = 446.31 cy ✓
- CUB 05/10/10
- LED 1/1/11



STATION	TRENCH EXCAVATION OF EARTH		TRENCH EXCAVATION OF EARTH		TRENCH EXCAVATION OF EARTH		LENGTH	CY	CY @ 150%
	OG SURFACE	GRADE	LT	Avg. HT	S	Z			
21+31.92	360	348.29	11.11'	10.61'	5'	2.5'	2.7'	13.08	6.54 ✓ 11.01 ✓
21+45	358.89	348.70	10.11'	6.35'	5'	1.36'	2.7'	55.0	27.5 ✓ 11.22 ✓
21+45	355.37	348.70	6.59'	6.07'	5'	1.07'	2.7'	50.0	25.0 ✓ 8.03 ✓
22+00	354.72	348.60	6.12'	6.08'	5'	1.08'	2.7'	50.0	25.0 ✓ 8.10 ✓
22+50	354.41	348.40	6.01'	6.08'	5'	1.08'	2.7'	50.0	25.0 ✓ 8.10 ✓
23+00	354.34	348.2	6.14'	6.08'	5'	1.08'	2.7'	50.0	25.0 ✓ 8.10 ✓
23+50	358.99	348.0	10.99'	11.76'	5'	6.76'	2.7'	50.0	25.0 ✓ 50.7 ✓
24+00	360.32	347.8	12.52'	12.92'	5'	7.92'	2.7'	50.88	25.44 ✓ 60.46 ✓
24+50.88	360.90	347.58	13.32'	12.92'	5'	7.92'	2.7'	50.88	25.44 ✓ 60.46 ✓

EXCAVATION OF ADDITIONAL SEWER MANHOLE, 21+28 LT



TRENCH EXCAVATION OF EARTH  
 $360 - 347.69 = 12.31$  ✓  
 $(7.92/2) \times \pi \times 5 \times 2.7 = 9.12$  ✓  
 $(7.92/2) \times \pi \times 7.31/2 \times 150\% = 20.01$  ✓  
 29.13 cy ✓  
 PIPE EXCAVATION 21+28 LT  
 $360 - 348.46 = 10.54$  ✓ 10.4 ✓  
 $360 - 349.72 = 10.28$  ✓  
 $5 \times 3.28 \times 6.83 \times 2.7 = 4.15$  ✓  
 $5.41 \times 3.28 \times 6.83 \times 1.27 \times 1.50 = 6.73$  ✓  
 10.88 cy ✓

PIPE	HT
9" DIA	39 LF
12" DIA	76
18" DIA	72
24" DIA	86
30" DIA	39
36" DIA	18.5
TOTAL	330.5 LF ✓

TOTAL SEWER 1A 324.77 cy ✓ 335.78  
 29.13 ✓  
 10.88 ✓  
 364.78 BC 9/10/08  
 395.79 ✓  
 1.50 ✓

SEWER 2A - SEE DAILY REPORT FOR 8/28/08

TRENCH EXC = 9.58 cy ✓  
 34' CURBED STONE = .95 TONS ✓  
 8" PVC SEWER = 7.0 LF ✓