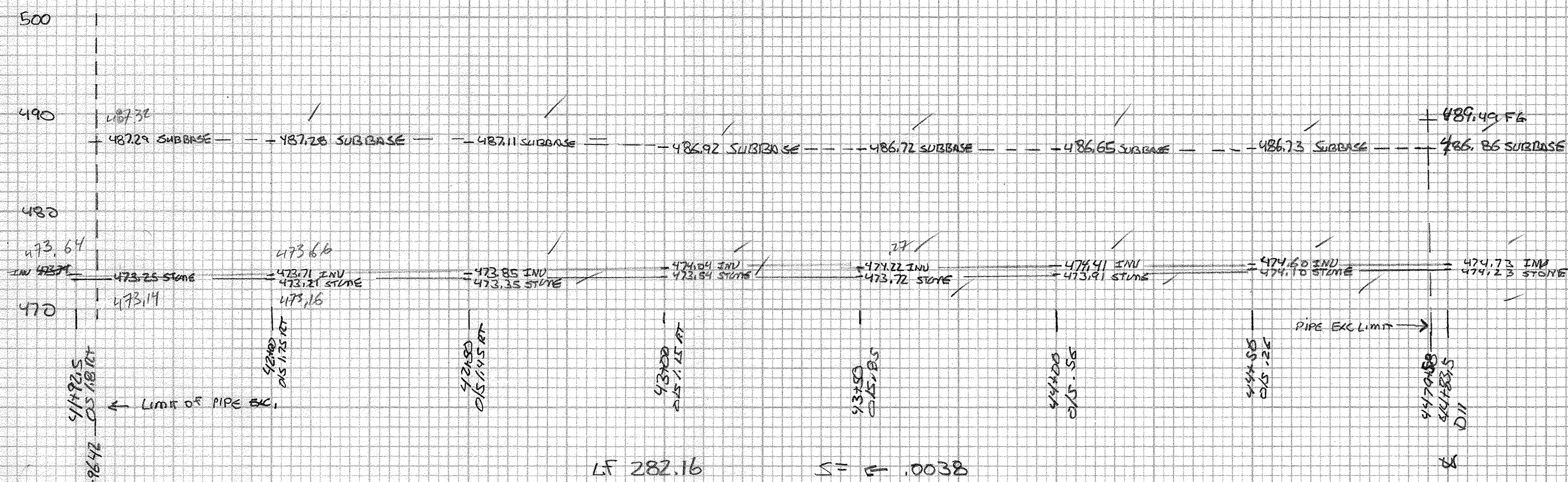


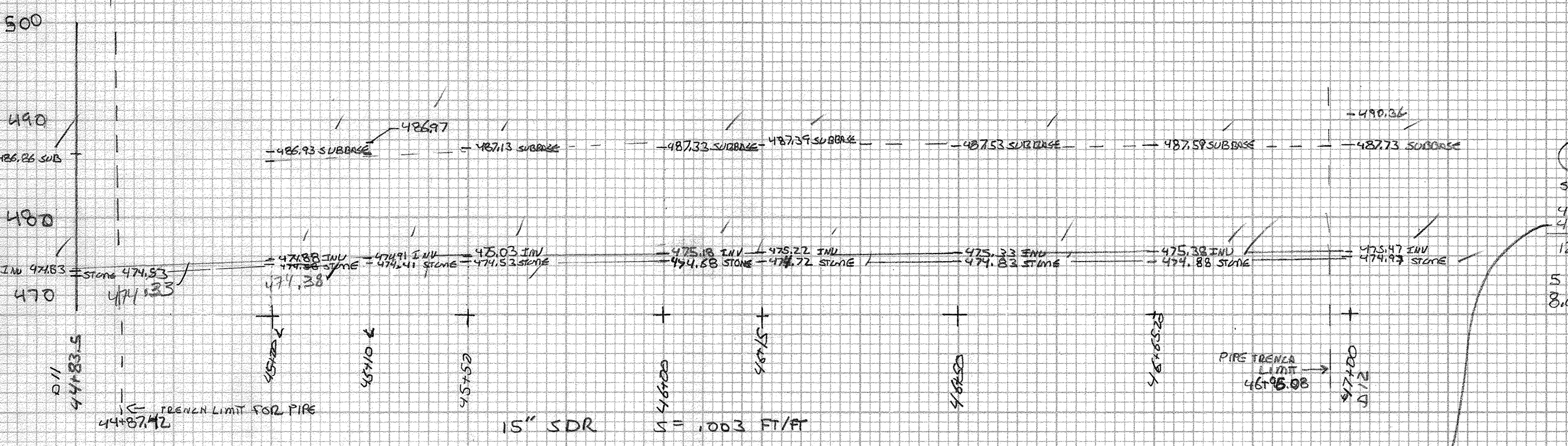
20 STATION 41+92.5 O/S 7.8 RT TO 44+83.5 ♀ 291 LF
 MNS D10 (MOD-OUTSIDE DROP)



ITEM 20420	TRENCH EXCAVATION OF EARTH	CORRECT WIDTH FOR OLD		LENGTH	CY	150%	CY	150%
		3.28'	3.28'					
STATION	HEIGHT	AUGHT	±5'	±5'				
41+96.42	14.04	14.06	5	9.06	3.28	3.28	2.15	2.15
42+00	14.07	13.92	5	8.92	3.28	3.58	5.86	5.91
42+50	13.76	13.57	5	8.57	3.28	5.0	30.09	30.37
43+00	13.38	13.19	5	8.19	3.28	5.0	30.09	30.37
43+50	13.00	12.87	5.0	7.87	3.28	5.0	30.09	30.37
44+00	12.74	12.69	5	7.69	3.28	5.0	30.09	30.37
44+50	12.63	12.63	5	7.63	3.28	5.0	30.09	30.37
44+79.58	12.63	12.63	5	7.63	3.28	27.58	17.80	17.97
					170.40	328.13	562.53	41.13

EXCAVATION OF MNS D10 TO BE BASED ON SHOP DWGS.
 ITEM 20430 GRANULAR BACKFILL FOR STRUCTURES (283.16 x 5.5 + 1) x 3.28 x 1.13 x 1.27 = 39.23 BL 51107
 UNDER MNS D10 = 1.52 CY RD 5/15/07

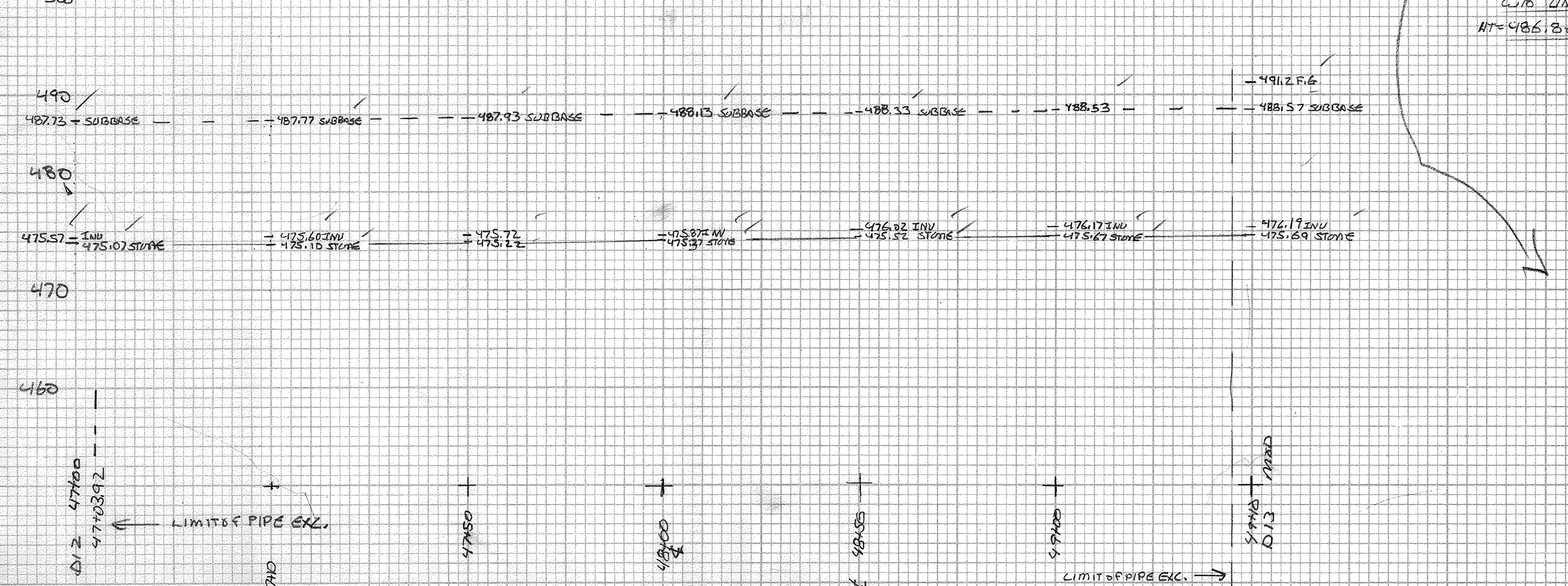
21 44+83.5 ♀ TO 47+00 ♀ 216 LF
 (MNS D11 MOD-OUTSIDE) MNS D12



ITEM 20420	TRENCH EXCAVATION OF EARTH	CORRECT WIDTH FOR OLD		LENGTH	CY	150%	CY	150%
		3.28'	3.28'					
STATION	HEIGHT	AUGHT	±5'	±5'				
44+87.42	12.33	12.33	5	7.28	3.28	12.58	7.64	17.28
45+00	12.35	12.35	5	7.28	3.28	12.58	7.64	16.87
45+10	12.56	12.56	5	7.46	3.28	10.0	6.07	13.77
45+50	12.60	12.58	5	7.58	3.28	40	24.29	20.65
46+00	12.65	12.67	5	7.63	3.28	50	30.09	25.57
46+15	12.67	12.68	5	7.67	3.28	15	9.11	7.88
46+50	12.70	12.70	5	7.68	3.28	15.2	9.23	8.08
46+65.20	12.71	12.73	5	7.68	3.28	15.2	9.15	9.15
46+75.08	12.76	12.73	5	7.73	3.28	30.88	19.76	21.08
					30.88	48.59	43.50	43.70

EXCAVATION OF MNS D11 TO BE BASED ON SHOP DWGS.
 F.M. BASE OF .85 BELOW INVERT OUT
 $5.5 \times (7.83/2) \times 1.27 = 8.92$ CY
 $7.88 \times (7.83/2) \times 1.27 \times 150\% = 21.28$ CY
 30.20 CY BL 711607

27 47+00 ♀ TO 49+10 ♀ (210 LF)
 (MNS D12) MNS D13 (MOD) OUTSIDE DROP



ITEM 20420	TRENCH EXCAVATION OF EARTH	CORRECT WIDTH FOR OLD		LENGTH	CY	150%	CY	150%
		3.28'	3.28'					
STATION	HEIGHT	AUGHT	±5'	±5'				
47+03.92	12.66	12.65	5	7.65	3.28	6.08	3.69	8.49
47+10	12.67	12.69	5	7.69	3.28	6.08	3.69	8.49
47+50	12.71	12.73	5	7.73	3.28	40	24.30	56.05
48+00	12.76	12.69	5	7.69	3.28	50	30.37	70.47
48+50	12.81	12.78	5	7.78	3.28	50	30.37	70.93
49+00	12.86	12.83	5	7.83	3.28	50	30.37	71.34
49+06.08	12.88	12.87	5	7.87	3.28	6.08	3.69	8.72
					122.79	285.46	408.25	408.25

EXCAVATION OF MNS D12 TO BE BASED ON SHOP DWGS.
 ITEM 20430 GRANULAR BACKFILL FOR STRUCTURES (202.16 LF + 5.11 + 5.11) x 3.28 x 1.13 x 1.27 = 28.11 CY BL 51107
 3.28 UNDER MNS D12 = 1.20 CY

ORIGINAL SURVEY
 SURVEY
 NOTE BOOK
 NO. 11111
 DATE

FINAL SURVEY
 SURVEY
 NOTE BOOK
 NO. 11111
 DATE