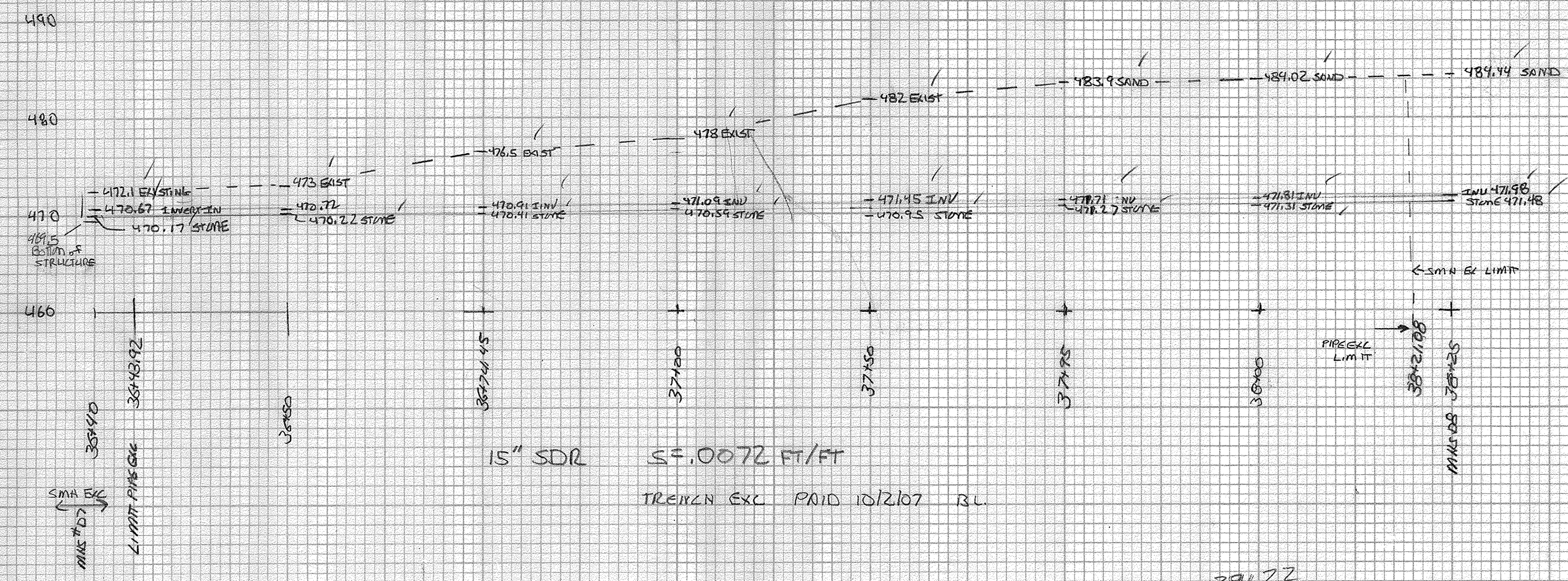


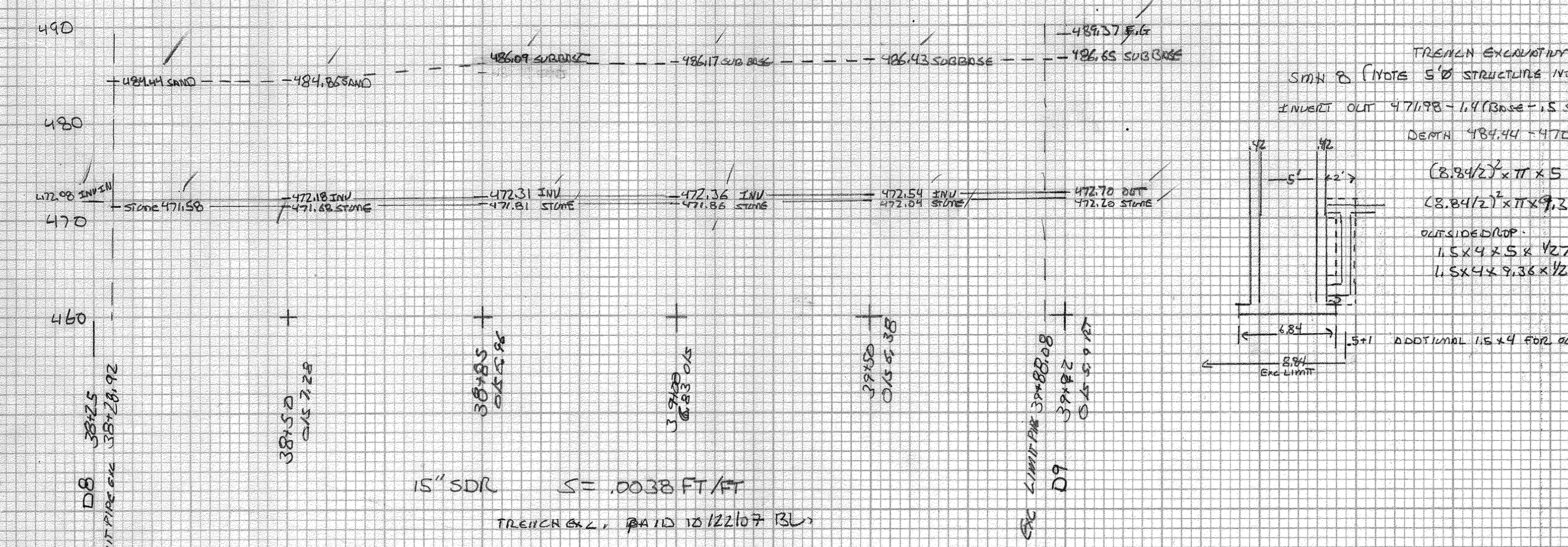
⑧ STATION 36+40 O/S 7.5 RT TO 38+25 O/S 7.5 RT
MNS D7 SMA-D8 mod- outside D10P



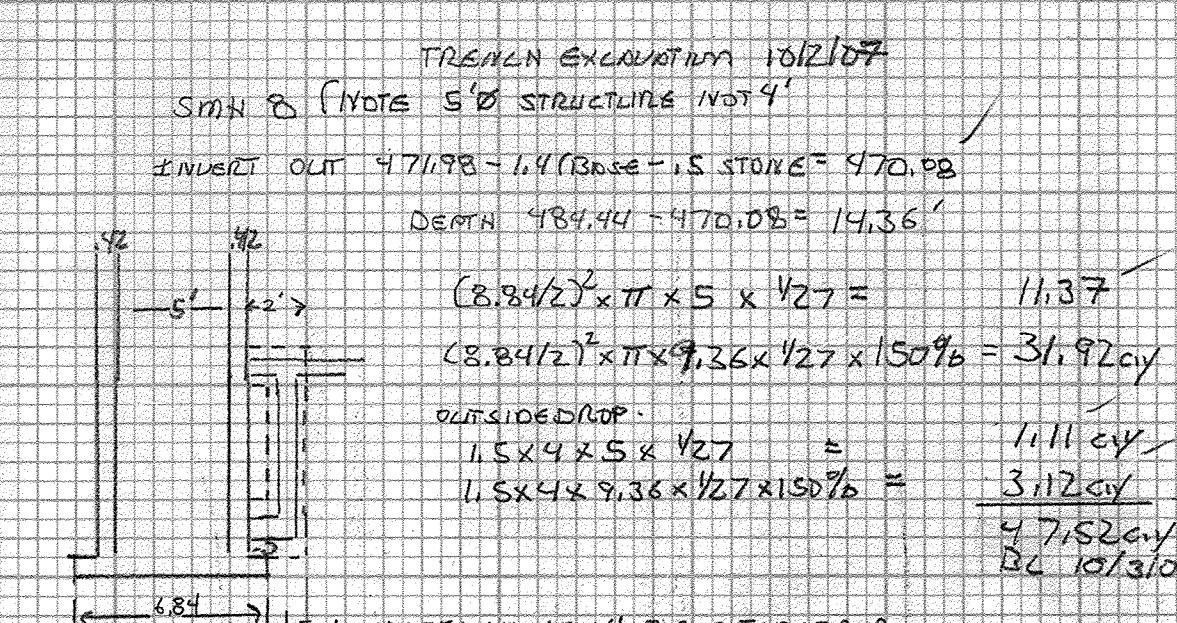
STATION	HEIGHT	DEPTH	WIDTH	LENGTH	C.Y.	150%	C.Y.
36+43.92	1.93	2.36	3.28	6.08	1.23		1.74
36+50	2.78	4.44	3.28	21.45	13.27		13.19
36+74.45	6.09	6.75	3.28	25.55	15.38	150%	15.52
37+00	7.41	7.23	3.28	50	30.09	150%	30.37
37+50	11.05	11.84	3.28	50	38.19	150%	38.54
37+95	12.63	12.67	3.28	45	27.89	150%	27.33
38+00	12.71	12.84	3.28	5	3.01	150%	3.04
38+21.08	12.96	7.84	3.28	21.08	12.68	150%	12.80
					242.44		30.12
					241.65		

TOTAL 103.99 + 13.99
= 243.89 cy
BL 5/12/07
C.S. RETAINED FOR O.D.

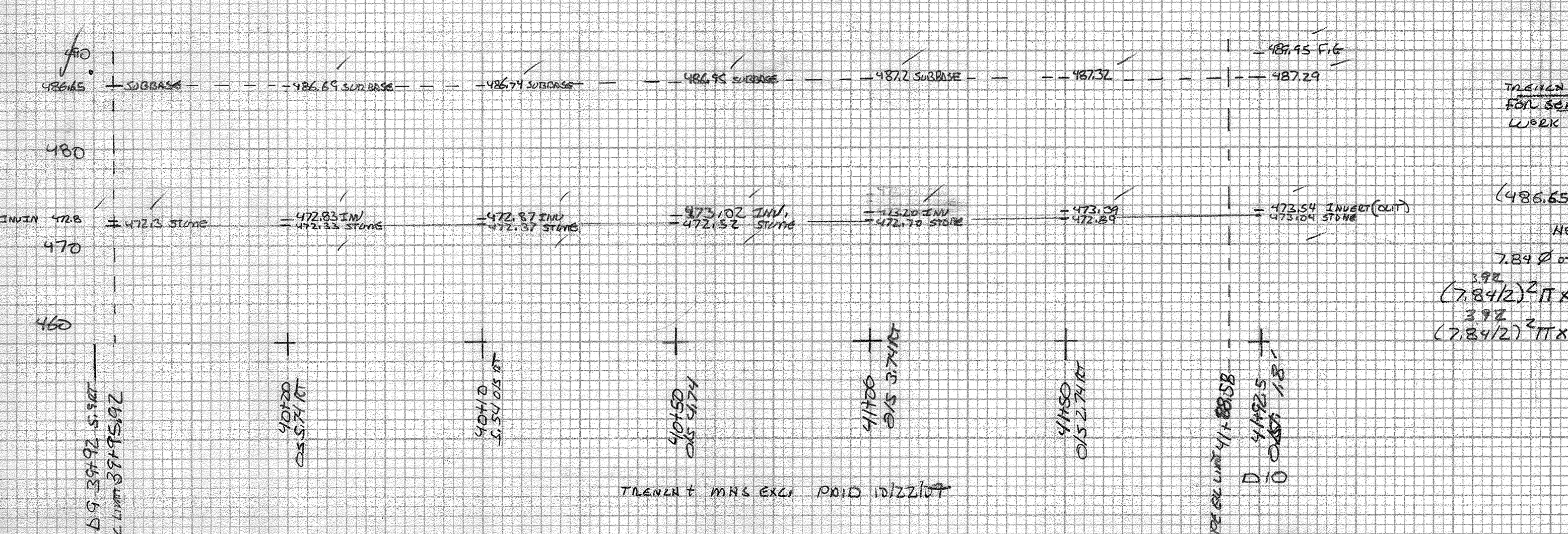
⑨ STATION 38+25 O/S 7.5 RT TO 39+92 O/S 5.9 RT 167 LF
MNS D9



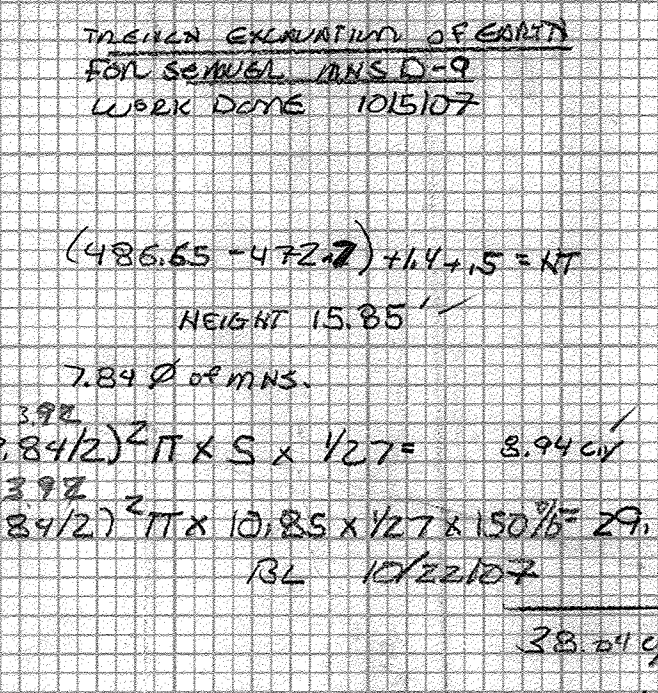
STATION	HEIGHT	DEPTH	WIDTH	LENGTH	C.Y.	150%	C.Y.
38+28.92	12.86	13.02	3.28	21.08	12.69		12.80
38+50	13.18	13.73	3.28	35.00	21.06		21.25
38+85	14.28	14.30	3.28	15.00	9.03		9.11
39+00	14.31	14.35	3.28	50.00	30.09		30.37
39+50	14.39	14.42	3.28	50.00	30.09		30.37
39+88.08	14.45	9.42	3.28	38.08	22.92		23.13
					96.67		96.67
					262.97		262.97



⑩ 39+92 O/S 5.9 RT TO 41+92.5 O/S 18 RT 200.5 LF
MNS 9



STATION	HEIGHT	DEPTH	WIDTH	LENGTH	C.Y.	150%	C.Y.
39+95.92	14.35	14.35	3.28	4.08	2.98		2.98
40+00	14.36	14.36	3.28	10	6.02		6.07
40+10	14.37	14.4	3.28	40	24.07		24.30
40+50	14.43	14.47	3.28	50	30.09		30.37
41+00	14.50	14.47	3.28	50	30.09		30.37
41+50	14.43	14.34	3.28	38.58	23.22		23.43
41+88.58	14.25	9.34	3.28	38.58	23.22		23.43
					118.95		117.02
					327.73		330.77



TOTAL 447.79 cy
BL 5/12/07
BL 5/17/07
BL 10/4/07

STATION	HEIGHT	DEPTH	WIDTH	LENGTH	C.Y.	150%	C.Y.
41+92.5	14.25	9.34	3.28	38.58	23.22		23.43
					118.95		117.02
					327.73		330.77

ORIGINAL SURVEYING NOTE BOOK NO. 1012107 DATE

FINAL SURVEYING NOTE BOOK NO. 1012107 DATE