

Item 204.20 TRENCH EXCAVATION EXCLUDING MAIN HOLES.

① (351.8-351.42) x 10.52 x 3.28 x 1/27 = 1.87 cy
 3.28 x 10.52 x 1/27 = 1.87 cy
 1.87 cy

② (352.17-355.97) + (352.08-355.92) / 2 x 3.28 x 3.08 x 1/27 = 1.68 cy
 6.16 Ave = 6.22
 3.35 x 3.28 x 1/27 = 1.68 cy

(358.77-355.92) + (359.5-355.95) / 2 x 3.28 x 8 x 1/27 = 2.23 cy
 3.65 x 3.28 x 1/27 = 2.23 cy

(359.75-355.97) + (362.5-356.02) / 2 x 3.28 x 10 x 1/27 = 5.26 cy
 3.78 x 3.28 x 1/27 = 5.26 cy

(360.5-356.02) + (361.4-356.06) / 2 x 3.28 x 12.08 x 1/27 = 7.31 cy
 4.98 x 3.28 x 1/27 = 7.31 cy

② @ 1.5 = .5 (127 + 116) x 3.28 x 3.08 x 1/27 = 1.4 cy

22.52 cy
 1.4 cy
 22.66 cy

CP# 1/29/08

⑤ 24+95 - 26+00 RT

Item 204.20 TRENCH EXCAVATION EXCLUDING MAIN HOLES.

(5.9 + 12.18/2) x 3.28 x 92.16 x 1/27 = 185.77 cy
 106.70 cy

Exc FOR D2 BASED ON SHOP DRAWING DEPTH

Item 204.30 GRANULAR BACKFILL FOR STRUCTURES

PIPE BEDDING 3.25 x 1.13 x (97.16 + 5 + 10) x 1/27 = 173.75 cy

BELOW STRUCTURE D2 24+95 - 25+00

8.84 DIRT x .67 BASE = 5.92 cy

17.22 cy

16.96 cy

CP# 1/28/08

NEW SEWER #2
 204.20

MHSD-1 Vol = 26.4 cy + 1.11 cy = 27.51 cy
 PIPE 24+64 - 24+95 RT Vol = 20.22 cy
 S = 47.73 cy @ 805 ft/10

④ 26+00 RT - 27+50 RT 150'

Item 204.20 TRENCH EXCAVATION EXCLUDING MAIN HOLES - DEPTH TO BE DETERMINED BY SHOP DRAWINGS.

(5.88 + 6.26/2) x 3.25 x 142.16 x 1/27 = 103.07 cy
 3.28 x 142.16 x 1/27 = 171.11 cy

Item 204.30 GRANULAR BACKFILL FOR STRUCTURES

3.25 x 1.13 x (142.16 + 5 + 10) x 1/27 = 19.74 cy

BASE OF MHSD-3 = 4.52 cy

1.20 cy

CP# 1/29/08

NEW SEWER #4
 204.20

MHSD-3 Vol = 35.79 cy SEE CALL BINDER
 PIPE 26+00 - 27+50 Vol = 119.07 cy
 S = 149.86 cy @ 805 ft/10

⑤ 27+50 TO 30+30 RT

Item 204.20 TRENCH EXC

(5.85 + 2.8/2) x 3.25 x 272.16 x 1/27 = 144.69 cy

Exc FOR D4 DEPTH BASED ON SHOP DRAWING

Item 204.30 GRANULAR BACKFILL

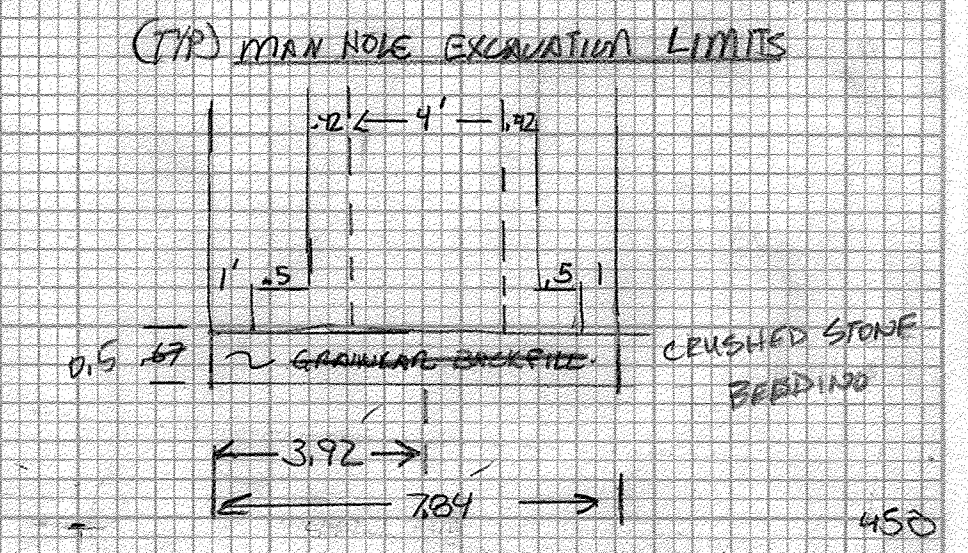
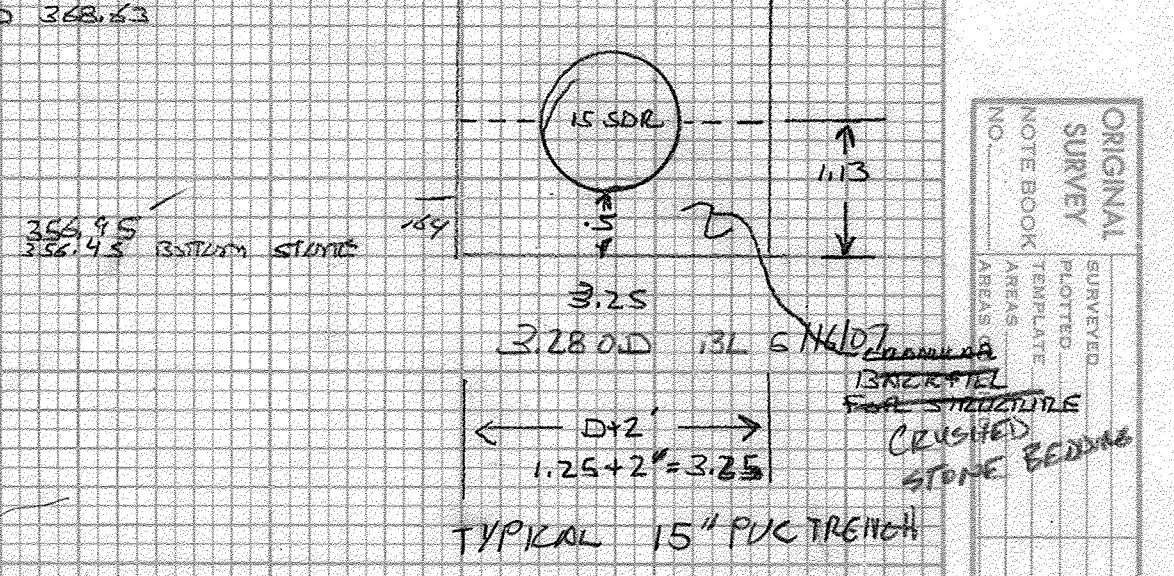
(272.16 + 5 + 10) x 3.25 x 1.13 x 1/27 = 37.77 cy

BELOW STRUCTURE

1.20 cy

NEW SEWER #5
 ITEM 204.20

MHSD-4 Vol = 16.07 cy
 PIPE 27+50 - 30+30 Vol = 142.99 cy
 S = 159.06 cy @ 805 ft/10



MHS EXCAVATION OF D2 SEWER

361.73 - 356.53 = 5.20' DEPTH

5' x (2.84/2) x 1.27 = 2.85 cy

2.3 (2.84/2) x 1.27 x 1.27 = 1.95 cy

4.80 cy

CP# 05/06/10

Excavation of SEWER MANHOLE #4

382.21 SAND

INVERT OUT 377.05

= 1.470 BASE

= .5 TO BOTTOM STONE

7.62 RT

(2.84 DIA) x 7.84 x 1/27 = 8.94 cy

(2.84) x 7.84 x 1/27 x 1.50 = 7.13 cy

16.07 cy

RL 5/15/07

ORIGINAL SURVEY AREA

NO. 1

DATE

FINAL SURVEY AREA

NO. 2

DATE