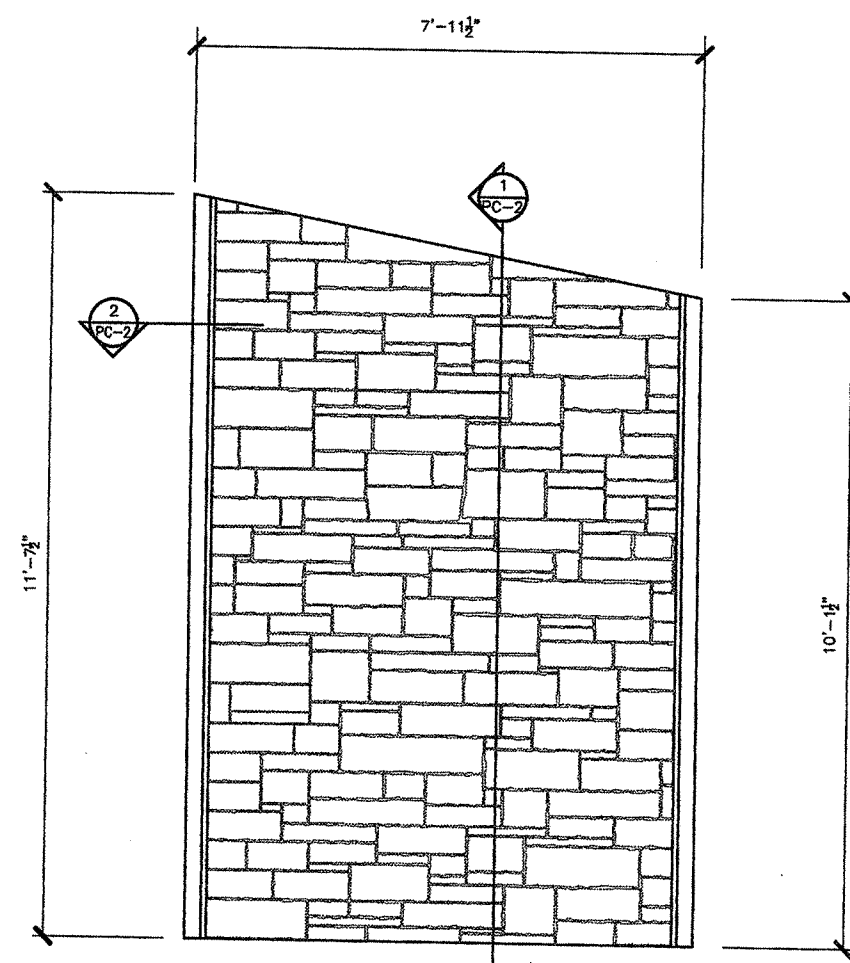
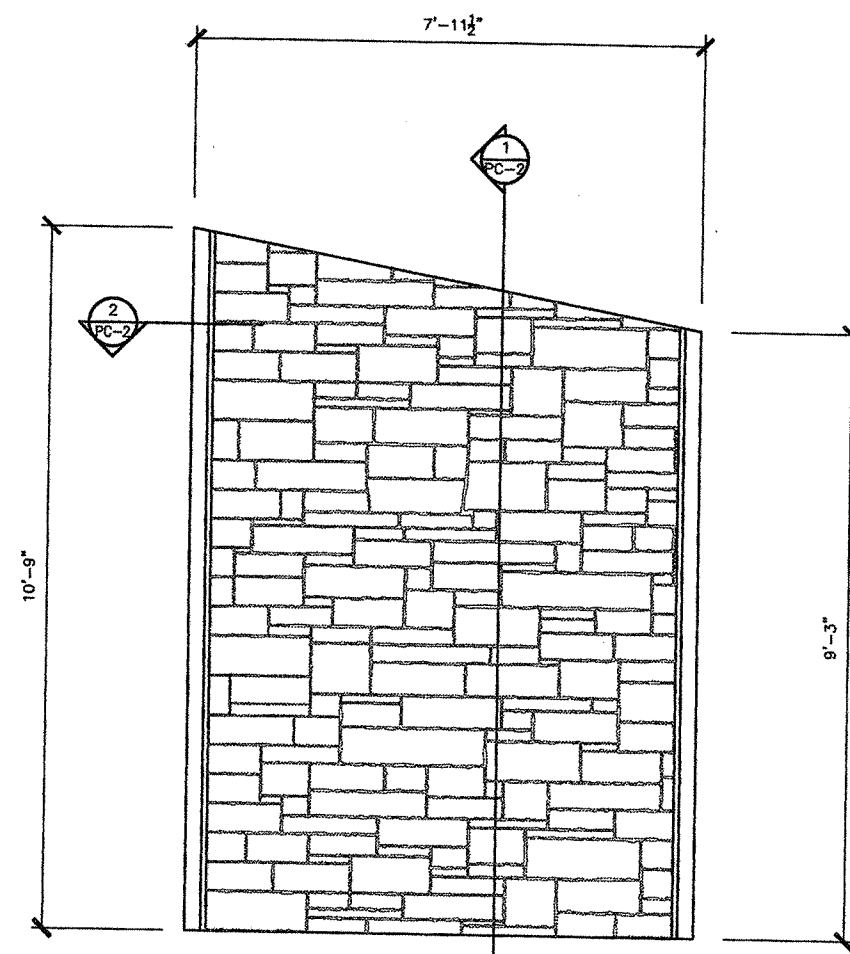


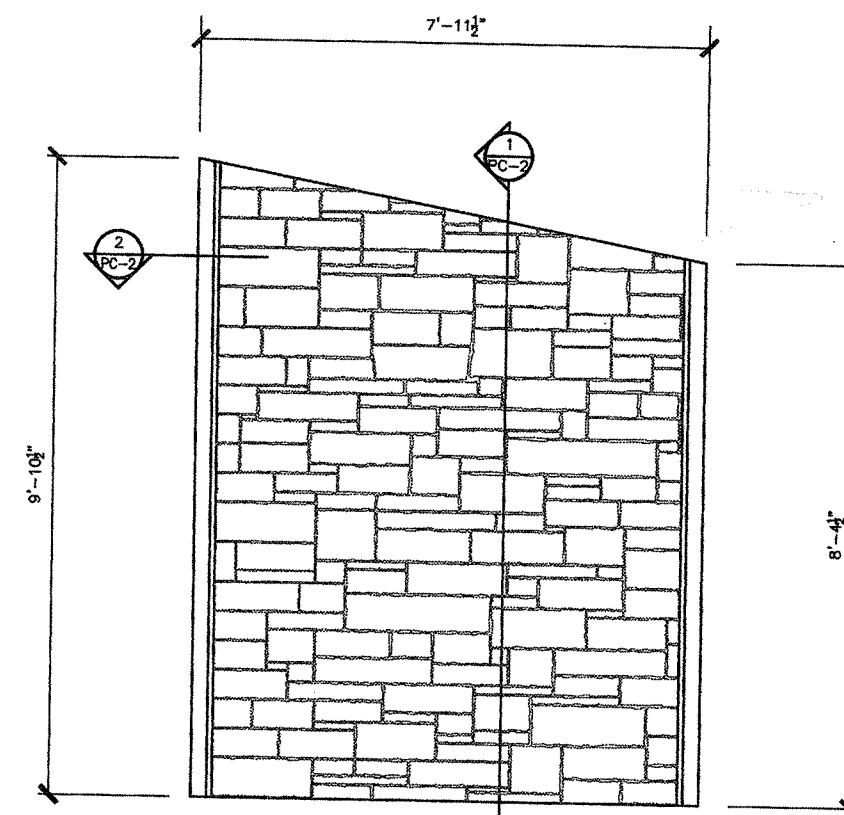
ELEVATION PC45 (1 pc)
 $\frac{1}{2}'' = 1'-0''$



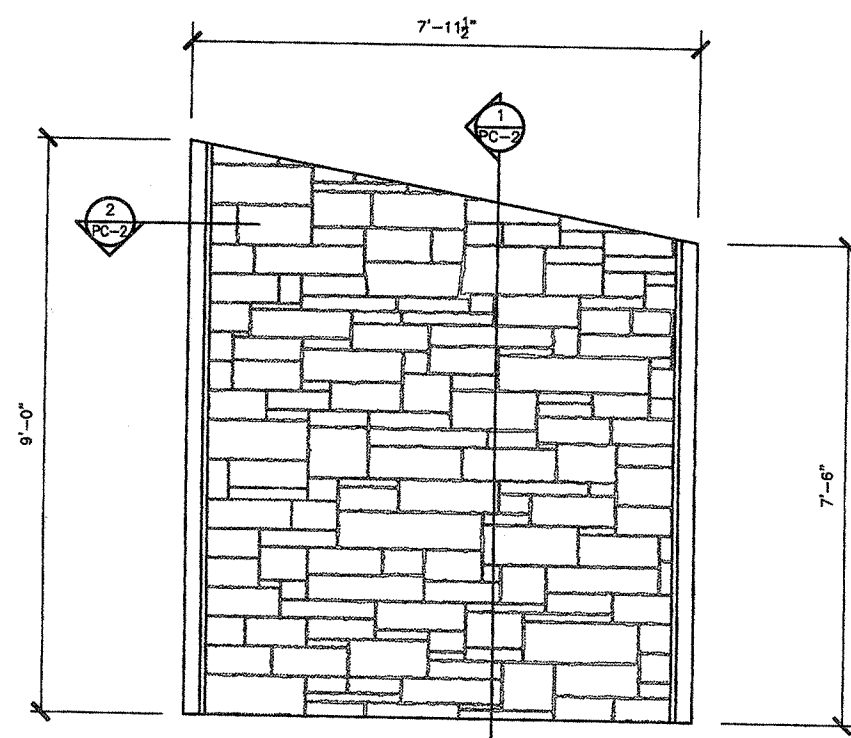
ELEVATION PC46 (1 pc)
 $\frac{1}{2}'' = 1'-0''$



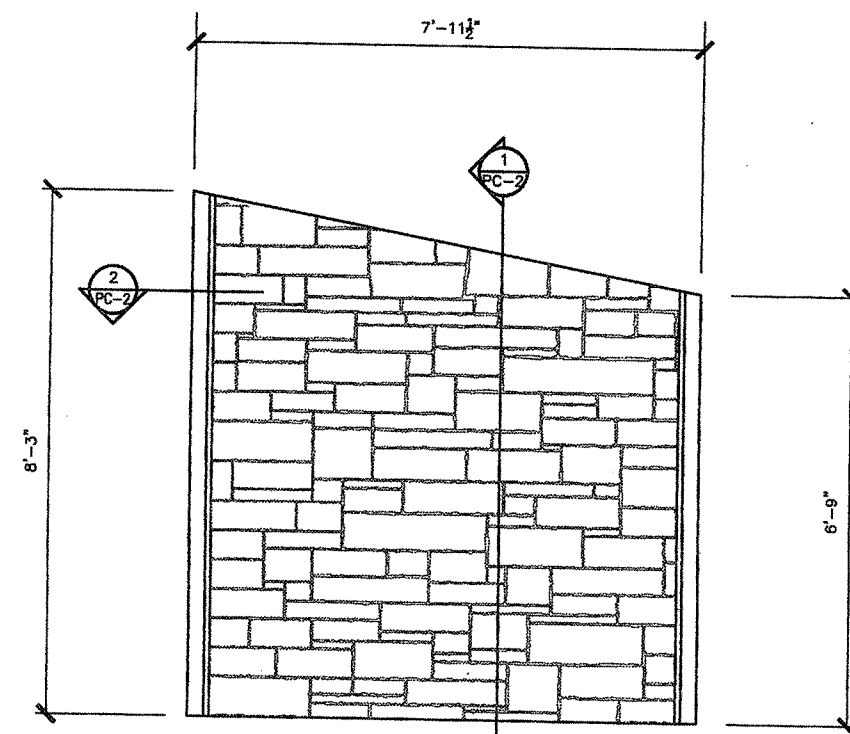
ELEVATION PC47 (1 pc)
 $\frac{1}{2}'' = 1'-0''$



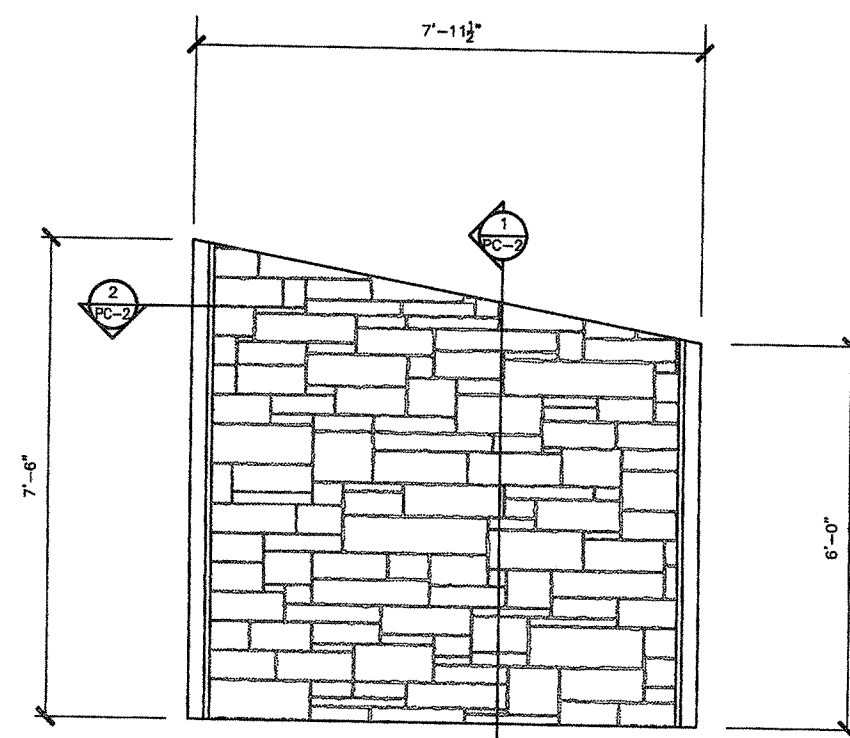
ELEVATION PC48 (1 pc)
 $\frac{1}{2}'' = 1'-0''$



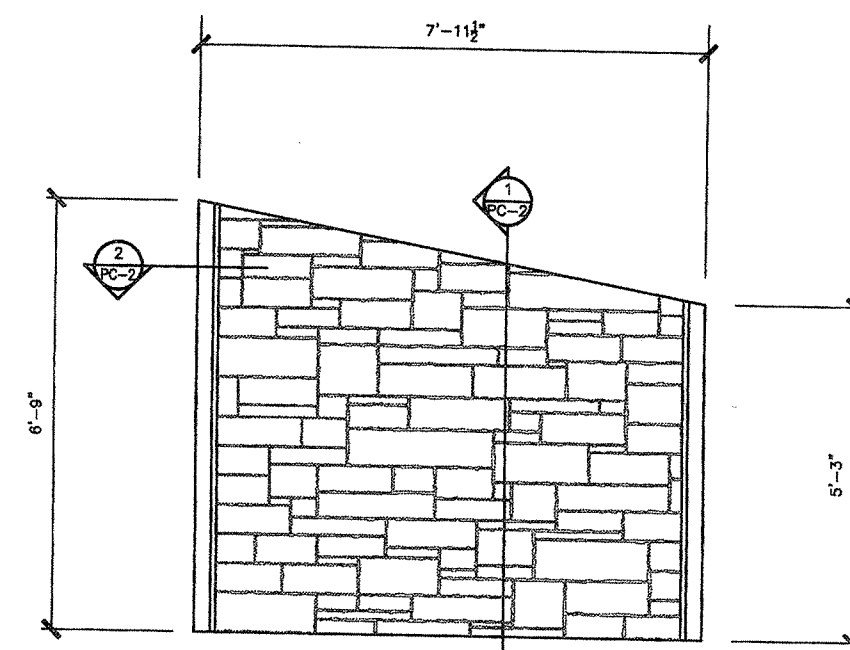
ELEVATION PC49 (1 pc)
 $\frac{1}{2}'' = 1'-0''$



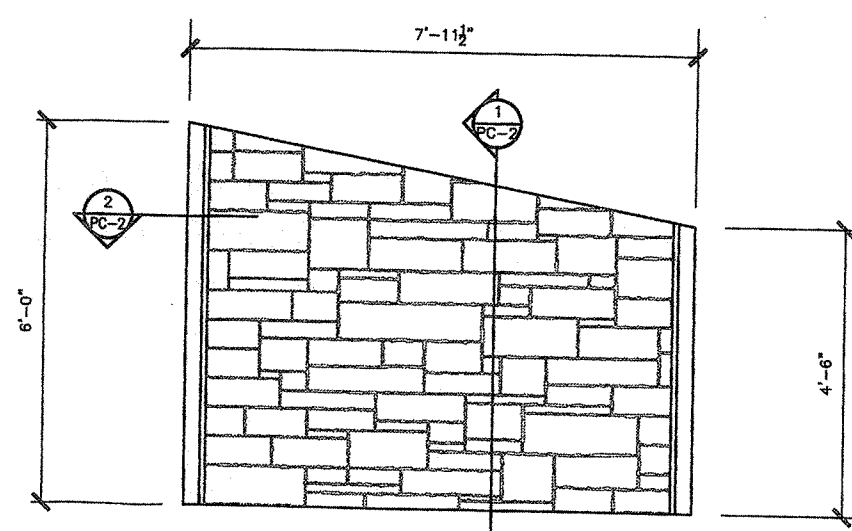
ELEVATION PC50 (1 pc)
 $\frac{1}{2}'' = 1'-0''$



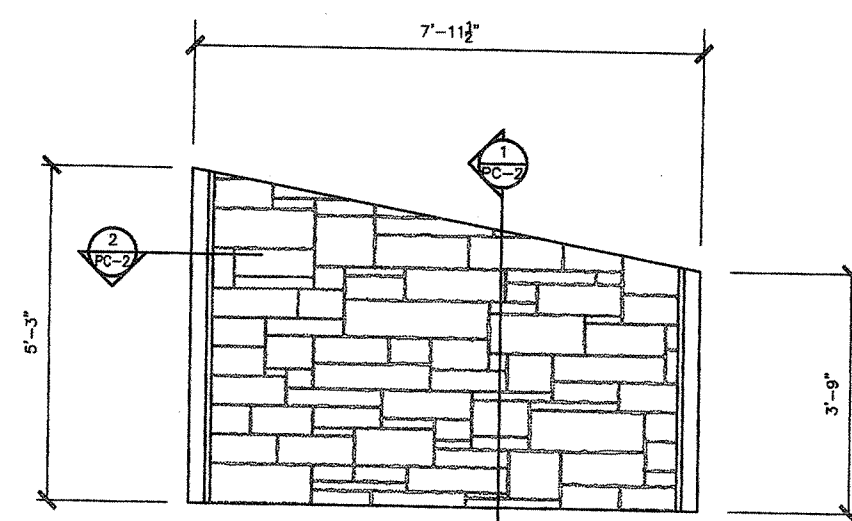
ELEVATION PC51 (1 pc)
 $\frac{1}{2}'' = 1'-0''$



ELEVATION PC52 (1 pc)
 $\frac{1}{2}'' = 1'-0''$



ELEVATION PC53 (1 pc)
 $\frac{1}{2}'' = 1'-0''$



ELEVATION PC54 (1 pc)
 $\frac{1}{2}'' = 1'-0''$

* contractor to verify dimensions

NOTE:
 SEE SHEET PC-5 FOR
 PANEL REINFORCING,
 DETAILS AND NOTES.



NOTE:
 This shop drawing represents the design of the contractor and is not to be used for any other project without the approval of the engineer of record.

GENERAL NOTES:
 1) All panels and panels shall be cast in place.
 2) All panels shall be cast in place.
 3) All panels shall be cast in place.
 4) All panels shall be cast in place.

Approval Stamp:
 I, the undersigned, have reviewed the drawings and approve them for construction.

Approved: _____
 Approved on behalf of: _____
 (Seal and Signature)
 Date: _____
 Company: _____

No.	DATE	REVISION

McFarland Johnson
 CIVIL ENGINEERS & ARCHITECTS
 40 PARKVIEW STREET

TOWN OF HART FORD
 COUNTY OF WINDSOR
 U.S. ROUTE 5 (MAJOR COLLECTOR)
 HARTFORD

DRAWN	APPROVED
CAB	
CHECKED	SCALE
RED	AS NOTED

PC