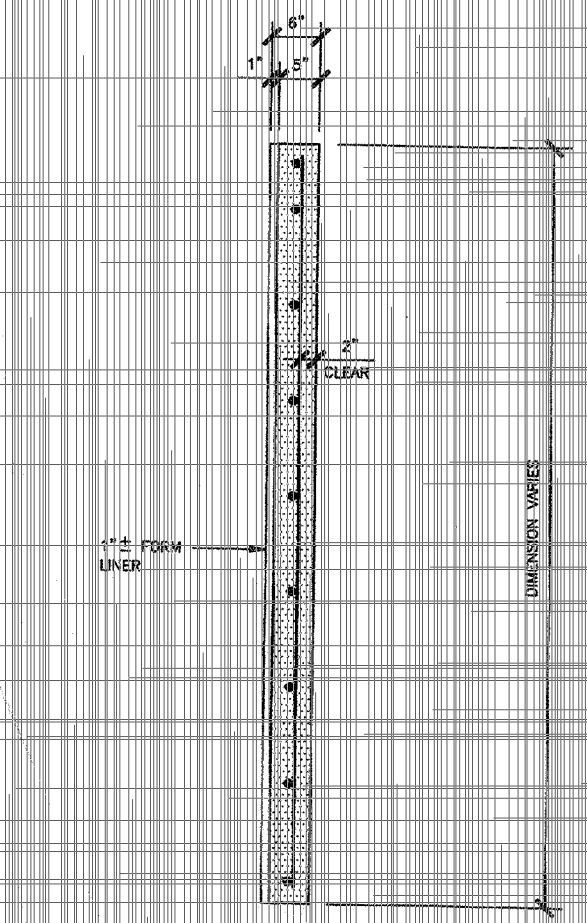


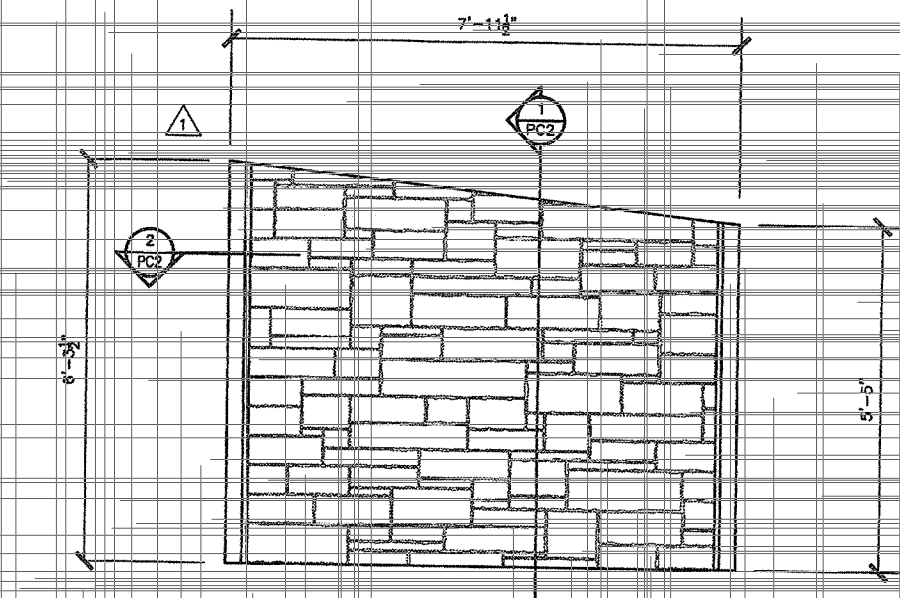
SECTION
1:1

- 1) ASSUME EQUAL FULL WIDTH SIDES OF PANEL. SEE REF. SECTION A-A SHEET 147 BY OTHERS.
- 2) FOOTING SIZE GIVEN ON SHEET 147. CONCRETE FOOTING SHALL BE CLASS 4000. FOOTING REINFORCING DESIGN BASED ON: MIN. FS = 1000 PSI; FC = 4000 PSI; Fy = 60,000 PSI.

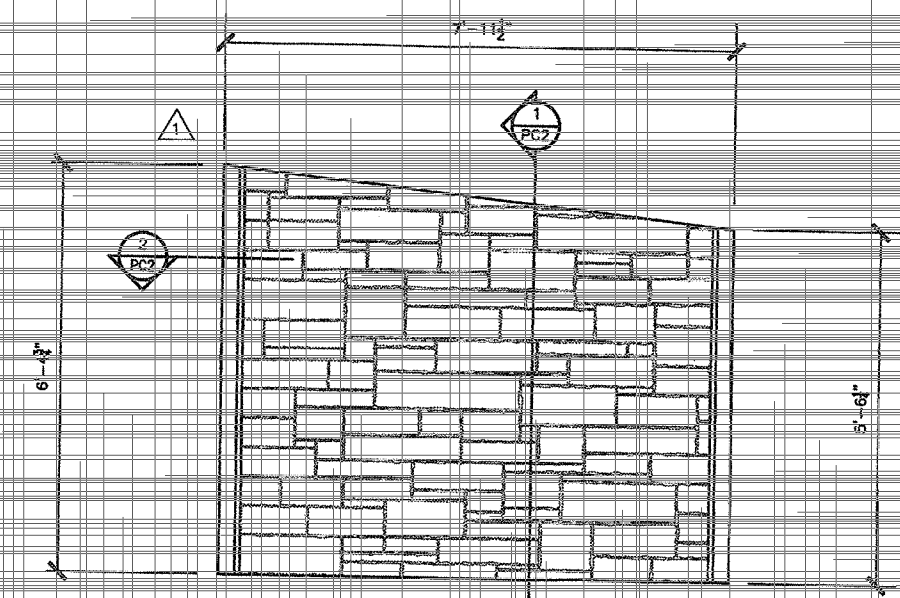
ALL PRECAST PANELS TYPICAL REINFORCING UNLESS NOTED OTHERWISE:
#4 @ 12" VERTICAL
#4 @ 12" HORIZONTAL



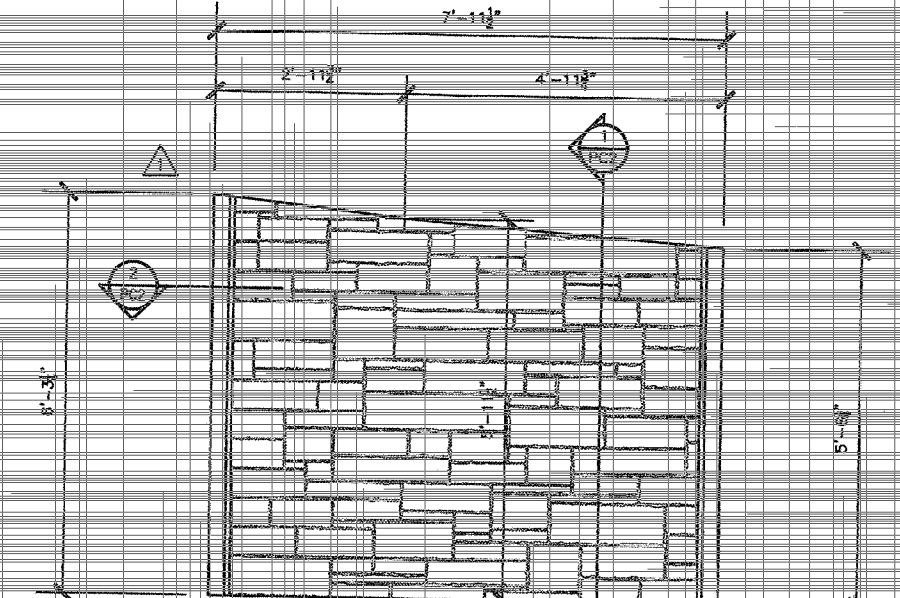
SECTION
1:1



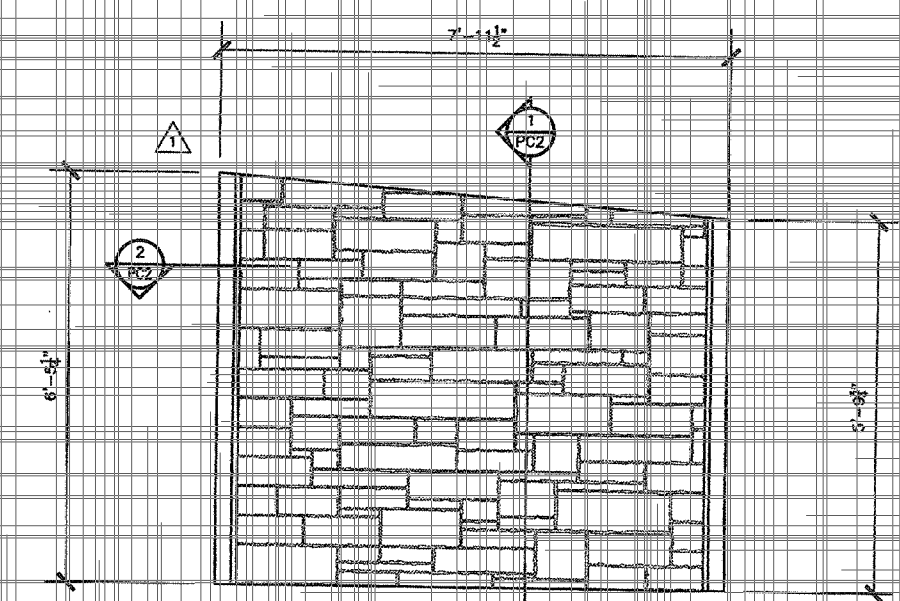
ELEVATION PC1 (9 pcs)
7'-1 1/2"
6'-0"



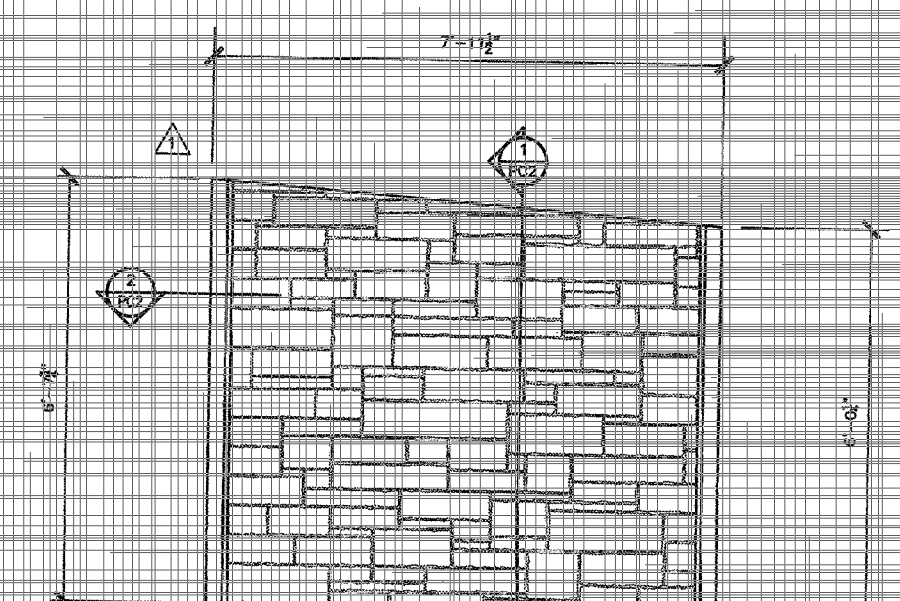
ELEVATION PC2 (10 pcs)
7'-1 1/2"
6'-0"



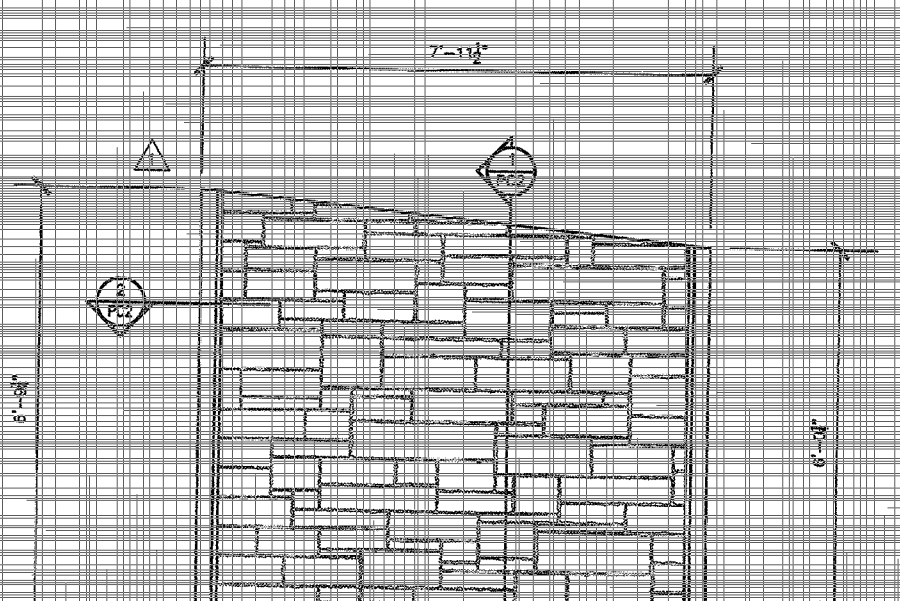
ELEVATION PC3 (1 pc)
7'-1 1/2"
6'-0"



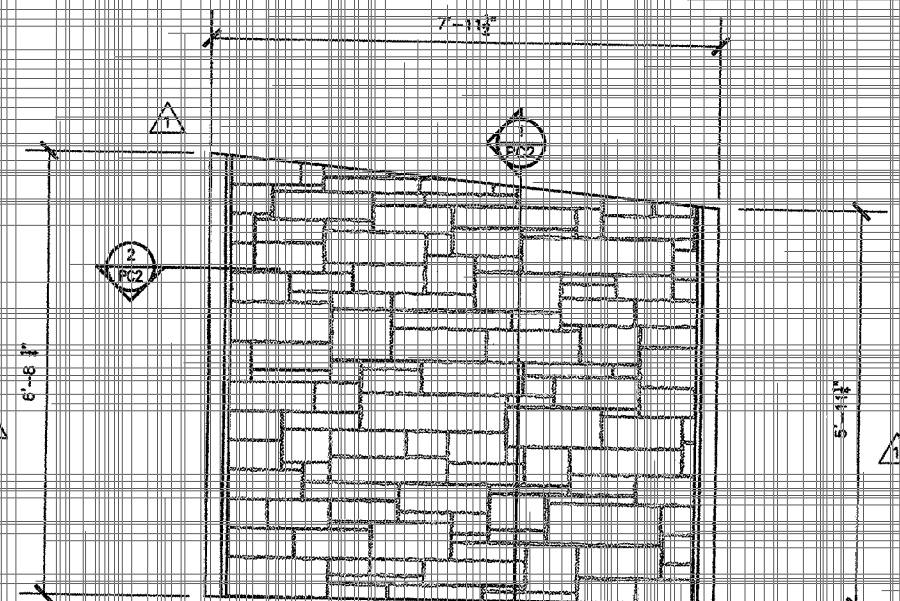
ELEVATION PC4 (1 pc)
7'-1 1/2"
6'-0"



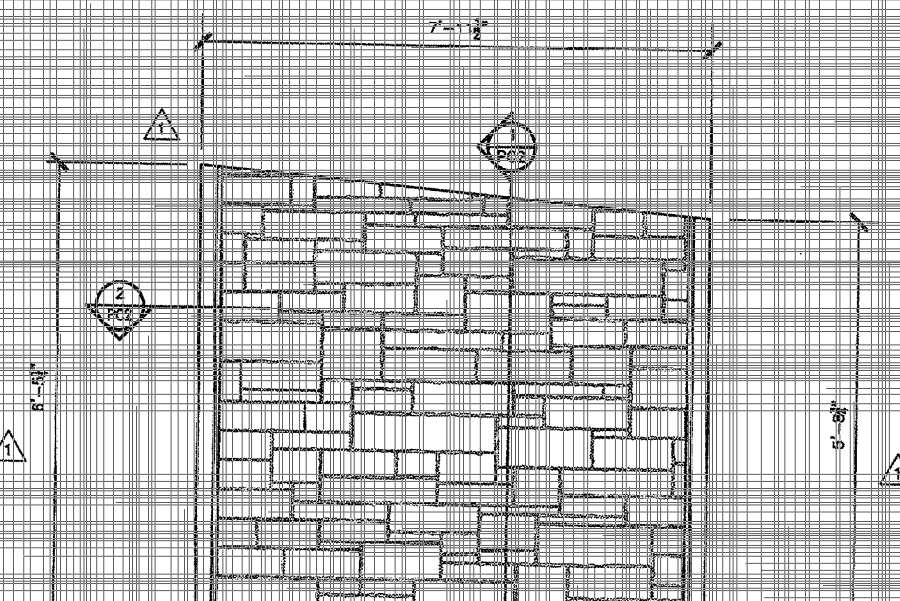
ELEVATION PC5 (1 pc)
7'-1 1/2"
6'-0"



ELEVATION PC6 (5 pcs)
7'-1 1/2"
6'-0"

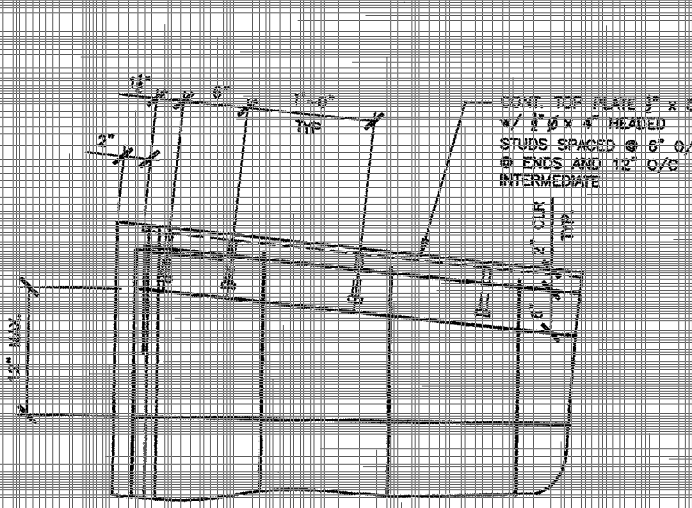


ELEVATION PC7 (2 pcs)
7'-1 1/2"
6'-0"



ELEVATION PC8 (3 pcs)
7'-1 1/2"
6'-0"

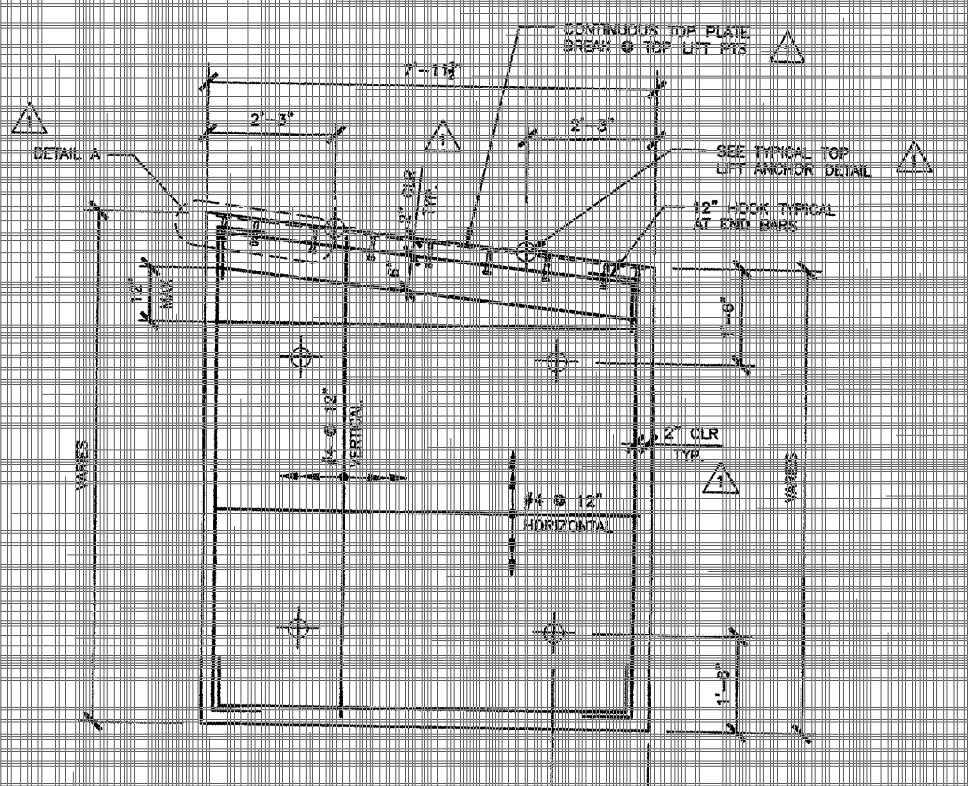
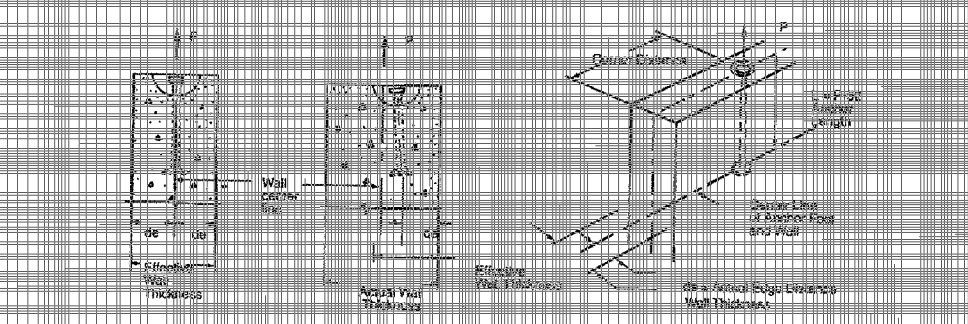
PIECE MARK PC9 - NOT USED



* Our review of sheet PC-1 was limited to verify that the details apply to the location and type.

Swift Lift System
DAYTON SUPERIOR

P-32 Swift Lift Anchor is used to lift precast concrete panels. It is designed to be used with the Dayton Superior P-32 Swift Lift Anchor. The anchor is made of high strength steel and is designed to be used with the Dayton Superior P-32 Swift Lift Anchor. The anchor is made of high strength steel and is designed to be used with the Dayton Superior P-32 Swift Lift Anchor.



TYPICAL PRECAST PLANK REINFORCING ELEVATION

GRISWOLD
S.T. Griswold & Co. Inc.
100 Main St.
Burlington, VT 05403
Tel: (802) 249-7400
Fax: (802) 249-7401
Architectural Precast Division

NPCA CERTIFIED PLANT

NOTE:
This shop drawing represents the contractor's interpretation of the architect's intent and is not a contract document. It is the contractor's responsibility to verify the accuracy of the information provided and to ensure that the construction is in accordance with the contract documents.

GENERAL NOTES:
1) All dimensions are given in feet and inches unless otherwise noted.
2) All dimensions are to be verified in the field by the contractor.
3) All dimensions are to be verified in the field by the contractor.

Approval Stamp:

DATE: 1/23/08
REVISION: 1/23/08

DATE	REVISION
1/23/08	REVISION PER APPROVAL NOTATIONS

Mclanland Johnson
40 PARSONS STREET
SOUTH BURLINGTON, VT 05403
TEL: (802) 862-5361
FAX: (802) 862-7450

TOWN OF HARTFORD
COUNTY OF WINDSOR
U.S. ROUTE 5 (MAJOR COLLECTOR)
HARTFORD, VT
PRECAST ELEVATIONS & SECTIONS

DATE	APPROVED	PROJECT NO.
1/23/08	[Signature]	17-188-000
DATE	SCALE	DATE
1/23/08	AS NOTED	1/23/08

PC-2