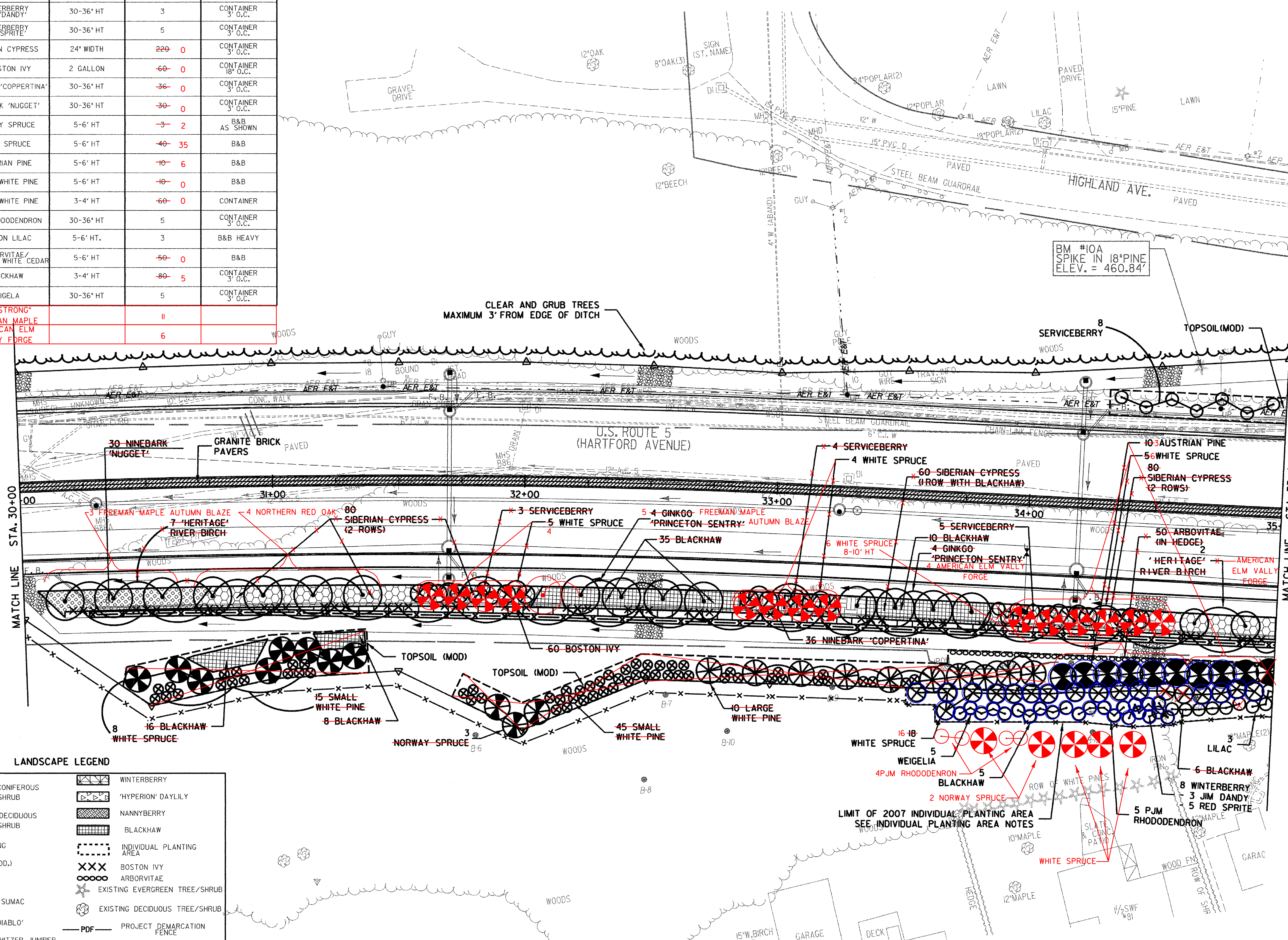


PILEA GRAULA	WHITE SPRUCE	8'-10" HT	6	B+B
RUERCUS	NORTHERN RED OAK		4	

BOTANICAL NAME	COMMON NAME	SIZE	QUANTITY	SPECIFICATIONS
AMELANCHIER GRANDIFLORA	SERVICEBERRY	1-1.5' CAL.	-20- 0	B&B MULTISTEM
BETULA NIGRA 'HERITAGE'	HERITAGE RIVERBIRCH	2.5-3' CAL.	-9- 0	B&B 2 STEM
GINKGO BILOBA 'PRINCETON SENTRY'	'PRINCETON SENTRY' GINKGO	2.5-3' CAL.	-8- 0	B&B
ILEX VERTICILLATA 'JIM DANDY'	WINTERBERRY 'JIM DANDY'	30-36" HT	3	CONTAINER 3' O.C.
ILEX VERTICILLATA 'REDSprite'	WINTERBERRY 'REDSprite'	30-36" HT	5	CONTAINER 3' O.C.
MICROBIOTA DECUSSATA	SIBERIAN CYPRESS	24" WIDTH	220- 0	CONTAINER 3' O.C.
PARTHENOCISSUS TRICUSPIDATA	BOSTON IVY	2 GALLON	-60- 0	CONTAINER 8" O.C.
PHYSOCARPUS OPULIFOLIUS 'COPPERTINA'	NINEBARK 'COPPERTINA'	30-36" HT	-36- 0	CONTAINER 3' O.C.
PHYSOCARPUS OPULIFOLIUS 'NUGGET'	NINEBARK 'NUGGET'	30-36" HT	-30- 0	CONTAINER 3' O.C.
PICEA ABIES	NORWAY SPRUCE	5-6' HT	-3- 2	B&B AS SHOWN
PICEA GLAUCA	WHITE SPRUCE	5-6' HT	-40- 35	B&B
PINUS NIGRA	AUSTRIAN PINE	5-6' HT	-10- 6	B&B
PINUS STROBUS LARGE	LARGE WHITE PINE	5-6' HT	-10- 0	B&B
PINUS STROBUS - SMALL	SMALL WHITE PINE	3-4' HT	-60- 0	CONTAINER
RHODODENDRON PJM	PJM RHODODENDRON	30-36" HT	5	CONTAINER 3' O.C.
SYRINGA VULGARIS	COMMON LILAC	5-6' HT.	3	B&B HEAVY
THUJA OCCIDENTALIS	ARBORVITAE/NORTHERN WHITE CEDAR	5-6' HT	-50- 0	B&B
VIBURNUM PRUNIFOLIUM	BLACKHAW	3-4' HT	-80- 5	CONTAINER 3' O.C.
WEIGELA FLORIDA	WEIGELA	30-36" HT	5	CONTAINER 3' O.C.

AUTUMN BLAZE	"ARMSTRONG" FREEMAN MAPLE		11	
ULMUS AMERICANA VALLY FORGE	AMERICAN ELM VALLY FORGE		6	

TOPSOIL (MOD.)
 30+05 ~ 35+00 RT (495' LENGTH x 7'0" WIDE x 2" DEEP @ TOE OF WALL)
 34+30 ~ 35+00 LT (70' LENGTH x 10' WIDE x 2" DEEP)
 30+40 RT ~ 31-37 RT (98' LENGTH x 17' WIDE x 2" DEEP @ TOP OF WALL)
 31+7 RT ~ 35+00 RT (332' LENGTH x VARIABLE WIDTH (NO TYPICAL) x 2" DEEP @ TOP OF WALL)



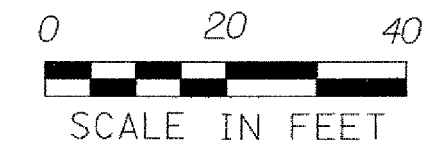
LANDSCAPE LEGEND

	PROPOSED CONIFEROUS TREE/SHRUB		WINTERBERRY
	PROPOSED DECIDUOUS TREE/SHRUB		'HYPERION' DAYLILY
	BRICK PAVING		NANNYBERRY
	TOPSOIL (MOD.)		BLACKHAW
	LILAC		INDIVIDUAL PLANTING AREA
	'GROW LOW' SUMAC		BOSTON IVY
	NINEBARK 'DIABLO'		ARBORVITAE
	COMPACT Pfitzer JUNIPER		EXISTING EVERGREEN TREE/SHRUB
			EXISTING DECIDUOUS TREE/SHRUB
			PROJECT DEMARCATION FENCE
			SNOW FENCE (MOD. - ARCH)

- INDIVIDUAL PLANTING AREA NOTES:**
- IN ACCORDANCE WITH PROPERTY OWNER AGREEMENTS, THE PLANTINGS WITHIN THE OUTLINED AREA DESIGNATED AS THE INDIVIDUAL PLANTING AREA SHALL BE COMPLETED AND INSTALLED IN ADVANCE OF THE CONSTRUCTION OF THE WALL TO PROVIDE A SCREEN FOR ABUTTING HOMEOWNERS.
 - SEE LANDSCAPE DETAIL SHEET 181 FOR THE 2007 INDIVIDUAL PLANTING AREA DETAIL AND PLANT LIST.

DATUM
 VERTICAL NGVD 1929
 HORIZONTAL N/A

NOTES: 1) REFER TO TYPICAL ROADWAY SECTION SHEETS FOR SEEDING FORMULAS AND LANDSCAPING DETAIL SHEETS FOR PLANTING DETAILS.



PROJECT: HARTFORD	PROJECT NO.: RS 0113(40)
DESIGN FILE NAME: z027bdr.dgn	PLOT DATE: 2/27/2007
IPARM FILE NAME:	SURVEY DATE: 1/87
SURVEYED BY: FANTONI	DRAWN BY: E. ATKINS
SQUAD LEADER: KEN UPMAL	SHEET: 184 OF 239