

DURABLE 4" WHITE LINE
 50+00 ~ 58+10 EDGE LINE SOLID (17' LT)
 50+00 ~ 51+77 EDGE LINE SOLID (17' RT)
 51+77 ~ 51+96 RT EDGE LINE SOLID (RADIUS)
 52+26 ~ 52+44 RT EDGE LINE SOLID (RADIUS)
 52+44 ~ 52+68 EDGE LINE SOLID (17' RT)

DURABLE 4" YELLOW LINE
 50+00 ~ 51+96 LANE LINES SOLID & DASHED (6' LT)
 52+36 ~ 54+68 LANE LINES SOLID & DASHED (6' LT)
 50+00 ~ 51+96 LANE LINES SOLID & DASHED (6' RT)
 52+36 ~ 54+68 LANE LINES SOLID & DASHED (6' RT)

DURABLE 24" STOP BAR
 35+36 ~ 35+38 LT - 11" (GODFREY ST)
 40+38 LT - 10" (DEVIN ST)

DURABLE LETTER OR SYMBOL
 50+00 ~ 55+00 ARROWS (4 EACH)
 35+42 ~ 35+50 LT STOP (4 EACH) (GODFREY ST)
 40+42 ~ 40+50 LT STOP (4 EACH) (DEVIN ST)

DURABLE CROSSWALK W/ DIAGONAL LINES (MOD. - BLOCK TYPE)
 35+32 LT ~ 35+29 RT - 29 LF (GODFREY ST)
 40+30 LT ~ RT - 26 LF (DEVIN ST)

TEMPORARY 4" WHITE LINE
 (SAME AS DURABLE)

TEMPORARY 4" YELLOW LINE
 (SAME AS DURABLE)

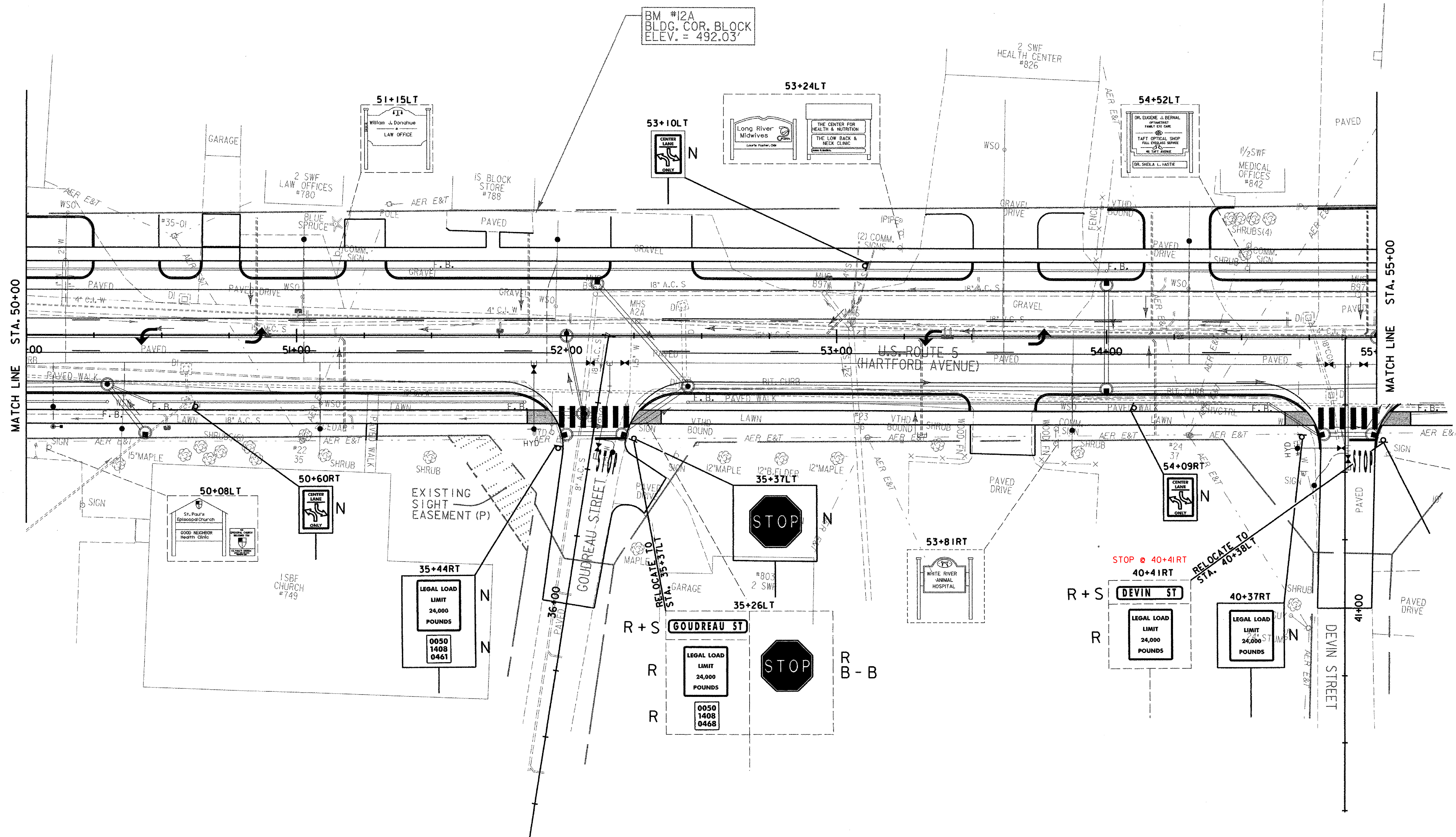
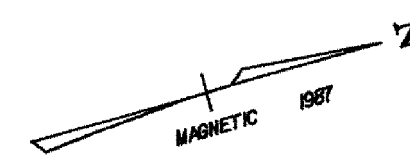
TEMPORARY 24" STOP BAR
 (SAME AS DURABLE)

TEMPORARY LETTERS OR SYMBOLS
 (SAME AS DURABLE)

TEMPORARY CROSSWALK W/ DIAGONAL LINES (MOD. - BLOCK TYPE)
 (SAME AS DURABLE)

REMOVING SIGNS
 4 EACH

ERECTING SALVAGED SIGNS
 2 EACH



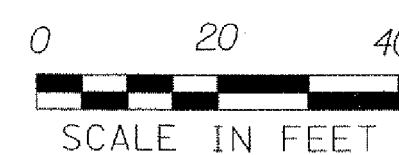
MATCH LINE STA. 50+00

MATCH LINE STA. 55+00

SIGN LEGEND

- = EXISTING SIGN
- = NEW SIGN
- R = REMOVE EXISTING SIGN AND POST
- R+S = SALVAGE SIGN AND RELOCATE TO NOTED LOCATION WITH NEW SIGN POST, REMOVE AND DISPOSE EXISTING SIGN POST
- N = NEW
- RET = RETAIN AT EXISTING LOCATION
- B-B = BACK TO BACK

DATUM
 VERTICAL NGVD 1929
 HORIZONTAL N/A



NOTE: ALL NEW SIGNS SHALL USE TYPE III HIGH INTENSITY REFLECTIVE SHEETING

PVMT MARKINGS AND SIGNS LAYOUT SHEET 7

PROJECT: HARTFORD	PROJECT NO.: RS 0113(40)
DESIGN FILE NAME: z027bdr.dgn	PLOT DATE: 1/10/2007
IPARM FILE NAME:	SURVEY DATE: 1/87
SURVEYED BY: FANTONI	DRAWN BY: E. ATKINS
SQUAD LEADER: KEN UPMAL	SHEET: 163 OF 239