

STONE FILL, TYPE I (MOD. - CONSTRUCTION ENTRANCE)

20+03 RT (STABILIZED CONSTRUCTION ENTRANCE)

STONE FILL, TYPE I (MOD. - INLET PROTECTION)

PROP. CB @ 19+80.0 RT

SNOW FENCE (MOD. - PDF)

19+03 ~ 20+53 RT

23+75 ~ 24+50 RT

GEOTEXTILE FABRIC FOR FILTERS

EXIST. DI @ 20+73.2 RT (9 S.F. INLET PROTECTION)
EXIST. DI @ 21+62.8 LT (9 S.F. INLET PROTECTION)
PROP. CB @ 21+63.1 LT (9 S.F. INLET PROTECTION)
PROP. CB @ 21+76.8 RT (9 S.F. INLET PROTECTION)
EXIST. DI @ 21+77.4 RT (9 S.F. INLET PROTECTION)
EXIST. DI @ 22+45.8 LT (9 S.F. INLET PROTECTION)
EXIST. DI @ 22+46.0 RT (9 S.F. INLET PROTECTION)
PROP. CB @ 22+46.1 LT (9 S.F. INLET PROTECTION)
PROP. CB @ 22+46.1 RT (9 S.F. INLET PROTECTION)
EXIST. DI @ 22+46.6 LT (9 S.F. INLET PROTECTION)
EXIST. DI @ 22+52.5 RT (9 S.F. INLET PROTECTION)
EXIST. DI @ 22+82.3 RT (9 S.F. INLET PROTECTION)
EXIST. DI @ 23+28.7 LT (9 S.F. INLET PROTECTION)
EXIST. DI @ 23+28.9 RT (9 S.F. INLET PROTECTION)
PROP. CB @ 24+20.0 LT (9 S.F. INLET PROTECTION)
PROP. CB @ 24+20.0 RT (9 S.F. INLET PROTECTION)

GEOTEXTILE FOR SILT FENCE

19+08 ~ 19+36 RT

21+50 ~ 25+00 LT

GEOTEXTILE FOR FILTER CURTAIN

19+18 ~ 19+30 RT

SEED

19+25 ~ 20+43 RT

21+45 ~ 25+00 RT

21+45 ~ 25+00 LT

SEED ~ WINTER RYE

19+25 ~ 20+43 RT

21+45 ~ 25+00 RT

21+45 ~ 25+00 LT

HAY MULCH

19+25 ~ 20+43 RT

21+45 ~ 25+00 RT

21+45 ~ 25+00 LT

EROSION MATTING

24+00 ~ 25+00 RT

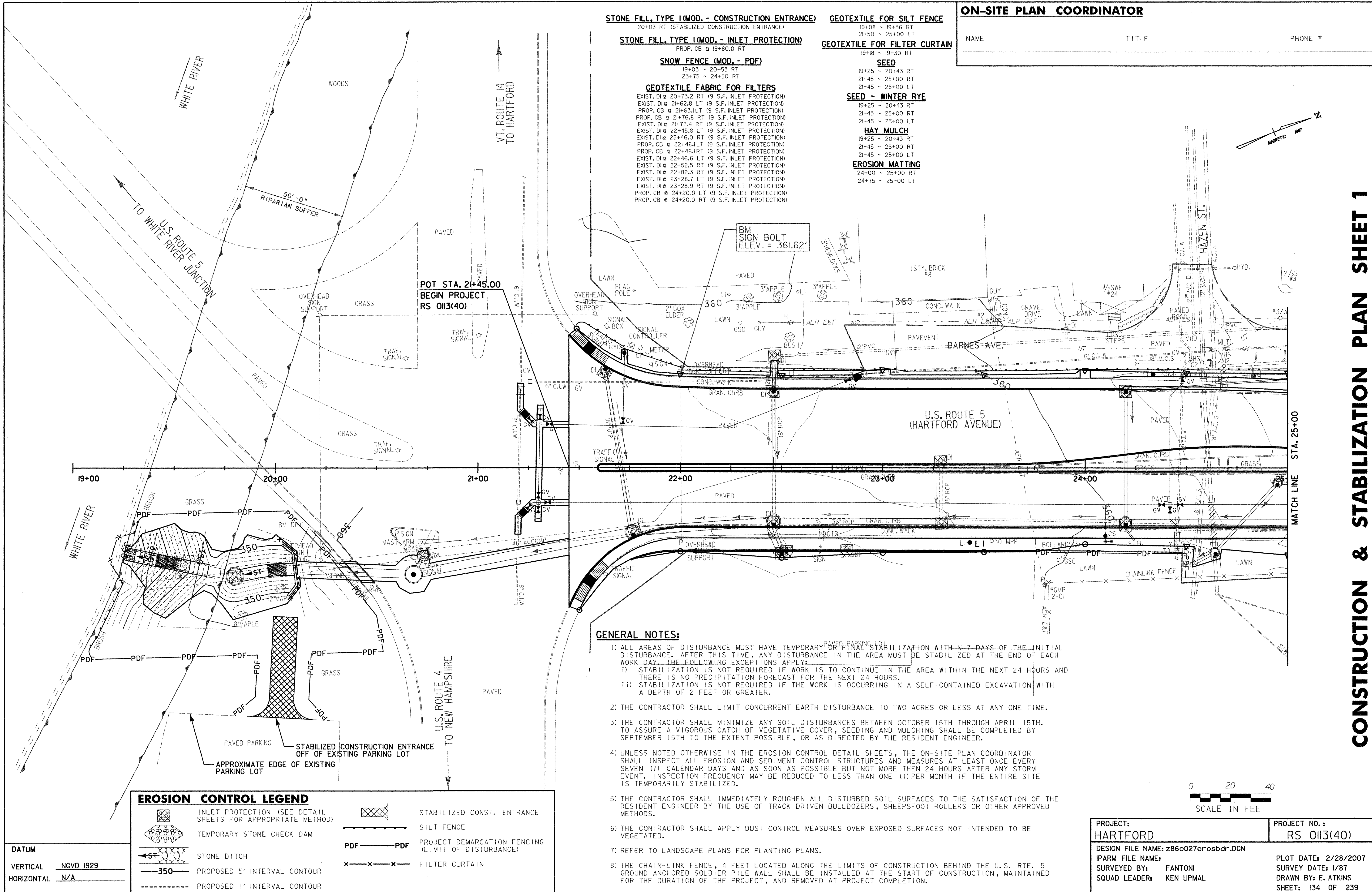
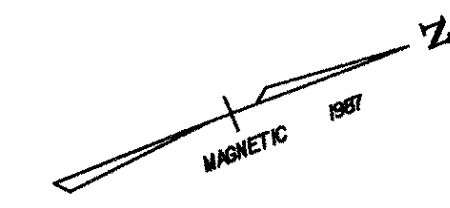
24+75 ~ 25+00 LT

ON-SITE PLAN COORDINATOR

NAME

TITLE

PHONE #



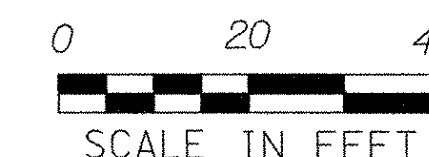
GENERAL NOTES:

- 1) ALL AREAS OF DISTURBANCE MUST HAVE TEMPORARY OR FINAL STABILIZATION WITHIN 7-DAYS OF THE INITIAL DISTURBANCE. AFTER THIS TIME, ANY DISTURBANCE IN THE AREA MUST BE STABILIZED AT THE END OF EACH WORK DAY. THE FOLLOWING EXCEPTIONS APPLY:
i) STABILIZATION IS NOT REQUIRED IF WORK IS TO CONTINUE IN THE AREA WITHIN THE NEXT 24 HOURS AND THERE IS NO PRECIPITATION FORECAST FOR THE NEXT 24 HOURS.
ii) STABILIZATION IS NOT REQUIRED IF THE WORK IS OCCURRING IN A SELF-CONTAINED EXCAVATION WITH A DEPTH OF 2 FEET OR GREATER.
2) THE CONTRACTOR SHALL LIMIT CONCURRENT EARTH DISTURBANCE TO TWO ACRES OR LESS AT ANY ONE TIME.
3) THE CONTRACTOR SHALL MINIMIZE ANY SOIL DISTURBANCES BETWEEN OCTOBER 15TH THROUGH APRIL 15TH. TO ASSURE A VIGOROUS CATCH OF VEGETATIVE COVER, SEEDING AND MULCHING SHALL BE COMPLETED BY SEPTEMBER 15TH TO THE EXTENT POSSIBLE, OR AS DIRECTED BY THE RESIDENT ENGINEER.
4) UNLESS NOTED OTHERWISE IN THE EROSION CONTROL DETAIL SHEETS, THE ON-SITE PLAN COORDINATOR SHALL INSPECT ALL EROSION AND SEDIMENT CONTROL STRUCTURES AND MEASURES AT LEAST ONCE EVERY SEVEN (7) CALENDAR DAYS AND AS SOON AS POSSIBLE BUT NOT MORE THEN 24 HOURS AFTER ANY STORM EVENT. INSPECTION FREQUENCY MAY BE REDUCED TO LESS THAN ONE (1) PER MONTH IF THE ENTIRE SITE IS TEMPORARILY STABILIZED.
5) THE CONTRACTOR SHALL IMMEDIATELY ROUGHEN ALL DISTURBED SOIL SURFACES TO THE SATISFACTION OF THE RESIDENT ENGINEER BY THE USE OF TRACK DRIVEN BULLDOZERS, SHEEPSFOOT ROLLERS OR OTHER APPROVED METHODS.
6) THE CONTRACTOR SHALL APPLY DUST CONTROL MEASURES OVER EXPOSED SURFACES NOT INTENDED TO BE VEGETATED.
7) REFER TO LANDSCAPE PLANS FOR PLANTING PLANS.
8) THE CHAIN-LINK FENCE, 4 FEET LOCATED ALONG THE LIMITS OF CONSTRUCTION BEHIND THE U.S. RTE. 5 GROUND ANCHORED SOLDIER PILE WALL SHALL BE INSTALLED AT THE START OF CONSTRUCTION, MAINTAINED FOR THE DURATION OF THE PROJECT, AND REMOVED AT PROJECT COMPLETION.

EROSION CONTROL LEGEND

Table with 2 columns: Symbol and Description. Symbols include stone check dam, silt fence, project demarcation fence, stone ditch, contours, stabilized const. entrance, and filter curtain.

DATUM
VERTICAL NGVD 1929
HORIZONTAL N/A



Project information table including Project Name (HARTFORD), Design File Name, IPARM File Name, Surveyed By (FANTONI), Squad Leader (KEN UPMAL), Project No. (RS 0113(40)), Plot Date (2/28/2007), Survey Date (1/87), Drawn By (E. ATKINS), and Sheet (134 OF 239).

CONSTRUCTION & STABILIZATION PLAN SHEET 1