

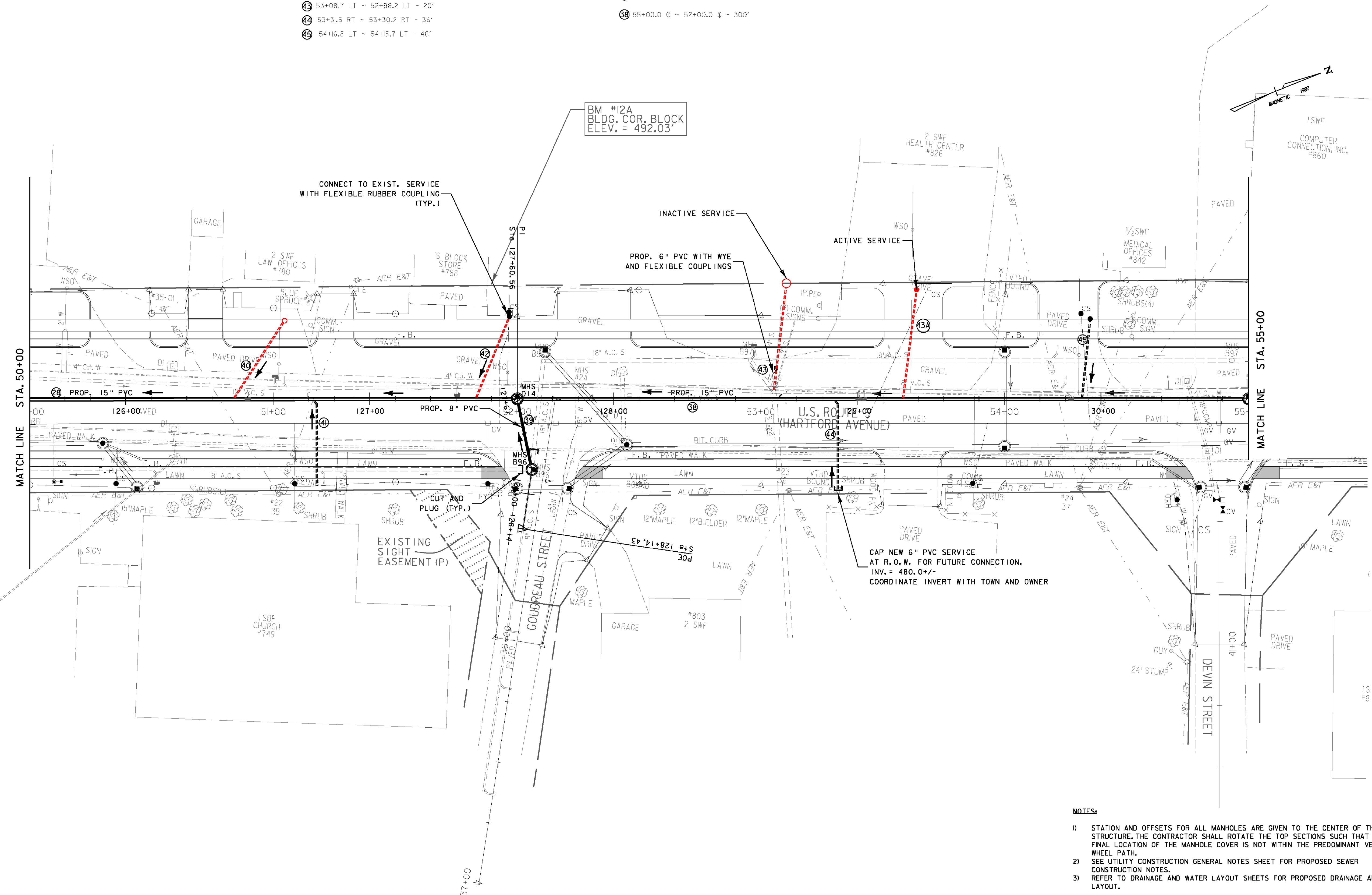
**SANITARY SEWER MANHOLE**  
 MHS D14 - 52+00.0 @  
 MHS D15 - 55+00.0 @  
 \*MHS B96 - 35+29.9, 5.0' RT (GOLDREAU ST)  
 (CHANGED TO MODIFIED CLASS III)

**PVC SEWER PIPE (6")**  
 ④ 50+85.3 LT ~ 50+84.4 LT - 44'  
 ④ 51+7.7 RT ~ 51+6.4 RT - 36'  
 ④ 53+08.7 LT ~ 52+96.2 LT - 20'  
 ④ 53+31.5 RT ~ 53+30.2 RT - 36'  
 ④ 54+16.8 LT ~ 54+15.7 LT - 46'

**PVC SEWER PIPE (8")**  
 ⑤ 35+29.9 RT (GOLDREAU ST) ~ 52+00.0 @ (HARTFORD AVE) - 30'

**PVC SEWER PIPE (15")**  
 ② 52+00.0 @ ~ 49+10.0 RT - 290'

⑥ 55+00.0 @ ~ 52+00.0 @ - 300'



**SANITARY SEWER LAYOUT SHEET 7**

- NOTES:**
- STATION AND OFFSETS FOR ALL MANHOLES ARE GIVEN TO THE CENTER OF THE STRUCTURE. THE CONTRACTOR SHALL ROTATE THE TOP SECTIONS SUCH THAT THE FINAL LOCATION OF THE MANHOLE COVER IS NOT WITHIN THE PREDOMINANT VEHICLE WHEEL PATH.
  - SEE UTILITY CONSTRUCTION GENERAL NOTES SHEET FOR PROPOSED SEWER CONSTRUCTION NOTES.
  - REFER TO DRAINAGE AND WATER LAYOUT SHEETS FOR PROPOSED DRAINAGE AND WATER LAYOUT.

PROJECT: <b>HARTFORD</b>	PROJECT NO.: <b>RS 0113(40)</b>
DESIGN FILE NAME: z86c027sewldr.DGN	PLOT DATE: 4/11/2012
IPARM FILE NAME:	SURVEY DATE: 1/87
SURVEYED BY: FANTONI	DRAWN BY: E. ATKINS
SQUAD LEADER: KEN UPMAL	SHEET: 107 OF 239

<b>DATUM</b>	
VERTICAL	NGVD 1929
HORIZONTAL	N/A

