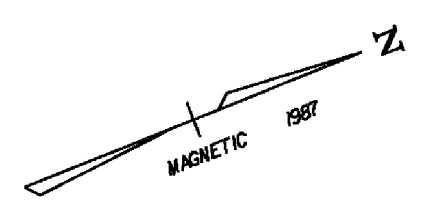
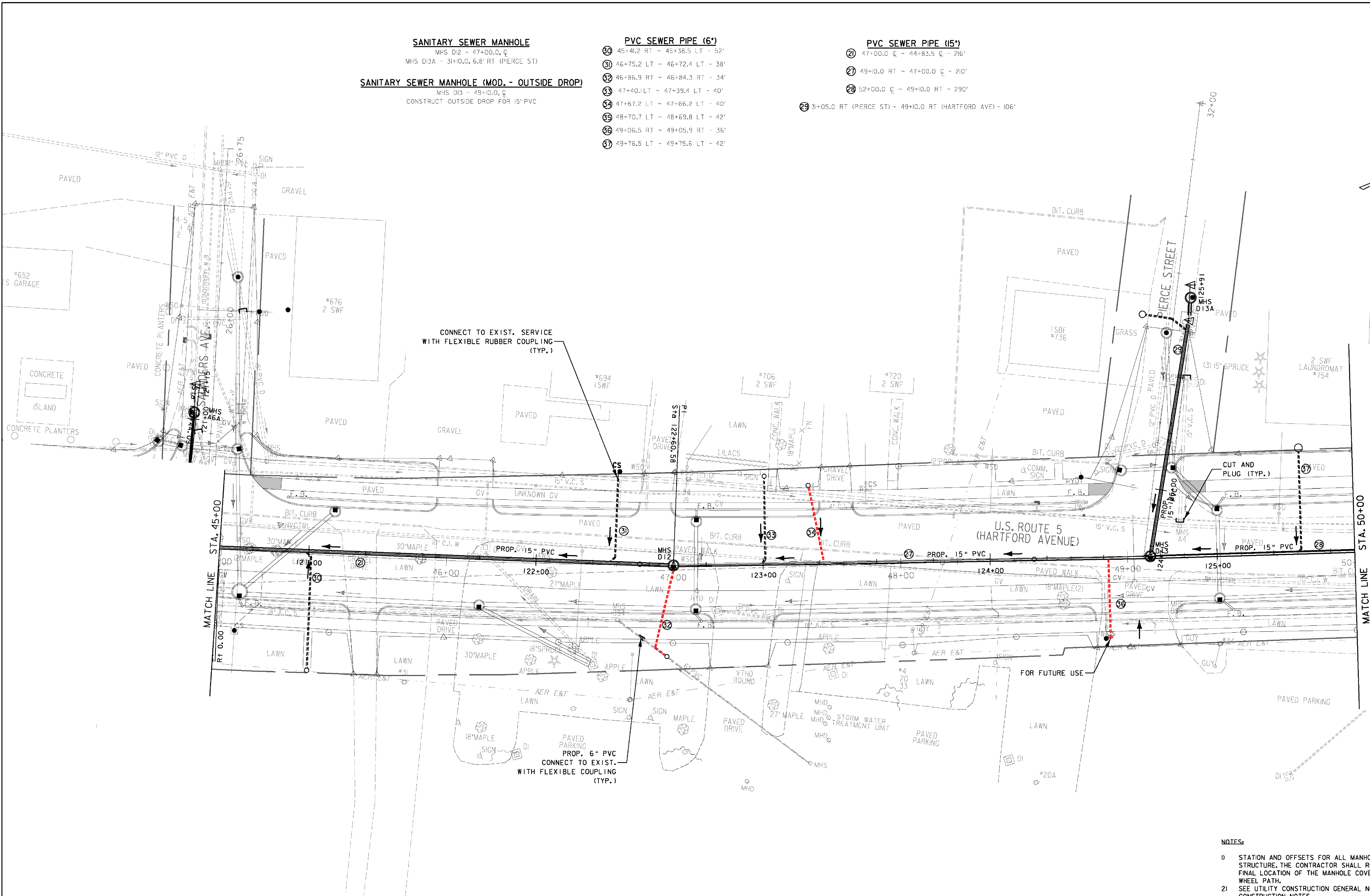


**SANITARY SEWER MANHOLE**  
 MHS D12 - 47+00.0,  $\phi$   
 MHS D13A - 31+00.0, 6.8' RT (PIERCE ST)

**SANITARY SEWER MANHOLE (MOD. - OUTSIDE DROP)**  
 MHS D13 - 49+00.0,  $\phi$   
 CONSTRUCT OUTSIDE DROP FOR 15" PVC

- PVC SEWER PIPE (6")**
- ① 45+41.2 RT ~ 45+38.5 LT - 52'
  - ② 46+75.2 LT ~ 46+72.4 LT - 38'
  - ③ 46+86.9 RT ~ 46+84.3 RT - 34'
  - ④ 47+40.1 LT ~ 47+39.4 LT - 40'
  - ⑤ 47+67.2 LT ~ 47+66.2 LT - 40'
  - ⑥ 48+70.7 LT ~ 48+69.8 LT - 42'
  - ⑦ 49+06.5 RT ~ 49+05.9 RT - 36'
  - ⑧ 49+76.5 LT ~ 49+75.6 LT - 42'

- PVC SEWER PIPE (15")**
- ⑨ 47+00.0  $\phi$  ~ 44+83.5  $\phi$  - 216'
  - ⑩ 49+00.0 RT ~ 47+00.0  $\phi$  - 210'
  - ⑪ 52+00.0  $\phi$  ~ 49+00.0 RT - 290'
  - ⑫ 31+05.0 RT (PIERCE ST) ~ 49+10.0 RT (HARTFORD AVE) - 106'



**SANITARY SEWER LAYOUT SHEET 6**

<b>DATUM</b>	
VERTICAL	NGVD 1929
HORIZONTAL	N/A



- NOTES:**
- 1) STATION AND OFFSETS FOR ALL MANHOLES ARE GIVEN TO THE CENTER OF THE STRUCTURE. THE CONTRACTOR SHALL ROTATE THE TOP SECTIONS SUCH THAT THE FINAL LOCATION OF THE MANHOLE COVER IS NOT WITHIN THE PREDOMINANT VEHICLE WHEEL PATH.
  - 2) SEE UTILITY CONSTRUCTION GENERAL NOTES SHEET FOR PROPOSED SEWER CONSTRUCTION NOTES.
  - 3) REFER TO DRAINAGE AND WATER LAYOUT SHEETS FOR PROPOSED DRAINAGE AND WATER LAYOUT.

PROJECT: <b>HARTFORD</b>	PROJECT NO. : RS 0113(40)
DESIGN FILE NAME: z86c027sewldr.DGN	PLOT DATE: 4/11/2012
IPARM FILE NAME:	SURVEY DATE: 1/87
SURVEYED BY: FANTONI	DRAWN BY: E. ATKINS
SQUAD LEADER: KEN UPMAL	SHEET: 106 OF 239