

SANITARY SEWER MANHOLE

MHS D10 - 41+92.5, 1.8' RT
 • MHS B91 - 41+96.1, 2.9' RT
 MHS A6A - 25+58.9, 7.9' LT (SAUNDERS AVE)
 • B91 CHANGED TO REHAB, CLASS III

SANITARY SEWER MANHOLE (MOD. - OUTSIDE DROP)

MHS D11 - 44+83.5, C
 CONSTRUCT OUTSIDE DROP FOR 8" PVC

REHAB OF SEWER MANHOLE, CLASS III

MHS B91 - 41+96.1 - 2.91 RJ

PVC SEWER PIPE (6")

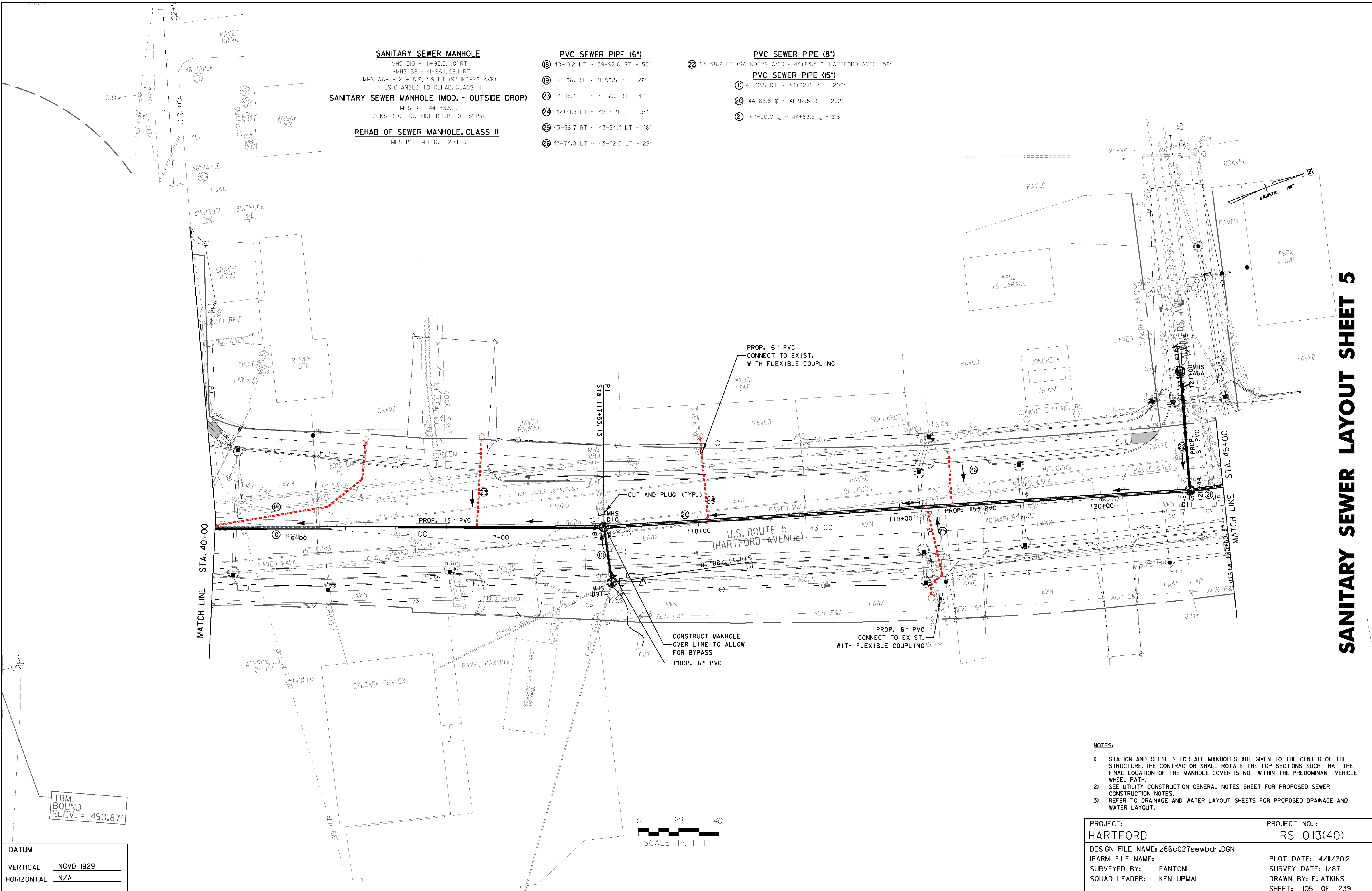
- ⑧ 40+10.2 LT ~ 39+92.0 RT - 52'
- ⑨ 41+96.1 RT ~ 41+92.5 RT - 28'
- ⑲ 41+18.4 LT ~ 41+17.0 RT - 42'
- ⑳ 42+41.9 LT ~ 42+41.9 LT - 34'
- ㉑ 43+56.7 RT ~ 43+54.4 LT - 46'
- ㉒ 43+74.0 LT ~ 43+72.0 LT - 28'

PVC SEWER PIPE (8")

- ㉓ 25+58.9 LT (SAUNDERS AVE) ~ 44+83.5 C (HARTFORD AVE) - 58'

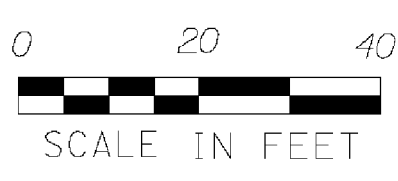
PVC SEWER PIPE (15")

- ⑩ 41+92.5 RT ~ 39+92.0 RT - 200'
- ㉔ 44+83.5 C ~ 41+92.5 RT - 292'
- ㉕ 47+00.0 C ~ 44+83.5 C - 216'



TBM BOUND ELEV. = 490.87'

DATUM
 VERTICAL NGVD 1929
 HORIZONTAL N/A



- NOTES:**
- 1) STATION AND OFFSETS FOR ALL MANHOLES ARE GIVEN TO THE CENTER OF THE STRUCTURE. THE CONTRACTOR SHALL ROTATE THE TOP SECTIONS SUCH THAT THE FINAL LOCATION OF THE MANHOLE COVER IS NOT WITHIN THE PREDOMINANT VEHICLE WHEEL PATH.
 - 2) SEE UTILITY CONSTRUCTION GENERAL NOTES SHEET FOR PROPOSED SEWER CONSTRUCTION NOTES.
 - 3) REFER TO DRAINAGE AND WATER LAYOUT SHEETS FOR PROPOSED DRAINAGE AND WATER LAYOUT.

PROJECT: HARTFORD	PROJECT NO.: RS 0113(40)
DESIGN FILE NAME: z86c027sewldr.DGN IPARM FILE NAME: SURVEYED BY: FANTONI SQUAD LEADER: KEN UPMAL	PLOT DATE: 4/11/2012 SURVEY DATE: 1/87 DRAWN BY: E. ATKINS SHEET: 105 OF 239