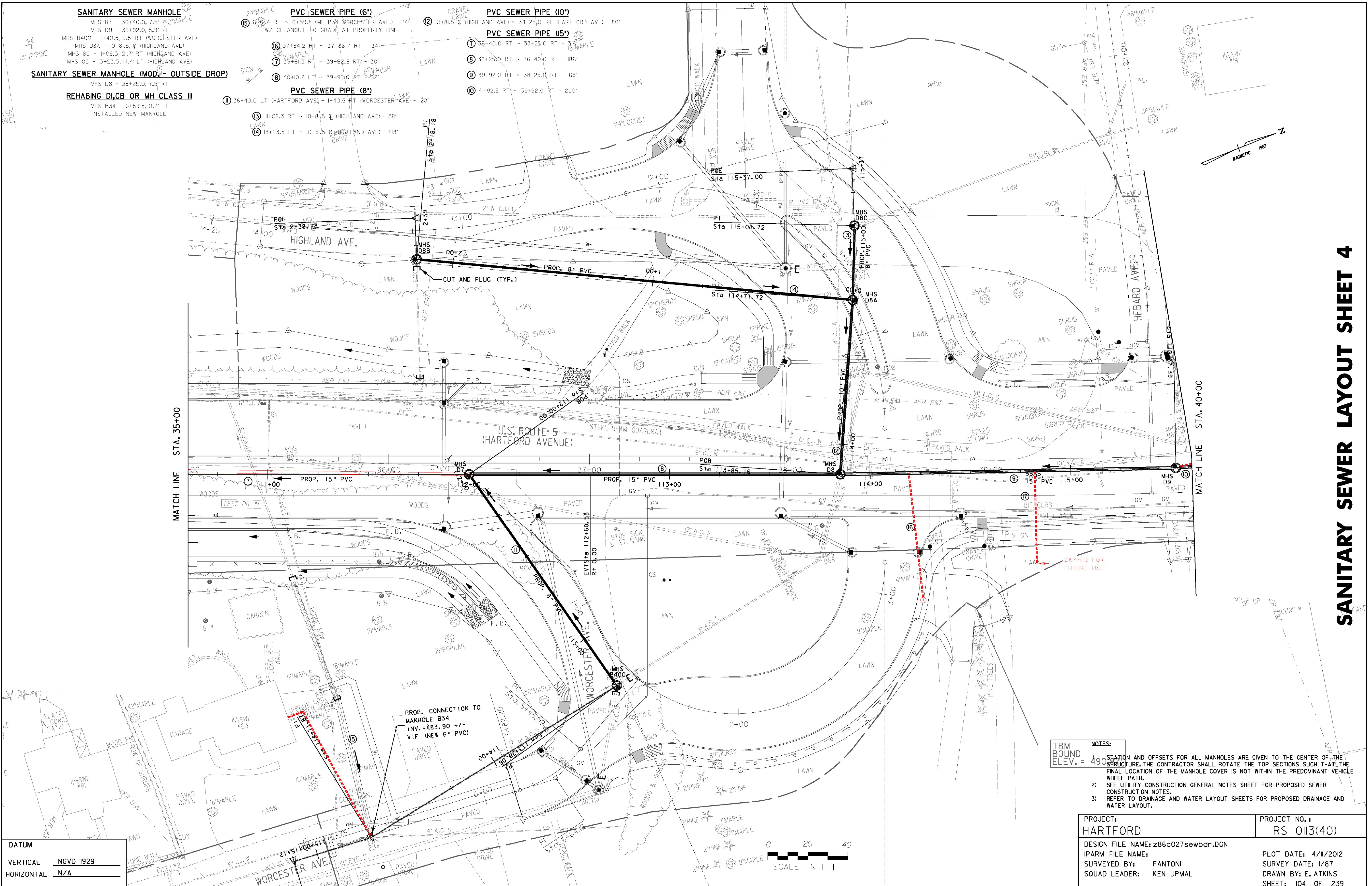


SANITARY SEWER LAYOUT SHEET 4



SANITARY SEWER MANHOLE
 MHS D7 - 36+40.0, 7.5' RT (30' MAPLE)
 MHS D9 - 39+92.0, 5.9' RT
 MHS B400 - 1+40.5, 9.5' RT (WORCESTER AVE)
 MHS D8A - 10+81.5, 0' (HIGHLAND AVE)
 MHS 8C - 11+09.3, 21.7' RT (HIGHLAND AVE)
 MHS 8B - 13+23.5, 14.4' LT (HIGHLAND AVE)

SANITARY SEWER MANHOLE (MOD - OUTSIDE DROP)
 MHS D8 - 38+25.0, 7.5' RT

REHABING DI, CB OR MH CLASS III
 MHS B34 - 6+59.5, 0.7' LT
 INSTALLED NEW MANHOLE

PVC SEWER PIPE (6")
 ⑤ 6+59.5 RT - 6+59.5 (MHS B34 WORCESTER AVE) - 74' W/ CLEANOUT TO GRADE AT PROPERTY LINE
 ⑥ 37+84.2 RT - 37+86.7 RT - 34'
 ⑦ 39+61.3 RT - 39+62.9 RT - 38'
 ⑧ 40+10.2 LT - 39+92.0 RT - 52'

PVC SEWER PIPE (8")
 ⑨ 36+40.0 LT (HARTFORD AVE) - 1+40.5 RT (WORCESTER AVE) - 128'
 ⑩ 11+09.3 RT - 10+81.5 (HIGHLAND AVE) - 38'
 ⑪ 13+23.5 LT - 10+81.5 (HIGHLAND AVE) - 218'

PVC SEWER PIPE (10")
 ⑫ 10+81.5 (HIGHLAND AVE) - 38+25.0 RT (HARTFORD AVE) - 86'

PVC SEWER PIPE (15")
 ⑬ 36+40.0 RT - 33+25.0 RT - 38'
 ⑭ 38+25.0 RT - 36+40.0 RT - 186'
 ⑮ 39+92.0 RT - 36+25.0 RT - 168'
 ⑯ 41+92.5 RT - 39+92.0 RT - 200'

MATCH LINE STA. 35+00

MATCH LINE STA. 40+00

DATUM
 VERTICAL NGVD 1929
 HORIZONTAL N/A

NOTES:
 1) STATION AND OFFSETS FOR ALL MANHOLES ARE GIVEN TO THE CENTER OF THE STRUCTURE. THE CONTRACTOR SHALL ROTATE THE TOP SECTIONS SUCH THAT THE FINAL LOCATION OF THE MANHOLE COVER IS NOT WITHIN THE PREDOMINANT VEHICLE WHEEL PATH.
 2) SEE UTILITY CONSTRUCTION GENERAL NOTES SHEET FOR PROPOSED SEWER CONSTRUCTION NOTES.
 3) REFER TO DRAINAGE AND WATER LAYOUT SHEETS FOR PROPOSED DRAINAGE AND WATER LAYOUT.

PROJECT: HARTFORD	PROJECT NO.: RS 0113(40)
DESIGN FILE NAME: z86c027sewldr.DGN	PLOT DATE: 4/11/2012
IPARM FILE NAME:	SURVEY DATE: 1/87
SURVEYED BY: FANTONI	DRAWN BY: E. ATKINS
SQUAD LEADER: KEN UPMAL	SHEET: 104 OF 239

