

SEAMLESS COPPER WATER TUBE (3/4")

55+63 RT ~ 55+63 RT - 24'
 W/ ONE CORPORATION STOP,
 RETAIN EXISTING CURB STOP
 55+91 RT ~ 55+91 LT - 58'
 W/ ONE CORPORATION STOP,
 RETAIN EXISTING CURB STOP
 57+31 RT ~ 57+31 RT - 22'
 W/ ONE CORPORATION STOP,
 ONE EXTENSION SERVICE BOX AND CURB STOP
 57+36 RT ~ 57+36 LT - 58'
 W/ ONE CORPORATION STOP,
 ONE EXTENSION SERVICE BOX AND CURB STOP

SEAMLESS COPPER WATER TUBE (1 1/2")

57+84 RT ~ 57+84 RT - 22'
 W/ ONE CORPORATION STOP,
 RETAIN EXISTING CURB STOP

SEAMLESS COPPER WATER TUBE (2")

45+44 LT ~ 45+61 LT (ADVENT LN) - 16'
 W/ ONE CORPORATION STOP, ONE CURB STOP

DUCTILE IRON PIPE, CEMENT-LINED (4")

55+38 LT ~ 55+29 LT - 50'
 W/ TWO 1/8 BENDS

DUCTILE IRON PIPE, CEMENT-LINED (6")

49+43 LT ~ 49+42 LT (ADVENT LN) - 14'
 50+41 LT ~ 50+47 LT (HEWITT ST) - 6'
 W/ ONE MECHANICAL COUPLING

DUCTILE IRON PIPE, CEMENT-LINED (8")

58+15 RT (HARTFORD AVE) ~ 45+51 LT (ADVENT LN) - 38'
 W/ ONE 1/32 BEND, ONE 8X6X8 TEE, ONE CAP
 58+23 RT (HARTFORD AVE) ~ 50+41 LT (HEWITT ST) - 54'
 W/ TWO 1/8 BENDS, ONE 8X6 REDUCER

DUCTILE IRON PIPE, CEMENT-LINED (10")

58+53 RT ~ 58+76 RT - 38'
 W/ TWO 1/8 BENDS, ONE MECHANICAL COUPLING

DUCTILE IRON PIPE, CEMENT-LINED (12")

55+00 RT ~ 58+62 RT - 362'
 W/ ONE 12X4X12 TEE, TWO 12X8X12 TEES,
 ONE 12X12X12 TEE, ONE CAP

GATE VALVE WITH VALVE BOX

55+29 LT - 4" VALVE
 45+43 LT (ADVENT LN) - 6" VALVE
 50+36 LT (HEWITT ST) - 8" VALVE
 45+46 LT (ADVENT LN) - 8" VALVE
 58+64 RT - 10" VALVE
 58+11 RT - 12" VALVE
 58+57 RT - 12" VALVE

HYDRANT

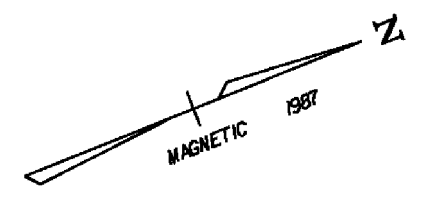
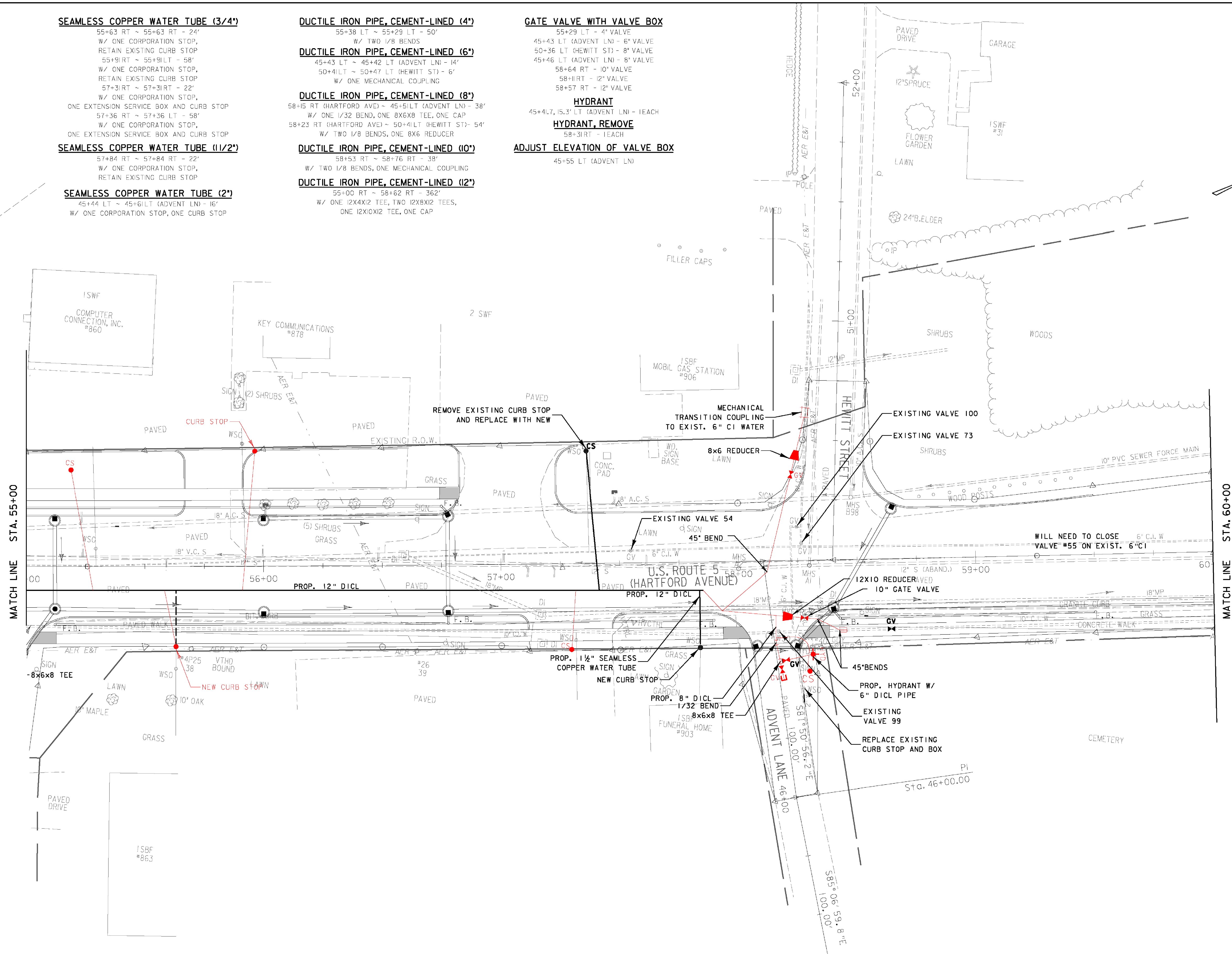
45+41.7, 15.3' LT (ADVENT LN) - TEACH

HYDRANT, REMOVE

58+31 RT - TEACH

ADJUST ELEVATION OF VALVE BOX

45+55 LT (ADVENT LN)



DATUM	
VERTICAL	NGVD 1929
HORIZONTAL	N/A

NOTES:
 1) SEE UTILITY CONSTRUCTION GENERAL NOTES SHEET FOR PROPOSED WATER CONSTRUCTION NOTES AND LEGEND. REFER TO DRAINAGE AND SANITARY SEWER LAYOUT SHEETS FOR PROPOSED DRAINAGE AND SEWER LAYOUT.

PROJECT: HARTFORD	PROJECT NO.: RS 0113(40)
DESIGN FILE NAME: z86c027watbdr.DGN	PLOT DATE: 4/11/2012
IPARM FILE NAME:	SURVEY DATE: 1/87
SURVEYED BY: FANTONI	DRAWN BY: E. ATKINS
SQUAD LEADER: KEN UPMAL	SHEET: 98 OF 239

WATER LAYOUT SHEET 8