

SEAMLESS COPPER WATER TUBE (3/4")

37+15 RT ~ 37+09 LT - 76'
 W/ ONE CORPORATION STOP,
 ONE EXTENSION SERVICE BOX AND CURB STOP
 37+29 RT ~ 37+40 RT - 12'
 W/ ONE CORPORATION STOP,
 ONE EXTENSION SERVICE BOX AND CURB STOP
 38+70 RT ~ 38+70 RT - 26'
 W/ ONE CORPORATION STOP,
 ONE EXTENSION SERVICE BOX AND CURB STOP,
 REMOVE EXISTING CURB STOP
 38+97 RT ~ 38+97 RT - 26'
 W/ ONE CORPORATION STOP,
 ONE EXTENSION SERVICE BOX AND CURB STOP,
 REMOVE EXISTING CURB STOP

SEAMLESS COPPER WATER TUBE (3/4") (CONT.)

6+46 RT ~ 6+62 RT (WORCESTER AVE) - 86'
 W/ ONE CORPORATION STOP,
 ONE EXTENSION SERVICE BOX AND CURB STOP,
 REMOVE EXISTING CURB STOP AT PROPERTY LINE
 6+49 RT ~ 6+41 RT (WORCESTER AVE) - 10'
 W/ ONE CORPORATION STOP
 6+80 RT ~ 6+80 LT (WORCESTER AVE) - 8'
 W/ ONE CORPORATION STOP

SEAMLESS COPPER WATER TUBE (1")

20+59 LT ~ 20+79 LT (HEBAR AVE) - 36'
 W/ ONE CORPORATION STOP,
 ONE EXTENSION SERVICE BOX AND CURB STOP

DUCTILE IRON PIPE, CEMENT-LINED (6")

5+41 LT ~ 5+43 LT (WORCESTER AVE) - 14' PAVED DRIVE
 6+83 RT ~ 6+92 RT (WORCESTER AVE) - 8'
 W/ ONE MECHANICAL COUPLING
 20+57 LT ~ 20+58 LT (HEBAR AVE) - 14'

DUCTILE IRON PIPE, CEMENT-LINED (8")

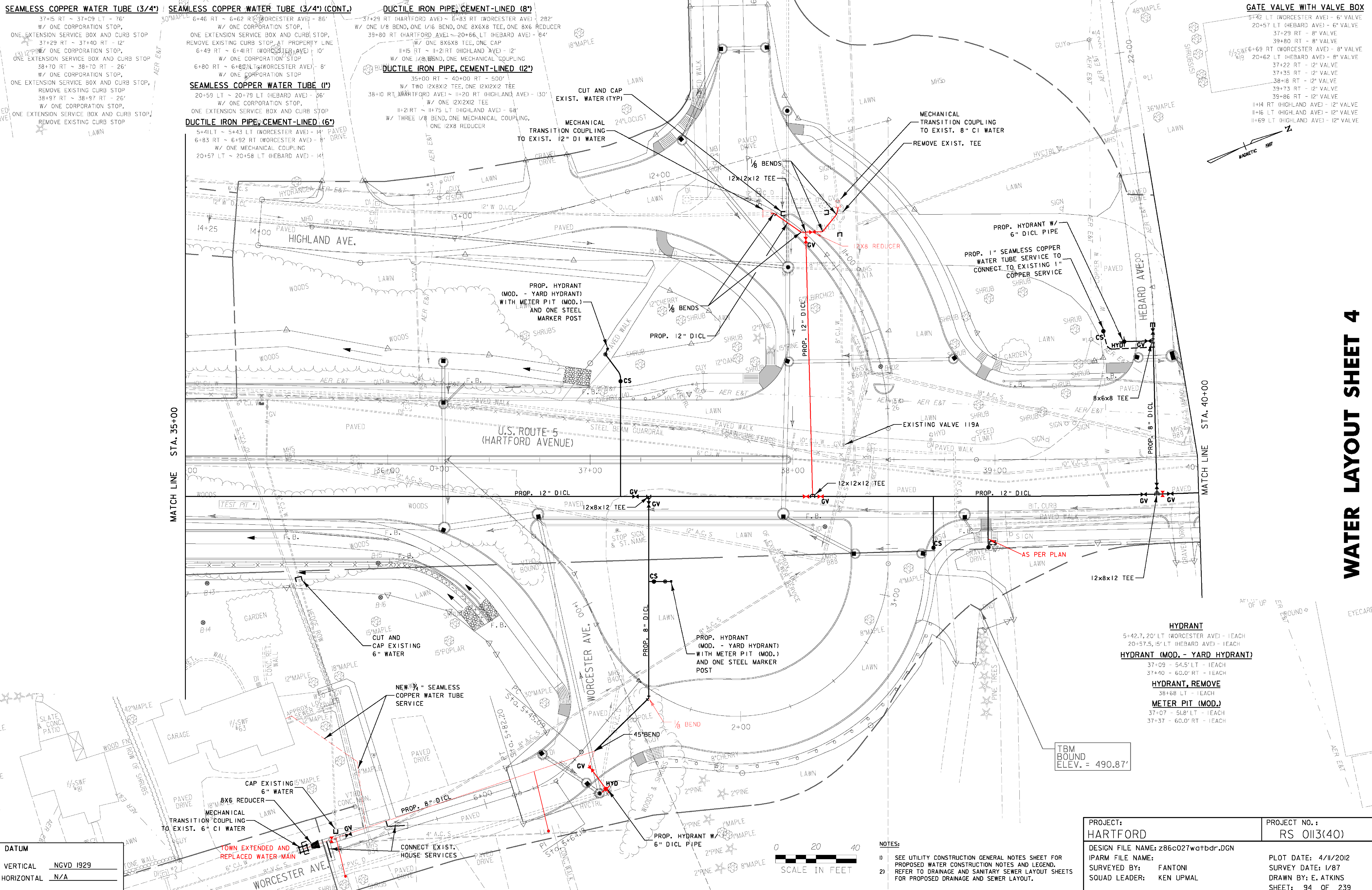
37+29 RT (HARTFORD AVE) ~ 6+83 RT (WORCESTER AVE) - 282'
 W/ ONE 1/8 BEND, ONE 1/6 BEND, ONE 8X6X8 TEE, ONE 8X6 REDUCER
 39+80 RT (HARTFORD AVE) ~ 20+66 LT (HEBAR AVE) - 84'
 W/ ONE 8X6X8 TEE, ONE CAP
 11+15 RT ~ 11+21 RT (HIGHLAND AVE) - 12'
 W/ ONE 1/8 BEND, ONE MECHANICAL COUPLING

DUCTILE IRON PIPE, CEMENT-LINED (12")

35+00 RT ~ 40+00 RT - 500'
 W/ TWO 12X8X12 TEE, ONE 12X12X12 TEE
 38+10 RT (HARTFORD AVE) ~ 11+20 RT (HIGHLAND AVE) - 130'
 W/ ONE 12X12X12 TEE
 11+21 RT ~ 11+75 LT (HIGHLAND AVE) - 68'
 W/ THREE 1/8 BEND, ONE MECHANICAL COUPLING,
 ONE 12X8 REDUCER

GATE VALVE WITH VALVE BOX

5+42 LT (WORCESTER AVE) - 6" VALVE
 20+57 LT (HEBAR AVE) - 6" VALVE
 37+29 RT - 8" VALVE
 39+80 RT - 8" VALVE
 37+22 RT - 12" VALVE
 20+62 LT (HEBAR AVE) - 8" VALVE
 37+35 RT - 12" VALVE
 38+16 RT - 12" VALVE
 39+73 RT - 12" VALVE
 39+86 RT - 12" VALVE
 11+14 RT (HIGHLAND AVE) - 12" VALVE
 11+16 LT (HIGHLAND AVE) - 12" VALVE
 11+69 LT (HIGHLAND AVE) - 12" VALVE



WATER LAYOUT SHEET 4