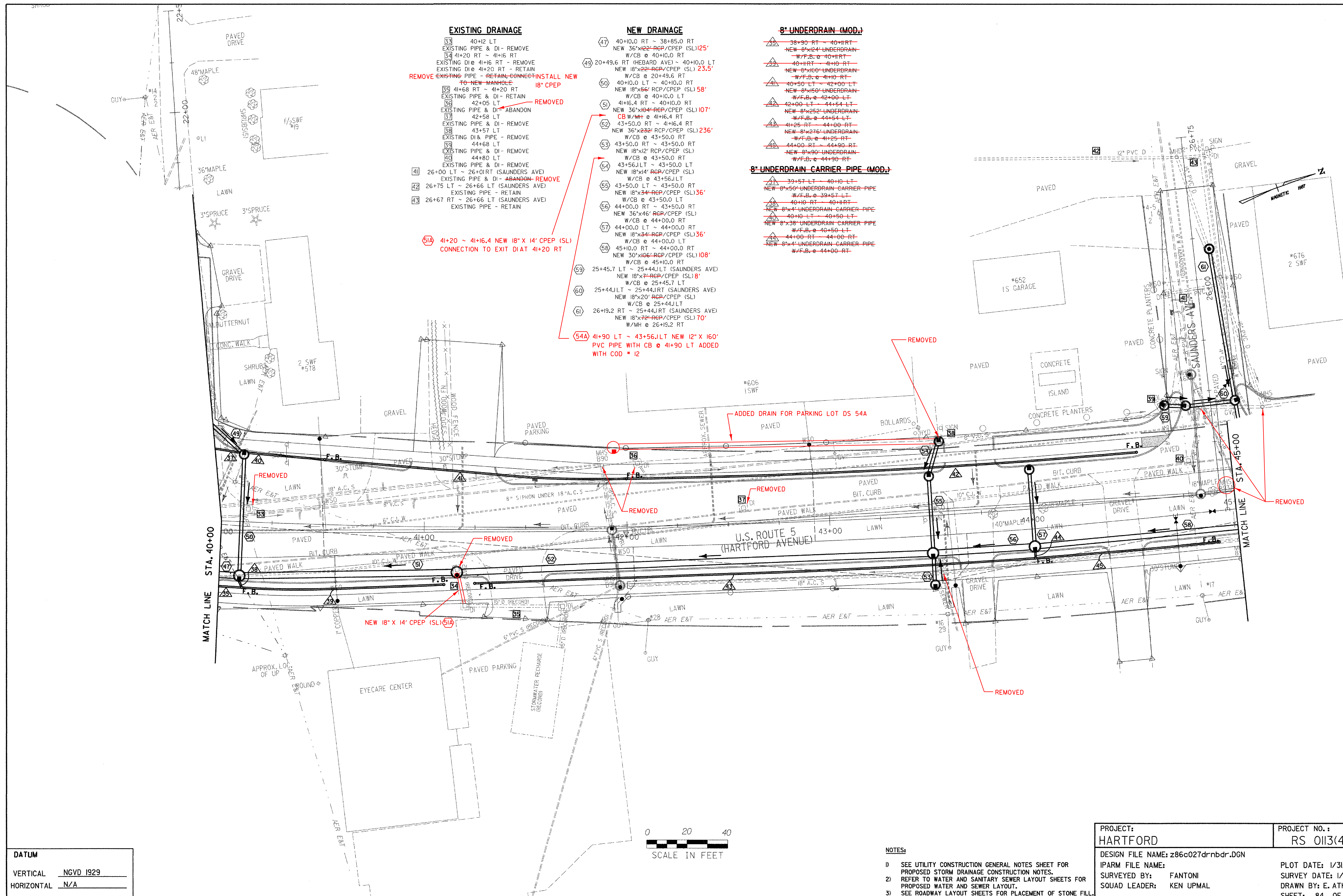
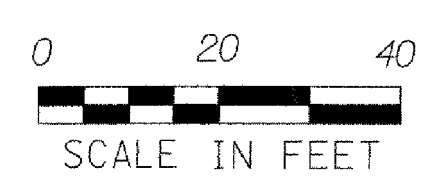


- | | | |
|--|--|--|
| <p>EXISTING DRAINAGE</p> <p>53 40+12 LT
EXISTING PIPE & DI - REMOVE</p> <p>54 41+20 RT ~ 41+16 RT
EXISTING DI @ 41+16 RT - REMOVE
EXISTING DI @ 41+20 RT - RETAIN
REMOVE EXISTING PIPE - RETAIN, CONNECT, INSTALL NEW TO NEW MANHOLE 18" CPEP</p> <p>55 41+68 RT ~ 41+20 RT
EXISTING PIPE & DI - RETAIN</p> <p>56 42+05 LT
EXISTING PIPE & DI - ABANDON</p> <p>57 42+58 LT
EXISTING PIPE & DI - REMOVE</p> <p>58 43+57 LT
EXISTING DI & PIPE - REMOVE</p> <p>59 44+68 LT
EXISTING PIPE & DI - REMOVE</p> <p>60 44+80 LT
EXISTING PIPE & DI - REMOVE</p> <p>41 26+00 LT ~ 26+01 RT (SAUNDERS AVE)
EXISTING PIPE & DI - ABANDON - REMOVE</p> <p>42 26+75 LT ~ 26+66 LT (SAUNDERS AVE)
EXISTING PIPE - RETAIN</p> <p>43 26+67 RT ~ 26+66 LT (SAUNDERS AVE)
EXISTING PIPE - RETAIN</p> <p>51A 41+20 ~ 41+16.4 NEW 18" X 14" CPEP (SL)
CONNECTION TO EXIT DI AT 41+20 RT</p> | <p>NEW DRAINAGE</p> <p>47 40+10.0 RT ~ 38+85.0 RT
NEW 36"x22" RCP/CPEP (SL) 125'
W/CB @ 40+10.0 RT</p> <p>49 20+49.6 RT (HEBARD AVE) ~ 40+10.0 LT
NEW 18"x22" RCP/CPEP (SL) 23.5'
W/CB @ 20+49.6 RT</p> <p>50 40+10.0 LT ~ 40+10.0 RT
NEW 18"x66" RCP/CPEP (SL) 58'
W/CB @ 40+10.0 LT</p> <p>51 41+6.4 RT ~ 40+10.0 LT
NEW 36"x104" RCP/CPEP (SL) 107'
CB W/MH @ 41+6.4 RT</p> <p>52 43+50.0 RT ~ 41+6.4 RT
NEW 36"x232" RCP/CPEP (SL) 236'
W/CB @ 43+50.0 RT</p> <p>53 43+50.0 RT ~ 43+50.0 RT
NEW 18"x12" RCP/CPEP (SL)
W/CB @ 43+50.0 RT</p> <p>54 43+56.1 LT ~ 43+50.0 LT
NEW 18"x14" RCP/CPEP (SL)
W/CB @ 43+56.1 LT</p> <p>55 43+50.0 LT ~ 43+50.0 RT
NEW 18"x34" RCP/CPEP (SL) 36'
W/CB @ 43+50.0 LT</p> <p>56 44+00.0 RT ~ 43+50.0 RT
NEW 36"x46" RCP/CPEP (SL)
W/CB @ 44+00.0 RT</p> <p>57 44+00.0 LT ~ 44+00.0 RT
NEW 18"x34" RCP/CPEP (SL) 36'
W/CB @ 44+00.0 LT</p> <p>58 45+10.0 RT ~ 44+00.0 RT
NEW 30"x106" RCP/CPEP (SL) 108'
W/CB @ 45+10.0 RT</p> <p>59 25+45.7 LT ~ 25+44.1 LT (SAUNDERS AVE)
NEW 18"x7" RCP/CPEP (SL) 8'
W/CB @ 25+45.7 LT</p> <p>60 25+44.1 LT ~ 25+44.1 RT (SAUNDERS AVE)
NEW 18"x20" RCP/CPEP (SL)
W/CB @ 25+44.1 LT</p> <p>61 26+19.2 RT ~ 25+44.1 RT (SAUNDERS AVE)
NEW 18"x22" RCP/CPEP (SL) 70'
W/MH @ 26+19.2 RT</p> <p>54A 41+90 LT ~ 43+56.1 LT NEW 12" X 16"
PVC PIPE WITH CB @ 41+90 LT ADDED
WITH COD = 12</p> | <p>8" UNDERDRAIN (MOD.)</p> <p>38+90 RT ~ 40+10 RT
NEW 8"x24" UNDERDRAIN
W/F.B. @ 40+10 RT</p> <p>40+10 RT ~ 41+10 RT
NEW 8"x60" UNDERDRAIN
W/F.B. @ 41+10 RT</p> <p>41+10 LT ~ 42+00 LT
NEW 8"x50" UNDERDRAIN
W/F.B. @ 42+00 LT</p> <p>42+00 LT ~ 44+54 LT
NEW 8"x252" UNDERDRAIN
W/F.B. @ 44+54 LT</p> <p>41+25 RT ~ 44+00 RT
NEW 8"x276" UNDERDRAIN
W/F.B. @ 41+25 RT</p> <p>44+00 RT ~ 44+90 RT
NEW 8"x90" UNDERDRAIN
W/F.B. @ 44+90 RT</p> <p>8" UNDERDRAIN CARRIER PIPE (MOD.)</p> <p>39+57 LT ~ 40+10 LT
NEW 8"x50" UNDERDRAIN CARRIER PIPE
W/F.B. @ 39+57 LT</p> <p>40+10 RT ~ 40+10 RT
NEW 8"x4" UNDERDRAIN CARRIER PIPE</p> <p>40+10 LT ~ 40+50 LT
NEW 8"x38" UNDERDRAIN CARRIER PIPE
W/F.B. @ 40+50 LT</p> <p>44+00 RT ~ 44+00 RT
NEW 8"x4" UNDERDRAIN CARRIER PIPE
W/F.B. @ 44+00 RT</p> |
|--|--|--|



DATUM

VERTICAL	NGVD 1929
HORIZONTAL	N/A



- NOTES:**
- SEE UTILITY CONSTRUCTION GENERAL NOTES SHEET FOR PROPOSED STORM DRAINAGE CONSTRUCTION NOTES.
 - REFER TO WATER AND SANITARY SEWER LAYOUT SHEETS FOR PROPOSED WATER AND SEWER LAYOUT.
 - SEE ROADWAY LAYOUT SHEETS FOR PLACEMENT OF STONE FILL.

PROJECT: HARTFORD	PROJECT NO. : RS 0113(40)
DESIGN FILE NAME: z86c027drnbnr.DGN	PLOT DATE: 1/31/2007
IPARM FILE NAME:	SURVEY DATE: 1/87
SURVEYED BY: FANTONI	DRAWN BY: E. ATKINS
SQUAD LEADER: KEN UPMAL	SHEET: 84 OF 239