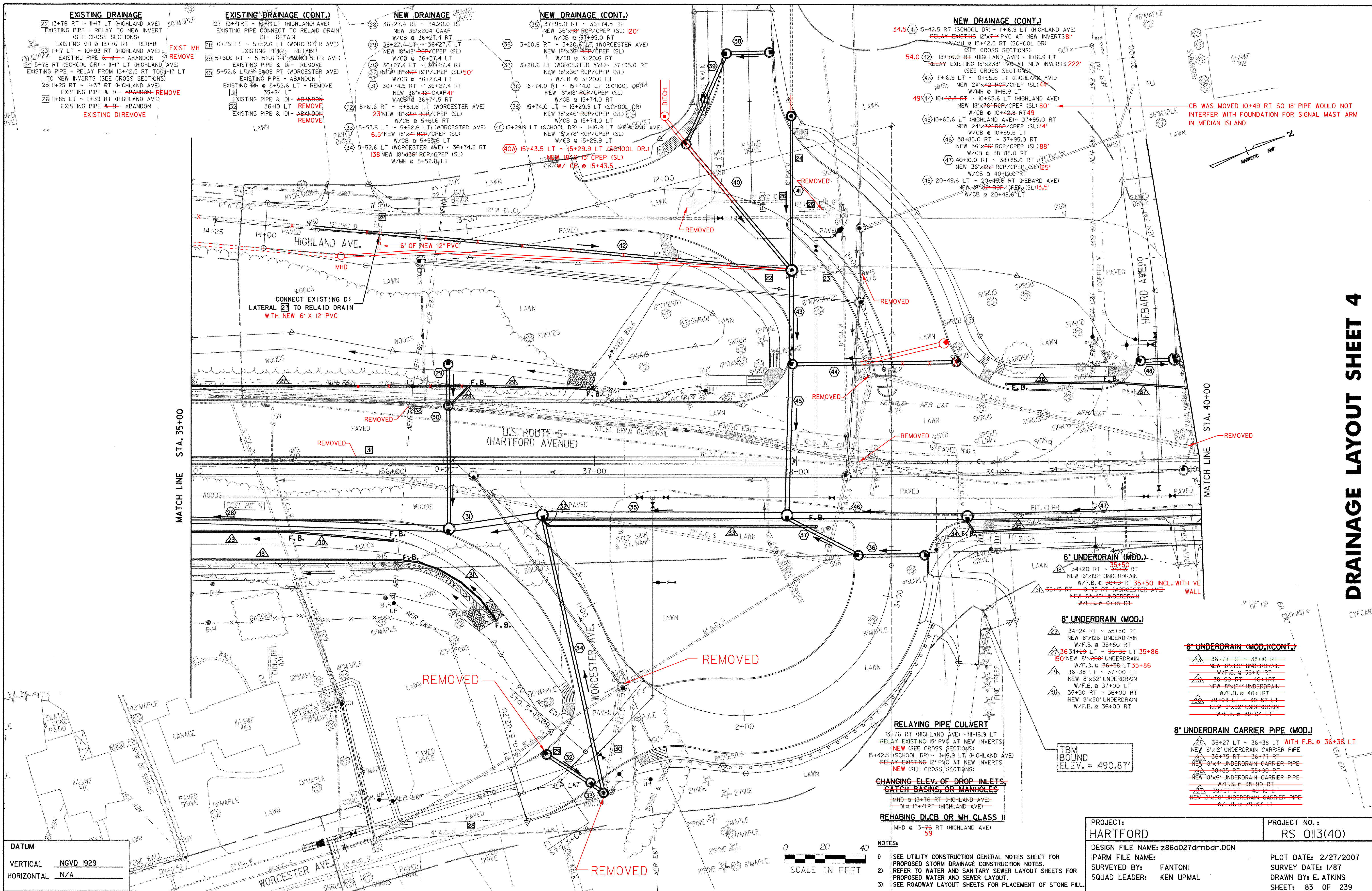


DRAINAGE LAYOUT SHEET 4



EXISTING DRAINAGE

- 22 13+76 RT ~ 11+17 LT (HIGHLAND AVE) EXISTING PIPE - RELAY TO NEW INVERT (SEE CROSS SECTIONS)
- 23 11+7 LT ~ 10+93 RT (HIGHLAND AVE) EXISTING PIPE - ABANDON
- 24 15+78 RT (SCHOOL DR) ~ 11+17 LT (HIGHLAND AVE) EXISTING PIPE - RELAY FROM 15+42.5 RT TO 11+17 LT TO NEW INVERTS (SEE CROSS SECTIONS)
- 25 11+25 RT ~ 11+37 RT (HIGHLAND AVE) EXISTING PIPE & DI - ABANDON REMOVE
- 26 11+85 LT ~ 11+39 RT (HIGHLAND AVE) EXISTING PIPE & DI - ABANDON REMOVE

EXISTING DRAINAGE (CONT.)

- 27 13+41 RT ~ 13+11 LT (HIGHLAND AVE) EXISTING PIPE CONNECT TO RELAY DRAIN DI - RETAIN
- 28 6+75 LT ~ 5+52.6 LT (WORCESTER AVE) EXISTING PIPE & DI - REMOVE
- 29 5+61.6 RT ~ 5+52.6 LT (WORCESTER AVE) EXISTING PIPE - ABANDON
- 30 5+52.6 LT (WORCESTER AVE) EXISTING PIPE - ABANDON
- 31 11+25 RT ~ 11+37 RT (HIGHLAND AVE) EXISTING PIPE & DI - REMOVE
- 32 35+84 LT EXISTING PIPE & DI - ABANDON REMOVE
- 33 36+10 LT EXISTING PIPE & DI - ABANDON REMOVE
- 34 36+10 LT EXISTING PIPE & DI - ABANDON REMOVE

NEW DRAINAGE

- 28 6+75 LT ~ 5+52.6 LT (WORCESTER AVE) EXISTING PIPE & DI - REMOVE
- 29 5+61.6 RT ~ 5+52.6 LT (WORCESTER AVE) EXISTING PIPE - ABANDON
- 30 5+52.6 LT (WORCESTER AVE) EXISTING PIPE - ABANDON
- 31 11+25 RT ~ 11+37 RT (HIGHLAND AVE) EXISTING PIPE & DI - REMOVE
- 32 35+84 LT EXISTING PIPE & DI - ABANDON REMOVE
- 33 36+10 LT EXISTING PIPE & DI - ABANDON REMOVE
- 34 36+10 LT EXISTING PIPE & DI - ABANDON REMOVE

NEW DRAINAGE (CONT.)

- 35 37+95.0 RT ~ 36+74.5 RT NEW 36"x204" RCP/CPEP (SL) 120" W/CB @ 37+95.0 RT
- 36 3+20.6 RT ~ 3+20.6 LT (WORCESTER AVE) NEW 18"x30" RCP/CPEP (SL) W/CB @ 3+20.6 RT
- 37 3+20.6 LT (WORCESTER AVE) ~ 37+95.0 RT NEW 18"x36" RCP/CPEP (SL) W/CB @ 3+20.6 LT
- 38 15+74.0 RT ~ 15+74.0 LT (SCHOOL DR) NEW 18"x18" RCP/CPEP (SL) W/CB @ 15+74.0 RT
- 39 15+74.0 LT ~ 15+29.9 LT (SCHOOL DR) NEW 18"x46" RCP/CPEP (SL) W/CB @ 15+74.0 LT
- 40 15+29.9 LT (SCHOOL DR) ~ 11+6.9 LT (HIGHLAND AVE) NEW 18"x78" RCP/CPEP (SL) W/CB @ 15+29.9 LT

NEW DRAINAGE (CONT.)

- 41 15+42.5 RT (SCHOOL DR) ~ 11+6.9 LT (HIGHLAND AVE) RELAY EXISTING 12"x74" PVC AT NEW INVERTS 81' W/MH @ 15+42.5 RT (SCHOOL DR) (SEE CROSS SECTIONS)
- 42 11+6.9 LT ~ 10+65.6 LT (HIGHLAND AVE) MHS NEW 24"x42" RCP/CPEP (SL) 44" W/MH @ 11+6.9 LT
- 43 10+42.8 RT ~ 10+65.6 LT (HIGHLAND AVE) NEW 18"x78" RCP/CPEP (SL) 80" W/CB @ 10+42.8 RT 49
- 44 10+65.6 LT (HIGHLAND AVE) ~ 37+95.0 RT NEW 24"x72" RCP/CPEP (SL) 74" W/CB @ 10+65.6 LT
- 45 38+85.0 RT ~ 37+95.0 RT NEW 36"x86" RCP/CPEP (SL) 88" W/CB @ 38+85.0 RT
- 46 40+10.0 RT ~ 38+85.0 RT HYCTRL NEW 36"x82" RCP/CPEP (SL) 125" W/CB @ 40+10.0 RT
- 47 20+49.6 LT ~ 20+49.6 RT (HEBARD AVE) NEW 18"x18" RCP/CPEP (SL) 13.5' W/CB @ 20+49.6 LT

NEW DRAINAGE (CONT.)

- 48 15+42.5 RT (SCHOOL DR) ~ 11+6.9 LT (HIGHLAND AVE) RELAY EXISTING 12"x74" PVC AT NEW INVERTS 81' W/MH @ 15+42.5 RT (SCHOOL DR) (SEE CROSS SECTIONS)
- 49 11+6.9 LT ~ 10+65.6 LT (HIGHLAND AVE) MHS NEW 24"x42" RCP/CPEP (SL) 44" W/MH @ 11+6.9 LT
- 50 10+42.8 RT ~ 10+65.6 LT (HIGHLAND AVE) NEW 18"x78" RCP/CPEP (SL) 80" W/CB @ 10+42.8 RT 49
- 51 10+65.6 LT (HIGHLAND AVE) ~ 37+95.0 RT NEW 24"x72" RCP/CPEP (SL) 74" W/CB @ 10+65.6 LT
- 52 38+85.0 RT ~ 37+95.0 RT NEW 36"x86" RCP/CPEP (SL) 88" W/CB @ 38+85.0 RT
- 53 40+10.0 RT ~ 38+85.0 RT HYCTRL NEW 36"x82" RCP/CPEP (SL) 125" W/CB @ 40+10.0 RT
- 54 20+49.6 LT ~ 20+49.6 RT (HEBARD AVE) NEW 18"x18" RCP/CPEP (SL) 13.5' W/CB @ 20+49.6 LT

DATUM

VERTICAL NGVD 1929
 HORIZONTAL N/A

RELAYING PIPE/CULVERT
 13+76 RT (HIGHLAND AVE) ~ 11+6.9 LT
 RELAY EXISTING 12" PVC AT NEW INVERTS
 NEW (SEE CROSS SECTIONS)
 15+42.5 (SCHOOL DR) ~ 11+6.9 LT (HIGHLAND AVE)
 RELAY EXISTING 12" PVC AT NEW INVERTS
 NEW (SEE CROSS SECTIONS)

CHANGING ELEV. OF DROP INLETS, CATCH BASINS, OR MANHOLES
 MHD @ 13+76 RT (HIGHLAND AVE)
 DI @ 13+41 RT (HIGHLAND AVE)

REHABING DI, CB OR MH CLASS II
 MHD @ 13+76 RT (HIGHLAND AVE)
 59

- 6" UNDERDRAIN (MOD.)**
 - 34+20 RT ~ 35+50 RT NEW 6"x192" UNDERDRAIN W/F.B. @ 36+13 RT 35+50 INCL. WITH VE WALL
 - 36+13 RT ~ 0+75 RT (WORCESTER AVE) NEW 6"x48" UNDERDRAIN W/F.B. @ 0+75 RT
- 8" UNDERDRAIN (MOD.)**
 - 34+24 RT ~ 35+50 RT NEW 8"x126" UNDERDRAIN W/F.B. @ 35+50 RT
 - 36 34+29 LT ~ 36+36 LT 35+86 150" NEW 8"x208" UNDERDRAIN W/F.B. @ 36+36 LT 35+86
 - 36+38 LT ~ 37+00 LT NEW 8"x62" UNDERDRAIN W/F.B. @ 37+00 LT
 - 35+50 RT ~ 36+00 RT NEW 8"x50" UNDERDRAIN W/F.B. @ 36+00 RT
- 8" UNDERDRAIN (MOD.) (CONT.)**
 - 36+77 RT ~ 38+10 RT NEW 8"x132" UNDERDRAIN W/F.B. @ 38+10 RT
 - 38+90 RT ~ 40+10 RT NEW 8"x124" UNDERDRAIN W/F.B. @ 40+10 RT
 - 39+04 LT ~ 39+57 LT NEW 8"x52" UNDERDRAIN W/F.B. @ 39+04 LT
- 8" UNDERDRAIN CARRIER PIPE (MOD.)**
 - 36+27 LT ~ 36+38 LT WITH F.B. @ 36+38 LT NEW 8"x12" UNDERDRAIN CARRIER PIPE
 - 36+75 RT ~ 36+77 RT NEW 8"x4" UNDERDRAIN CARRIER PIPE
 - 38+05 RT ~ 38+90 RT NEW 8"x6" UNDERDRAIN CARRIER PIPE W/F.B. @ 38+90 RT
 - 39+57 LT ~ 40+10 RT NEW 8"x50" UNDERDRAIN CARRIER PIPE W/F.B. @ 39+57 LT

TBM BOUND ELEV. = 490.87'

PROJECT: HARTFORD	PROJECT NO. : RS 0113(40)
DESIGN FILE NAME: z86c027drnbr.DGN	PLOT DATE: 2/27/2007
IPARM FILE NAME:	SURVEY DATE: 1/87
SURVEYED BY: FANTONI	DRAWN BY: E. ATKINS
SQUAD LEADER: KEN UPMAL	SHEET: 83 OF 239

NOTES:

- SEE UTILITY CONSTRUCTION GENERAL NOTES SHEET FOR PROPOSED STORM DRAINAGE CONSTRUCTION NOTES.
- REFER TO WATER AND SANITARY SEWER LAYOUT SHEETS FOR PROPOSED WATER AND SEWER LAYOUT.
- SEE ROADWAY LAYOUT SHEETS FOR PLACEMENT OF STONE FILL.