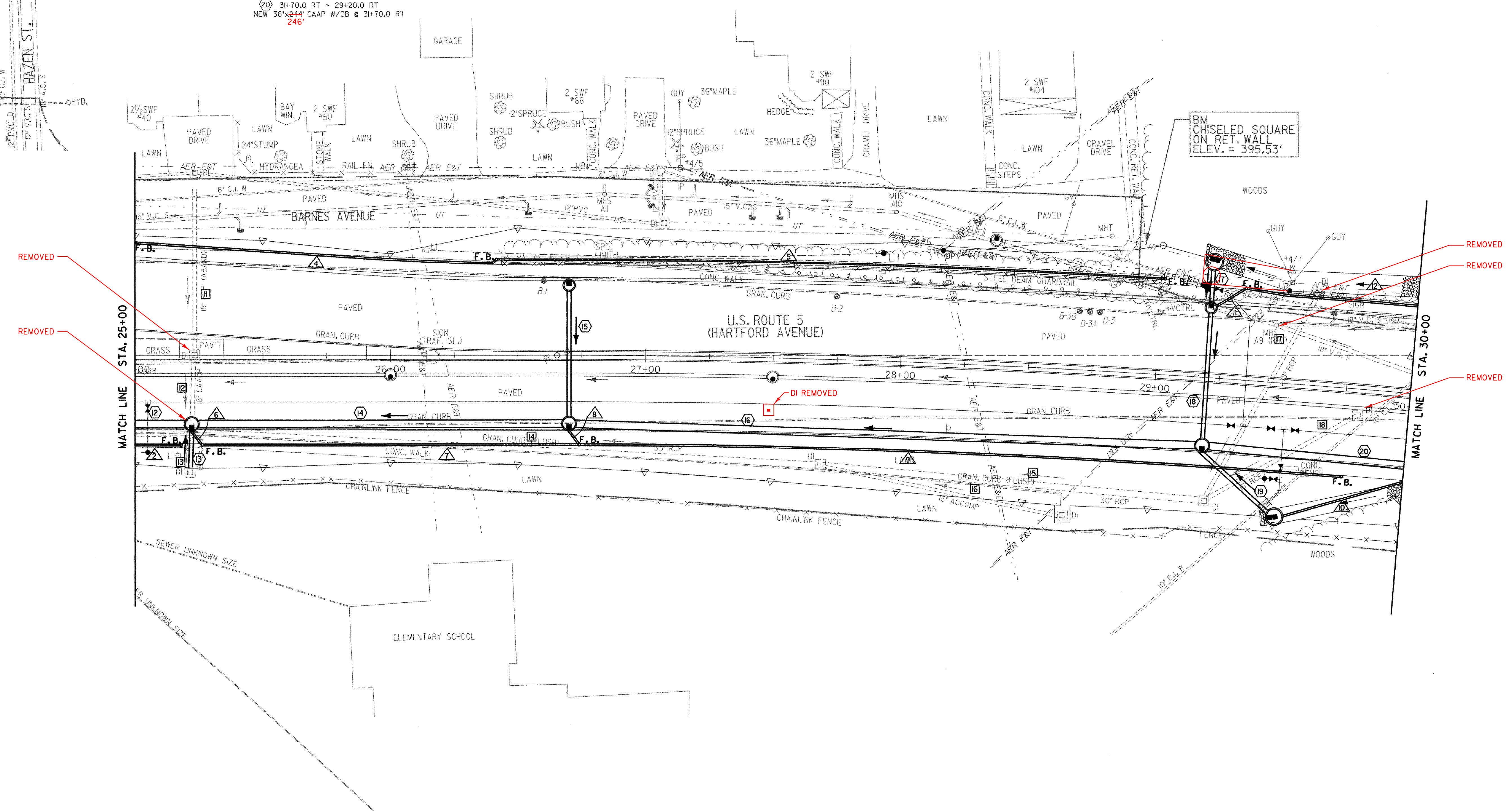
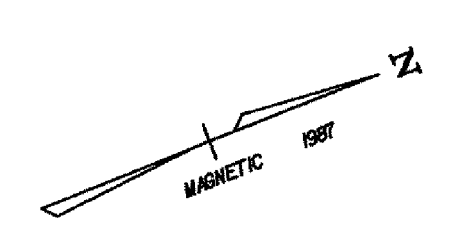


- | | | | |
|--|---|--|--|
| <p>EXISTING DRAINAGE</p> <p>1 25+23.5 LT ~ 25+23.5 E
EXISTING PIPE - ABANDON</p> <p>2 25+23.5 E ~ 25+22.5 RT REMOVE
EXISTING PIPE & DI @ 25+23.5 E - ABANDON</p> <p>3 25+21.6 RT ~ 25+22.5 RT
EXISTING PIPE - REMOVE</p> <p>4 27+69 RT ~ 25+22.5 RT
EXISTING DI - RETAIN</p> <p>5 29+21 RT ~ 27+69 RT
EXISTING PIPE & DI - ABANDON</p> <p>6 28+65 RT ~ 27+69 RT
EXISTING PIPE & DI - ABANDON</p> <p>7 29+61 LT ~ 29+21 RT REMOVE
EXISTING PIPE & DI - ABANDON</p> <p>8 29+80 RT ~ 29+21 RT
EXISTING PIPE & DI - ABANDON</p> | <p>NEW DRAINAGE</p> <p>9 25+22.2 RT ~ 24+20.0 RT
NEW 36"x100" CAAP W/DROP STRUCTURE @ 25+22.2 RT</p> <p>10 25+21.6 RT ~ 25+22.2 RT
NEW 18"x14" RCP/CPEP (SL)</p> <p>11 26+70.0 RT ~ 25+22.2 RT
NEW 36"x144" CAAP W/CB @ 26+70.0 RT</p> <p>12 26+70.0 LT ~ 26+70.0 RT
NEW 18"x50" RCP/CPEP (SL)</p> <p>13 29+20.0 RT ~ 26+70.0 RT
NEW 36"x244" CAAP W/CB @ 29+20.0 RT</p> <p>14 29+20.0 LT ~ 29+20.0 LT
NEW 18"x14" RCP/CPEP (SL)</p> <p>15 29+20.0 LT ~ 29+20.0 LT
W/CB @ 29+20.0 LT</p> <p>16 29+50.0 RT ~ 29+20.0 RT
NEW 18"x50" RCP/CPEP (SL)</p> <p>17 29+50.0 RT ~ 29+20.0 RT
W/CB @ 29+20.0 LT</p> <p>18 31+70.0 RT ~ 29+20.0 RT
NEW 18"x34" RCP/CPEP (SL)</p> <p>19 31+70.0 RT ~ 29+20.0 RT
W/CB @ 29+20.0 RT</p> <p>20 31+70.0 RT ~ 29+20.0 RT
NEW 36"x244" CAAP W/CB @ 31+70.0 RT</p> | <p>6" UNDERDRAIN (MOD.)</p> <p>21 26+41.5 LT ~ 29+01.5 LT
NEW 6"x262" UNDERDRAIN
W/F.B. @ 26+41.5 LT AND 29+01.5 LT</p> <p>8" UNDERDRAIN (MOD.)</p> <p>22 24+24 RT ~ 25+18 RT
NEW 8"x94" UNDERDRAIN
W/F.B. @ 25+18 RT (BURIED)</p> <p>23 25+00 LT ~ 26+41.5 LT
NEW 8"x142"
NEW 8"x148" UNDERDRAIN
W/F.B. AT 26+74 RT</p> <p>24 26+74 RT ~ 29+75 RT 29+20
NEW 8"x298" UNDERDRAIN
W/F.B. AT 29+75 RT 29+20</p> <p>25 29+35 LT ~ 31+65 LT 50
NEW 8"x233" UNDERDRAIN
W/F.B. AT 31+65 LT 50</p> | <p>8" UNDERDRAIN CARRIER PIPE (MOD.)</p> <p>26 25+22 RT ~ 25+26 RT
NEW 8"x6" UNDERDRAIN CARRIER PIPE
W/F.B. @ 25+26 RT</p> <p>27 26+70 RT ~ 26+74 RT
NEW 8"x6" UNDERDRAIN CARRIER PIPE
29+50 RT ~ 30+00 RT</p> <p>28 29+20 LT ~ 29+35 LT
NEW 8"x14" UNDERDRAIN CARRIER PIPE
W/F.B. @ 29+35 LT (BURIED)</p> <p>REHABING DI, CB OR MH CLASS II</p> <p>25+21.6 RT</p> |
|--|---|--|--|



REMOVED

REMOVED

REMOVED

REMOVED

REMOVED

DATUM	
VERTICAL	NGVD 1929
HORIZONTAL	N/A



- NOTES:**
- SEE UTILITY CONSTRUCTION GENERAL NOTES SHEET FOR PROPOSED STORM DRAINAGE CONSTRUCTION NOTES.
 - REFER TO WATER AND SANITARY SEWER LAYOUT SHEETS FOR PROPOSED WATER AND SEWER LAYOUT.
 - SEE ROADWAY LAYOUT SHEETS FOR PLACEMENT OF STONE FILL.

PROJECT: HARTFORD	PROJECT NO. : RS 0113(40)
DESIGN FILE NAME: z86c027drnbnr.DGN	PLOT DATE: 2/27/2007
IPARM FILE NAME:	SURVEY DATE: 1/87
SURVEYED BY: FANTONI	DRAWN BY: E. ATKINS
SQUAD LEADER: KEN UPMAL	SHEET: 81 OF 239

DRAINAGE LAYOUT SHEET 2