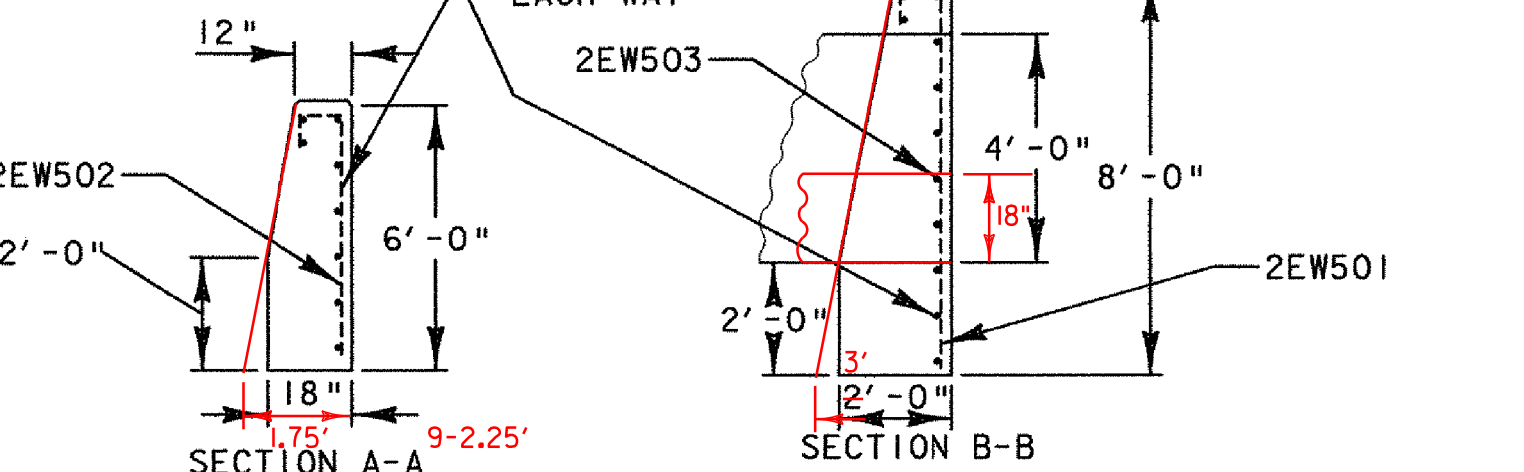
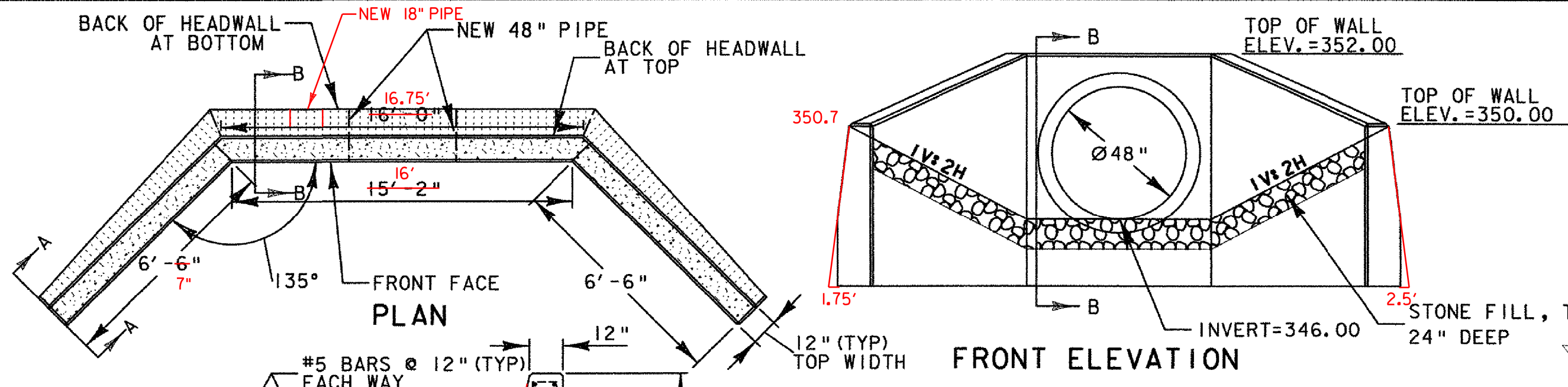


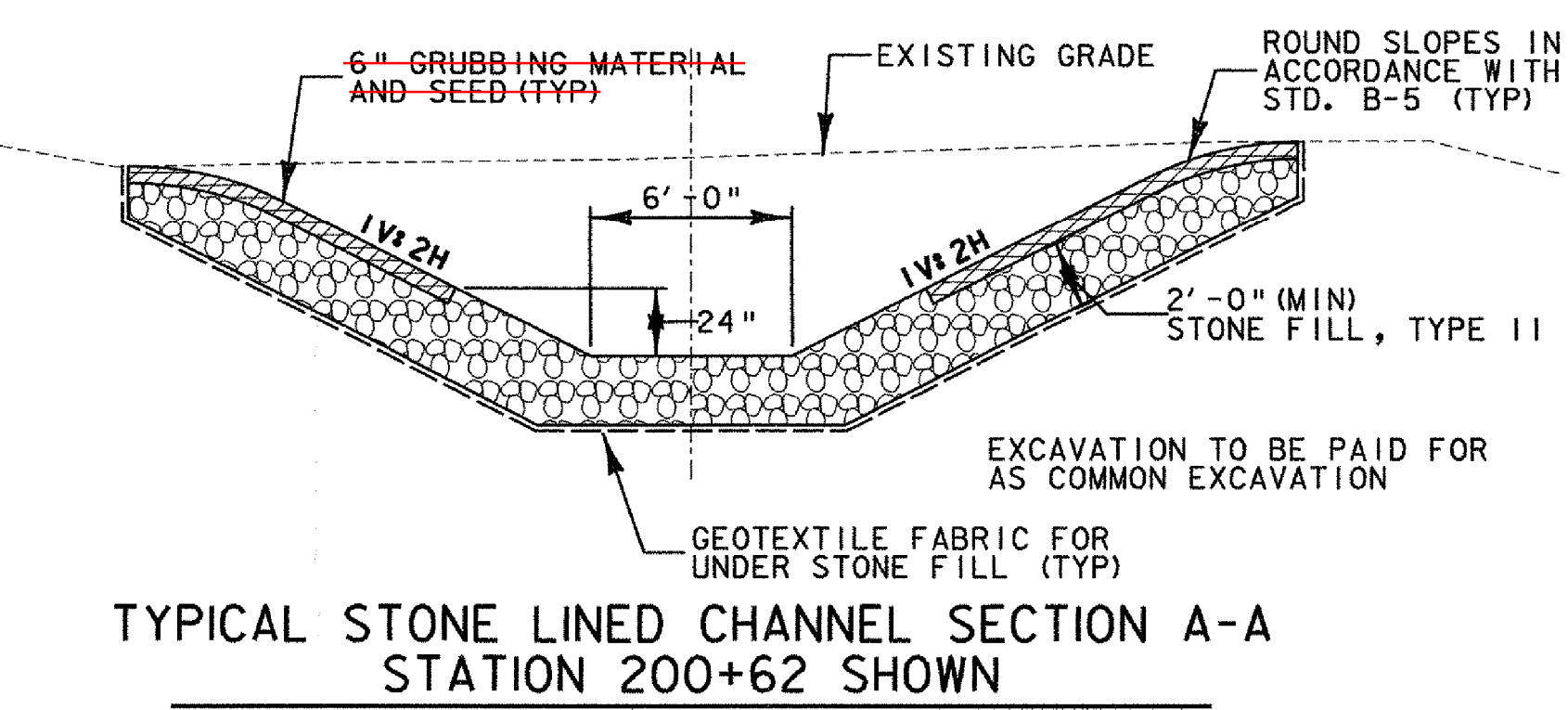
**NOTES:**

1. ABANDON, FILL AND PLUG EXISTING PIPES IN ACCORDANCE WITH STANDARD SPECIFICATIONS. FILL EXISTING DI WITH CONCRETE, CLASS B TO PROPOSED SUMP ELEVATION OF 352.50.
2. PROPOSED REINFORCED CAST-IN-PLACE CONCRETE HEADWALL SHALL BE CONSTRUCTED IN ACCORDANCE WITH STANDARD DETAIL D-2 AND THE DIMENSIONS PROVIDED IN THE HEADWALL DETAIL ON THIS SHEET.
3. 6-INCHES OF GRUBBING MATERIAL AND SEED SHALL BE PLACED OVER THE ENTIRE SIDE SLOPES OF THE STONE FILL DITCHES FROM THE NEW HEADWALL TO THE OUTFALL AS DIRECTED BY THE ENGINEER. SEE TYPICAL SECTION A-A ON THIS SHEET.
4. REFER TO THE UTILITY GENERAL NOTES SHEET AND STANDARD SPECIFICATIONS FOR ADDITIONAL REQUIREMENTS.
5. REFER TO THE DRAINAGE LAYOUT SHEETS AND CROSS SECTION FOR CONTINUATION OF DRAINAGE.
6. REFER TO EROSION CONTROL SHEETS FOR REQUIRED EROSION CONTROL MEASURES.
7. THE CONTRACTOR SHALL ADHERE TO ALL REQUIREMENTS SET FORTH IN THE STREAM ALTERATION PERMIT.
8. TEMPORARY FILLS SHALL CONSIST OF CLEAN STONE ONLY. DISTURBED AREAS SHALL BE REVEGETATED OR STABILIZED WITH STONE FILL IMMEDIATELY. AREAS OF STONE FILL SHALL BE COVERED WITH GRUBBING MATERIAL AND SEEDED DOWN TO THE SPRING HIGH WATER LINE EXCEPT WITHIN CHANNEL AS SHOWN.

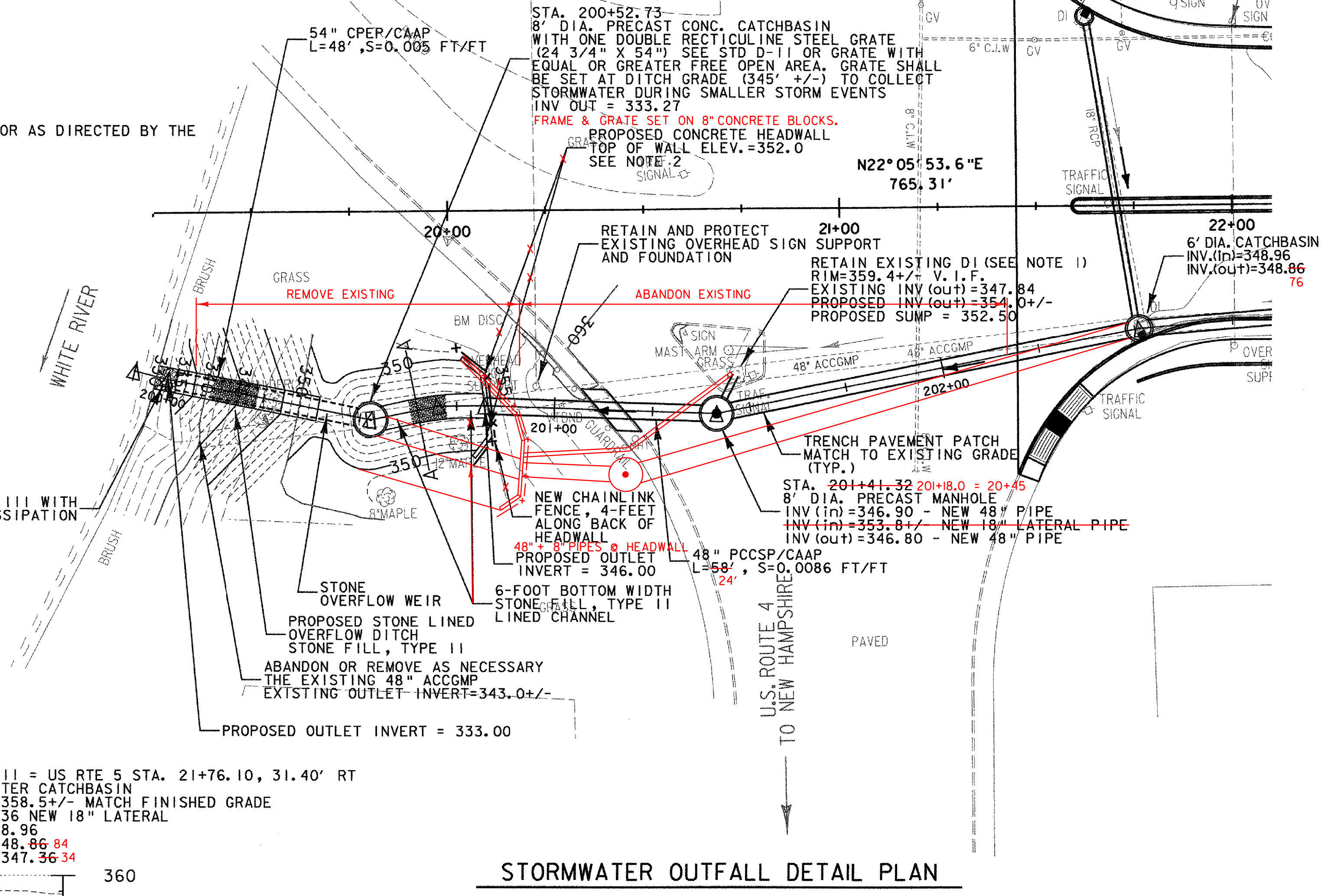


- NOTES:**
1. THE CONTRACTOR SHALL FIELD VERIFY ALL DIMENSIONS AND ADJUST AS REQUIRED OR AS DIRECTED BY THE ENGINEER TO MATCH FIELD CONDITIONS.
  2. EXPOSED EDGES AND CORNERS SHALL HAVE 1" CHAMFERS.
  3. CONCRETE SHALL BE CONCRETE, CLASS B.
  4. 1 1/2" MINIMUM CLEAR COVER REQUIRED TO ALL STEEL REINFORCING.
  5. SEE REINFORCING SCHEDULE SHEET FOR REINFORCING.

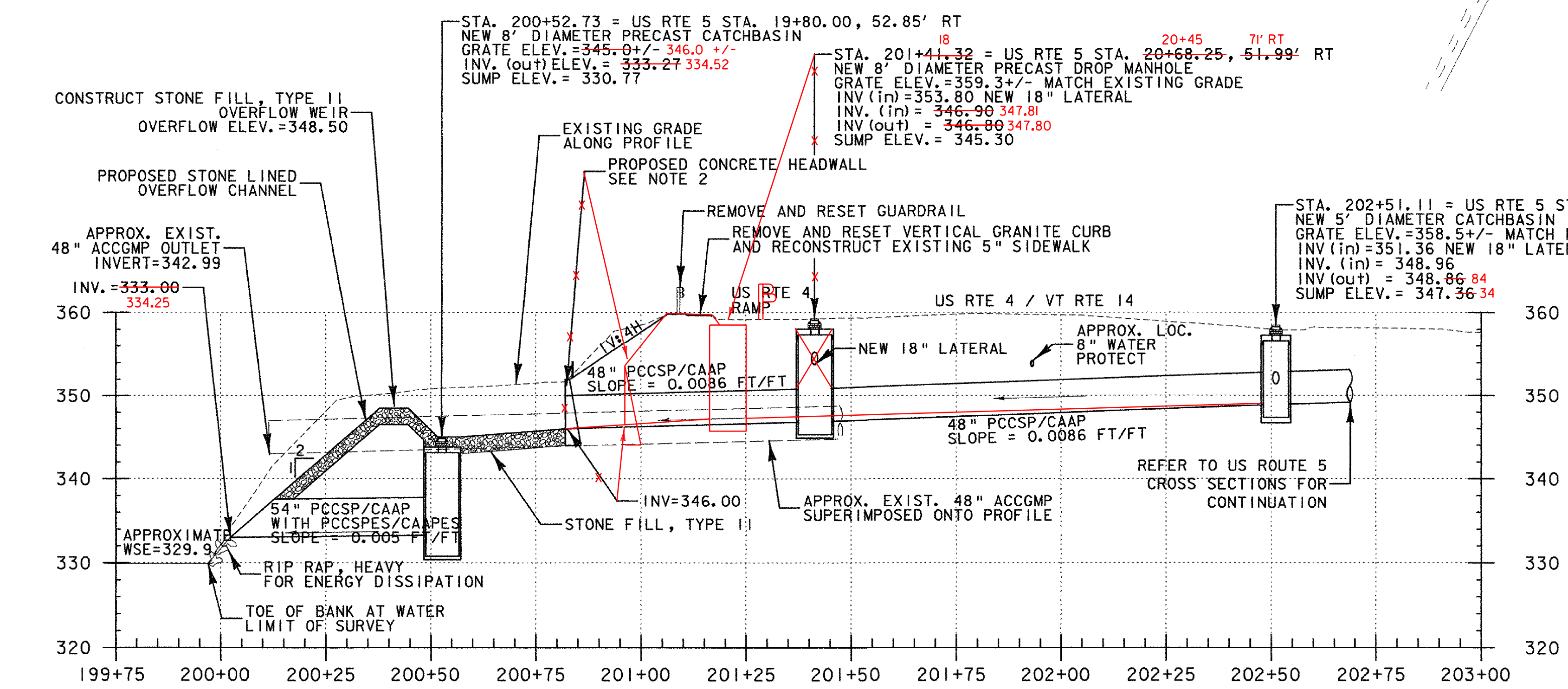
**DETAIL OF PROPOSED HEADWALL**  
NOT TO SCALE



**TYPICAL STONE LINED CHANNEL SECTION A-A**  
STATION 200+62 SHOWN



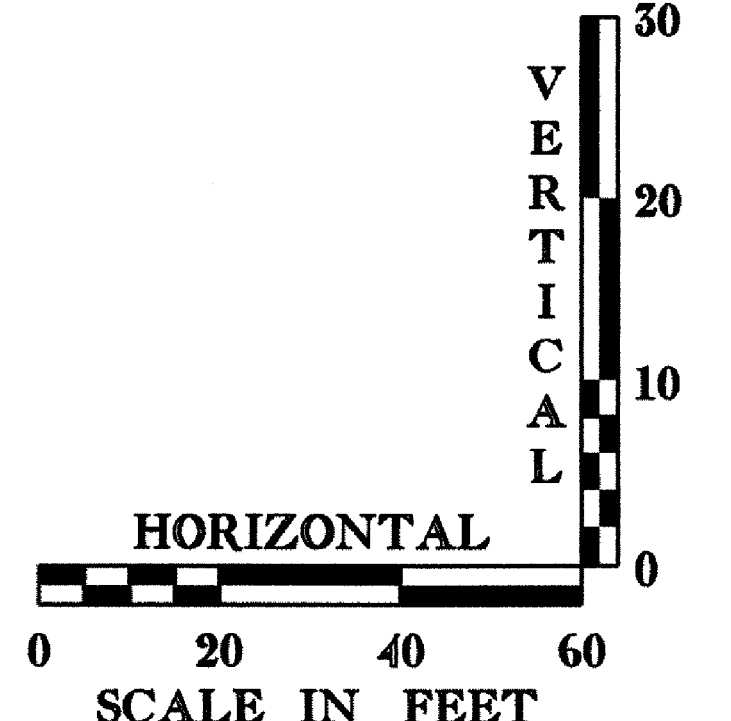
**STORMWATER OUTFALL DETAIL PLAN**



**STORMWATER TRUNKLINE PROFILE FROM**  
US ROUTE 5 STA. 21+76.10 RT ~ 19+30.54 RT = TRUNKLINE STA. 202+51.11 ~ 200+02.31

**DATUM**

VERTICAL	NGVD 1929
HORIZONTAL	N/A



**STORMWATER OUTFALL DETAILS, PLAN AND PROFILE**

PROJECT: <b>HARTFORD</b>	PROJECT NO. : <b>RS 0113(40)</b>
DESIGN FILE NAME: z86c027drndet.DGN	PLOT DATE: 1/13/2007
IPARM FILE NAME:	SURVEY DATE: 1/87
SURVEYED BY: FANTONI	DRAWN BY: E. ATKINS
SQUAD LEADER: KEN UPMAL	SHEET: 79 OF 239