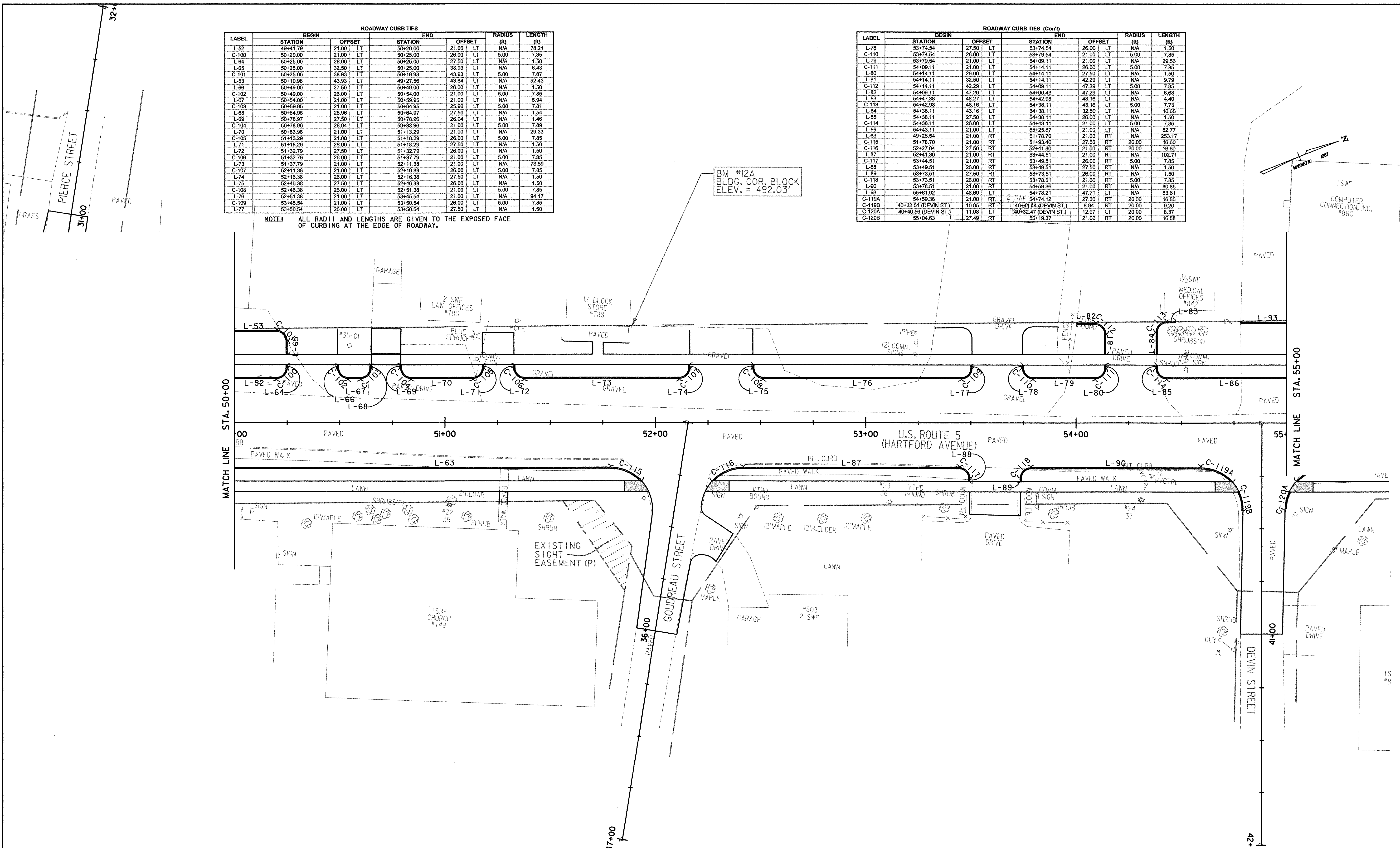


ROADWAY CURB TIES								
LABEL	STATION	BEGIN	OFFSET	STATION	END	OFFSET	RADIUS (ft)	LENGTH
L-52	49+41.79	21.00	LT	50+20.00	21.00	LT	N/A	78.21
C-100	50+20.00	21.00	LT	50+25.00	26.00	LT	5.00	7.85
L-64	50+25.00	26.00	LT	50+25.00	27.50	LT	N/A	1.50
L-65	50+25.00	32.50	LT	50+25.00	38.83	LT	N/A	6.43
C-101	50+25.00	38.93	LT	50+19.98	43.93	LT	5.00	7.87
L-53	50+19.98	43.93	LT	49+27.56	43.64	LT	N/A	32.43
L-66	50+49.00	27.50	LT	50+49.00	26.00	LT	N/A	1.50
C-102	50+49.00	26.00	LT	50+54.00	21.00	LT	5.00	7.85
L-67	50+54.00	21.00	LT	50+59.95	21.00	LT	N/A	5.94
C-103	50+59.95	21.00	LT	50+64.96	25.96	LT	5.00	7.81
L-68	50+64.96	25.96	LT	50+64.97	27.50	LT	N/A	1.54
L-69	50+78.97	27.50	LT	50+78.96	26.04	LT	N/A	1.46
C-104	50+78.96	26.04	LT	50+83.96	21.00	LT	5.00	7.89
L-70	50+83.96	21.00	LT	51+13.29	21.00	LT	N/A	29.33
C-105	51+13.29	21.00	LT	51+18.29	26.00	LT	5.00	7.85
L-71	51+18.29	26.00	LT	51+18.29	27.50	LT	N/A	1.50
L-72	51+32.79	27.50	LT	51+32.79	26.00	LT	N/A	1.50
C-106	51+32.79	26.00	LT	51+37.79	21.00	LT	5.00	7.85
L-73	51+37.79	21.00	LT	52+11.38	21.00	LT	N/A	73.59
C-107	52+11.38	21.00	LT	52+16.38	26.00	LT	5.00	7.85
L-74	52+16.38	26.00	LT	52+16.38	27.50	LT	N/A	1.50
L-75	52+46.38	27.50	LT	52+46.38	26.00	LT	N/A	1.50
C-108	52+46.38	26.00	LT	52+51.38	21.00	LT	5.00	7.85
L-76	52+51.38	21.00	LT	53+45.54	21.00	LT	N/A	94.17
C-109	53+45.54	21.00	LT	53+50.54	26.00	LT	5.00	7.85
L-77	53+50.54	26.00	LT	53+50.54	27.50	LT	N/A	1.50

ROADWAY CURB TIES (Cont)								
LABEL	STATION	BEGIN	OFFSET	STATION	END	OFFSET	RADIUS (ft)	LENGTH
L-78	53+74.54	27.50	LT	53+74.54	26.00	LT	N/A	1.50
C-110	53+74.54	26.00	LT	53+79.54	21.00	LT	5.00	7.85
L-79	53+79.54	21.00	LT	54+09.11	21.00	LT	N/A	29.56
C-111	54+09.11	21.00	LT	54+14.11	26.00	LT	5.00	7.85
L-80	54+14.11	26.00	LT	54+14.11	27.50	LT	N/A	1.50
L-81	54+14.11	32.50	LT	54+14.11	42.29	LT	N/A	9.79
C-112	54+14.11	42.29	LT	54+09.11	47.29	LT	5.00	7.85
L-82	54+09.11	47.29	LT	54+00.43	47.29	LT	N/A	8.68
L-83	54+47.38	48.27	LT	54+42.98	48.16	LT	N/A	4.40
C-113	54+42.98	48.16	LT	54+38.11	43.16	LT	5.00	7.73
L-84	54+38.11	43.16	LT	54+38.11	32.50	LT	N/A	10.66
L-85	54+38.11	27.50	LT	54+38.11	26.00	LT	N/A	1.50
C-114	54+38.11	26.00	LT	54+43.11	21.00	LT	5.00	7.85
L-86	54+43.11	21.00	LT	55+25.87	21.00	LT	N/A	82.77
L-83	54+25.87	21.00	RT	51+78.70	21.00	RT	N/A	253.17
C-115	51+78.70	21.00	RT	51+93.46	27.50	RT	20.00	16.60
C-116	52+27.04	27.50	RT	52+41.80	21.00	RT	20.00	16.60
L-87	52+41.80	21.00	RT	53+44.51	21.00	RT	N/A	102.71
C-117	53+44.51	21.00	RT	53+49.51	26.00	RT	5.00	7.85
L-88	53+49.51	26.00	RT	53+49.51	27.50	RT	N/A	1.50
L-89	53+73.51	27.50	RT	53+73.51	26.00	RT	N/A	1.50
C-118	53+73.51	26.00	RT	53+78.51	21.00	RT	5.00	7.85
L-90	53+78.51	21.00	RT	54+59.36	21.00	RT	N/A	80.85
L-83	53+59.36	21.00	RT	54+78.21	47.71	LT	N/A	83.61
C-119A	54+59.36	21.00	RT	54+74.12	27.50	RT	20.00	16.60
C-119B	40+32.51 (DEVIN ST.)	10.85	RT	40+41.44 (DEVIN ST.)	8.94	RT	20.00	9.20
C-120A	40+40.56 (DEVIN ST.)	11.08	LT	40+32.47 (DEVIN ST.)	12.97	LT	20.00	8.37
C-120B	55+04.63	27.49	RT	55+19.37	21.00	RT	20.00	16.58

NOTE: ALL RADII AND LENGTHS ARE GIVEN TO THE EXPOSED FACE OF CURBING AT THE EDGE OF ROADWAY.

BM #12A  
BLDG. COR. BLOCK  
ELEV. = 492.03'



DATUM	
VERTICAL	NGVD 1929
HORIZONTAL	N/A



PROJECT: HARTFORD	PROJECT NO. : RS 0113(40)
DESIGN FILE NAME: z86c027curbbdr.DGN	PLOT DATE: 1/13/2007
IPARM FILE NAME:	SURVEY DATE: 1/87
SURVEYED BY: FANTONI	DRAWN BY: E. ATKINS
SQUAD LEADER: KEN UPMAL	SHEET: 74 OF 239

CURB TIE LAYOUT SHEET 7