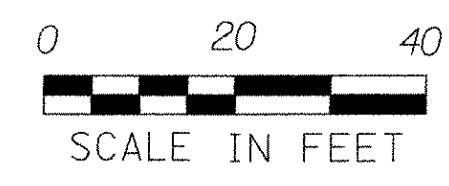
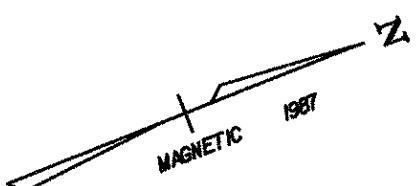
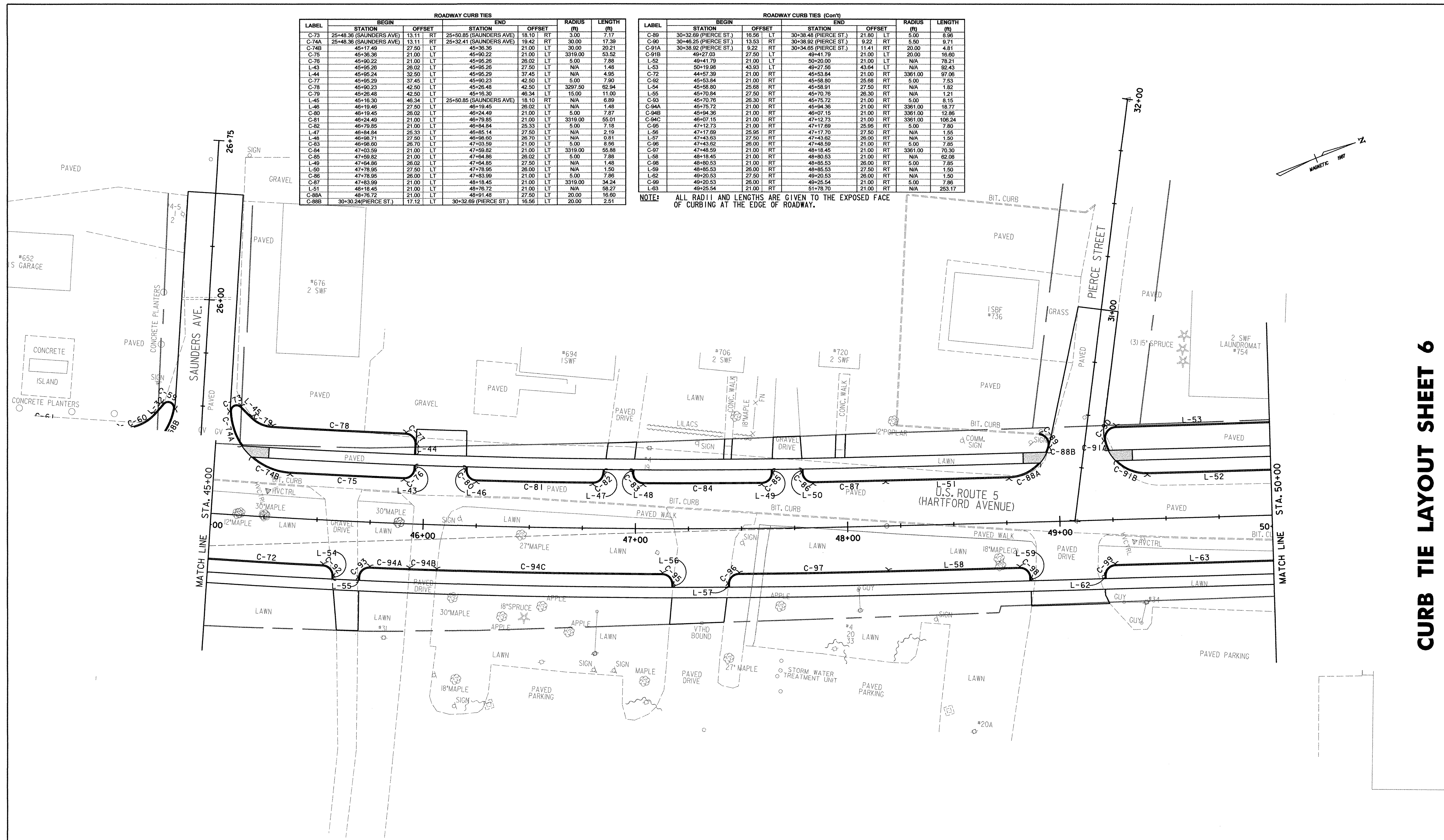


ROADWAY CURB TIES						
LABEL	STATION	BEGIN	END	OFFSET	RADIUS	LENGTH
C-75	25+48.36 (SAUNDERS AVE)	13.11 RT	25+50.85 (SAUNDERS AVE)	18.10 RT	3.00	7.17
C-74A	25+48.36 (SAUNDERS AVE)	13.11 RT	25+32.41 (SAUNDERS AVE)	19.42 RT	30.00	17.38
C-74B	45+17.49	27.50 LT	45+36.36	21.00 LT	30.00	20.21
C-75	45+36.36	21.00 LT	45+90.22	21.00 LT	3319.00	53.52
C-76	45+90.22	21.00 LT	45+95.26	26.02 LT	5.00	7.88
L-43	45+95.26	26.02 LT	45+95.26	27.50 LT	N/A	1.48
L-44	45+95.24	32.50 LT	45+95.29	37.45 LT	N/A	4.95
C-77	45+95.29	37.45 LT	45+90.23	42.50 LT	5.00	7.90
C-78	45+90.23	42.50 LT	45+26.48	42.50 LT	3297.50	62.94
C-79	45+26.48	42.50 LT	45+16.30	46.34 LT	15.00	11.00
L-45	45+16.30	46.34 LT	25+50.85 (SAUNDERS AVE)	18.10 RT	N/A	6.89
L-46	46+19.45	27.50 LT	46+19.45	26.02 LT	N/A	1.48
C-80	46+19.45	26.02 LT	46+24.49	21.00 LT	5.00	7.87
C-81	46+24.49	21.00 LT	46+79.85	21.00 LT	3319.00	55.01
C-82	46+79.85	21.00 LT	46+84.84	25.33 LT	5.00	7.18
L-47	46+84.84	25.33 LT	46+85.14	27.50 LT	N/A	2.19
L-48	46+98.71	27.50 LT	46+98.60	26.70 LT	N/A	0.81
C-83	46+98.60	26.70 LT	47+03.59	21.00 LT	5.00	8.96
C-84	47+03.59	21.00 LT	47+59.82	21.00 LT	3319.00	55.88
C-85	47+59.82	21.00 LT	47+64.86	26.02 LT	5.00	7.88
L-49	47+64.86	26.02 LT	47+64.85	27.50 LT	N/A	1.48
L-50	47+78.95	27.50 LT	47+78.95	26.00 LT	N/A	1.50
C-86	47+78.95	26.00 LT	47+83.99	21.00 LT	5.00	7.86
C-87	47+83.99	21.00 LT	48+18.45	21.00 LT	3319.00	34.24
L-51	48+18.45	21.00 LT	48+76.72	21.00 LT	N/A	58.27
C-88A	48+76.72	21.00 LT	48+91.48	27.50 LT	20.00	16.60
C-88B	30+32.69 (PIERCE ST.)	17.12 LT	30+32.69 (PIERCE ST.)	16.56 LT	20.00	2.51

ROADWAY CURB TIES (Con't)						
LABEL	STATION	BEGIN	END	OFFSET	RADIUS	LENGTH
C-89	30+32.69 (PIERCE ST.)	16.56 LT	30+38.48 (PIERCE ST.)	18.10 RT	5.00	8.96
C-90	30+46.25 (PIERCE ST.)	13.53 RT	30+38.92 (PIERCE ST.)	9.22 RT	5.60	9.71
C-91A	30+38.92 (PIERCE ST.)	9.22 RT	30+34.65 (PIERCE ST.)	11.41 RT	20.00	4.61
C-91B	49+27.03	27.50 LT	49+41.79	21.00 LT	20.00	16.60
L-52	49+41.79	21.00 LT	50+20.00	21.00 LT	N/A	78.21
L-53	50+19.98	43.93 LT	49+27.56	43.64 LT	N/A	92.43
C-72	44+57.39	21.00 RT	45+53.84	21.00 RT	3361.00	97.06
C-82	45+53.84	21.00 RT	45+58.80	25.68 RT	5.00	7.53
L-54	45+58.80	25.68 RT	45+58.91	27.50 RT	N/A	1.82
L-55	45+70.84	27.50 RT	45+70.76	26.30 RT	N/A	1.21
C-93	45+70.76	26.30 RT	45+75.72	21.00 RT	5.00	8.15
C-94A	45+75.72	21.00 RT	45+94.36	21.00 RT	3361.00	18.77
C-94B	45+94.36	21.00 RT	46+07.15	21.00 RT	3361.00	12.86
C-94C	46+07.15	21.00 RT	47+12.73	21.00 RT	3361.00	106.24
C-95	47+12.73	21.00 RT	47+17.69	25.95 RT	5.00	7.80
L-56	47+17.69	25.95 RT	47+17.70	27.50 RT	N/A	1.55
L-57	47+43.63	27.50 RT	47+43.62	26.00 RT	N/A	1.50
C-96	47+43.62	26.00 RT	47+48.59	21.00 RT	5.00	7.85
C-97	47+48.59	21.00 RT	48+18.45	21.00 RT	3361.00	70.30
L-58	48+18.45	21.00 RT	48+80.53	21.00 RT	N/A	62.08
C-98	48+80.53	21.00 RT	48+85.53	26.00 RT	5.00	7.85
L-59	48+85.53	26.00 RT	48+85.53	27.50 RT	N/A	1.50
L-62	49+20.53	27.50 RT	49+20.53	26.00 RT	N/A	1.50
C-99	49+20.53	26.00 RT	49+25.54	21.00 RT	5.00	7.86
L-63	49+25.54	21.00 RT	51+78.70	21.00 RT	N/A	253.17

NOTE: ALL RADIUS AND LENGTHS ARE GIVEN TO THE EXPOSED FACE OF CURBING AT THE EDGE OF ROADWAY.



DATUM
VERTICAL NGVD 1929
HORIZONTAL N/A

PROJECT: HARTFORD	PROJECT NO. : RS 0113(40)
DESIGN FILE NAME: z86c027curbbdr.DGN	PLOT DATE: 1/9/2007
IPARM FILE NAME:	SURVEY DATE: 1/87
SURVEYED BY: FANTONI	DRAWN BY: E. ATKINS
SQUAD LEADER: KEN UPMAL	SHEET: 73 OF 239

CURB TIE LAYOUT SHEET 6