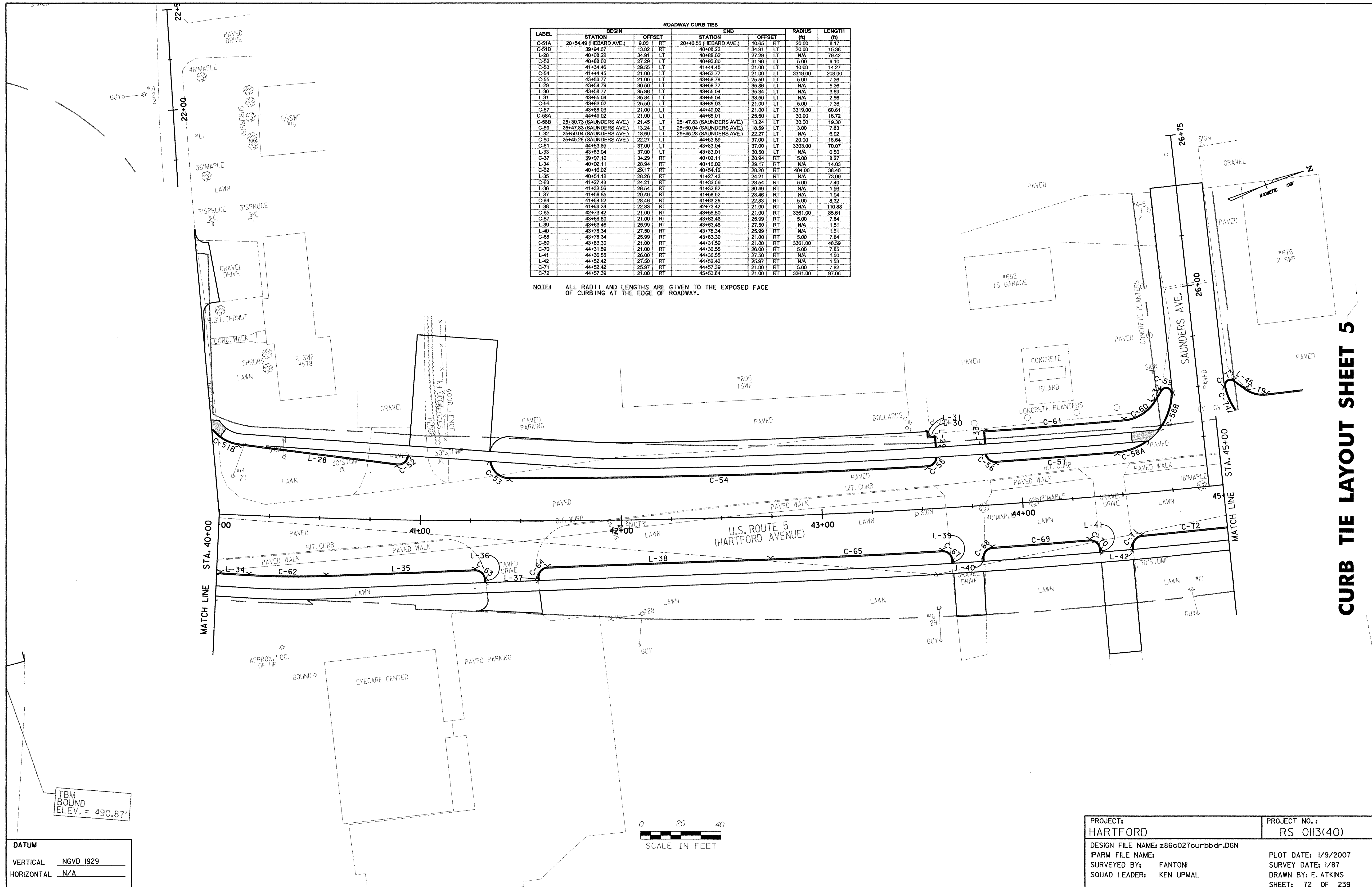


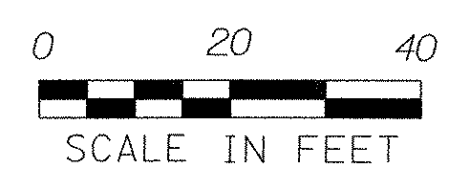
LABEL	BEGIN		END		RADIUS (ft)	LENGTH (ft)
	STATION	OFFSET	STATION	OFFSET		
C-51A	20+54.49 (HEBARD AVE)	9.00 RT	20+46.55 (HEBARD AVE)	10.65 RT	20.00	8.17
C-51B	39+94.67	13.82 RT	40+08.22	34.91 LT	20.00	15.38
L-28	40+08.22	34.91 LT	40+88.02	27.29 LT	N/A	79.42
C-52	40+88.02	27.29 LT	40+93.60	31.96 LT	5.00	8.10
C-53	41+34.46	29.55 LT	41+44.45	21.00 LT	10.00	14.27
C-54	41+44.45	21.00 LT	43+53.77	21.00 LT	3319.00	208.00
C-55	43+53.77	21.00 LT	43+58.78	25.50 LT	5.00	7.36
L-29	43+58.78	30.50 LT	43+58.77	35.86 LT	N/A	5.36
L-30	43+58.77	35.86 LT	43+55.04	35.54 LT	N/A	3.69
L-31	43+55.04	35.54 LT	43+55.04	38.50 LT	N/A	2.66
C-56	43+83.02	25.50 LT	43+88.03	21.00 LT	5.00	7.36
C-57	43+88.03	21.00 LT	44+49.02	21.00 LT	3319.00	60.61
C-58A	44+49.02	21.00 LT	44+65.01	25.50 LT	30.00	16.72
C-58B	25+30.73 (SAUNDERS AVE)	21.45 LT	25+47.83 (SAUNDERS AVE)	13.24 LT	30.00	19.30
C-59	25+47.83 (SAUNDERS AVE)	13.24 LT	25+50.04 (SAUNDERS AVE)	18.59 LT	3.00	7.83
L-32	25+50.04 (SAUNDERS AVE)	18.59 LT	25+45.28 (SAUNDERS AVE)	22.27 LT	N/A	6.02
C-60	25+45.28 (SAUNDERS AVE)	22.27 LT	44+53.89	37.00 LT	20.00	18.64
C-61	44+53.89	37.00 LT	43+83.04	37.00 LT	3365.00	70.07
L-33	43+83.04	37.00 LT	43+83.01	30.50 LT	N/A	6.50
C-37	39+97.10	34.29 RT	40+02.11	28.94 RT	5.00	8.27
L-34	40+02.11	28.94 RT	40+16.02	29.17 RT	N/A	14.03
C-62	40+16.02	29.17 RT	40+54.12	28.26 RT	404.00	38.46
L-35	40+54.12	28.26 RT	41+27.43	24.21 RT	N/A	73.99
C-63	41+27.43	24.21 RT	41+32.56	28.54 RT	5.00	7.40
L-36	41+32.56	28.54 RT	41+32.82	30.49 RT	N/A	1.96
L-37	41+58.65	29.49 RT	41+58.52	28.46 RT	N/A	1.04
C-64	41+58.52	28.46 RT	41+63.26	22.83 RT	5.00	8.32
L-38	41+63.26	22.83 RT	42+73.42	21.00 RT	N/A	110.88
C-65	42+73.42	21.00 RT	43+58.50	21.00 RT	3361.00	85.61
C-67	43+58.50	21.00 RT	43+63.46	25.99 RT	5.00	7.84
L-39	43+63.46	25.99 RT	43+63.46	27.50 RT	N/A	1.51
L-40	43+78.34	27.50 RT	43+78.34	25.99 RT	N/A	1.51
C-68	43+78.34	25.99 RT	43+63.30	21.00 RT	5.00	7.84
C-69	43+63.30	21.00 RT	44+31.59	21.00 RT	3361.00	48.59
C-70	44+31.59	21.00 RT	44+36.55	26.00 RT	5.00	7.85
L-41	44+36.55	26.00 RT	44+36.55	27.50 RT	N/A	1.50
L-42	44+52.42	27.50 RT	44+52.42	25.97 RT	N/A	1.53
C-71	44+52.42	25.97 RT	44+57.39	21.00 RT	5.00	7.82
C-72	44+57.39	21.00 RT	45+53.84	21.00 RT	3361.00	97.06

NOTE: ALL RADIUS AND LENGTHS ARE GIVEN TO THE EXPOSED FACE OF CURBING AT THE EDGE OF ROADWAY.



CURB TIE LAYOUT SHEET 5

DATUM
 VERTICAL NGVD 1929
 HORIZONTAL N/A



PROJECT: HARTFORD	PROJECT NO.: RS 0113(40)
DESIGN FILE NAME: z86c027curbbdr.DGN	PLOT DATE: 1/9/2007
IPARM FILE NAME:	SURVEY DATE: 1/87
SURVEYED BY: FANTONI	DRAWN BY: E. ATKINS
SQUAD LEADER: KEN UPMAL	SHEET: 72 OF 239

TBM BOUND ELEV. = 490.87'