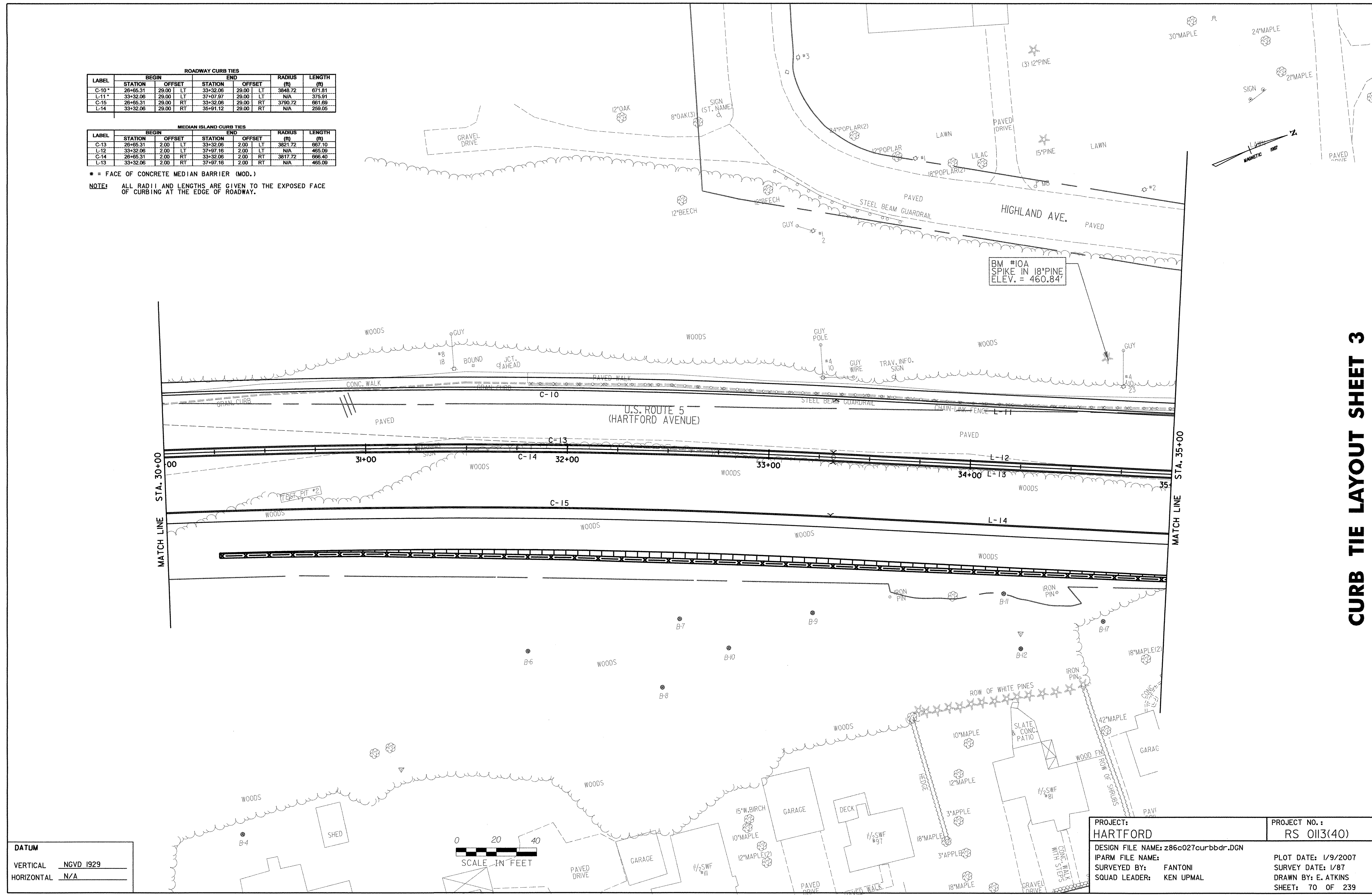


**CURB TIE LAYOUT SHEET 3**

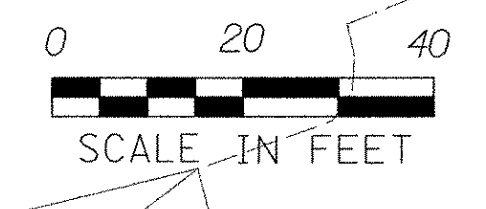
ROADWAY CURB TIES						
LABEL	BEGIN		END		RADIUS (ft)	LENGTH (ft)
	STATION	OFFSET	STATION	OFFSET		
C-10*	26+65.31	29.00 LT	33+32.06	29.00 LT	3848.72	671.81
L-11*	33+32.06	29.00 LT	37+07.97	29.00 LT	N/A	376.91
C-15	26+65.31	29.00 RT	33+32.06	29.00 RT	3790.72	661.69
L-14	33+32.06	29.00 RT	35+91.12	29.00 RT	N/A	258.05

MEDIAN ISLAND CURB TIES						
LABEL	BEGIN		END		RADIUS (ft)	LENGTH (ft)
	STATION	OFFSET	STATION	OFFSET		
C-13	26+65.31	2.00 LT	33+32.06	2.00 LT	3821.72	667.10
L-12	33+32.06	2.00 LT	37+07.16	2.00 LT	N/A	465.09
C-14	26+65.31	2.00 RT	33+32.06	2.00 RT	3817.72	666.40
L-13	33+32.06	2.00 RT	37+07.16	2.00 RT	N/A	465.09

\* = FACE OF CONCRETE MEDIAN BARRIER (MOD.)  
 NOTE: ALL RADII AND LENGTHS ARE GIVEN TO THE EXPOSED FACE OF CURBING AT THE EDGE OF ROADWAY.



DATUM  
 VERTICAL NGVD 1929  
 HORIZONTAL N/A



PROJECT: <b>HARTFORD</b>	PROJECT NO.: <b>RS 0113(40)</b>
DESIGN FILE NAME: z86c027curbldr.DGN	PLOT DATE: 1/9/2007
IPARM FILE NAME:	SURVEY DATE: 1/87
SURVEYED BY: FANTONI	DRAWN BY: E. ATKINS
SQUAD LEADER: KEN UPMAL	SHEET: 70 OF 239