

**REMOVE EXISTING SIDEWALK (COMMON EXCAVATION)**

55+02 ~ 57+13 RT  
57+49 ~ 57+99 RT  
58+24 ~ 60+00 RT

**SOLID ROCK EXCAVATION  
(REMOVAL OF EXISTING CONCRETE ROADWAY)**

55+26 ~ 55+00 ~ 60+00 - 7' x 22' WIDE 18"  
(EST. FROM 1931 REC. PLANS)

**COLD-PLANING BIT. PAVEMENT**

59+50 ~ 60+00 RT

**VERTICAL GRANITE CURB**

55+05 ~ 57+12 RT  
57+47 ~ 58+01 RT  
45+32 ~ 45+45 RT (ADVENT LN)  
45+45 ~ 45+34 LT (ADVENT LN)  
58+30 ~ 58+45 RT  
55+00 ~ 55+87 LT  
55+91 ~ 56+82 LT  
57+23 ~ 58+29 LT  
58+53 ~ 59+50 LT

**BITUMINOUS CONCRETE CURB, TYPE B**

55+00 ~ 55+67 LT  
55+91 ~ 56+61 LT  
56+75 ~ 56+83 LT  
57+23 ~ 57+33 LT

**REMOVING AND RESETTING CURB**

58+40 ~ 60+00 RT

**PORTLAND CEMENT CONCRETE SIDEWALK, 5 INCH (MOD.)**

55+00 ~ 55+62 LT  
55+96 ~ 56+83 LT  
55+02 ~ 57+07 RT  
57+52 ~ 58+05 RT  
58+27 ~ 60+00 RT

**PORTLAND CEMENT CONCRETE SIDEWALK, 8 INCH (MOD.)**

55+62 ~ 55+96 LT  
57+07 ~ 57+52 RT

**CONSTRUCT CONCRETE SIDEWALK RAMPS  
W/ DETECTABLE WARNING SURFACE**

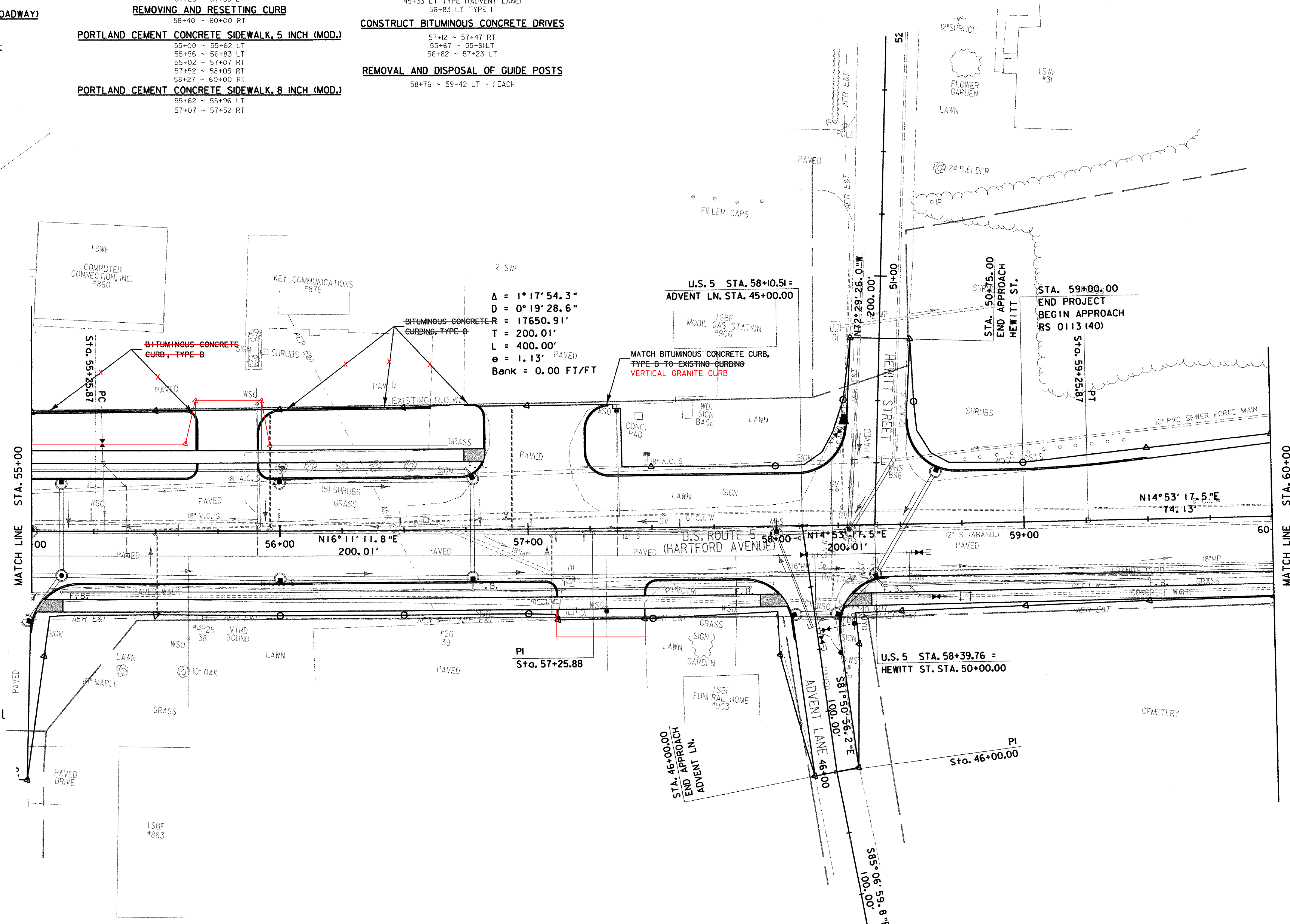
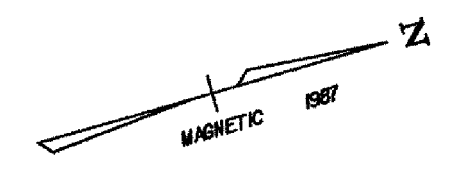
40+30 LT TYPE I (DEVIN STREET)  
45+28 RT TYPE I (ADVENT LANE)  
45+33 LT TYPE I (ADVENT LANE)  
56+83 LT TYPE I

**CONSTRUCT BITUMINOUS CONCRETE DRIVES**

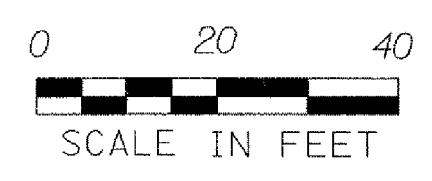
57+12 ~ 57+47 RT  
55+67 ~ 55+91 LT  
56+82 ~ 57+23 LT

**REMOVAL AND DISPOSAL OF GUIDE POSTS**

58+76 ~ 59+42 LT - 11 EACH



$\Delta = 1^\circ 17' 54.3''$   
 $D = 0^\circ 19' 28.6''$   
 $R = 17650.91'$   
 $T = 200.01'$   
 $L = 400.00'$   
 $e = 1.13'$  PAVED  
 Bank = 0.00 FT/FT



**DATUM**

VERTICAL	NGVD 1929
HORIZONTAL	N/A

- NOTES:**
- REFER TO CURB LAYOUT SHEETS FOR CURBING LAYOUT AND DIMENSIONS.
  - REFER TO DRAIN, SEWER, AND WATER LAYOUT SHEETS FOR UTILITY LAYOUT.

PROJECT: <b>HARTFORD</b>	PROJECT NO. : RS 0113(40)
DESIGN FILE NAME: z027bdr.dgn	PLOT DATE: 1/13/2007
IPARM FILE NAME:	SURVEY DATE: 1/87
SURVEYED BY: FANTONI	DRAWN BY: E. ATKINS
SQUAD LEADER: KEN UPMAL	SHEET: 51 OF 239

**ROADWAY LAYOUT SHEET 8**