

REMOVE EXISTING SIDEWALK (COMMON EXCAVATION)

50+00 ~ 51+93 RT
52+35 ~ 53+50 RT
53+73 ~ 54+72 RT

**SOLID ROCK EXCAVATION
(REMOVAL OF EXISTING CONCRETE ROADWAY)**

50+00 ~ 55+00 = 7' x 22' WIDE 18'
(EST. FROM 1931 REC. PLANS)

EXCAVATION OF SURFACES AND PAVEMENT

50+79 LT ~ 51+11 LT

VERTICAL GRANITE CURB

50+00 ~ 51+93 RT 50+00 ~ 50+25 LT

52+27 ~ 53+50 RT
53+74 ~ 54+74 RT
40+33 ~ 40+41 RT (DEVIN ST)
40+32 ~ 40+41 LT (DEVIN ST)
50+00 ~ 50+25 LT
50+49 ~ 50+65 LT
50+79 ~ 51+18 LT
51+33 ~ 52+16 LT 35
65 52+46 ~ 53+51 LT
53+75 ~ 54+14 LT
54+38 ~ 55+00 LT 54+78

BITUMINOUS CONCRETE CURB, TYPE B

50+00 ~ 50+25 LT
54+00 ~ 54+14 LT
54+30 ~ 54+47 LT
54+78 ~ 55+00 LT

PORTLAND CEMENT CONCRETE SIDEWALK, 5 INCH (MOD.)

50+00 ~ 50+20 LT
50+54 ~ 50+60 LT
50+84 ~ 51+13 LT
50+00 ~ 51+96 RT
51+38 ~ 52+11 LT 35
52+24 ~ 53+45 RT
65 52+41 ~ 53+46 LT
53+80 ~ 54+09 LT
53+79 ~ 54+77 RT
54+43 ~ 55+00 LT 54+78 LT
51+28 RT (PRIVATE - 4' WIDE x 6' LONG)
51+73 LT (PRIVATE - 5' WIDE x 5' LONG)

PORTLAND CEMENT CONCRETE SIDEWALK, 8 INCH (MOD.)

50+20 ~ 50+54 LT
50+60 ~ 50+84 LT
51+13 ~ 51+38 LT
35 52+11 ~ 52+41 LT 65
53+46 ~ 53+80 LT
53+45 ~ 53+79 RT
54+09 ~ 54+43 LT

**CONSTRUCT CONCRETE SIDEWALK RAMP
W/ DETECTABLE WARNING SURFACE**

35+33 RT TYPE I (GOUDREAU ST)
35+28 LT TYPE I (GOUDREAU ST)
40+30 RT TYPE I (DEVIN ST)

CONSTRUCT BITUMINOUS CONCRETE DRIVES

50+25 ~ 50+49 LT
50+65 ~ 50+79 LT
51+18 ~ 51+33 LT
52+16 ~ 52+46 LT 52+35 ~ 52+65 LT
53+51 ~ 53+75 LT
53+50 ~ 53+74 RT
54+14 ~ 54+38 LT
54+77 ~ 54+94 RT

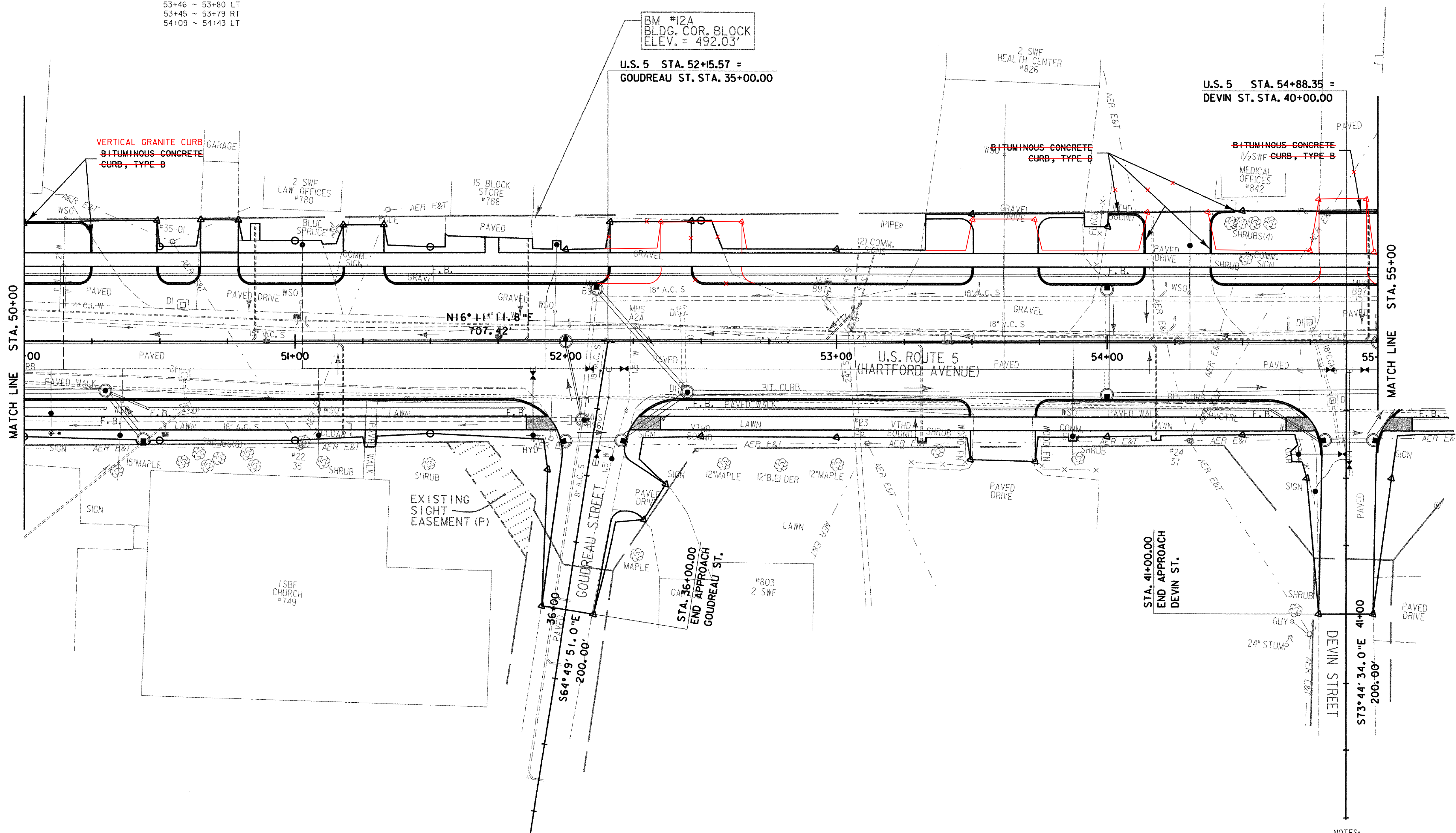
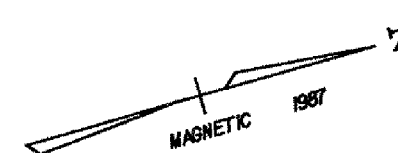
REMOVING AND RESETTING PROPERTY MARKERS

53+25 RT

54+00 LT

REMOVAL OF EXISTING FENCE

53+96 ~ 53+98 LT (20' TO R.O.W.)



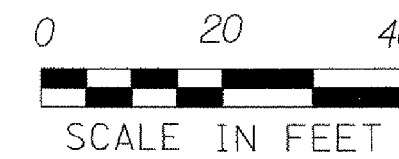
BM #12A
BLDG. COR. BLOCK
ELEV. = 492.03'

U.S. 5 STA. 52+15.57 =
GOUDREAU ST. STA. 35+00.00

U.S. 5 STA. 54+88.35 =
DEVIN ST. STA. 40+00.00

MATCH LINE STA. 50+00

MATCH LINE STA. 55+00



DATUM	
VERTICAL	NGVD 1929
HORIZONTAL	N/A

- NOTES:
- REFER TO CURB LAYOUT SHEETS FOR CURBING LAYOUT AND DIMENSIONS.
 - REFER TO DRAIN, SEWER, AND WATER LAYOUT SHEETS FOR UTILITY LAYOUT.

PROJECT: HARTFORD	PROJECT NO. : RS 0113(40)
DESIGN FILE NAME: z027bdr.dgn	PLOT DATE: 1/11/2007
IPARM FILE NAME:	SURVEY DATE: 1/87
SURVEYED BY: FANTONI	DRAWN BY: E. ATKINS
SQUAD LEADER: KEN UPMAL	SHEET: 50 OF 239

ROADWAY LAYOUT SHEET 7