

**CLEARING AND GRUBBING
(INCLUDING INDIVIDUAL TREES AND STUMPS)**

45+12 LT(S)
45+25 LT (M)
45+89 LT (M)
46+46 RT (M)
47+27 RT (L)
47+31 RT (L)
48+71 RT (2) (M)

REMOVE EXISTING SIDEWALK (COMMON EXCAVATION)

45+00 ~ 45+53 LT
45+59 ~ 45+95 LT
46+11 ~ 47+36 LT
47+65 ~ 48+40 LT
48+40 ~ 48+88 RT
49+18 ~ 50+00 RT

**SOLID ROCK EXCAVATION
(REMOVAL OF EXISTING CONCRETE ROADWAY)**

45+00 ~ 50+00 - 7' x 22' WIDE 18"
(EST. FROM 1931 REC. PLANS)

**VERTICAL GRANITE CURB
GRANITE SLOPE EDGING**

45+94 ~ 46+07 RT
(2" REVEAL)
VERTICAL GRANITE CURB

45+00 ~ 45+59 RT
45+71 ~ 45+94 RT
46+07 ~ 47+18 RT
47+44 ~ 48+86 RT
49+21 ~ 50+00 RT
25+48 ~ 25+32 RT (SAUNDERS AVE)
45+17 ~ 45+95 LT
46+19 ~ 46+85 LT
46+99 ~ 47+65 LT
47+79 ~ 48+91 LT
30+30 ~ 30+38 LT (PIERCE ST)
49+27 ~ 50+00 LT

**VERTICAL GRANITE CURB
BITUMINOUS CONCRETE CURB, TYPE B**

25+48 RT (SAUNDERS AVE) ~ 45+95 LT
30+35 RT (PIERCE ST) ~ 50+00 LT

PORTLAND CEMENT CONCRETE SIDEWALK, 5 INCH (MOD.)

45+13 ~ 45+90 LT
46+24 ~ 46+80 LT
47+04 ~ 48+95 LT
49+24 ~ 50+00 LT
45+00 ~ 45+54 RT
45+76 ~ 47+13 RT 45+94 RT
47+49 ~ 48+81 RT 46+07 ~ 47+13 RT
49+26 ~ 50+00 RT
47+43 LT (PRIVATE - 3.5' WIDE x 10' LONG)
47+96 LT (PRIVATE - 4.5' WIDE x 11' LONG)

PORTLAND CEMENT CONCRETE SIDEWALK, 8 INCH (MOD.)

45+54 ~ 45+76 RT
47+13 ~ 47+49 RT
48+81 ~ 49+26 RT
45+90 ~ 46+24 LT
46+80 ~ 47+04 LT
47+60 ~ 47+84 LT
45+94 ~ 46+07 RT

**CONSTRUCT CONCRETE SIDEWALK RAMPS
W/ DETECTABLE WARNING SURFACE**

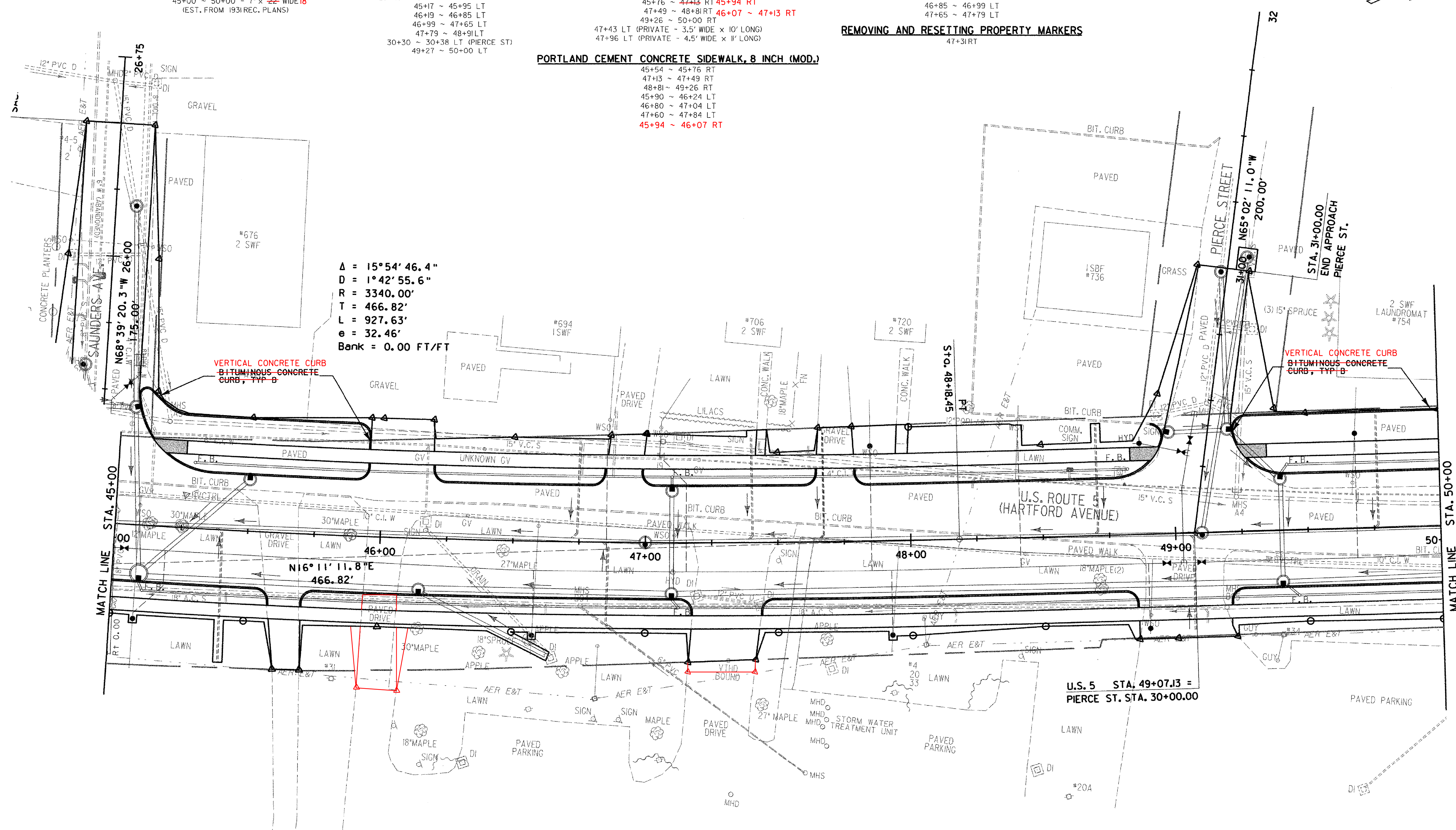
25+30 RT TYPE I (SAUNDERS AVE)
30+27 LT TYPE I (PIERCE ST)
30+33 RT TYPE I (PIERCE ST)

CONSTRUCT BITUMINOUS CONCRETE DRIVES

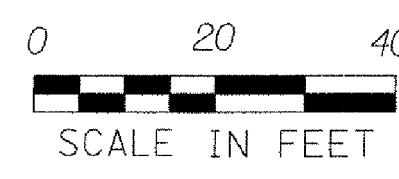
45+59 ~ 45+71 RT
47+18 ~ 47+44 RT
48+86 ~ 49+21 RT
45+95 ~ 46+19 LT
46+85 ~ 46+99 LT
47+65 ~ 47+79 LT

REMOVING AND RESETTING PROPERTY MARKERS

47+31 RT



$\Delta = 15^\circ 54' 46.4''$
 $D = 1^\circ 42' 55.6''$
 $R = 3340.00'$
 $T = 466.82'$
 $L = 927.63'$
 $e = 32.46'$
Bank = 0.00 FT/FT



DATUM
VERTICAL NGVD 1929
HORIZONTAL N/A

- NOTES:**
- REFER TO CURB LAYOUT SHEETS FOR CURBING LAYOUT AND DIMENSIONS.
 - REFER TO DRAIN, SEWER, AND WATER LAYOUT SHEETS FOR UTILITY LAYOUT.

PROJECT: HARTFORD	PROJECT NO. : RS 0113(40)
DESIGN FILE NAME: z027bdr.dgn	PLOT DATE: 1/13/2007
IPARM FILE NAME:	SURVEY DATE: 1/87
SURVEYED BY: FANTONI	DRAWN BY: E. ATKINS
SQUAD LEADER: KEN UPMAL	SHEET: 49 OF 239

ROADWAY LAYOUT SHEET 6