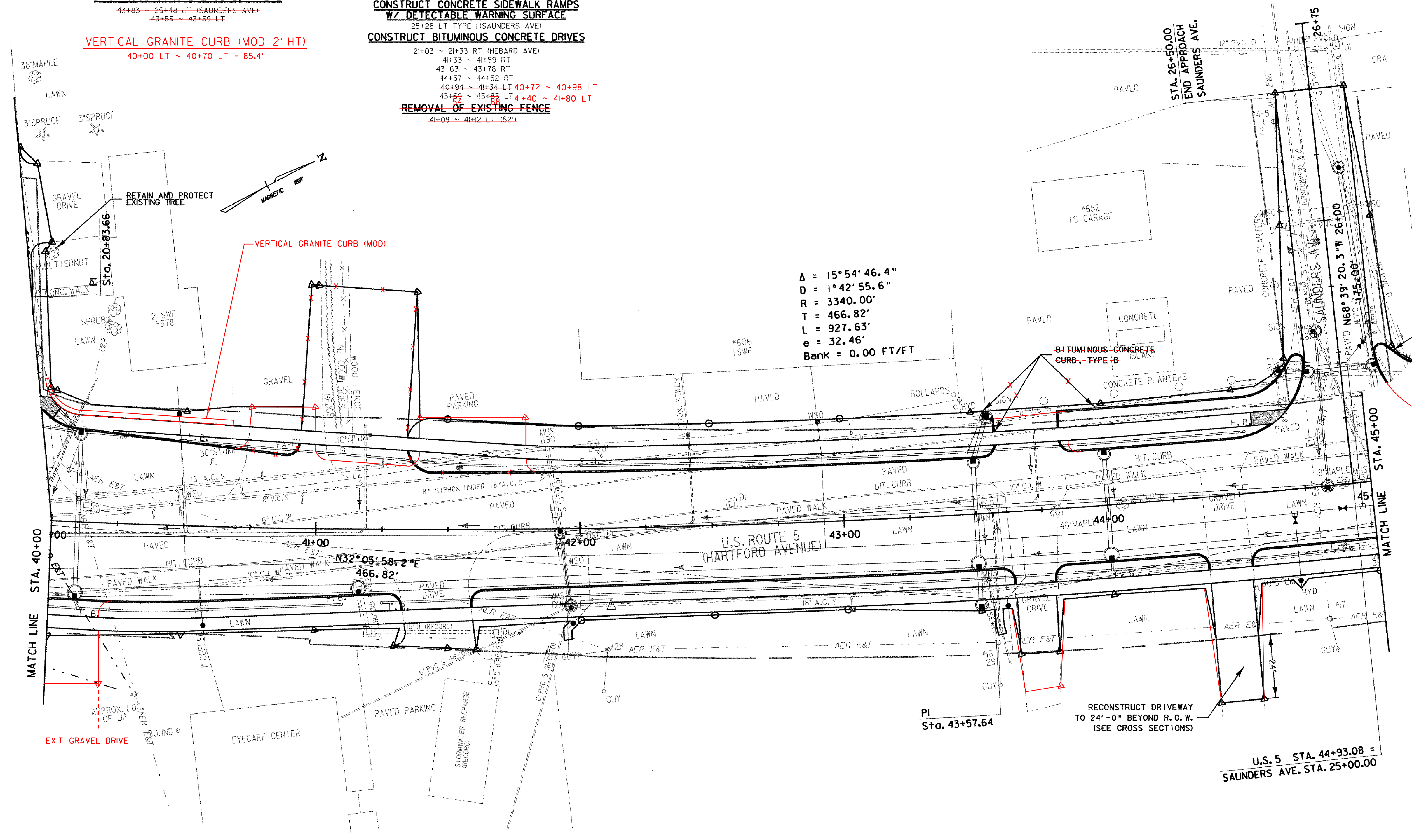


- CLEARING AND GRUBBING
(INCLUDING INDIVIDUAL TREES AND STUMPS)**
- 40+60 LT (M)
 - 41+00 LT (M)
 - 43+81 RT (L)
 - 44+06 RT (M)
 - 44+53 RT (M)
 - 44+89 LT (M)
- REMOVE EXISTING SIDEWALK (COMMON EXCAVATION)**
- 40+00 ~ 41+25 RT
 - 41+62 ~ 42+48 RT
 - 41+96 ~ 43+62 LT
 - 43+85 ~ 44+35 LT
 - 44+52 ~ 45+00 LT
- SOLID ROCK EXCAVATION
(REMOVAL OF EXISTING CONCRETE ROADWAY)**
- 40+00 ~ 45+00 - 7' x 22' WIDE 18'
(EST. FROM 1931 REC. PLANS)
- VERTICAL GRANITE CURB**
- 40+00 ~ 41+33 RT
 - 41+59 ~ 43+63 RT
 - 43+78 ~ 44+37 RT
 - 44+52 ~ 45+00 RT
 - 40+00 ~ 40+94 LT 62
 - 41+34 ~ 43+59 LT 40+86 ~ 41+33 LT
 - 43+83 ~ 44+65 LT 41+73 ~ 43+63 LT
 - 25+31 ~ 25+48 LT (SAUNDERS AVE)
- BITUMINOUS CONCRETE CURB, TYPE B**
- 43+83 ~ 25+48 LT (SAUNDERS AVE)
 - 43+58 ~ 43+59 LT
- VERTICAL GRANITE CURB (MOD 2' HT)**
- 40+00 LT ~ 40+70 LT - 85.4'

- PORTLAND CEMENT CONCRETE SIDEWALK, 5 INCH (MOD.)**
- 40+02 ~ 41+28 RT
 - 41+64 ~ 43+58 RT
 - 43+83 ~ 44+32 RT
 - 44+57 ~ 45+00 RT
 - 40+00 ~ 40+99 LT 62
 - 41+39 ~ 43+54 LT 41+73 ~ 43+54 LT
 - 43+88 ~ 44+71 LT
- PORTLAND CEMENT CONCRETE SIDEWALK, 8 INCH (MOD.)**
- 40+00 ~ 40+02 RT
 - 41+28 ~ 41+64 RT
 - 43+58 ~ 43+83 RT
 - 44+32 ~ 44+57 RT
 - 40+89 ~ 41+39 LT 40+62 ~ 40+86 LT
 - 43+54 ~ 43+88 LT 41+33 ~ 41+73 LT
- CONSTRUCT CONCRETE SIDEWALK RAMP
W/ DETECTABLE WARNING SURFACE**
- 25+28 LT TYPE 1 (SAUNDERS AVE)
- CONSTRUCT BITUMINOUS CONCRETE DRIVES**
- 21+03 ~ 21+33 RT (HEBARD AVE)
 - 41+33 ~ 41+59 RT
 - 43+63 ~ 43+78 RT
 - 44+37 ~ 44+52 RT
 - 40+84 ~ 41+34 LT 40+72 ~ 40+98 LT
 - 43+59 ~ 43+83 LT 41+40 ~ 41+80 LT
- REMOVAL OF EXISTING FENCE**
- 41+09 ~ 41+12 LT (S2)



DATUM	
VERTICAL	NGVD 1929
HORIZONTAL	N/A



- NOTES:
- 1) REFER TO CURB LAYOUT SHEETS FOR CURBING LAYOUT AND DIMENSIONS.
 - 2) REFER TO DRAIN, SEWER, AND WATER LAYOUT SHEETS FOR UTILITY LAYOUT.

PROJECT: HARTFORD	PROJECT NO. : RS 0113(40)
DESIGN FILE NAME: z027bdr.dgn	PLOT DATE: 1/11/2007
IPARM FILE NAME:	SURVEY DATE: 1/87
SURVEYED BY: FANTONI	DRAWN BY: E. ATKINS
SQUAD LEADER: KEN UPMAL	SHEET: 48 OF 239