

REMOVE EXISTING SIDEWALK (COMMON EXCAVATION)

- 50+00 ~ 51+93 RT
- 52+35 ~ 53+50 RT
- 53+73 ~ 54+72 RT
- EXISTING DRAINAGE**
- 52 49+70 RT ~ 50+44 RT
- EXISTING PIPE - RETAIN
- 53 50+44 RT ~ 50+58 RT
- EXISTING PIPE & DI - REMOVE
- 54 50+58 LT
- EXISTING DI - REMOVE
- EXISTING PIPE - PLUG
- 55 50+59 RT
- EXISTING DI - REMOVE
- EXISTING PIPE - PLUG
- 56 52+44 RT ~ 52+46 LT
- EXISTING PIPE & DI - REMOVE
- 57 54+75 LT ~ 54+83 RT
- EXISTING PIPE & DI - REMOVE
- 58 54+83 RT ~ 40+40 RT (DEVIN ST.)
- EXISTING PIPE & DI - REMOVE
- EXISTING PIPE - PLUG

NEW DRAINAGE

- 71 49+40 RT ~ 50+30 RT
- NEW 18"x88" RCP/CPEP (SL)
- W/JB @ 50+30 RT
- 72 50+44 RT ~ 50+30 RT
- NEW 18"x21" RCP/CPEP (SL)
- W/DI @ 50+44 RT
- 73 35+38J RT ~ 35+34.5 LT (GOUDREAU ST)
- NEW 18"x21" RCP/CPEP (SL)
- W/DI @ 35+38J
- 74 35+34.5 LT (GOUDREAU ST) ~ 52+45 RT
- NEW 18"x26" RCP/CPEP (SL)
- W/DI @ 35+34.5 LT
- 75 52+45 RT ~ 52+45 RT
- NEW 18"x48" RCP/CPEP (SL)
- W/DI @ 52+45 RT AND JB @ 52+45 RT

NEW DRAINAGE (CONT.)

- 76 52+45 RT ~ 54+00 RT
- NEW 18"x153" RCP/CPEP (SL)
- W/DI @ 54+00 RT
- 77 54+00 LT ~ 54+00 RT
- NEW 18"x38" RCP/CPEP (SL)
- W/DI @ 54+00 LT
- 78 54+00 RT ~ 55+12 RT
- NEW 18"x10" RCP/CPEP (SL)
- W/JB @ 55+12 RT
- 79 40+36.06 RT ~ 40+36.06 LT (DEVIN ST)
- NEW 18"x18" RCP/CPEP (SL)
- W/DI @ 40+36.06 RT
- 80 40+36.06 LT (DEVIN ST) ~ 55+12 RT
- NEW 18"x20" RCP/CPEP (SL)
- W/DI @ 40+36.06 LT

CHANGING ELEVATION OF SEWER MANHOLE

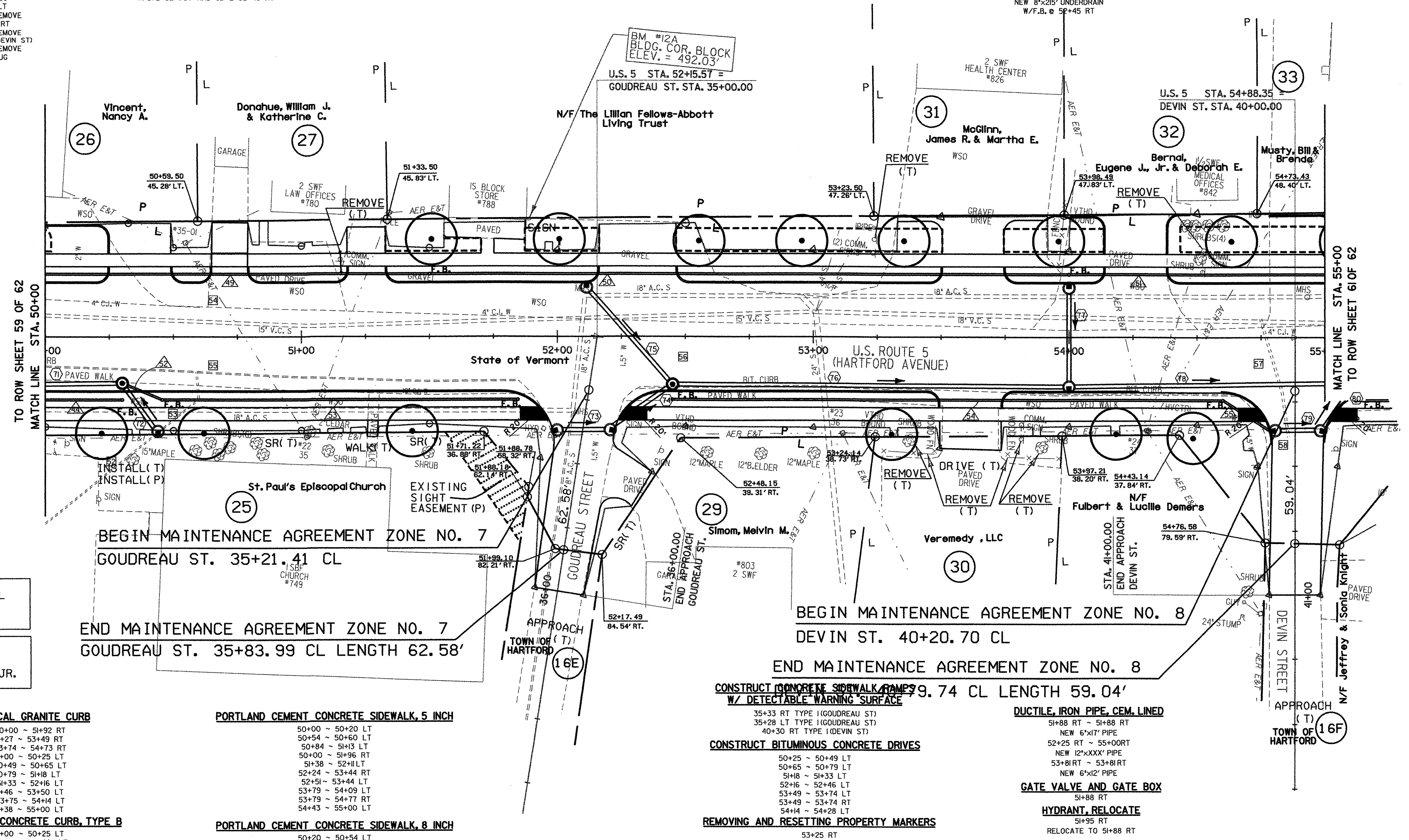
- 35+30 RT (GOUDREAU ST)
- 52+11T
- 52+96 LT
- 53+02 LT
- 54+93 LT

8" UNDERDRAIN

- 44 47+42 RT ~ 50+30 RT
- NEW 8"x318" UNDERDRAIN
- W/F.B. @ 50+30 RT
- 49 49+43 LT ~ 51+50 LT
- NEW 8"x207" UNDERDRAIN
- W/F.B. @ 51+50 LT
- 50 51+50 LT ~ 54+00 LT
- NEW 8"x250" UNDERDRAIN
- W/F.B. @ 54+00 LT
- 51 54+00 LT ~ 56+75 LT
- NEW 8"x275" UNDERDRAIN
- W/F.B. @ 56+75 LT
- 52 50+45 RT ~ 51+85 RT
- NEW 8"x140" UNDERDRAIN
- W/F.B. @ 51+85 RT
- 53 52+45 RT ~ 54+60 RT
- NEW 8"x215" UNDERDRAIN
- W/F.B. @ 54+60 RT

8" UNDERDRAIN CARRIER PIPE

- 52 50+30 RT ~ 50+45 RT
- NEW 8"x15" UNDERDRAIN CARRIER PIPE
- W/F.B. @ 50+45 RT
- 53 54+60 RT ~ 40+36.06 (DEVIN ST.)
- NEW 8"x22" UNDERDRAIN CARRIER PIPE
- W/F.B. @ 54+60 RT



FOR EROSION CONTROL DETAIL
SEE ROW SHEET 33 OF 62

RIGHT-OF-WAY AGENT OF
PROJECT: FRANK J. MALNATI JR.

VERTICAL GRANITE CURB

- 50+00 ~ 51+92 RT
- 52+27 ~ 53+49 RT
- 53+74 ~ 54+73 RT
- 50+00 ~ 50+25 LT
- 50+49 ~ 50+65 LT
- 50+79 ~ 51+18 LT
- 51+33 ~ 52+16 LT
- 52+46 ~ 53+50 LT
- 53+75 ~ 54+14 LT
- 54+38 ~ 55+00 LT

BITUMINOUS CONCRETE CURB, TYPE B

- 50+00 ~ 50+25 LT
- 54+38 ~ 54+44 LT
- 54+78 ~ 55+00 LT

PORTLAND CEMENT CONCRETE SIDEWALK, 5 INCH

- 50+00 ~ 50+20 LT
- 50+54 ~ 50+60 LT
- 50+84 ~ 51+13 LT
- 50+00 ~ 51+96 RT
- 51+38 ~ 52+11T
- 52+24 ~ 53+44 RT
- 52+51 ~ 53+44 LT
- 53+79 ~ 54+09 LT
- 53+79 ~ 54+77 RT
- 54+43 ~ 55+00 LT

PORTLAND CEMENT CONCRETE SIDEWALK, 8 INCH

- 50+20 ~ 50+54 LT
- 50+60 ~ 50+84 LT
- 51+13 ~ 51+38 LT
- 52+11 ~ 52+51 LT
- 53+44 ~ 53+79 LT
- 53+44 ~ 53+79 RT
- 54+09 ~ 54+43 LT

**CONSTRUCT CONCRETE SIDEWALK RAMP
W/ DETECTABLE WARNING SURFACE**

- 35+33 RT TYPE I (GOUDREAU ST)
- 35+28 LT TYPE I (GOUDREAU ST)
- 40+30 RT TYPE I (DEVIN ST)

CONSTRUCT BITUMINOUS CONCRETE DRIVES

- 50+25 ~ 50+49 LT
- 50+65 ~ 50+79 LT
- 51+18 ~ 51+33 LT
- 52+16 ~ 52+46 LT
- 53+49 ~ 53+74 LT
- 53+49 ~ 53+74 RT
- 54+14 ~ 54+28 LT

REMOVING AND RESETTING PROPERTY MARKERS

- 53+25 RT
- 54+00 LT
- 50+36 RT
- 51+02 LT
- 51+09 RT
- 51+96 LT
- 52+22 RT
- 53+87 RT
- 54+30 LT
- 54+71 LT

ADJUST ELEVATION OF VALVE BOX

LINES SHOWN ON THIS PLAN AS EXISTING
PROPERTY LINES P/L ARE BELIEVED TO BE
ACCURATE BUT SHOULD NOT BE RELIED
UPON FOR PURPOSES UNRELATED TO THE
STATE OF VERMONT'S ACQUISITION OF LAND
AND RIGHTS FOR THIS PROJECT.

DUCTILE, IRON PIPE, CEM. LINED

- 51+88 RT ~ 51+88 RT
- NEW 6"x17" PIPE
- 52+25 RT ~ 55+00 RT
- NEW 12"xXXX" PIPE
- 53+81 RT ~ 53+81 RT
- NEW 6"x12" PIPE

GATE VALVE AND GATE BOX

- 51+88 RT

HYDRANT, RELOCATE

- 51+95 RT
- RELOCATE TO 51+88 RT

FOR LANDSCAPE DETAIL
SEE ROW SHEET 42 OF 62

DATUM	
VERTICAL	NGVD 1929
HORIZONTAL	N/A

PROJECT: HARTFORD	PROJECT NO. : RS 0113(40)
DESIGN FILE NAME: z027bdr.dgn	PLOT DATE: 04-DEC-2006
IPARM FILE NAME:	SURVEY DATE: 1/87
SURVEYED BY: FANTONI	DRAWN BY: E. ATKINS
SQUAD LEADER: KEN UPMAL	SHEET 41 OF 239
ROW SHEET 60 OF 62	