

**REMOVE EXISTING SIDEWALK (COMMON EXCAVATION)**

- 45+00 ~ 45+53 LT
- 45+69 ~ 45+95 LT
- 46+11 ~ 47+36 LT
- 47+65 ~ 48+40 LT
- 48+40 ~ 48+88 RT
- 49+18 ~ 50+00 RT

**EXISTING DRAINAGE**

- 44 26+19.2 RT ~ 25+40 RT (SAUNDERS AVE) EXISTING PIPE - REMOVE
- 45 46+17 LT ~ 46+65.2 RT EXISTING DI(LT) - REMOVE
- 46 EXISTING DI(RT) - RETAIN EXISTING PIPE - PLUG
- 47 47+12 LT EXISTING DI - REMOVE EXISTING PIPE - PLUG
- 48 48+79 LT EXISTING DI - REMOVE EXISTING PIPE - PLUG
- 48 30+43 LT ~ 30+48 LT (PIERCE ST.) EXISTING DI - REMOVE EXISTING PIPE - PLUG
- 49 30+48 LT ~ 30+98.5 LT (PIERCE ST.) EXISTING PIPE & DMH - REMOVE
- 50 30+48 LT ~ SEWER (PIERCE ST) EXISTING PIPE - REMOVE AND PLUG AT SEWER
- 51 30+76 LT ~ 30+76 RT (PIERCE ST) EXISTING PIPE & DI - REMOVE

**NEW DRAINAGE**

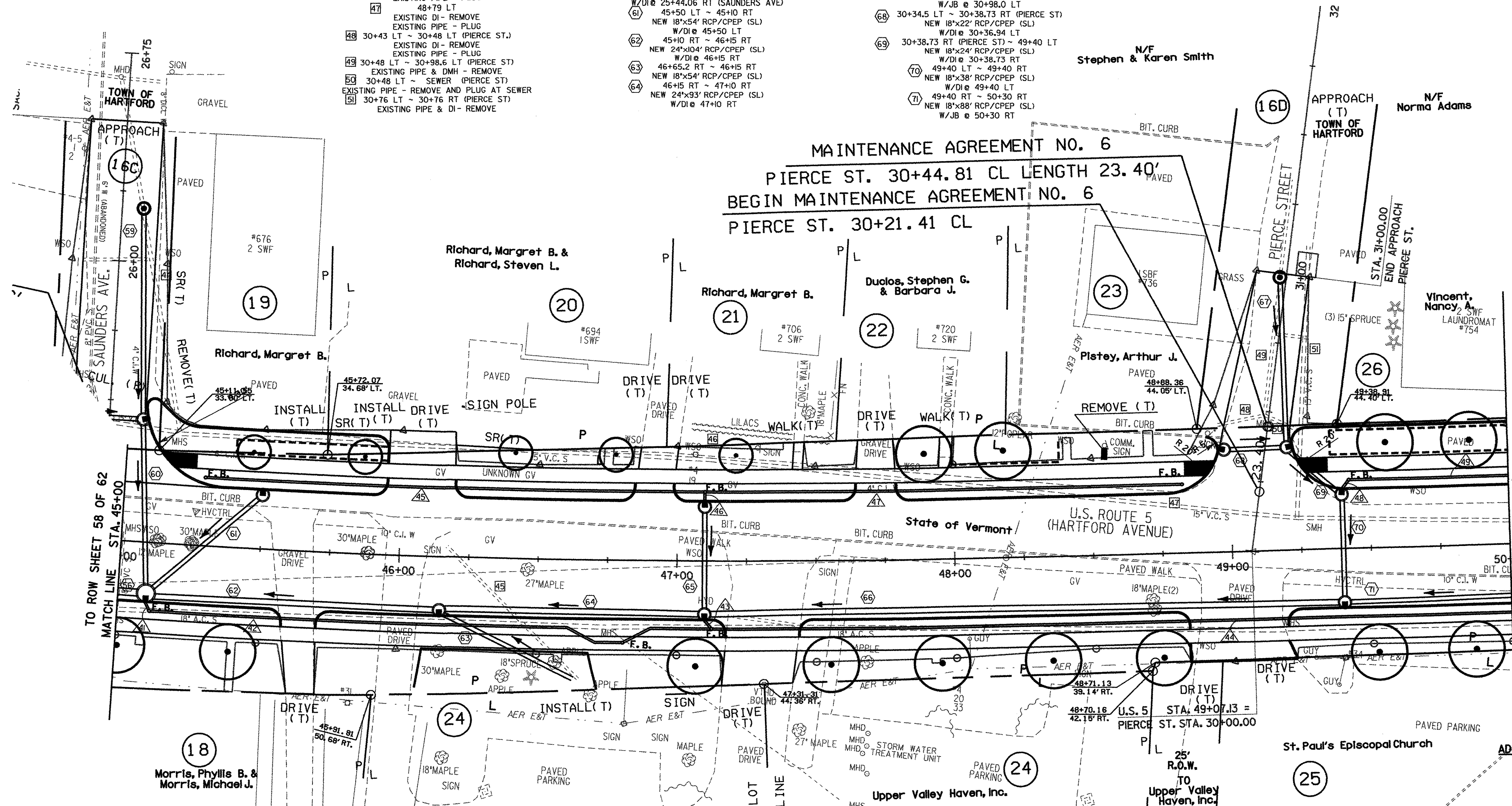
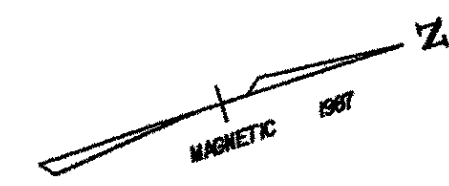
- 56 44+00 RT ~ 45+00 RT NEW 30"x106" RCP/CPEP (SL) W/DI @ 45+10 RT
- 59 26+19.2 RT ~ 25+44.06 RT (SAUNDERS AVE) NEW 18"x72" RCP/CPEP (SL) W/JB @ 26+19.2 (SAUNDERS AVE)
- 60 25+44.06 RT (SAUNDERS AVE) ~ 45+10 RT NEW 18"x61" RCP/CPEP (SL) W/DI @ 25+44.06 RT (SAUNDERS AVE)
- 61 45+50 LT ~ 45+10 RT NEW 18"x54" RCP/CPEP (SL) W/DI @ 45+50 LT
- 62 45+10 RT ~ 46+15 RT NEW 24"x104" RCP/CPEP (SL) W/DI @ 46+15 RT
- 63 46+65.2 RT ~ 46+15 RT NEW 18"x54" RCP/CPEP (SL) W/DI @ 46+15 RT
- 64 46+15 RT ~ 47+10 RT NEW 24"x93" RCP/CPEP (SL) W/DI @ 47+10 RT

**NEW DRAINAGE (CONT.)**

- 65 47+10 LT ~ 47+10 RT NEW 18"x38" RCP/CPEP (SL) W/DI @ 47+10 LT
- 66 47+10 RT ~ 49+40 RT NEW 24"x229" RCP/CPEP (SL) W/DI @ 49+40 RT
- 67 30+98.0 LT ~ 30+38.73 RT (PIERCE ST) NEW 18"x60" RCP/CPEP (SL) W/JB @ 30+98.0 LT
- 68 30+34.5 LT ~ 30+38.73 RT (PIERCE ST) NEW 18"x22" RCP/CPEP (SL) W/DI @ 30+36.94 LT
- 69 30+38.73 RT (PIERCE ST) ~ 49+40 LT NEW 18"x24" RCP/CPEP (SL) W/DI @ 30+38.73 RT
- 70 49+40 LT ~ 49+40 RT NEW 18"x38" RCP/CPEP (SL) W/DI @ 49+40 LT
- 71 49+40 RT ~ 50+30 RT NEW 18"x88" RCP/CPEP (SL) W/JB @ 50+30 RT

**REHABING DI, CB OR MH, CLASS II**

- 46+65.2 RT



TO ROW SHEET 58 OF 62  
MATCH LINE STA. 45+00

MATCH LINE STA. 50+00  
TO ROW SHEET 60 OF 62

FOR EROSION CONTROL DETAIL  
SEE ROW SHEET 32 OF 62

RIGHT-OF-WAY AGENT OF  
PROJECT: FRANK J. MALNATI JR.

**DATUM**  
VERTICAL: NGVD 1929  
HORIZONTAL: N/A

**CHANGING ELEVATION OF SEWER MANHOLE**

- 45+00 RT
- 45+01 LT
- 45+18 LT
- 46+76 RT
- 49+19 RT
- 49+24 LT
- 30+49 LT (PIERCE STREET)
- 8" UNDERDRAIN**
- 45+12 RT ~ 47+12 RT NEW 8"x204" UNDERDRAIN W/F.B. @ 46+81 RT
- 47+12 RT ~ 50+30 RT NEW 8"x38" UNDERDRAIN W/F.B. @ 50+30 RT
- 45+29 LT ~ 47+10 LT NEW 8"x18" UNDERDRAIN W/F.B. @ 45+29 LT
- 47+10 LT ~ 48+83 LT NEW 8"x173" UNDERDRAIN W/F.B. @ 48+83 LT
- 49+43 LT ~ 51+50 LT NEW 8"x207" UNDERDRAIN W/F.B. @ 51+50 LT

LINES SHOWN ON THIS PLAN AS EXISTING PROPERTY LINES P/L ARE BELIEVED TO BE ACCURATE BUT SHOULD NOT BE RELIED UPON FOR PURPOSES UNRELATED TO THE STATE OF VERMONT'S ACQUISITION OF LAND AND RIGHTS FOR THIS PROJECT.

**Upper Valley Haven, Inc.**

**8" UNDERDRAIN CARRIER PIPE**

- 45+10 RT ~ 45+12 RT NEW 8"x3" UNDERDRAIN CARRIER PIPE W/F.B. @ 45+12 RT
- 47+10 RT ~ 47+12 RT NEW 8"x4" UNDERDRAIN CARRIER PIPE W/F.B. @ 47+12 RT
- 47+10 LT ~ 47+10 LT NEW 8"x4" UNDERDRAIN CARRIER PIPE W/F.B. @ 47+10 LT
- 49+40 LT ~ 49+43 LT NEW 8"x5" UNDERDRAIN CARRIER PIPE W/F.B. @ 49+43 LT

**GRANITE SLOPE EDGING**

- 45+95 ~ 46+11 RT

**VERTICAL GRANITE CURB**

- 45+00 ~ 45+39 RT
- 45+71 ~ 45+93 RT
- 46+11 ~ 47+18 RT
- 47+44 ~ 48+78 RT
- 49+26 ~ 50+00 RT
- 45+06 ~ 45+98 LT
- 46+20 ~ 46+95 LT
- 46+99 ~ 47+65 LT
- 47+80 ~ 48+96 LT
- 49+27 ~ 50+00 LT

**BITUMINOUS CONCRETE CURB, TYPE B**

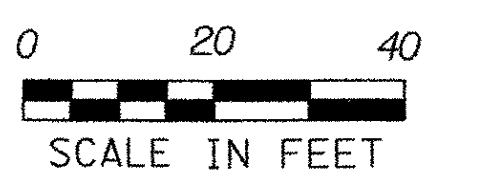
- 45+06 LT ~ 45+90 LT
- 45+91 LT ~ 45+94 LT
- 49+24 LT ~ 50+00 LT

**PORTLAND CEMENT CONCRETE SIDEWALK, 5 INCH**

- 45+13 ~ 45+90 LT
- 46+25 ~ 46+80 LT
- 47+05 ~ 48+95 LT
- 49+24 ~ 49+98 LT
- 45+00 ~ 45+90 RT
- 46+16 ~ 47+13 RT
- 47+49 ~ 48+80 RT
- 49+25 ~ 50+00 RT
- 47+43 LT (PRIVATE)
- 47+96 LT (PRIVATE)

**PORTLAND CEMENT CONCRETE SIDEWALK, 8 INCH**

- 45+90 ~ 46+25 LT
- 45+90 ~ 46+16 RT
- 46+80 ~ 47+05 LT
- 47+13 ~ 47+49 RT
- 48+80 ~ 49+25 RT
- 49+98 ~ 50+00 LT



**CONSTRUCT CONCRETE SIDEWALK RAMPS W/ DETECTABLE WARNING SURFACE**

- 25+30 RT TYPE I (SAUNDERS AVE)
- 30+27 LT TYPE I (PIERCE ST)
- 30+33 RT TYPE I (PIERCE ST)

**CONSTRUCT BITUMINOUS CONCRETE DRIVES**

- 45+59 ~ 45+71 RT
- 47+18 ~ 47+44 RT
- 48+83 ~ 49+20 RT
- 45+95 ~ 46+20 LT
- 46+85 ~ 46+99 LT
- 47+65 ~ 47+79 LT

**REMOVING AND RESETTING PROPERTY MARKERS**

- 47+31 RT

FOR LANDSCAPE DETAIL  
SEE ROW SHEET 41 OF 62

**ADJUST ELEVATION OF GATE VALVE**

- 45+09 LT
- 45+13 LT
- 46+17 LT
- 46+33 LT
- 46+39 LT
- 46+60 LT
- 47+11 LT
- 47+20 LT
- 47+85 LT
- 47+95 RT
- 48+43 RT
- 48+90 RT
- 49+67 LT

**DUCTILE, IRON PIPE, CEM. LINED**

- 47+22 LT ~ 47+25 LT

**GATE VALVE AND VALVE BOX**

- 47+25 LT

**HYDRANT, RELOCATE**

- 47+30 RT
- RELOCATE TO 47+25 LT

PROJECT: <b>HARTFORD</b>	PROJECT NO.: <b>RS 0113(40)</b>
DESIGN FILE NAME: z027bdr.dgn	PLOT DATE: 04-DEC-2006
IPARM FILE NAME:	SURVEY DATE: 1/87
SURVEYED BY: FANTONI	DRAWN BY: E. ATKINS
SQUAD LEADER: KEN UPMAL	SHEET 40 OF 239
ROW SHEET 59 OF 62	