

REMOVE EXISTING SIDEWALK (COMMON EXCAVATION)

40+00 ~ 40+68 RT
4+H ~ 42+00 RT
42+00 ~ 43+62 LT
43+85 ~ 44+35 LT
44+52 ~ 45+00 LT

EXISTING DRAINAGE

33 40+12 LT
EXISTING DI - REMOVE
EXISTING PIPE - PLUG
34 4+H6 RT ~ 4+20 RT
EXISTING DI @ 4+H6 RT - REMOVE
EXISTING DI @ 4+20 RT - RETAIN
EXISTING PIPE - RETAIN
35 4+20 RT ~ 4+68 RT
EXISTING DI - REMOVE
EXISTING PIPE - PLUG
36 42+05 LT
EXISTING DI - REMOVE
EXISTING PIPE - PLUG
37 43+57 LT
EXISTING DI - REMOVE
EXISTING PIPE - PLUG
38 44+68 LT
EXISTING DI - REMOVE
EXISTING PIPE - PLUG
39 44+80 LT
EXISTING DI - REMOVE
EXISTING PIPE - PLUG
40 26+00 LT ~ 26+01 RT (SAUNDERS AVE)
EXISTING PIPE & DI - REMOVE
42 26+66 LT ~ 26+75 LT (SAUNDERS AVE)
EXISTING PIPE - RETAIN
43 26+66 LT ~ 26+67 RT (SAUNDERS AVE)
EXISTING PIPE - RETAIN

NEW DRAINAGE

45 38+85 RT ~ 40+10 RT
NEW 36"x124' RCP/CPEP (SL)
W/DI @ 40+10 RT
47 20+49.62 RT (HEBARD AVE) ~ 40+10 RT
NEW 18"x23' RCP/CPEP (SL)
W/DI @ 20+49.62 RT
48 40+10 LT ~ 40+10 RT
NEW 18"x59' RCP/CPEP (SL)
W/DI @ 40+10 RT
49 40+10 RT ~ 4+H6.36 RT
NEW 36"x106' RCP/CPEP (SL)
W/UB @ 4+H6.36 RT
50 4+H6.36 RT ~ 43+50 RT
NEW 36"x234' RCP/CPEP (SL)
W/DI @ 43+50 RT
51 43+50 RT ~ 43+50 RT
NEW 18"x12' RCP/CPEP (SL)
W/DI @ 43+50 RT
52 43+55 LT ~ 43+50 LT
NEW 18"x17' RCP/CPEP (SL)
W/DI @ 43+55 LT
53 43+50 LT ~ 43+50 RT
NEW 18"x37' RCP/CPEP (SL)
W/DI @ 43+50 LT
54 43+50 RT ~ 44+00 RT
NEW 36"x46' RCP/CPEP (SL)
W/DI @ 44+00 RT
55 44+00 LT ~ 44+00 RT
NEW 18"x38' RCP/CPEP (SL)
W/DI @ 44+00 RT
56 44+00 RT ~ 45+10 RT
NEW 30"x106' RCP/CPEP (SL)
W/DI @ 45+10 RT
57 25+44 LT ~ 25+44.06 LT (SAUNDERS AVE)
NEW 18"x8' RCP/CPEP (SL)
W/DI @ 25+44 LT
58 25+44.06 LT ~ 25+44.06 RT (SAUNDERS AVE)
NEW 18"x23' RCP/CPEP (SL)
W/DI @ 25+44.06 LT
59 26+19.2 RT ~ 25+44.06 RT (SAUNDERS AVE)
NEW 18"x72' RCP/CPEP (SL)
W/UB @ 26+19.2 RT

CHANGING ELEVATION OF SEWER MANHOLE

4+88 LT
4+96 RT
43+54 RT
25+42 LT (SAUNDERS AVE)
25+59 LT (SAUNDERS AVE)

8" UNDERDRAIN

38+90 RT ~ 40+H RT
NEW 8"x12' UNDERDRAIN
W/F.B. @ 38+90 RT
40+H RT ~ 4+H0 RT
NEW 8"x99' UNDERDRAIN
W/F.B. @ 4+H0 RT
40+50 LT ~ 4+75 LT
NEW 8"x125' UNDERDRAIN
W/F.B. @ 4+75 LT
43+56 LT ~ 44+54 LT
NEW 8"x96' UNDERDRAIN
W/F.B. @ 43+56 LT & 44+54 LT
4+25 RT ~ 44+00 RT
NEW 8"x275' UNDERDRAIN
W/F.B. @ 4+25 RT
44+00 RT ~ 44+90 RT
NEW 8"x90' UNDERDRAIN
W/F.B. @ 44+90 RT

8" UNDERDRAIN CARRIER PIPE

39+57 LT ~ 40+H0 LT
NEW 8"x53' UNDERDRAIN CARRIER PIPE
W/F.B. @ 39+57 LT
40+H0 RT ~ 40+H RT
NEW 8"x3' UNDERDRAIN CARRIER PIPE
W/F.B. @ 40+H RT
40+H0 LT ~ 40+50 LT
NEW 8"x40' UNDERDRAIN CARRIER PIPE
W/F.B. @ 40+50 LT
44+00 RT ~ 44+00 RT
NEW 8"x4' UNDERDRAIN CARRIER PIPE
W/F.B. @ 44+00 RT

VERTICAL GRANITE CURB

40+00 ~ 4+33 RT
4+59 ~ 43+63 RT
43+79 ~ 44+36 RT
44+52 ~ 45+00 RT
40+00 ~ 40+94 LT
4+35 ~ 43+58 LT
43+83 ~ 44+79 LT

BITUMINOUS CONCRETE CURB, TYPE B

43+47 ~ 25+50 LT (SAUNDERS AVE)
25+50 RT (SAUNDERS AVE) ~ 45+00 LT

PORTLAND CEMENT CONCRETE SIDEWALK, 5 INCH

40+00 ~ 4+27 RT
40+00 ~ 40+89 LT
4+65 ~ 45+00 RT
4+42 ~ 43+53 LT
43+89 ~ 44+57 LT
4+96 ~ 43+46 LT (PRIVATE)

PORTLAND CEMENT CONCRETE SIDEWALK, 8 INCH

40+89 ~ 4+42 LT
4+27 ~ 4+65 RT
43+53 ~ 43+89 LT

CONSTRUCT CONCRETE SIDEWALK RAMPS W/ DETECTABLE WARNING SURFACE

25+28 LT TYPE I (SAUNDERS AVE)

CONSTRUCT BITUMINOUS CONCRETE DRIVES

2+03 ~ 2+33 RT (HEBARD AVE)
4+33 ~ 4+59 RT
43+64 ~ 43+79 RT
44+36 ~ 44+52 RT
40+94 ~ 4+35 LT
43+58 ~ 43+83 LT

REMOVAL OF EXISTING FENCE

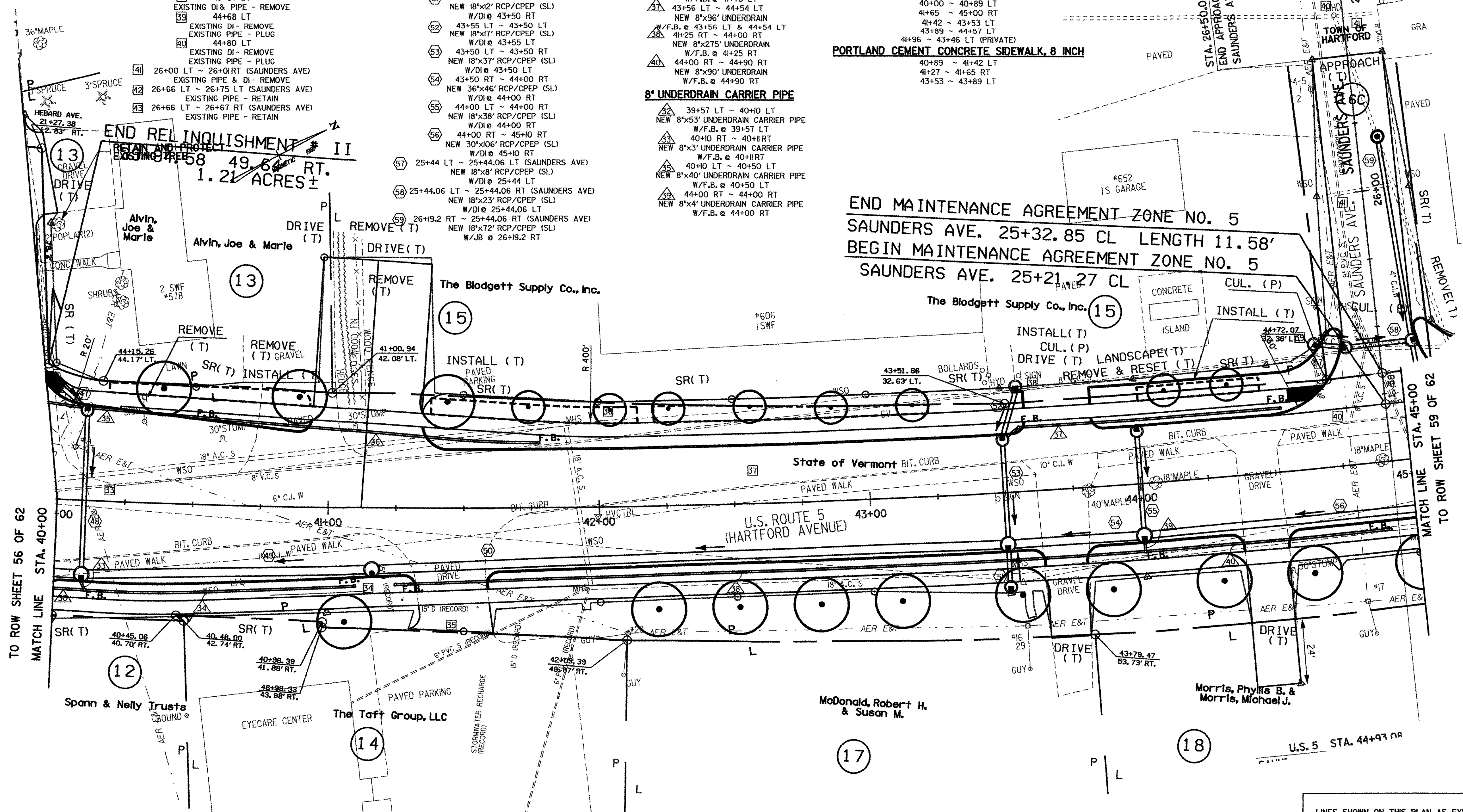
4+09 ~ 4+12 LT

ADJUST ELEVATION OF VALVE BOX

40+50 LT
40+57 RT
4+94 RT
42+91 LT
43+04 LT
43+58 LT
44+89 LT
45+04 LT
26+04 RT (SAUNDERS AVE)
26+05 LT (SAUNDERS AVE)

DUCTILE IRON PIPE, CEM. LINED

43+45 LT ~ 43+62 LT
NEW 6"x17' DI PIPE

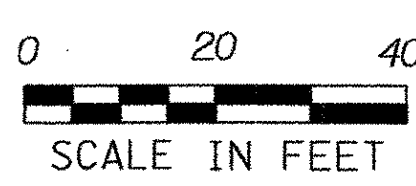


END MAINTENANCE AGREEMENT ZONE NO. 5
SAUNDERS AVE. 25+32.85 CL LENGTH 11.58'
BEGIN MAINTENANCE AGREEMENT ZONE NO. 5
SAUNDERS AVE. 25+21.27 CL

FOR LANDSCAPE DETAIL
SEE ROW SHEET 40 OF 62

FOR EROSION CONTROL DETAIL
SEE ROW SHEET 31 OF 62

RIGHT-OF-WAY AGENT OF
PROJECT: FRANK J. MALNATI JR.



LINES SHOWN ON THIS PLAN AS EXISTING
PROPERTY LINES P/L ARE BELIEVED TO
BE ACCURATE BUT SHOULD NOT BE RELIED
UPON FOR PURPOSES UNRELATED TO THE
STATE OF VERMONT'S ACQUISITION OF LAND
AND RIGHTS FOR THIS PROJECT.

DATUM
VERTICAL NGVD 1929
HORIZONTAL N/A

PROJECT: HARTFORD	PROJECT NO. : RS 0113(40)
DESIGN FILE NAME: z027bdr.dgn	PLOT DATE: 04-DEC-2006
IPARM FILE NAME:	SURVEY DATE: 1/87
SURVEYED BY: FANTONI	DRAWN BY: E. ATKINS
SQUAD LEADER: KEN UPMAL	SHEET 39 OF 239
ROW SHEET 58 OF 62	

ROADWAY LAYOUT SHEET 5