

EXCAVATION OF SURFACES AND PAYEMENTS

0+55 ~ 1+32 LT (WORCESTER AVE.)
20+47 ~ 2+37 LT (HEBARD AVE.)

REMOVE EXISTING SIDEWALK (COMMON EXCAVATION)

39+04 ~ 39+87 RT
39+96 ~ 40+00 RT
35+00 ~ 39+20 LT
36+91 LT ~ 12+00 LT (HIGHLAND AVE)
11+82 LT ~ 11+85 RT (HIGHLAND AVE)

EXISTING DRAINAGE

- 22 11+7 LT ~ 14+00 LT (HIGHLAND AVE)
EXISTING PIPE - RETAIN
EXISTING MH - REMOVE
- 23 11+7 LT ~ 10+93 RT (HIGHLAND AVE)
EXISTING PIPE - PLUG
EXISTING MH - REMOVE
- 24 11+7 LT (HIGHLAND AVE) ~ 15+78 RT (SCHOOL DR)
EXISTING PIPE - RETAIN
EXISTING DI - REMOVE
- 25 11+25 RT ~ 11+37 LT (HIGHLAND AVE)
EXISTING PIPE - PLUG
EXISTING DI - REMOVE
- 26 11+39 RT ~ 11+85 LT (HIGHLAND AVE)
EXISTING PIPE - PLUG
EXISTING DI - REMOVE
- 27 13+41 RT ~ 13+41 LT (HIGHLAND AVE)
EXISTING PIPE & DI - RETAIN
- 28 5+52.6 LT ~ 6+75 LT (WORCESTER AVE)
EXISTING PIPE - RETAIN
- 29 5+61.6 LT ~ 5+52.6 LT (WORCESTER AVE)
EXISTING PIPE & DI - REMOVE
- 30 5+52.6 LT ~ 5+09 RT (WORCESTER AVE)
EXISTING PIPE - PLUG
EXISTING MH @ 5+52.6 LT - RETAIN
- 31 35+33 RT
EXISTING PIPE - PLUG
EXISTING DI - REMOVE
- 32 36+20 LT
EXISTING PIPE - PLUG
EXISTING DI - REMOVE

RETAINING WALL

35+00 ~ 36+50 RT

NEW DRAINAGE

- 28 34+20 RT ~ 36+27 RT
NEW 36"x206" CAAP
W/DI @ 36+27 RT
- 29 36+27 LT ~ 36+27 RT
NEW 18"x20" RCP/CPEP (SL)
W/DI @ 36+27 LT
- 30 36+27 LT ~ 36+27 RT
NEW 18"x58" RCP/CPEP (SL)
W/DI @ 36+27 LT
- 31 36+27 RT ~ 36+75 RT
NEW 36"x42" CAAP
W/DI @ 36+75 RT
- 32 5+61.6 RT ~ 5+53.6 LT (WORCESTER AVE)
NEW 18"x25" RCP/CPEP (SL)
W/DI @ 5+61.6 RT
- 33 5+53.6 LT ~ 5+52.6 LT (WORCESTER AVE)
NEW 18"x6" RCP/CPEP (SL)
W/DI @ 5+53.6 LT
- 34 5+52.6 LT (WORCESTER AVE) ~ 36+75 RT
NEW 18"x36" RCP/CPEP (SL)
W/JB @ 5+52.6 LT
- 35 36+75 RT ~ 37+95 RT
NEW 36"x19" RCP/CPEP (SL)
W/DI @ 37+95 RT
- 36 3+20.57 RT ~ 3+20.57 LT (WORCESTER AVE)
NEW 18"x33" RCP/CPEP (SL)
W/DI @ 3+20.57 RT
- 37 3+20.57 LT (WORCESTER AVE) ~ 37+95 RT
NEW 18"x37" RCP/CPEP (SL)
W/DI @ 3+20.57 LT
- 38 15+69.6 RT ~ 15+69.6 LT (SCHOOL DR)
NEW 18"x21" RCP/CPEP (SL)
W/DI @ 15+69.6 RT
- 39 15+69.6 LT ~ 15+29.9 LT (SCHOOL DR)
NEW 18"x42" RCP/CPEP (SL)
W/DI @ 15+69.6 LT
- 40 15+29.9 LT (SCHOOL DR) ~ 11+6.9 LT (HIGHLAND AVE)
NEW 18"x80" RCP/CPEP (SL)
W/DI @ 15+29.9 LT
- 41 11+6.9 LT ~ 10+65.57 LT (HIGHLAND AVE)
NEW 24"x44" RCP/CPEP (SL)
W/JB @ 11+6.9 LT
- 42 10+41.9 RT ~ 10+65.57 LT (HIGHLAND AVE)
NEW 18"x84" RCP/CPEP (SL)
W/DI @ 10+41.9 RT
- 43 10+65.57 LT (HIGHLAND AVE) ~ 37+95 RT
NEW 24"x71" RCP/CPEP (SL)
W/DI @ 10+65.57 LT
- 44 37+95 RT ~ 38+85 RT
NEW 36"x81" RCP/CPEP (SL)
W/DI @ 38+85 RT
- 45 38+85 RT ~ 40+10 RT
NEW 36"x124" RCP/CPEP (SL)
W/DI @ 40+10 RT
- 46 20+49.62 LT ~ 20+49.62 RT (HEBARD AVE)
NEW 18"x15" RCP/CPEP (SL)
W/DI @ 20+49.62 LT

CHANGING ELEVATION OF SEWER MANHOLE

35+51 RT
39+93 LT
38+31 RT

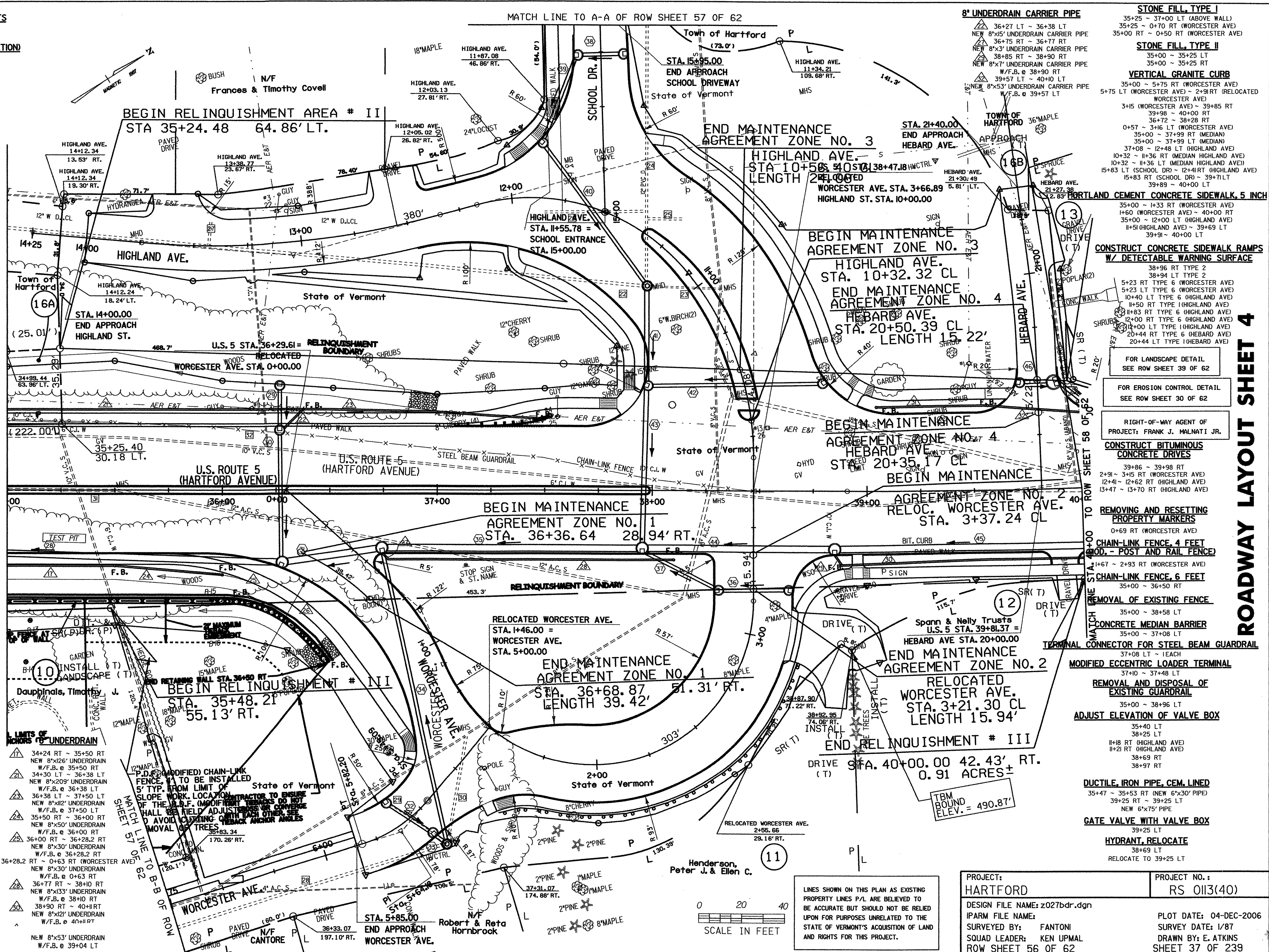
1+40 RT (WORCESTER AVE)
3+17 LT (WORCESTER AVE)
10+93 RT (HIGHLAND AVE)
11+29 RT (HIGHLAND AVE)

CHANGING ELEV. OF DROP INLETS, CATCH BASINS, OR MANHOLES

MHD @ 13+76 RT (HIGHLAND AVE)

DATUM

VERTICAL NGVD 1929
HORIZONTAL N/A



ROADWAY LAYOUT SHEET 4

PROJECT: HARTFORD	PROJECT NO. 1: RS 0113(40)
DESIGN FILE NAME: z027bdr.dgn	PLOT DATE: 04-DEC-2006
IPARM FILE NAME:	SURVEY DATE: 1/87
SURVEYED BY: FANTONI	DRAWN BY: E. ATKINS
SQUAD LEADER: KEN UPMAL	SHEET 37 OF 239
ROW SHEET 56 OF 62	

LINES SHOWN ON THIS PLAN AS EXISTING PROPERTY LINES P/L ARE BELIEVED TO BE ACCURATE BUT SHOULD NOT BE RELIED UPON FOR PURPOSES UNRELATED TO THE STATE OF VERMONT'S ACQUISITION OF LAND AND RIGHTS FOR THIS PROJECT.