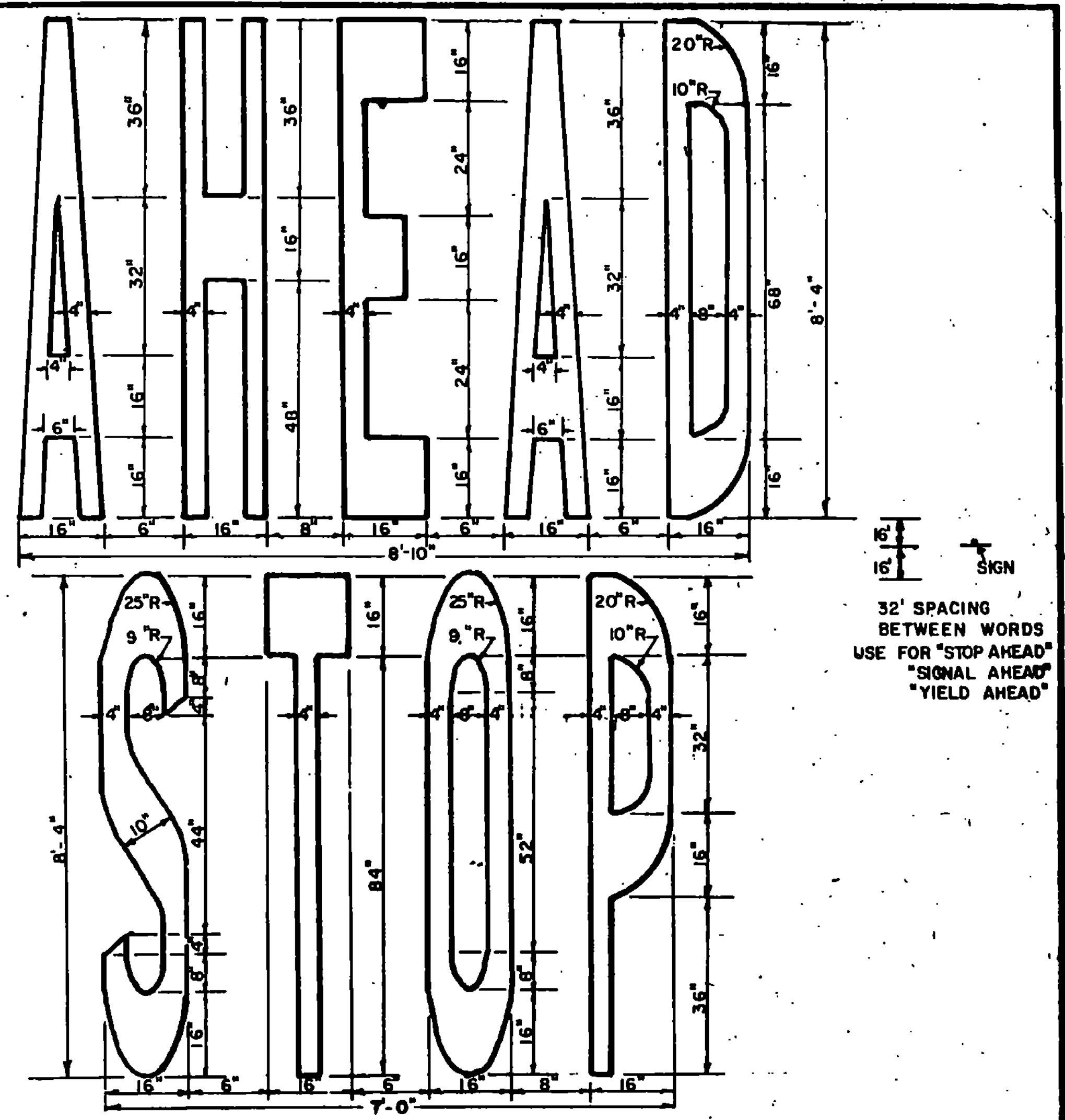
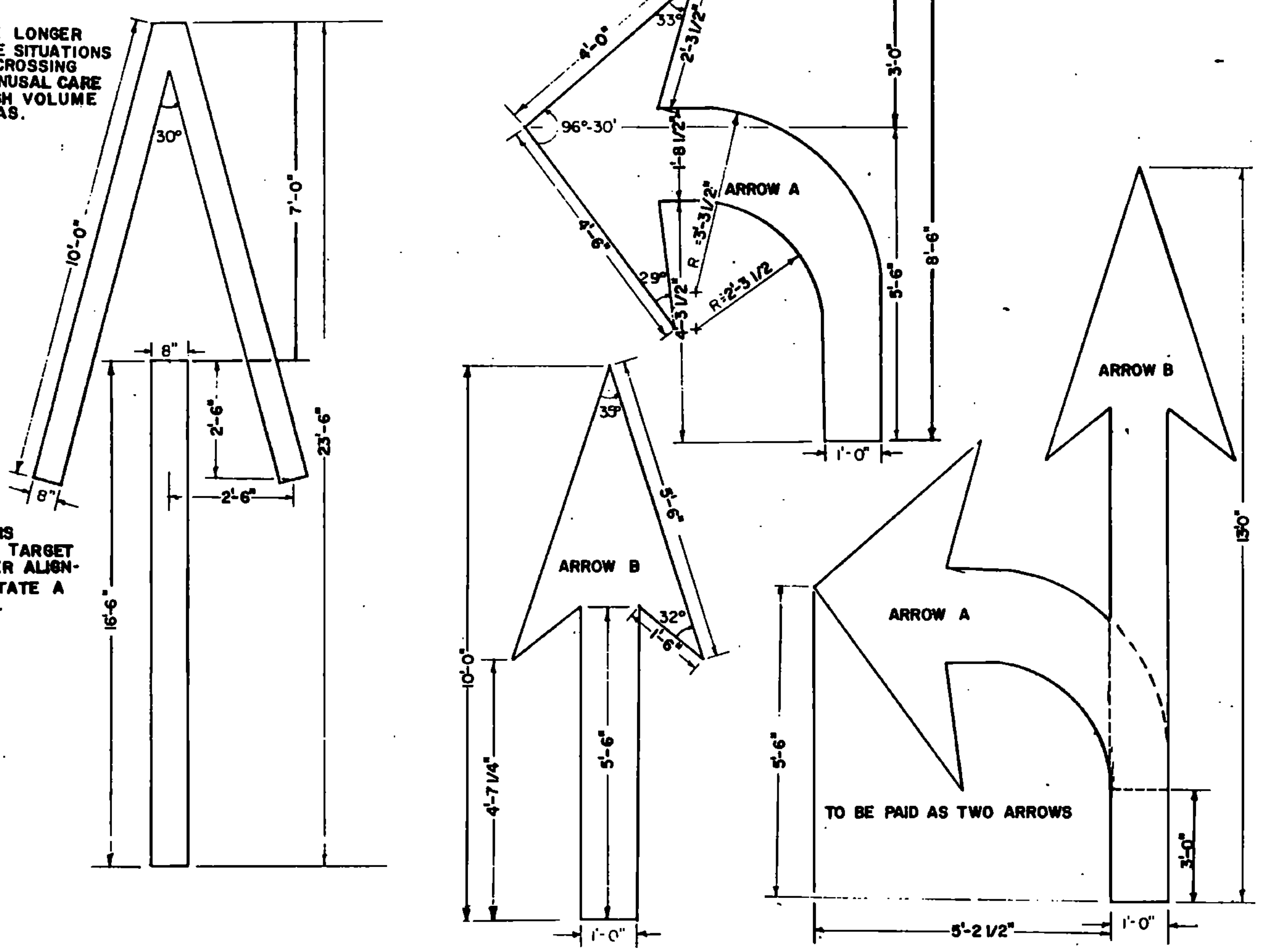
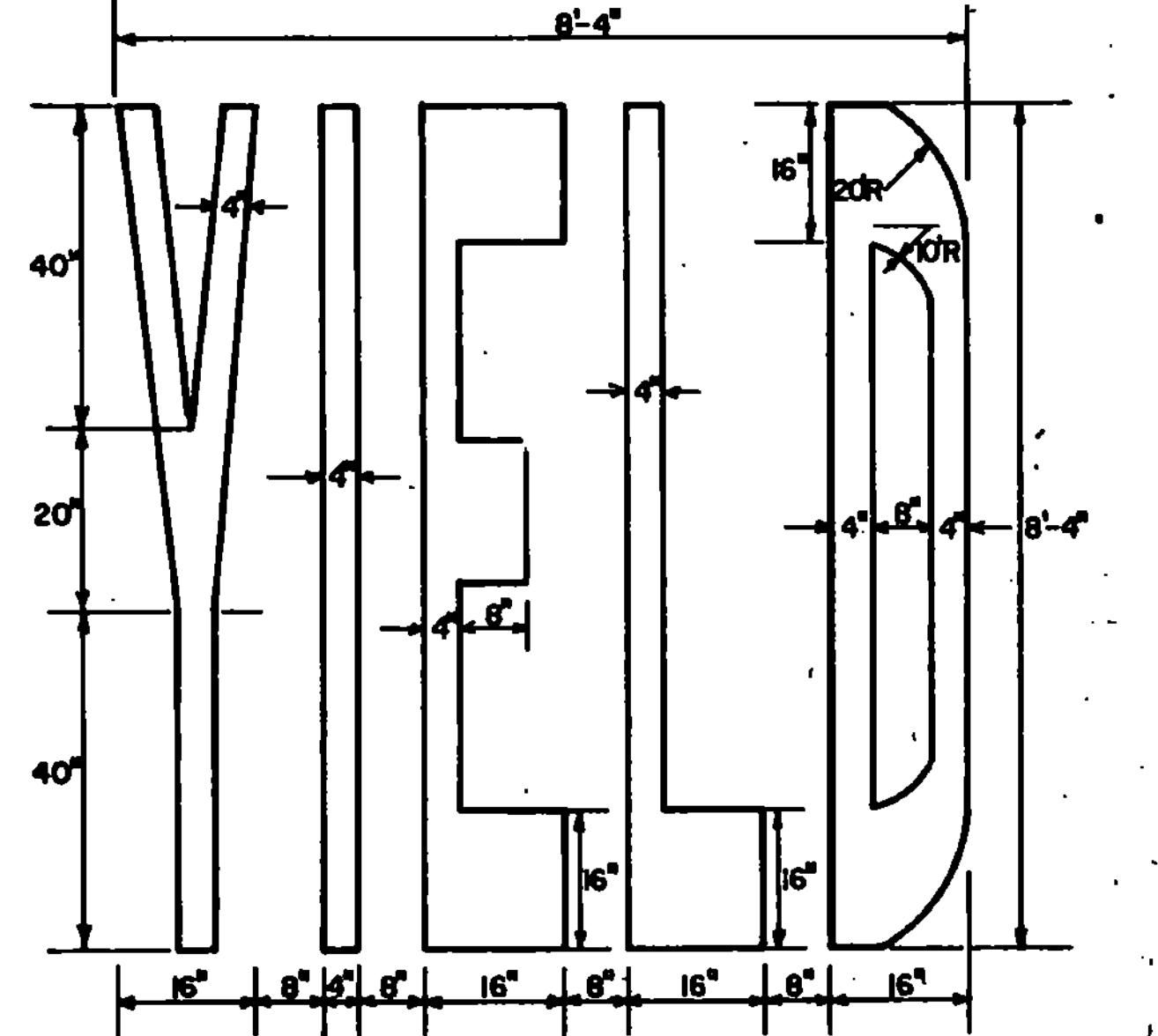
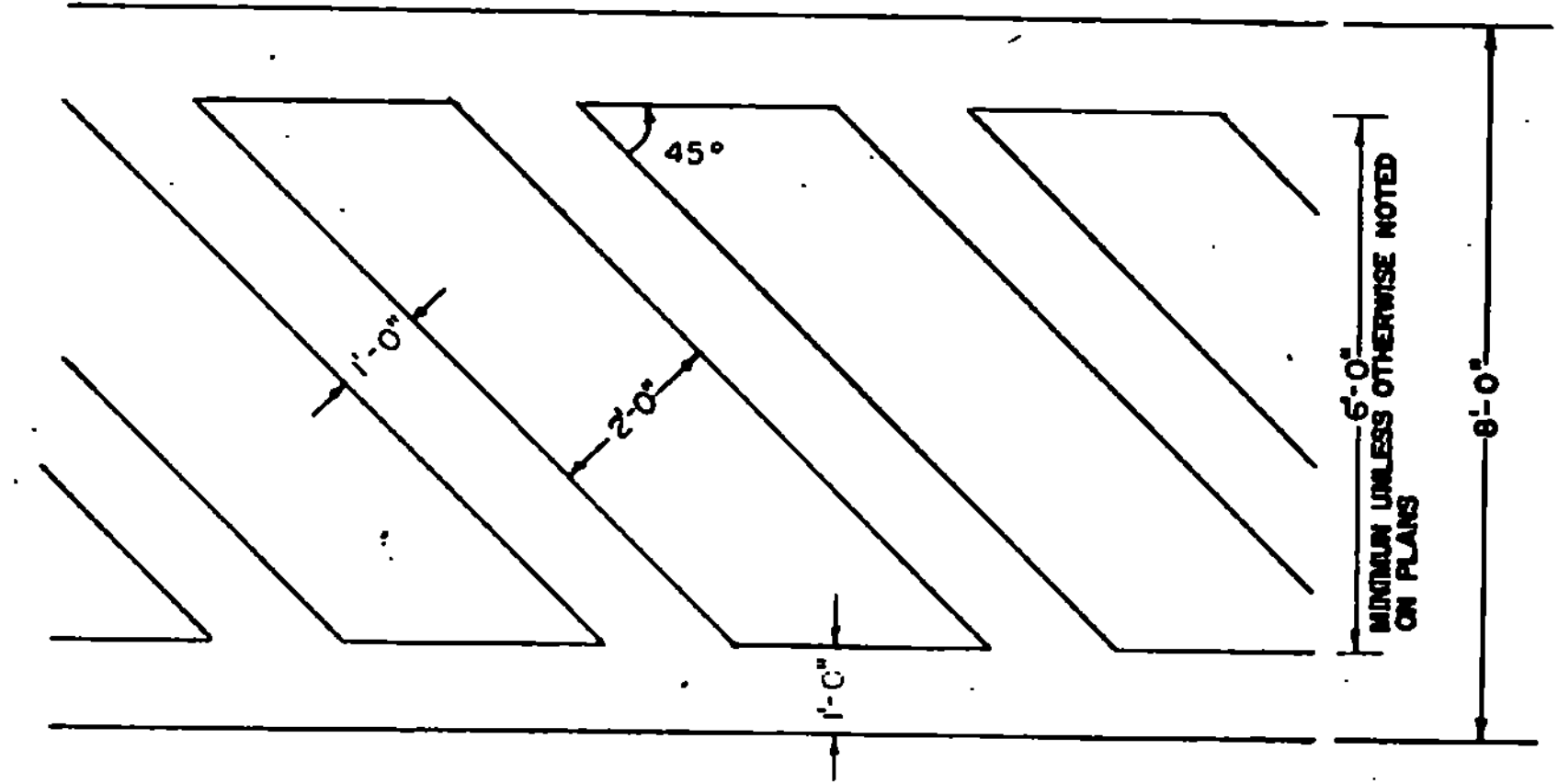
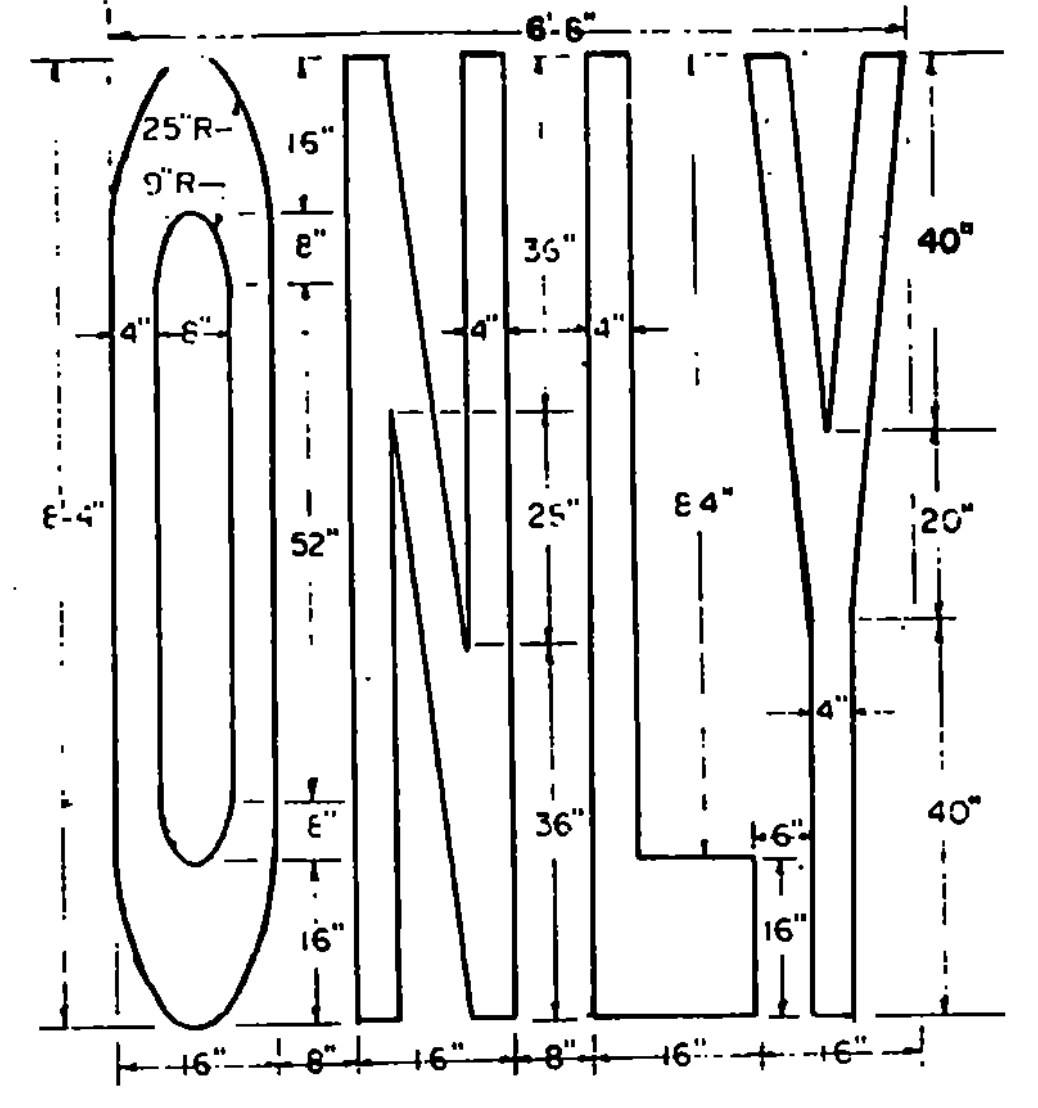


TRANSVERSE LINES SHALL CONSIST OF 8" WHITE LINES SPACED 5'-0" C-C AND SET AT 45° TO MAIN LINE EDGE LINES. THESE MARKINGS SHALL BE USED TO INCREASE VISIBILITY DUE TO DIFFICULT VERTICAL OR HORIZONTAL ALIGNMENT.

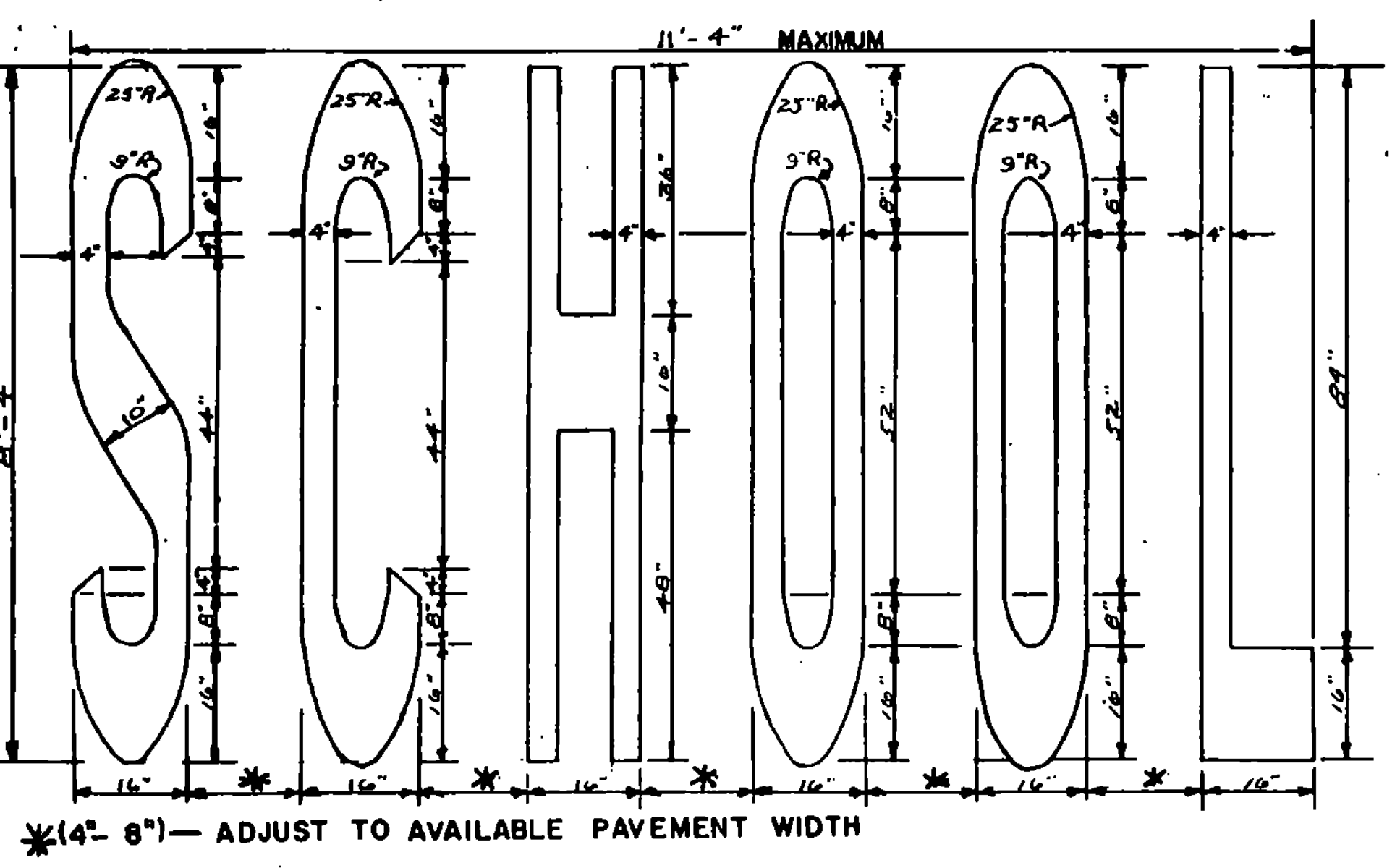
RAMP PAVEMENT ARROW DETAIL



CROSSWALK DETAIL



ARROWS AND WORD MARKINGS THAT CONFORM TO THE DIMENSIONS SHOWN ON THIS SHEET OR AS DETAILED IN THE BOOKLET ENTITLED "THE STANDARD PAVEMENT MARKING ALPHABET AND SYMBOLS, 1977" PREPARED BY THE FEDERAL HIGHWAY ADMINISTRATION WILL BE ACCEPTABLE.



* (4" - 8") - ADJUST TO AVAILABLE PAVEMENT WIDTH

REVISIONS AND CORRECTIONS

MAR. 18, 1982 YIELD ADDED.

SEPT. 20, 1985 REVISED GORE MARKINGS & "SCHOOL" SPACING

FEB. 3, 1986 - UPDATED TO 1986 SPECIFICATIONS

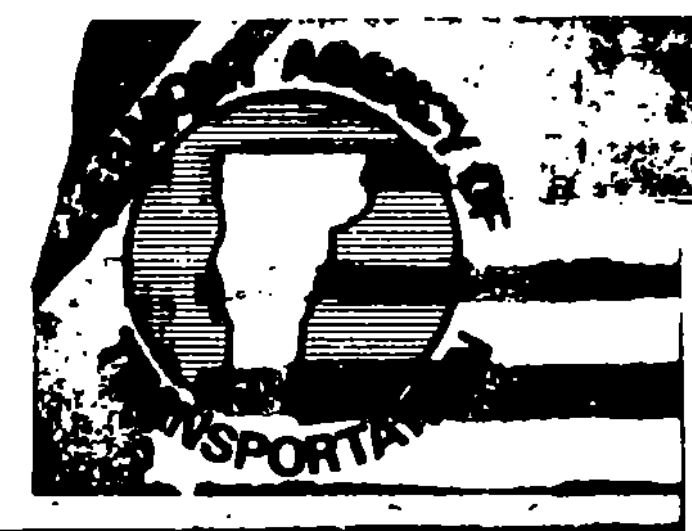
APPROVED: **AUGUST 4, 1981** DATE

S. J. Page
DIRECTOR OF ENGINEERING AND CONSTRUCTION

Ch. J. Long
CHIEF OF DESIGN

John L. ...
TRANSPORTATION DESIGN ENGINEER

PAVEMENT MARKING DETAILS



E-50