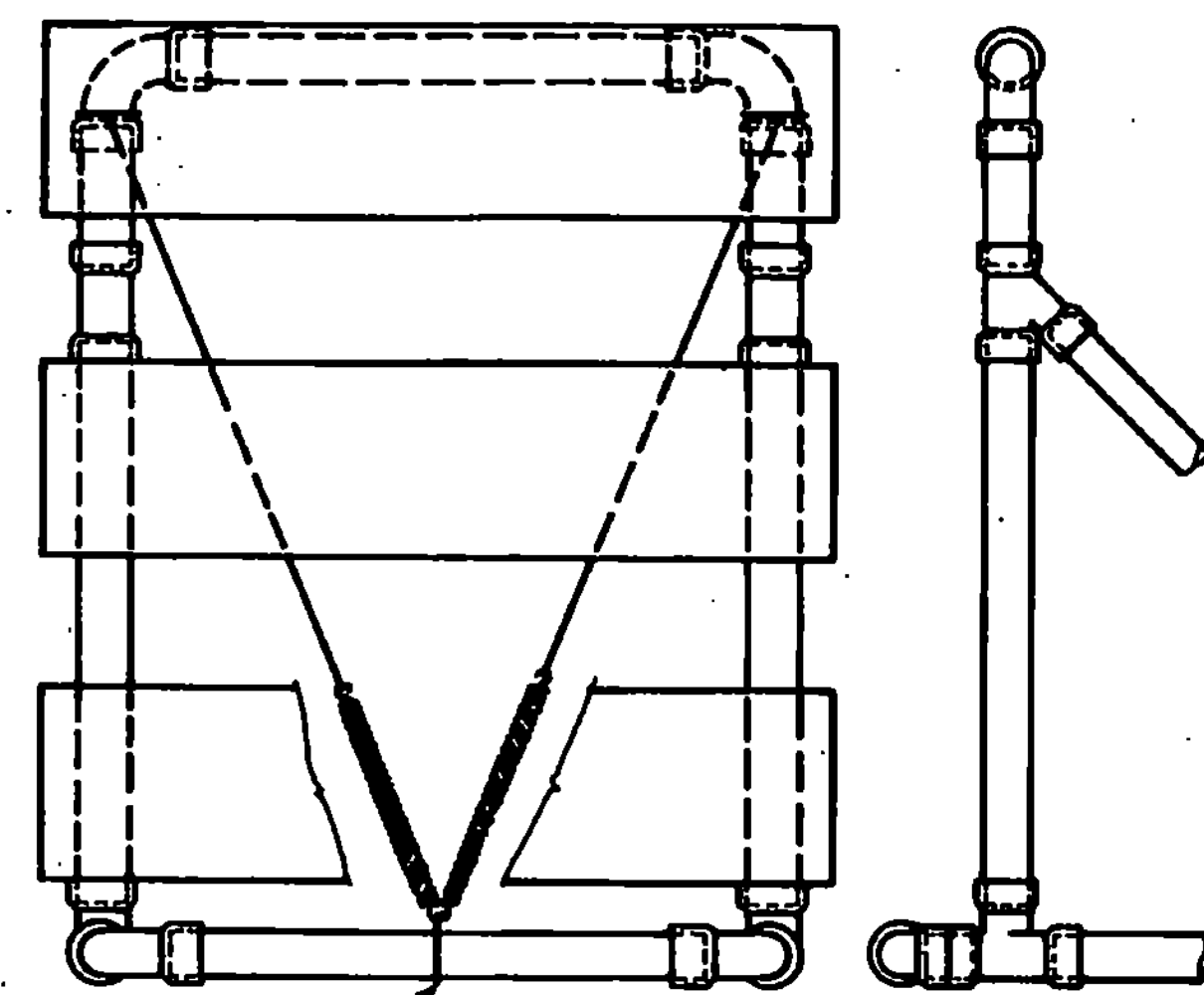
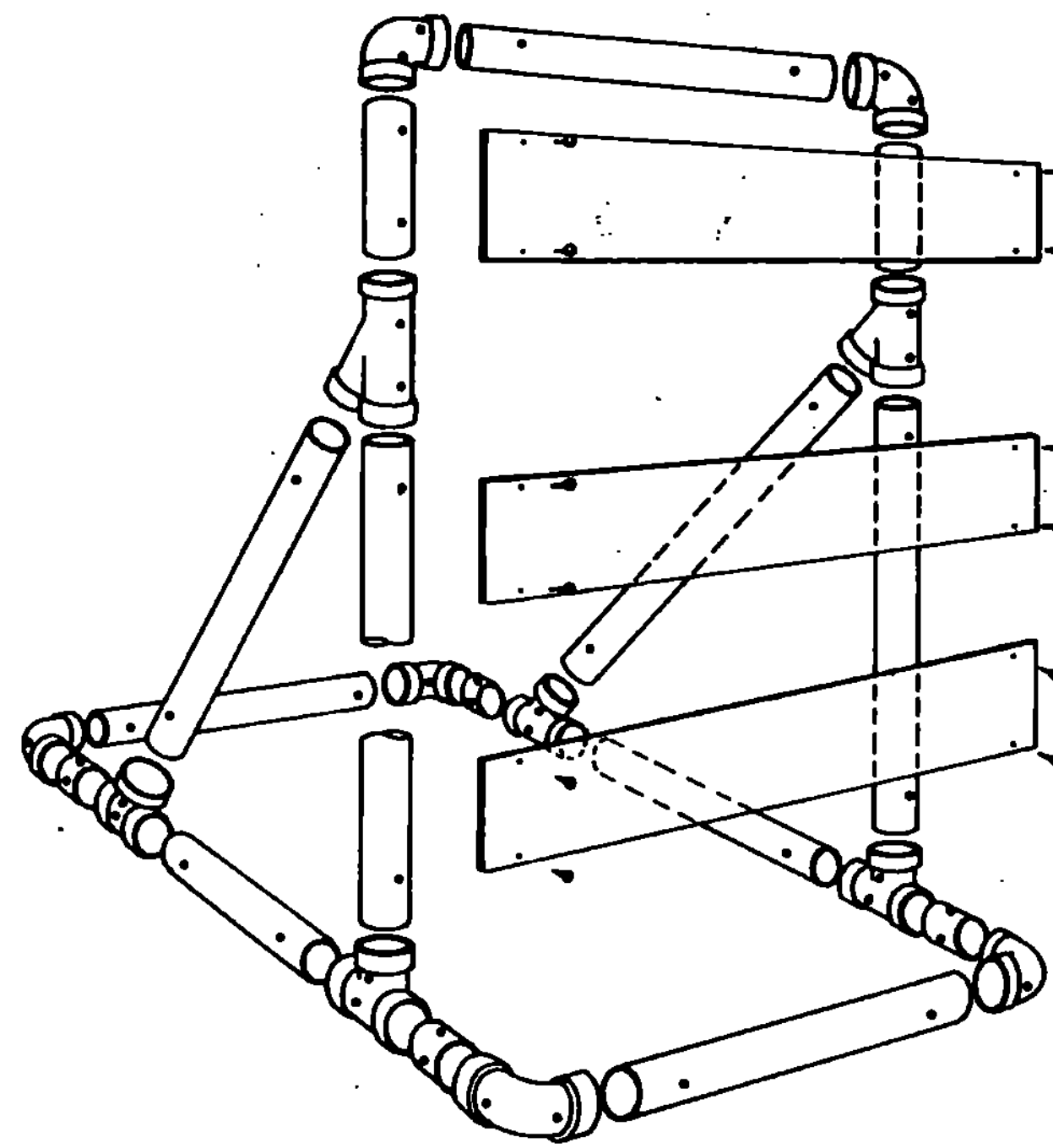


SIDE VIEW



FRONT VIEW



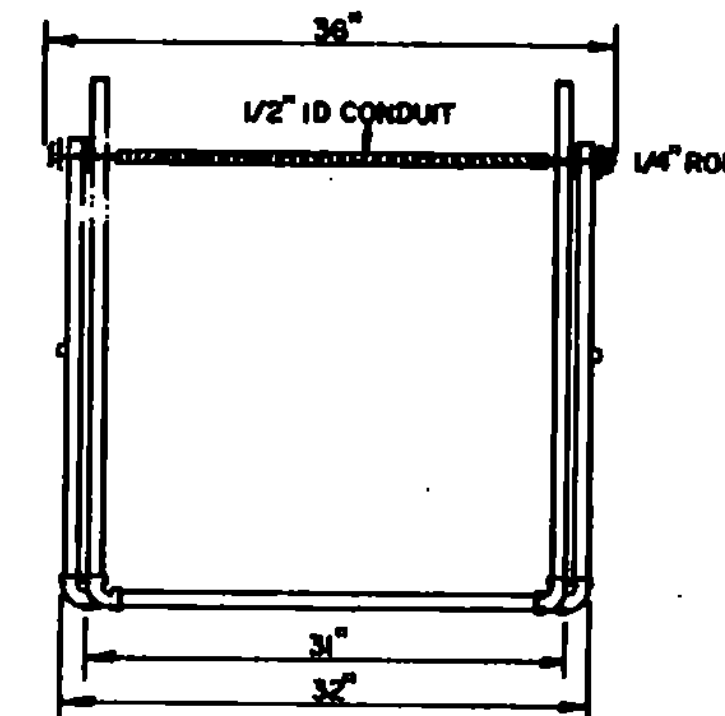
BARRICADE ASSEMBLY

MATERIALS LIST FOR ONE BARRICADE

3" Diameter Pipe	30 LF
3" 1/4 Bend Elbow	6 EA
3" Tees	2 EA
3" Wyes	4 EA
8" x 48" x 0.25 Barricade Panels	2 EA
5/8" x 11" No. 8 Spring	2 EA
1" No. 14 Pan Head Metal Screws	12 EA
No. 14 Black Annealed Tie Wire	15 LF

WARNING LIGHTS

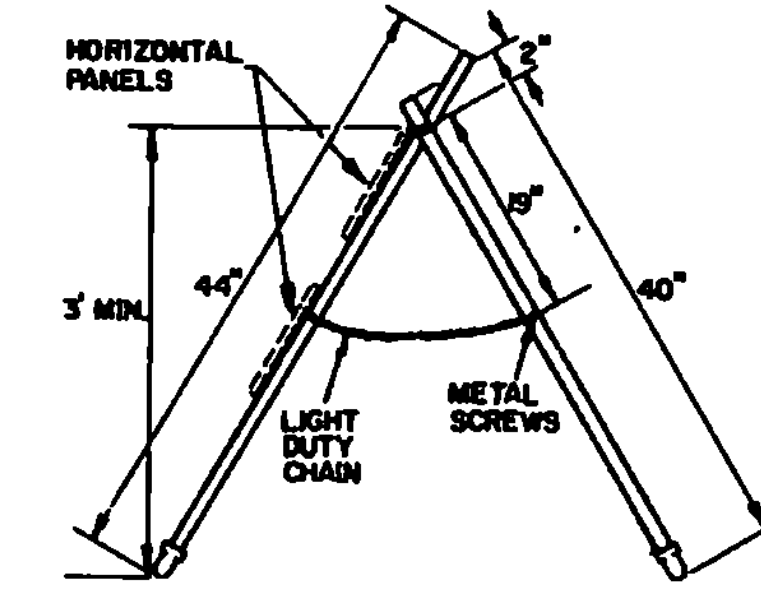
WARNING LIGHTS, IF REQUIRED BY THE PLANS OR RESIDENT ENGINEER, SHALL BE AFFIXED TO THE TOP OF THESE BREAKAWAY BARRICADES WITH A MINIMUM MOUNTING HEIGHT OF 36 INCHES TO THE BOTTOM OF THE LENS. A FLASHING WARNING LIGHT SHOULD BE PLACED ON BARRICADES USED SINGLY AND STEADY BURN WARNING LIGHTS SHOULD BE PLACED ON BARRICADES USED IN A SERIES FOR TRAFFIC CHANNELIZATION. THE WARNING LIGHTS SHALL CONFORM TO THE REQUIREMENTS FOUND IN THE M.U.T.C.O. WHEN THE INTEGRAL WARNING LIGHT UNIT IS USED, THE BATTERY PACK SHALL CONTAIN A LIGHT WEIGHT DRY CELL BATTERY AND THE UNIT SHALL BE RESTRAINED WITH A TETHER CABLE OR WIRE (12' LENGTH) SECURELY FASTENED TO THE BARRICADES SO AS TO AVOID HAVING THE UNIT BECOME A DANGEROUS FLYING OBJECT IF THE BARRICADE IS HIT.



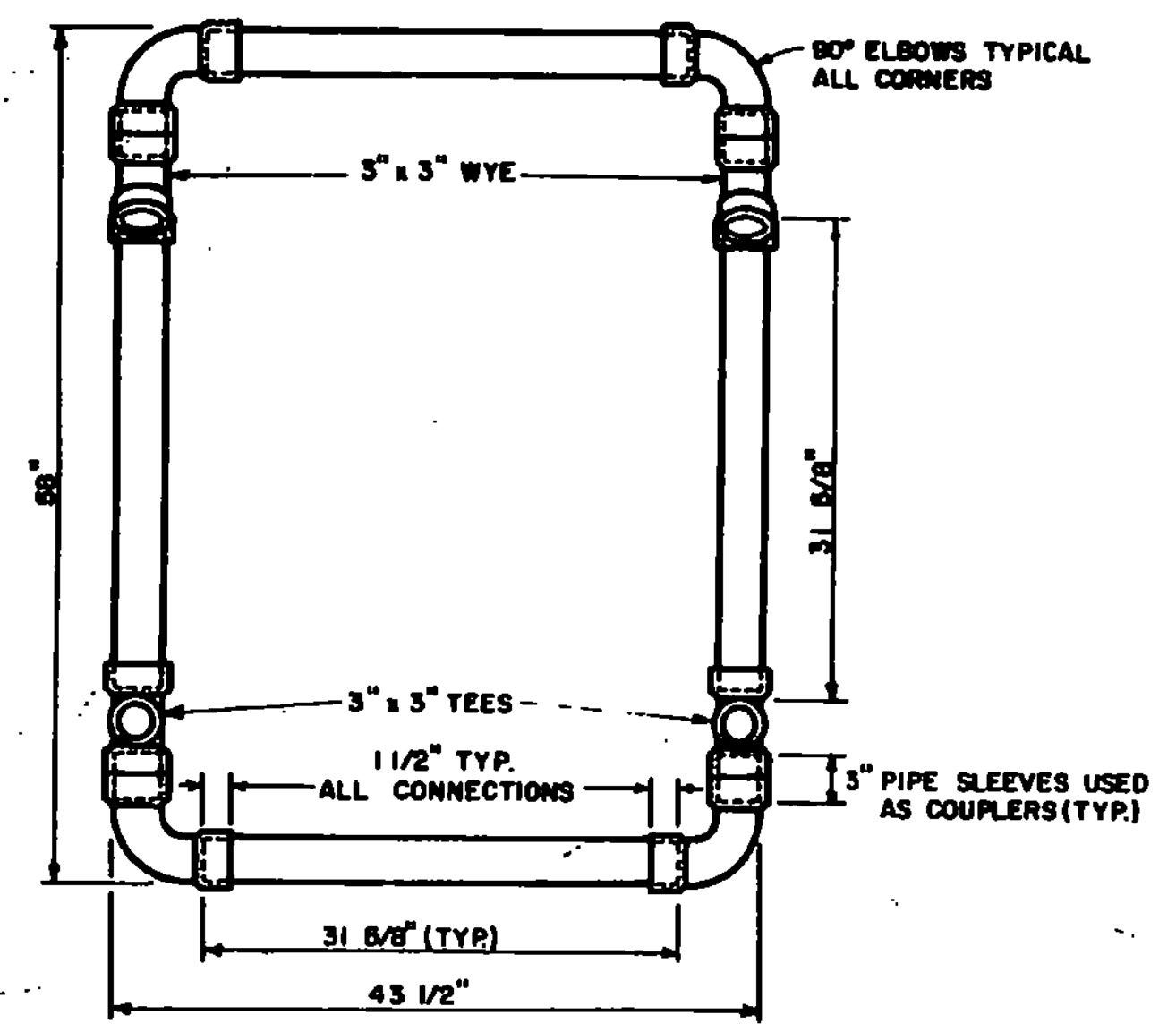
MATERIALS FOR TYPE I & II BARRICADES

20'-1" PVC
4'-1" PVC 90° ELBOWS
30'-1/2" ID THINWALL CONDUIT
36'-1/4" STEEL ROD
4'-1" WASHERS
24'-LIGHT DUTY CHAIN
4'-METAL SCREWS
2'-3/4" COTTER PINS

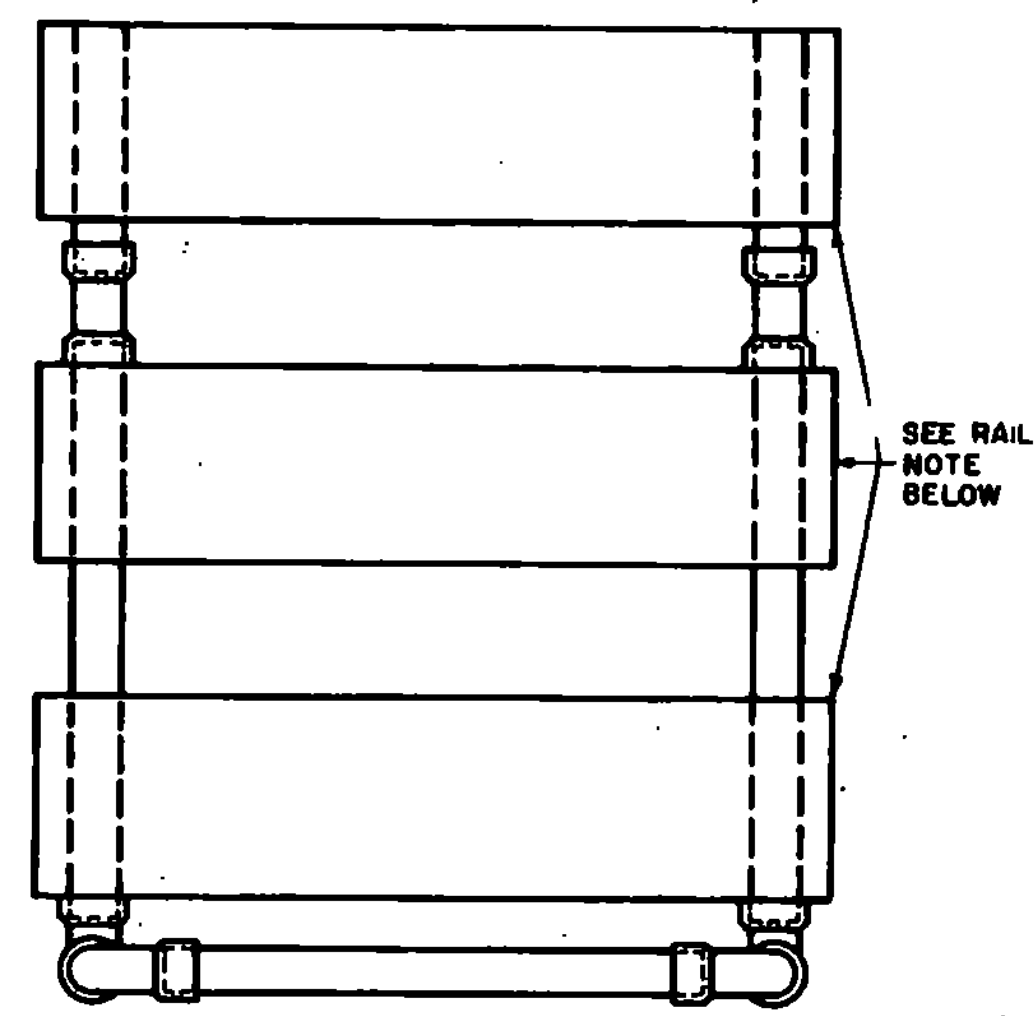
TYPE I BARRICADES SHALL CONSIST OF ONE HORIZONTAL PANEL.
TYPE II BARRICADES SHALL CONSIST OF AN ADDITIONAL HORIZONTAL PANEL MOUNTED BELOW THE OTHER.
SEE STD E-7 FOR USE REQUIREMENTS.



TYPE I & II BARRICADE DETAILS



TOP VIEW OF BASE



SEE STANDARD E-7 FOR RAIL DETAILS.
RAILS ATTACHED WITH 1" NO. 14 PAN HEAD METAL SCREW.

TRAFFIC SIGNS

BREAKAWAY BARRICADE DETAILS



STANDARD

E-7a

REVISIONS & CORRECTIONS
 JAN. 11, 1977 - REVISED ACCORDING TO FHWA REQUIREMENTS.
 JUNE 8, 1977 - MATERIALS LIST ADDED.
 APR. 8, 1982 - CEMENTING NOTE AND BARRICADES TYPE I & II ADDED.
 JUNE 13, 1984 - RAILS CHANGED FROM 9" TO 8".
 JAN. 3, 1985 - SAND AND WARNING LIGHT NOTE ADDED.
 FEB. 3, 1986 - UPDATED TO 1986 SPECIFICATIONS

APPROVED
 DATE Dec 30, 1976
E. H. Stinchey
 CHIEF ENGINEER
R. O. Munn
 ASST. CHIEF ENGINEER
Dora C. Orme
 HIGHWAY ENGINEER