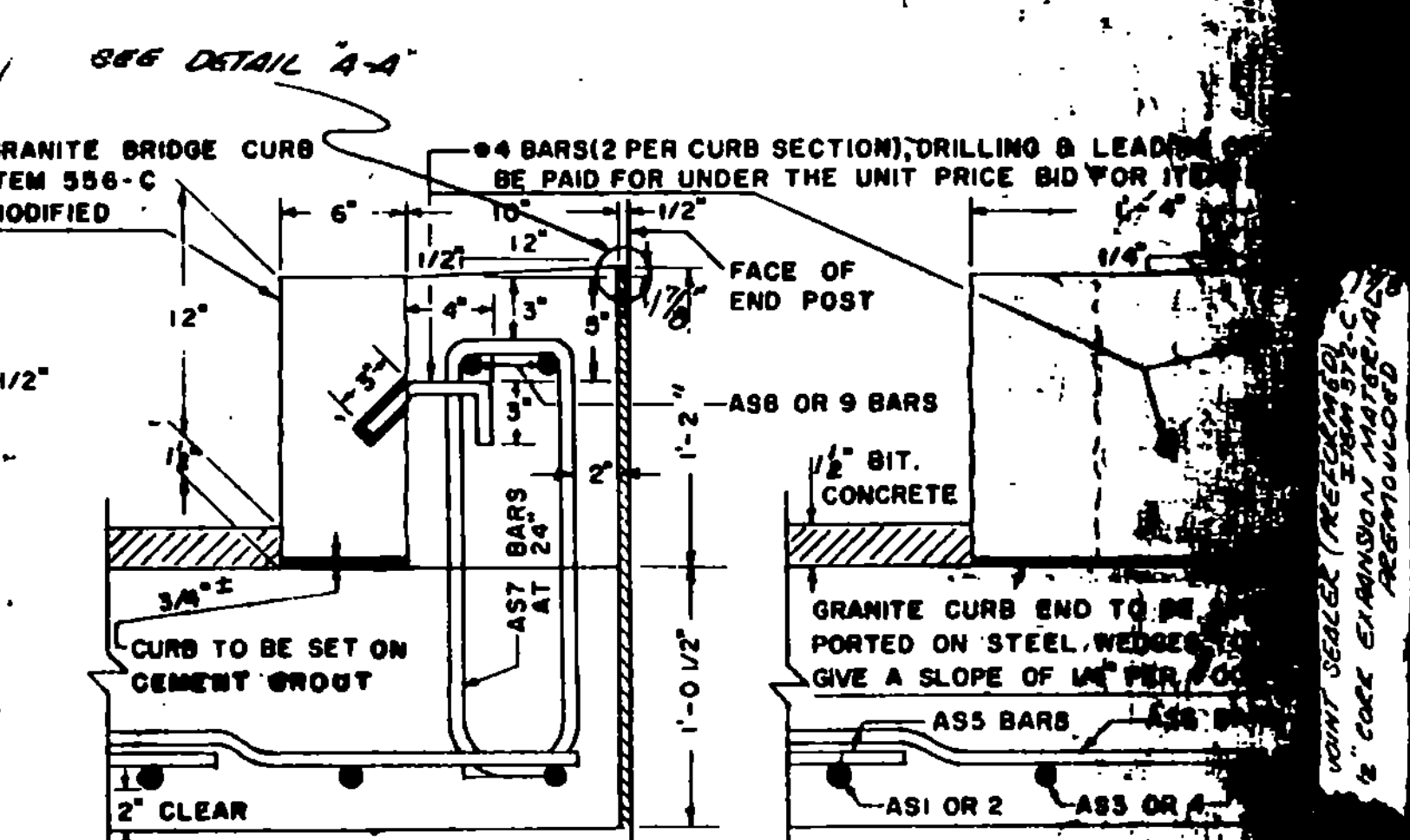
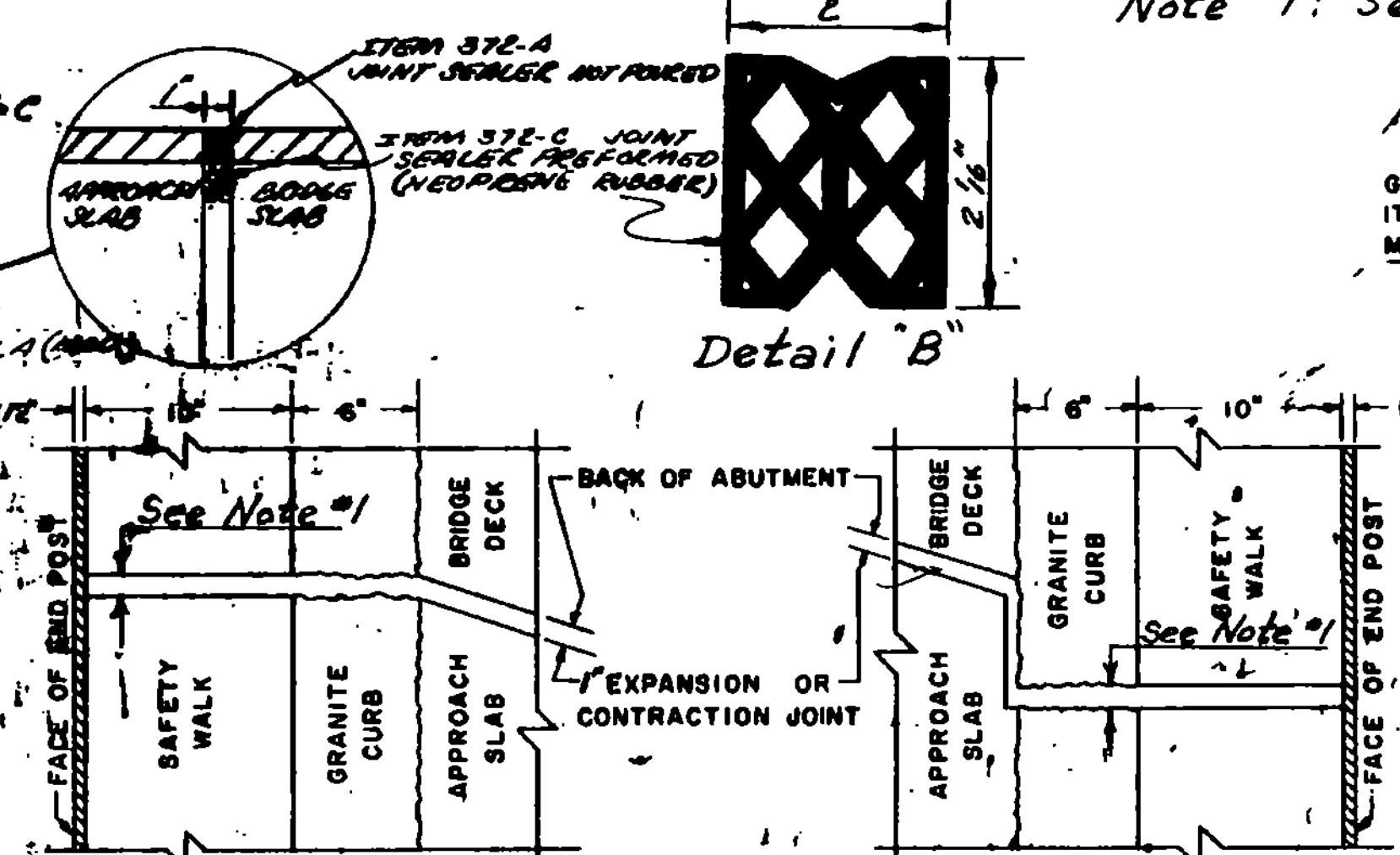
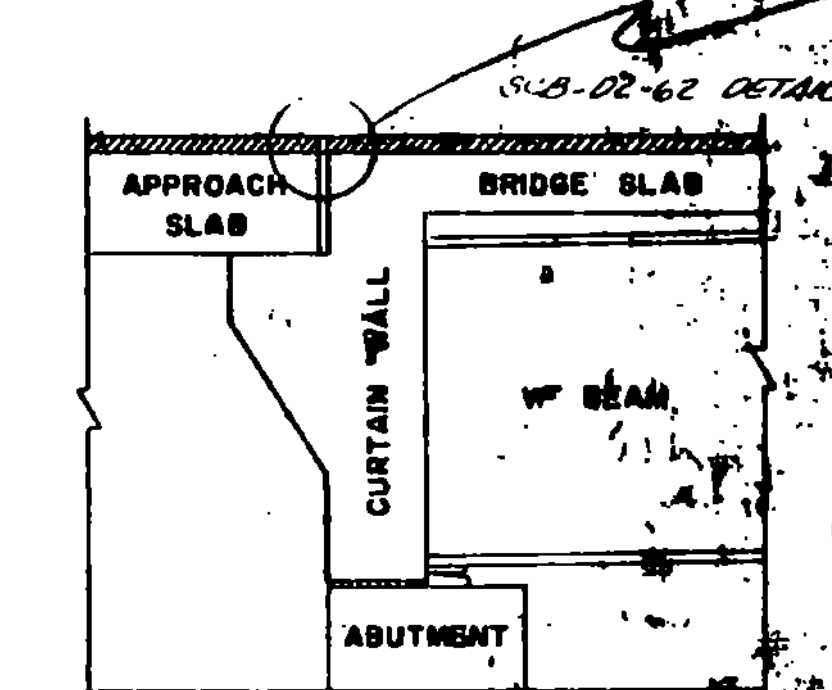
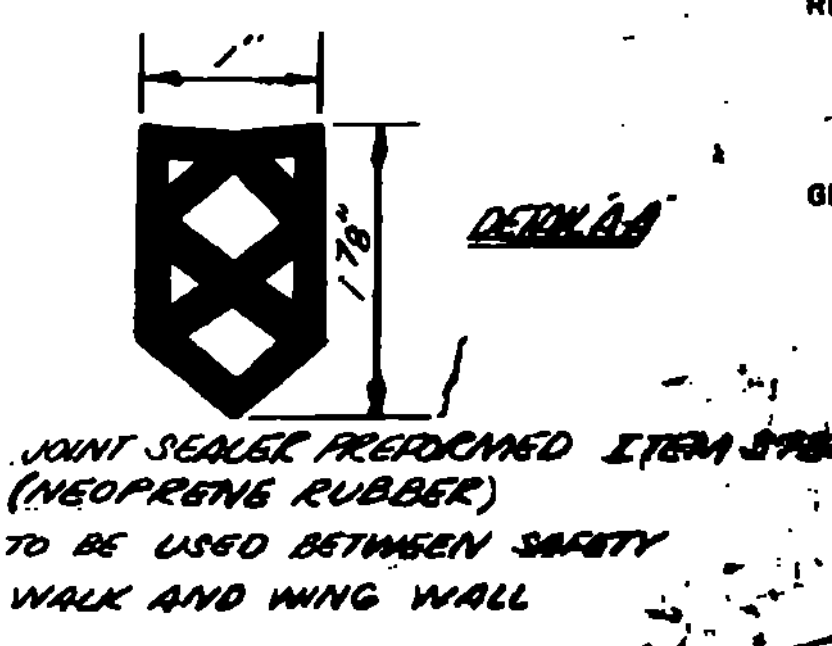
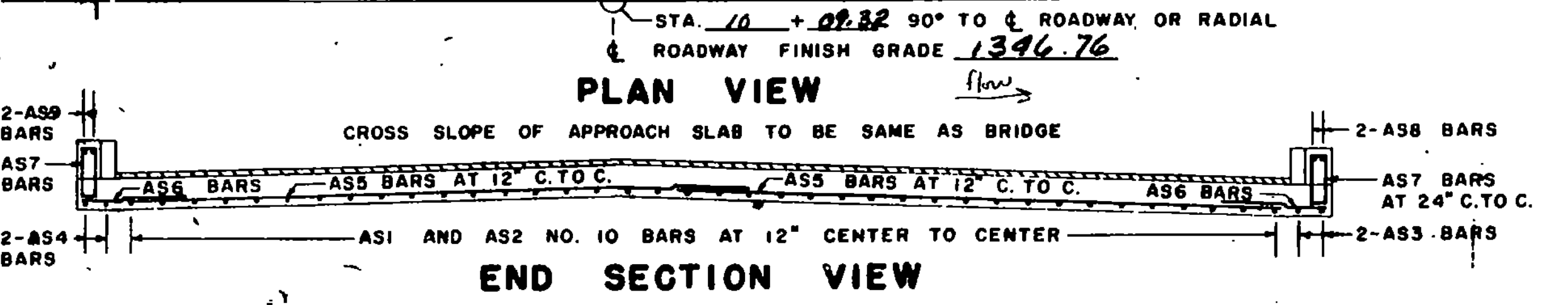
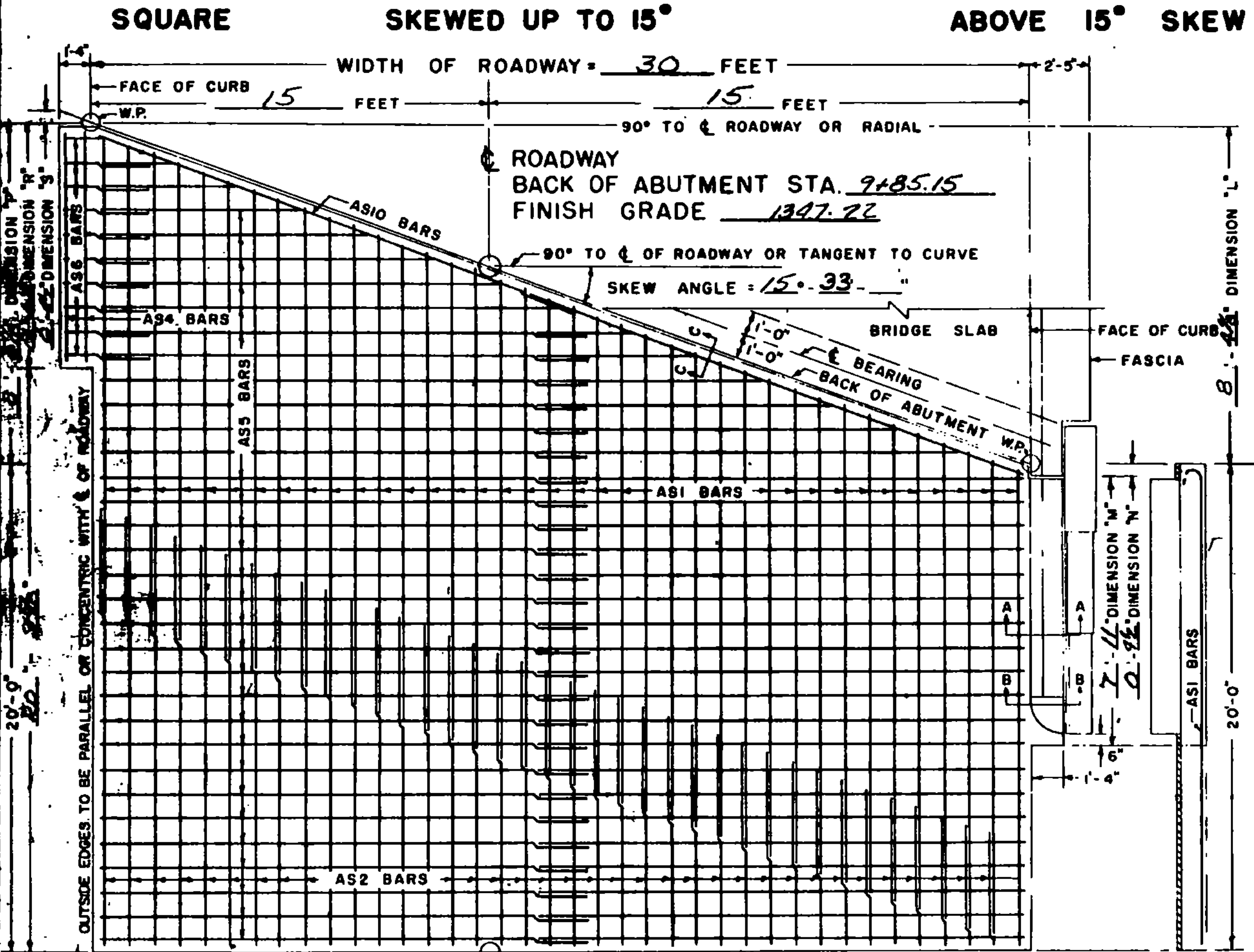


30' ROADWAY					38' ROADWAY					42' ROADWAY					44' ROADWAY					ROADWAY											
NO. PIECES	SIZE	LENGTH	MARK	REMARKS	NO. PIECES	SIZE	LENGTH	MARK	REMARKS	NO. PIECES	SIZE	LENGTH	MARK	REMARKS	NO. PIECES	SIZE	LENGTH	MARK	REMARKS	NO. PIECES	SIZE	LENGTH	MARK	REMARKS							
SQUARE OR SKEWED					SQUARE OR SKEWED					SQUARE OR SKEWED					SQUARE OR SKEWED					SQUARE OR SKEWED											
2	10	7'-5"	AS3	STR.	2	10		AS3	STR.	2	10		AS3	STR.	2	10		AS3	STR.	2	10		AS3	STR.	2	10		AS3	STR.		
2	10	7'-0"	AS4	STR.	2	10		AS4	STR.	2	10		AS4	STR.	2	10		AS4	STR.	2	10		AS4	STR.	2	10		AS4	STR.		
16	5	3'-6"	AS6	STR.	5	3'-6"		AS6	STR.	5	3'-6"		AS6	STR.	5	3'-6"		AS6	STR.	5	3'-6"		AS6	STR.	5	3'-6"		AS6	STR.		
10	5	5'-0"	AS7	S6	5	5'-0"		AS7	S6	5	5'-0"		AS7	S6	5	5'-0"		AS7	S6	5	5'-0"		AS7	S6	5	5'-0"		AS7	S6		
2	5	5'-9"	AS8	STR.	2	5		AS8	STR.	2	5		AS8	STR.	2	5		AS8	STR.	2	5		AS8	STR.	2	5		AS8	STR.		
2	5	5'-4"	AS9	STR.	2	5		AS9	STR.	2	5		AS9	STR.	2	5		AS9	STR.	2	5		AS9	STR.	2	5		AS9	STR.		
SQUARE					SQUARE					SQUARE					SQUARE					SQUARE											
30	10	20'-7"	AS1	I	38	10	20'-7"	AS1	I	42	10	20'-7"	AS1	I	44	10	20'-7"	AS1	I	10	20'-7"	AS1	I	10	20'-7"	AS1	I	10	20'-7"	AS1	I
20	5	29'-6"	AS5	STR.	40	5	19'-9"	AS5	STR.	40	5	21'-9"	AS5	STR.	40	5	22'-9"	AS5	STR.	5	22'-9"	AS5	STR.	5	22'-9"	AS5	STR.	5	22'-9"	AS5	STR.
SKEWED UP TO 15°					SKEWED UP TO 15°					SKEWED UP TO 15°					SKEWED UP TO 15°					SKEWED UP TO 15°											
30	10	Ave. AS1	I	I	38	10	Ave. AS1	I	I	42	10	Ave. AS1	I	I	44	10	Ave. AS1	I	I	10	Ave. AS1	I	I	10	Ave. AS1	I	I	10	Ave. AS1	I	I
5	29'-6"	AS5	STR.	2	5	19'-9"	AS5	STR.	3	5	21'-9"	AS5	STR.	3	5	22'-9"	AS5	STR.	3	5	22'-9"	AS5	STR.	3	5	22'-9"	AS5	STR.	3		
ALL SKEWED SPANS					ALL SKEWED SPANS					ALL SKEWED SPANS					ALL SKEWED SPANS					ALL SKEWED SPANS											
2	5	30'-8"	AS10	STR.	5			AS10	STR.	5			AS10	STR.	5			AS10	STR.	5			AS10	STR.	5			AS10	STR.		
ABOVE 15° SKEW					ABOVE 15° SKEW					ABOVE 15° SKEW					ABOVE 15° SKEW					ABOVE 15° SKEW											
30	10	24'-9" Ave	AS1	I	38	10	20'-7"	AS1	I	42	10	20'-7"	AS1	I	44	10	20'-7"	AS1	I	10	20'-7"	AS1	I	10	20'-7"	AS1	I	10	20'-7"	AS1	I
5	29'-6"	AS5	STR.	2	5	19'-9"	AS5	STR.	3	5	21'-9"	AS5	STR.	3	5	22'-9"	AS5	STR.	3	5	22'-9"	AS5	STR.	3	5	22'-9"	AS5	STR.	3		

REMARKS: ● ASI BAR "B" DIMENSION VARIES FROM 19'-6" TO 27'-10" ● 20 + DIMENSION (P+L) ÷ 4 (IN FEET) + NUMBER OF PIECES. CUT BARS IN THE FIELD USING CUT OFF PIPES OPPOSITE HALF OF SLAB. ● 40 + DIMENSION (P+L) ÷ 2 (IN FEET) + NUMBER OF PIECES. CUT BARS IN THE FIELD USING CUT OFF PIPES ON OPPOSITE HALF OF SLAB. ● THE LENGTH OF AS2 BARS VARIES FROM TO THE AS2 BARS MAY BE DIVIDED INTO TWO OR MORE PIECES, AS MAY BE NECESSARY, TO LIMIT THE MAXIMUM BAR LENGTH TO 30 FEET. THE LOCATION OF SPLICES IS LEFT TO THE OPTION OF THE DESIGNER. THE NO. PIECES SHOWN ARE FOR CONDITION 1 (FOR CONDITION 2, B, 3, SEE REMF. SHEET).

GENERAL NOTES: ALL REINFORCING STEEL SHALL BE DETAILED ON THE REINFORCING STEEL SCHEDULE. WHEN A BAR LENGTH VARIES IN INCREMENTS EACH BAR MUST BE DETAIL SPLICES SHALL BE 2'-1" FOR NUMBER 5 BARS, AND 4'-3" FOR NUMBER 10 BARS. ALL WORK AND MATERIALS SHALL CONFORM TO THE STATE OF VERMONT, DEPARTMENT OF HIGHWAYS, STANDARD SPECIFICATIONS FOR HIGHWAY AND BRIDGE CONSTRUCTION DATED JANUARY 1956, AND THE A.A.S.H.O. SPECIFICATIONS DATED 1962. DESIGNED FOR HIGHWAY.

Note #1: See Note #1, Br. 5 of 11



DETAILS OF REINFORCING BARS				REINFORCING STEEL				QUANTITY COMPUTATION						
TYPE I		TYPE S6 C		A	B	C	A X B X C	W	Z	T	DIMENSION			
BAR NO.	PIECES	LENGTH	WEIGHT PER FT.	WEIGHT IN LBS.	BAR NO.	PIECES	LENGTH	WEIGHT PER FT.	WEIGHT IN LBS.	BAR NO.	PIECES	LENGTH	WEIGHT PER FT.	WEIGHT IN LBS.
AS1	30	24'-9" Ave	4.303	3194.98	AS6	10	3'-6"	1.043	58.41	W	30	Z	24.17	T
AS2	25	29'-6"	1.043	769.25	AS7	10	5'-0"	1.043	52.16	CONCRETE CLASS B	30	24.17	0.0386	28.92
AS3	2	7'-5"	4.303	62.81	AS8	2	5'-9"	1.043	11.99	GRANITE BRIDGE CURB	2(T + 0'-5")	LINEAR FEET	2(2.73 + 0.26)	1.0
AS4	2	7'-0"	4.303	60.24	AS9	2	5'-4"	1.043	11.13	BAR LENGTHS: AS3 BARS = DIMENSION "M" - 0'-8"				
AS5	25	29'-6"	1.043	769.25	AS10	2	30'-8"	1.043	63.97	AS4 BARS = DIMENSION "R" - 0'-6"				
AS6	10	3'-6"	1.043	58.41	TOTAL WEIGHT = 4285.89				AS6 BARS = 3'-6"					
AS7	10	5'-0"	1.043	52.16					AS7 BARS = 5'-0"					
AS8	2	5'-9"	1.043	11.99					AS8 BARS = DIMENSION "M" - 2'-2"					
AS9	2	5'-4"	1.043	11.13					AS9 BARS = DIMENSION "R" - 2'-2"					
AS10	2	30'-8"	1.043	63.97					F-DECK (22) S, BR # 33					
AS11	2	30'-8"	1.043	63.97					THIS SHEET FOR INFORMATION ONLY					

REVISIONS AND CORRECTIONS
 Revised Joint Filler Item 323 - 6-21-63 M

APPROVED
 DRAWN BY: R.S. HAUPT NOV. 1960
 TRACED BY: R.S. HAUPT NOV. 1960
 CHECKED BY: A.H. SMALLLEY NOV. 1960

Recommended For Approval
 Bridge Engineer Date 11/17/62
 Asst. Chief Engineer Date 11/17/62
 Chief

DETAILS OF APPROACH SLAB NO. 2
 FOR 30 FOOT BRIDGE
 (WIDTH)
 TO BE USED FOR BRIDGE AT STATION 10+09.35
 LOCATION BRANCH BROOK

STATE OF VERMONT
 DEPARTMENT OF HIGHWAYS
 STANDARD STRUCTURE
 SB-AS-62
 SHEET 21 OF 40

TOWN OF MT. HOLLY
 ROUTE NO. 10
 BRANCH BROOK
 LOG STA. 5+50