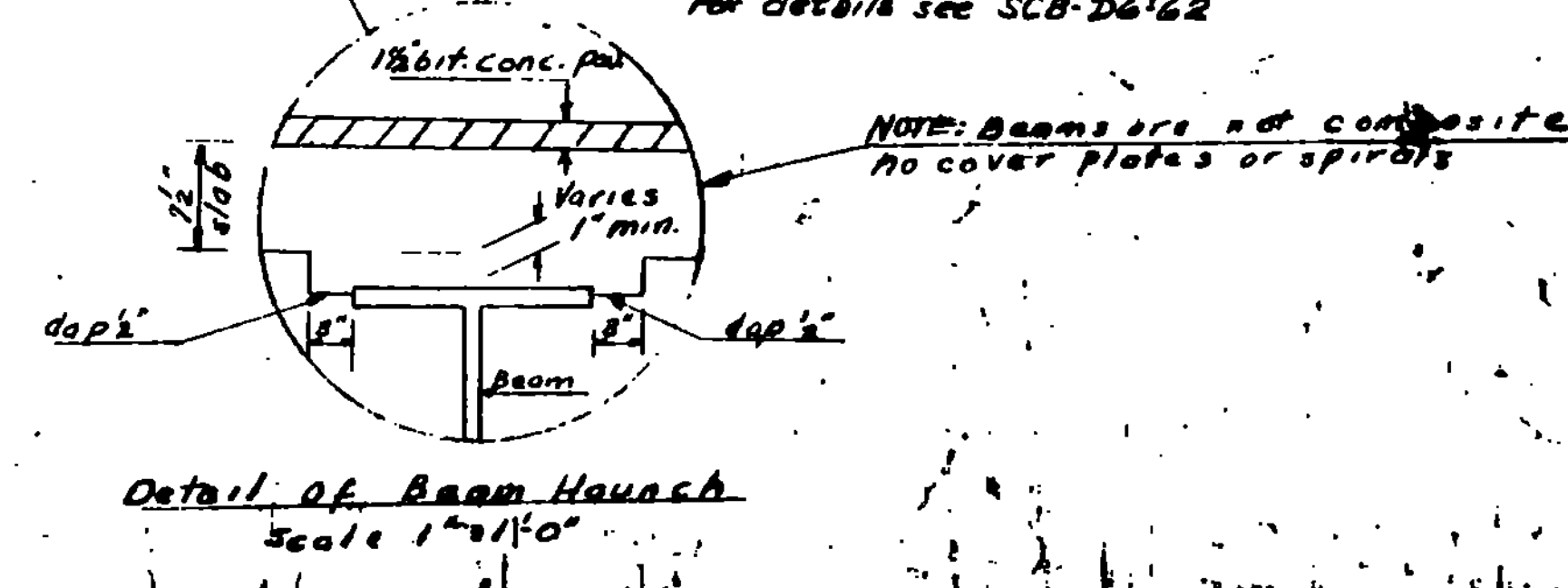
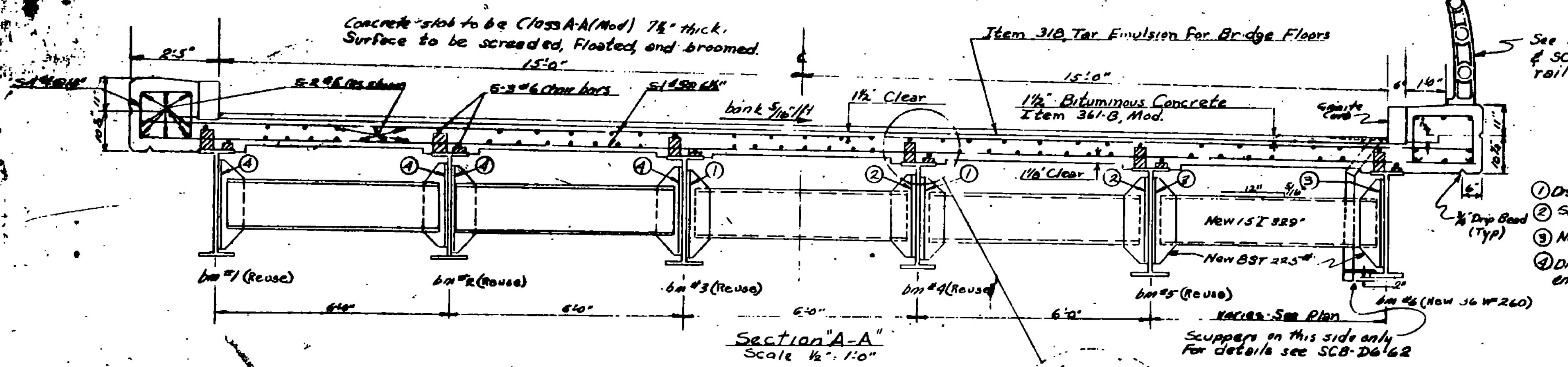


List of Bridge Sheets

Br. 1 of 11 Superstructure Details
 Br. 2 of 11 Earthwork and Bridge Quantity Sheet
 Br. 3 of 11 Details of Abutment #1
 Br. 4 of 11 Details of Abutment #2
 Br. 5 of 11 Approach Slab #1
 Br. 6 of 11 Approach Slab #2
 Br. 7 of 11 Reinforcing Steel Schedule
 Br. 8 of 11 Channel Sections

Standard Sheets
 SCB-30-62
 SCB-D1-62
 SCB-D2-62 Detail A, C
 SCB-D4-62
 SCB-D6-62 Detail A, B, C
 SCB-D8-62 Detail A, B
 SCB-D9-62 Detail A
 SB-56-62 Sheets 1 & 2 of 2

- General Notes**
- Beginning and End Stationing of bridge is to conform to back of old abutments.
 - All existing diaphragms of present structure are to be removed and reconnected by field welding as indicated in notes on Section A-A. Required new diaphragms are to be welded to the structure at the quarter points of the span. Resetting of existing structural steel is to be included in the unit price bid for Item 404 Structural Steel at Sta. 9+43 (Modified). Existing diaphragm connections are riveted.
 - For all superstructure details not shown or otherwise indicated see Standard Sheets SCB-30-62, SCB-D4-62. For quantities see Bridge Quantity Sheet.
 - For details of bearing plate for new 36 WF 260 see Standard Sheets SCB-D8-62 and SCB-D9-62. New swedge bolts are to be furnished for all existing beam bearings. All existing bearings are to be reused. Note extra long swedge bolts.
 - The present slab structural steel is to be removed under Item 404. Removal of Present Superstructure. All existing structural steel is to be incorporated in the new structure. This steel is to be cleaned and painted under Item 5200 Hand Cleaning & Painting of Structural Steel.
 - For additional General Notes see Standard Sheet SCB-D1-62.



F-DECK (22)S, BR. #33
 THIS SHEET FOR INFORMATION ONLY

STATE OF VERMONT
 DEPARTMENT OF HIGHWAYS

TOWN OF Mt. Holly - Ludlow
 ROUTE No. VT. 103 LOG STA. 4+...
 SUPERSTRUCTURE
 (Branch Brook)
 SCALE 1/2" = 1'-0"
 SURVEYED BY A. B. WARD
 DRAWN BY J. E. ...
 PROJECT ...

SHEET # 40