

REVISIONS AND CORRECTIONS
Revised Joint Filler Item 323 - 6-21-63 M

APPROVED
DRAWN BY: R.S. NAUPT NOV. 1960
TRACED BY: R.S. NAUPT NOV. 1960
CHECKED BY: A.H. SMALLEY NOV. 1960

Recommended For Approval
11/13/64 12/1/62
Bridge Engineer Date
Recommended For Approval
Asst. Chief Engineer Date
Approved By

DETAILS OF APPROACH SLAB #2
FOR 30.34 FOOT BRIDGE
(WIDTH)
TO BE USED FOR BRIDGE AT STATION 28+50
LOCATION BRANCH BROOK

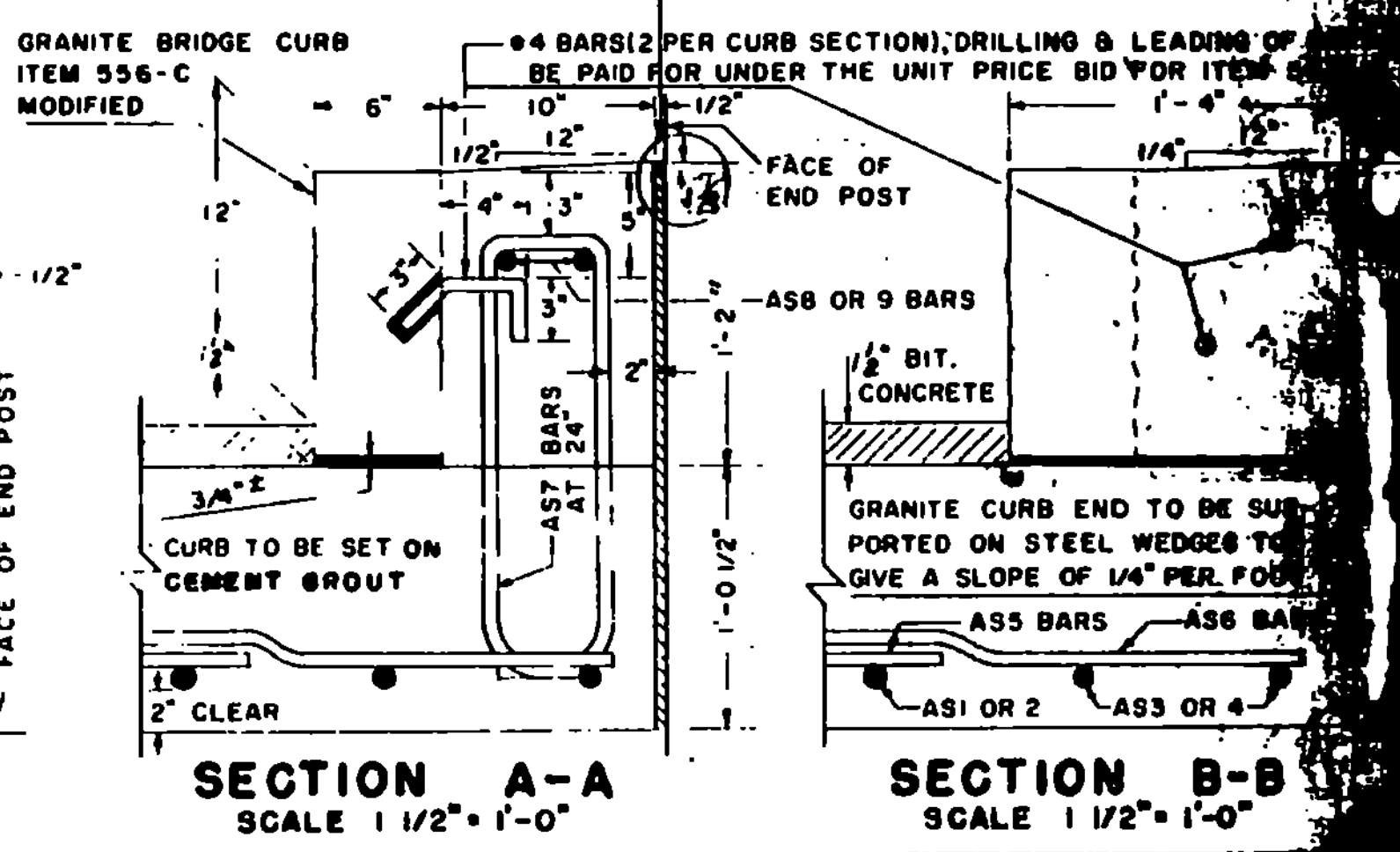
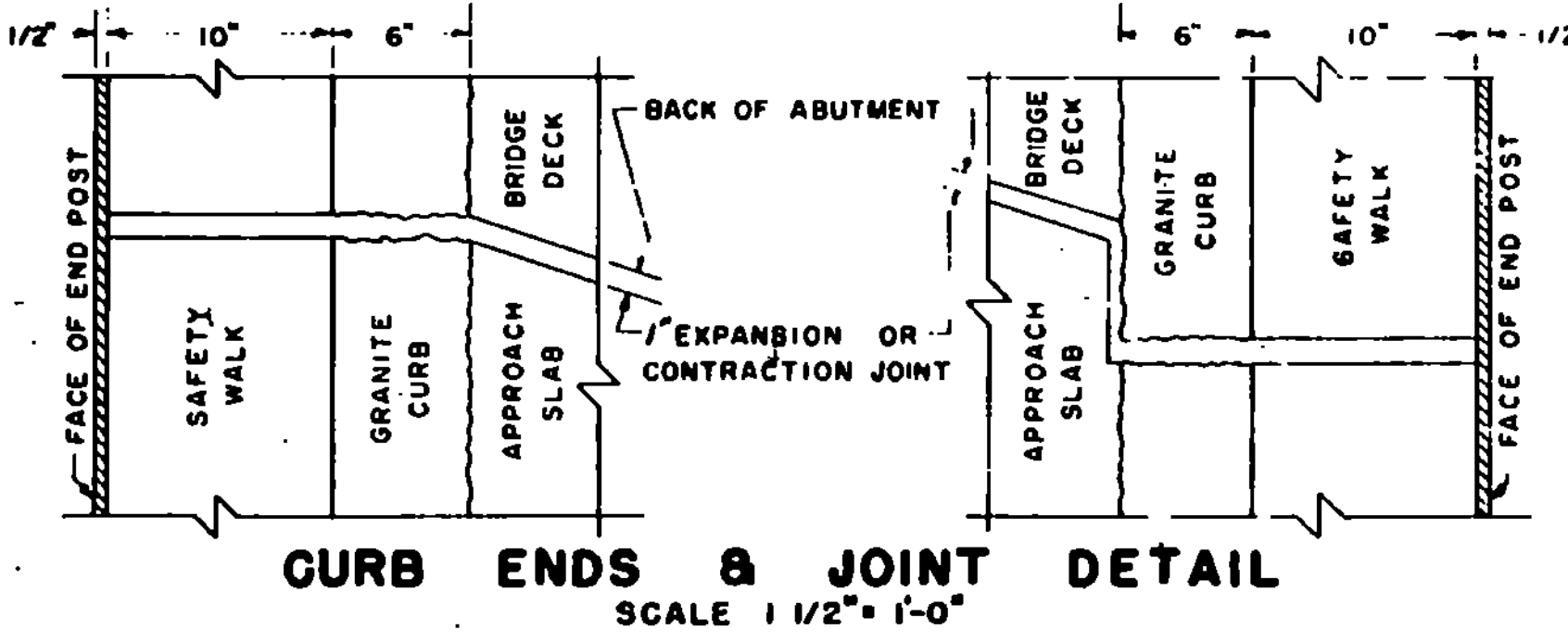
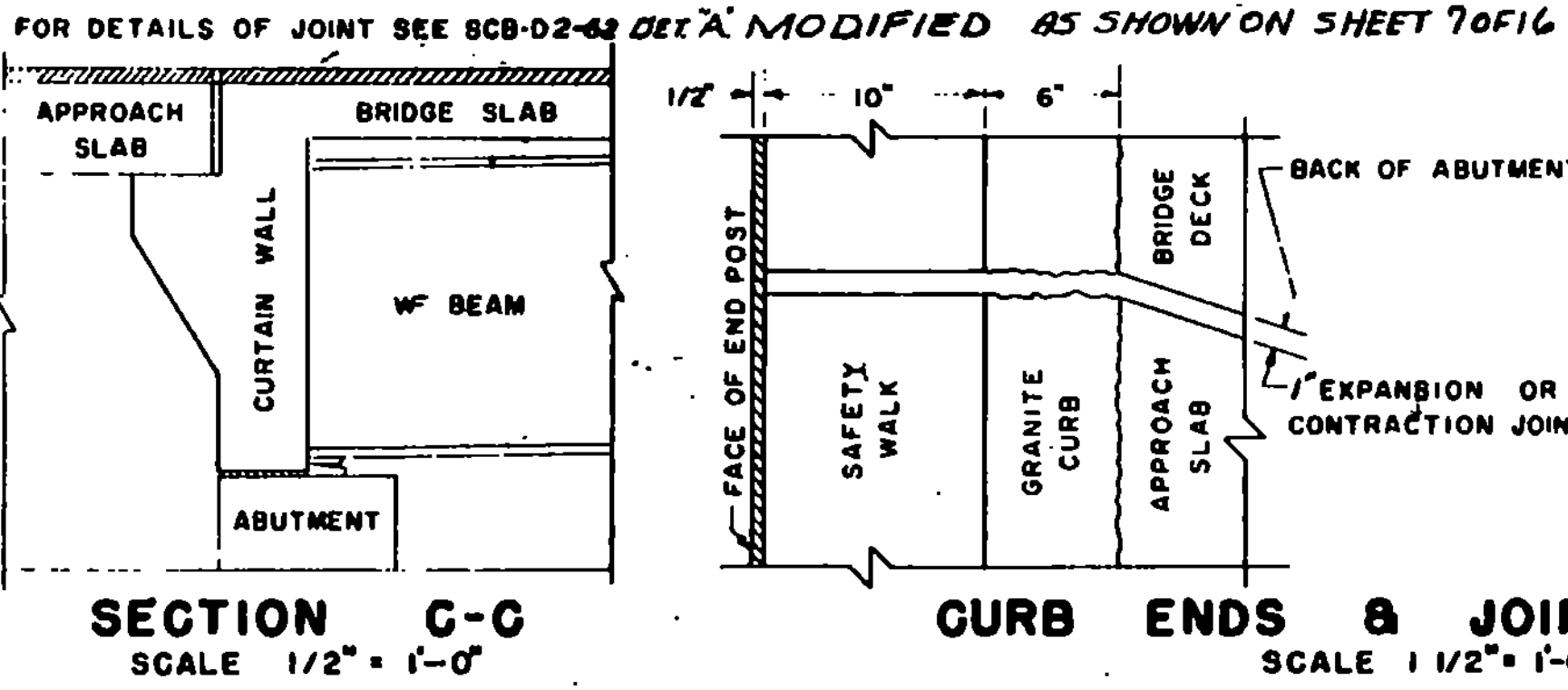
STATE OF VERMONT
DEPARTMENT OF HIGHWAYS
STANDARD STRUCTURE
SB-AS-60
SHEET 18 OF 40

TOWN OF MT. HOLLY, VT.
ROUTE NO. VT 1001
LOG STA. 1+30
SCALE AS NOTED
DESIGNED BY GYK CHESTNUT
1960 101 5025

34.30' ROADWAY					38' ROADWAY					42' ROADWAY					44' ROADWAY					ROADWAY										
NO.	PIECES	SIZE	LENGTH	MARK	TYPE	REMARKS	NO.	PIECES	SIZE	LENGTH	MARK	TYPE	REMARKS	NO.	PIECES	SIZE	LENGTH	MARK	TYPE	REMARKS	NO.	PIECES	SIZE	LENGTH	MARK	TYPE	REMARKS			
2	10	17-0		AS3	STR.		2	10		AS3	STR.		2	10		AS3	STR.		2	10		AS3	STR.		2	10		AS3	STR.	
2	10	17-0		AS4	STR.		2	10		AS4	STR.		2	10		AS4	STR.		2	10		AS4	STR.		2	10		AS4	STR.	
30	5	3-6		AS6	STR.		5	3-6		AS6	STR.		5	3-6		AS6	STR.		5	3-6		AS6	STR.		5	3-6		AS6	STR.	
20	5	3-0		AS7	STR.		5	3-0		AS7	STR.		5	3-0		AS7	STR.		5	3-0		AS7	STR.		5	3-0		AS7	STR.	
2	5	15-4		AS8	STR.		2	5	15-4		AS8	STR.		2	5	15-4		AS8	STR.		2	5	15-4		2	5	15-4		AS8	STR.
2	5	15-4		AS9	STR.		2	5	15-4		AS9	STR.		2	5	15-4		AS9	STR.		2	5	15-4		2	5	15-4		AS9	STR.
SQUARE					SQUARE					SQUARE					SQUARE					SQUARE										
30	10	20-7		AS1	STR.		38	10	20-7		AS1	STR.		42	10	20-7		AS1	STR.		44	10	20-7		AS1	STR.		AS1	STR.	
20	5	19-9		AS5	STR.		40	5	19-9		AS5	STR.		40	5	21-9		AS5	STR.		40	5	22-9		AS5	STR.		AS5	STR.	
SKEWED UP TO 15°					SKEWED UP TO 15°					SKEWED UP TO 15°					SKEWED UP TO 15°					SKEWED UP TO 15°										
30	10	AVE.	AS1	STR.	1		38	10	AVE.	AS1	STR.	1		42	10	AVE.	AS1	STR.	1		44	10	AVE.	AS1	STR.	1		AS1	STR.	
5	29-6		AS5	STR.	2		5	19-9		AS5	STR.	3		5	21-9		AS5	STR.	3		5	22-9		AS5	STR.	3		AS5	STR.	
ALL SKEWED SPANS					ALL SKEWED SPANS					ALL SKEWED SPANS					ALL SKEWED SPANS					ALL SKEWED SPANS										
2	5		AS10	STR.			5			AS10	STR.			5			AS10	STR.			5				AS10	STR.			AS10	STR.
ABOVE 15° SKEW					ABOVE 15° SKEW					ABOVE 15° SKEW					ABOVE 15° SKEW					ABOVE 15° SKEW										
30	10	20-7		AS1	STR.		38	10	20-7		AS1	STR.		42	10	20-7		AS1	STR.		44	10	20-7		AS1	STR.		AS1	STR.	
29	10	AVE.	AS2	STR.	4		37	10	AVE.	AS2	STR.	4		41	10	AVE.	AS2	STR.	4		43	10	AVE.	AS2	STR.	4		AS2	STR.	
5	29-6		AS5	STR.	2		5	19-9		AS5	STR.	3		5	21-9		AS5	STR.	3		5	22-9		AS5	STR.	3		AS5	STR.	

REMARKS: ● ASI BAR "B" DIMENSION VARIES FROM 19'-6" TO 20'-0" + DIMENSION (P+L) ÷ 4 (IN FEET) × NUMBER OF PIECES. CUT BARS IN THE FIELD USING CUT OFF PIECES ON OPPOSITE HALF OF SLAB. ● 40 + DIMENSION (P+L) ÷ 2 (IN FEET) × NUMBER OF PIECES. CUT BARS IN THE FIELD USING CUT OFF PIECES ON OPPOSITE HALF OF SLAB. ● THE LENGTH OF AS2 BARS VARIES FROM 19'-9" TO 21'-9". THE AS2 BARS MAY BE DIVIDED INTO TWO OR MORE PIECES, AS MAY BE NECESSARY, TO LIMIT THE MAXIMUM BAR LENGTH TO 30 FEET. THE LOCATION OF SPLICES IS LEFT TO THE OPTION OF THE DESIGNER. THE NO. PIECES SHOWN ARE FOR CONDITION 1. (FOR CONDITION 2 & 3. SEE REINF. SCHEDULE.)

GENERAL NOTES: ALL REINFORCING STEEL SHALL BE DETAILED ON THE REINFORCING STEEL SCHEDULE. WHEN A BAR LENGTH VARIES IN INCREMENTS EACH BAR MUST BE DETAIL SPLICES SHALL BE 2'-1" FOR NUMBER 5 BARS, AND 4'-3" FOR NUMBER 10 BARS. ALL WORK AND MATERIALS SHALL CONFORM TO THE STATE OF VERMONT, DEPARTMENT OF HIGHWAYS, STANDARD SPECIFICATIONS FOR HIGHWAY AND BRIDGE CONSTRUCTION DATED JANUARY 1956, AND THE A.A.S.H.O. SPECIFICATIONS DATED 1962. DESIGNED FOR MTD.



DETAILS OF REINFORCING BARS					REINFORCING STEEL					QUANTITY COMPUTATION														
TYPE I		TYPE S6 C			A		B		C		A X B X C		W = WIDTH OF ROADWAY			Z = 20 + DIMENSION "P" + L			T = DIMENSION "T"					
A	J	A	B	C	BAR NO.	NO. PIECES	LENGTH	WEIGHT PER FT.	WEIGHT IN LBS.	W	Z	T	BITUMINOUS CONCRETE	TAR EMULSION	CONCRETE CLASS B	GRANITE BRIDGE CURB	BAR LENGTHS	AS3	AS4	AS6	AS7	AS8	AS9	
1'-1"	0'-9"	0'-6"	1'-9"	0'-6"	AS1	30	20'-7"	4.303	1290.90	30.34	20	17.5	31.38	27.30	2.730	36	AS3 BARS = DIMENSION "M" - 0'-6"							
19'-6" OR VARIES		1'-9"	0'-6"	1'-9"	AS2	2	17-0	4.303	146.30				W x Z x 0.0092 = 31.38 x 20 x 0.0092 = 5.6 TONS	W x Z x 0.0444 = 31.38 x 20 x 0.0444 = 27.30 GALLONS	W x Z x 0.0386 + T x 0.1029 + (T - 1.8333) x 0.0733 = 31.38 x 0.0386 + 17.5 x 0.1029 + (17.5 - 1.8333) x 0.0733 = 2.730 CUBIC YARDS	2(T + 0'-3") x LINEAR FEET = 2(17.5 + 0.25) x 1 = 36 LINEAR FEET	AS4 BARS = DIMENSION "R" - 0'-6"							
		0'-6"	1'-9"	0'-6"	AS3	2	17-0	1.043	121.42				AS6 BARS = 3'-6"				AS7 BARS = 5'-0"							
		1'-9"	0'-6"	1'-9"	AS4	2	17-0	1.043	121.42								AS8 BARS = DIMENSION "M" - 2'-2"							
		0'-6"	1'-9"	0'-6"	AS5	20	15-4	1.043	31.98								AS9 BARS = DIMENSION "R" - 2'-2"							
		0'-6"	1'-9"	0'-6"	AS6	2	15-4	1.043	31.98															
					AS7	2	15-4	1.043	31.98															
					AS8	2	15-4	1.043	31.98															
					AS9	2	15-4	1.043	31.98															
					AS10	2	15-4	1.043	31.98															
					TOTAL				4301.94															

F-DECK (22)S, BR. #99
THIS SHEET FOR INFORMATION ONLY
Sheet Revised 2-71