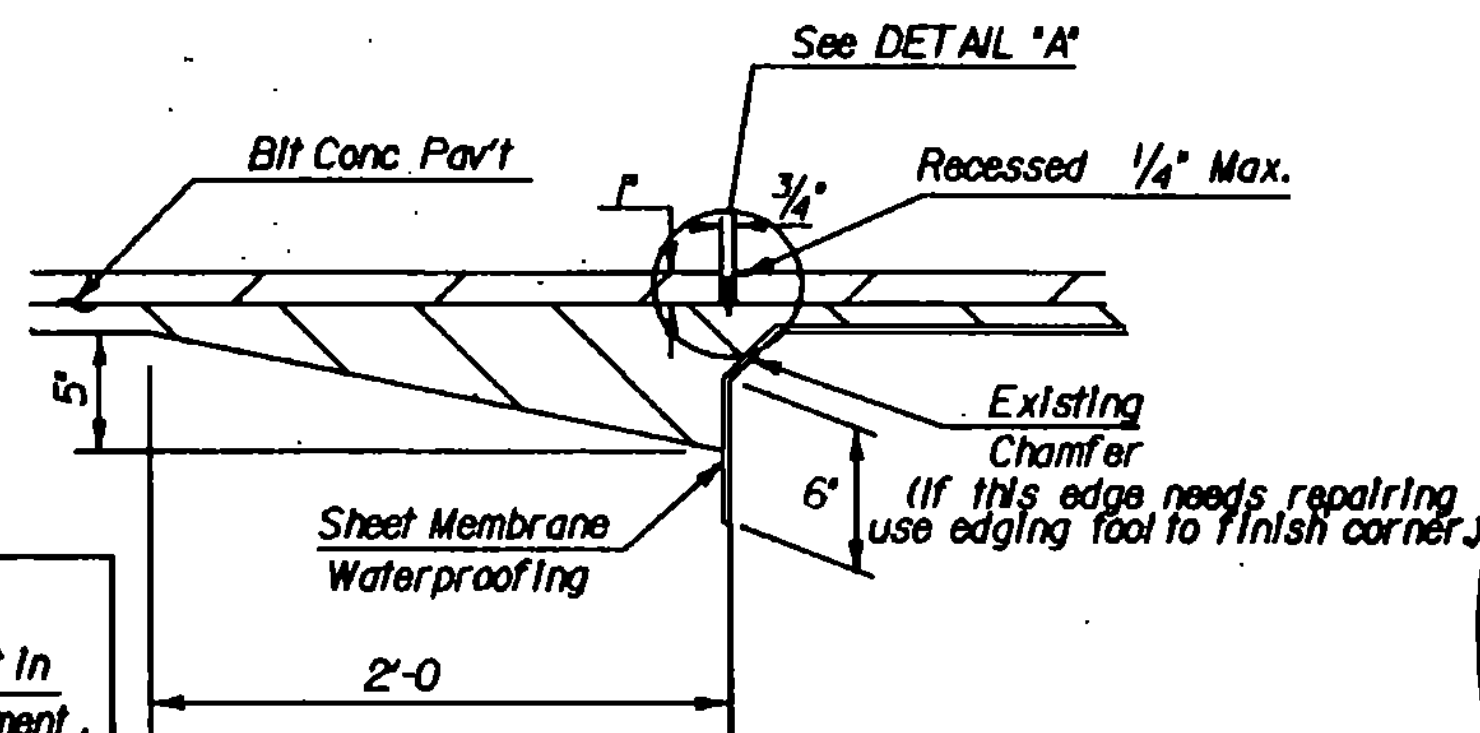


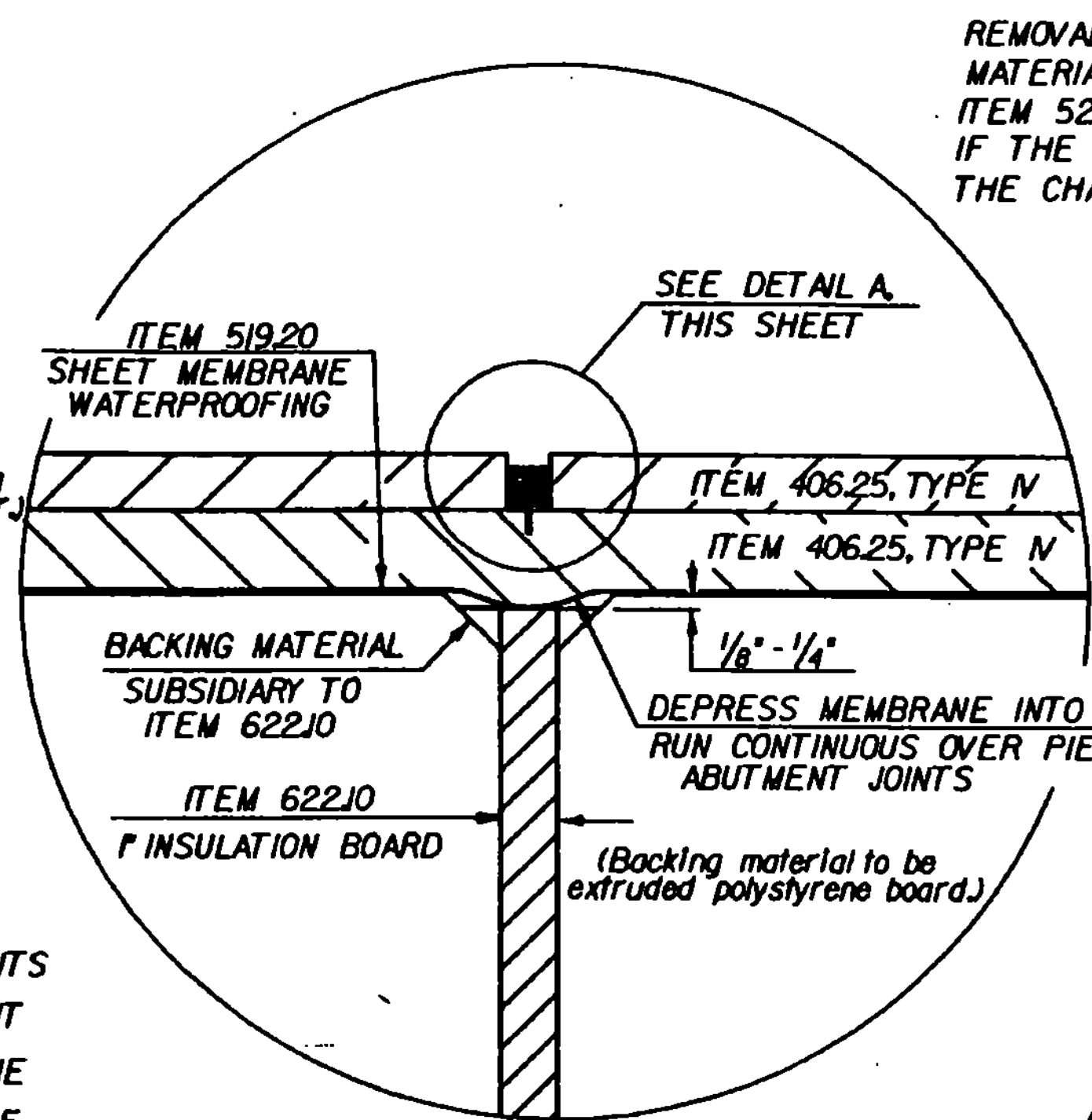
DETAIL A
Scale 1" = 1'

Note: Clean sawing dust and other foreign material from the sawed joint before applying the Hot Poured Joint Sealer. See VT.SPEC. 524.05



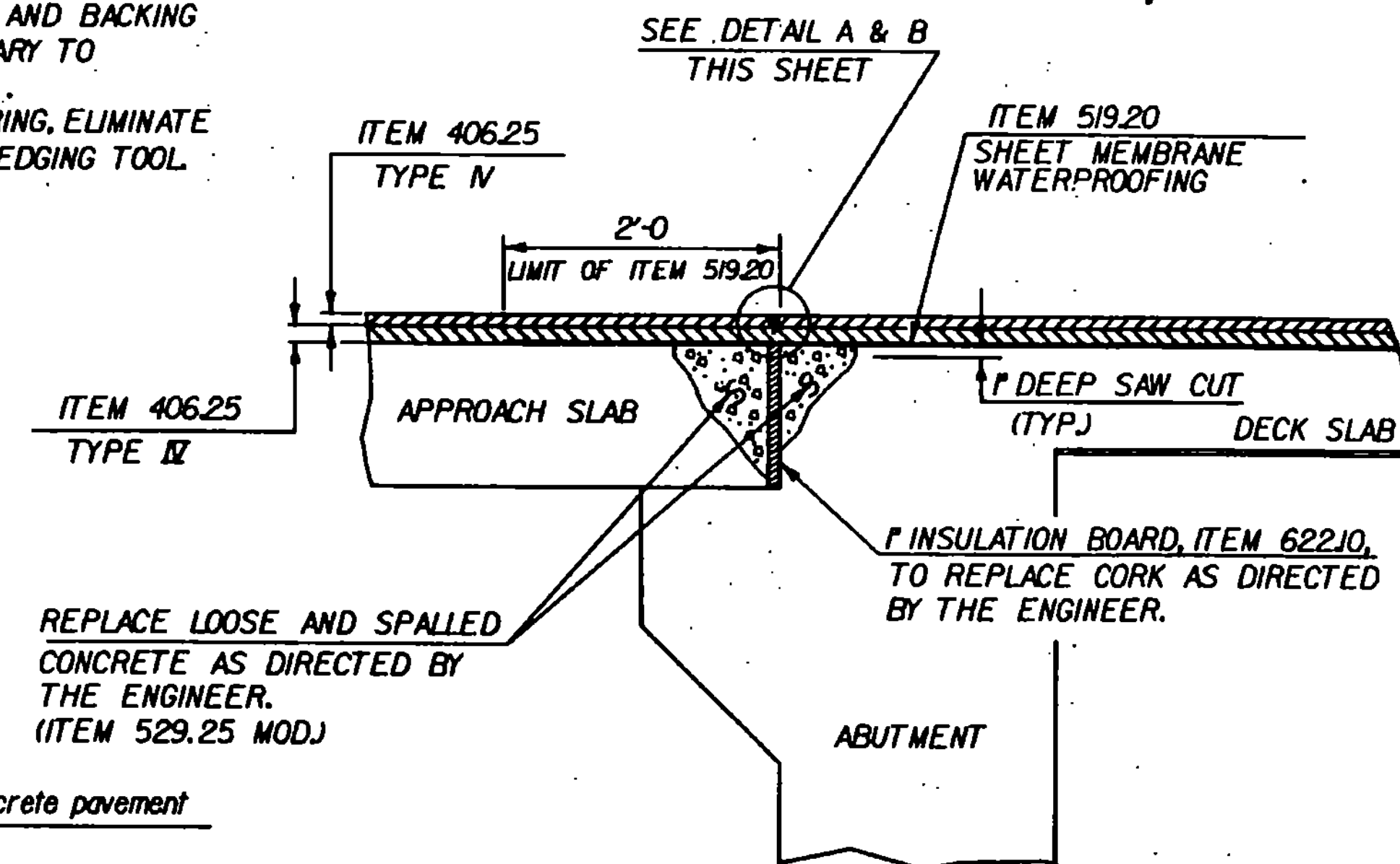
JOINT SEALER DETAIL WITHOUT SURFACE APPROACH SLAB
Scale 1/2" = 1'-0"

MEMBRANE WILL BE DEPRESSED INTO DECK JOINTS AND RUN CONTINUOUS OVER PIER AND ABUTMENT JOINTS. ON BRIDGES WITH APPROACH SLABS, THE MEMBRANE WILL EXTEND TWO (2) FEET ONTO THE SLAB FROM THE END OF THE BRIDGE.

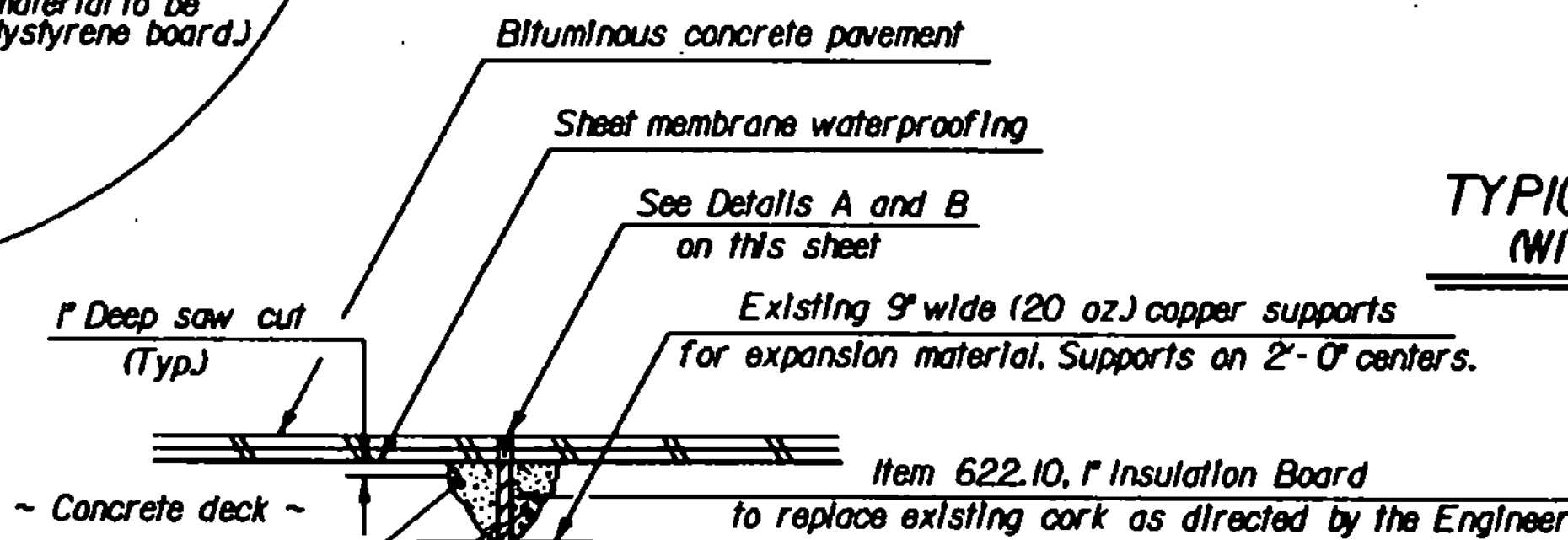


DETAIL B
NTS

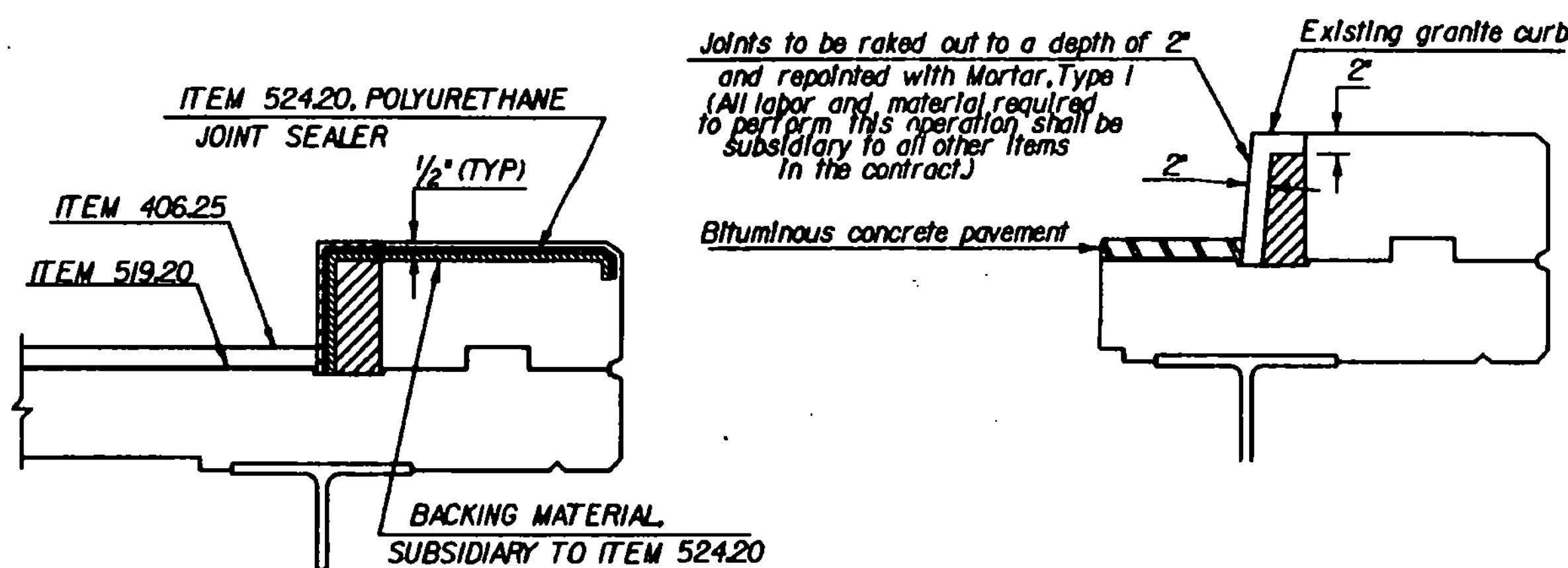
REMOVAL OF EXISTING JOINT AND BACKING MATERIAL SHALL BE SUBSIDIARY TO ITEM 524.15 OR ITEM 622.10. IF THE JOINT NEEDS REPAIRING, ELIMINATE THE CHAMFER BY USING AN EDGING TOOL.



TYPICAL ABUTMENT JOINT DETAIL WITH SURFACE APPROACH SLAB
NTS



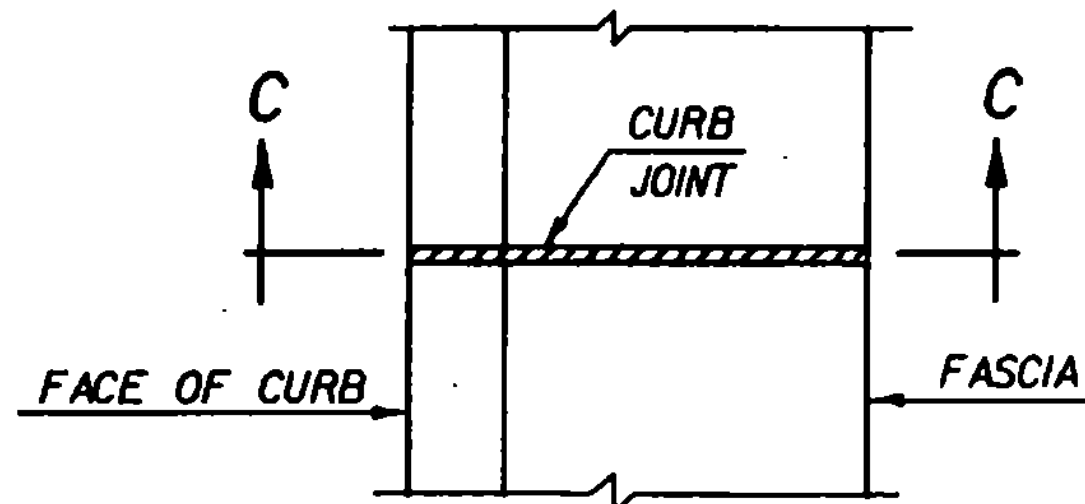
TYPICAL PIER JOINT DETAIL
NTS



SECTION C - C

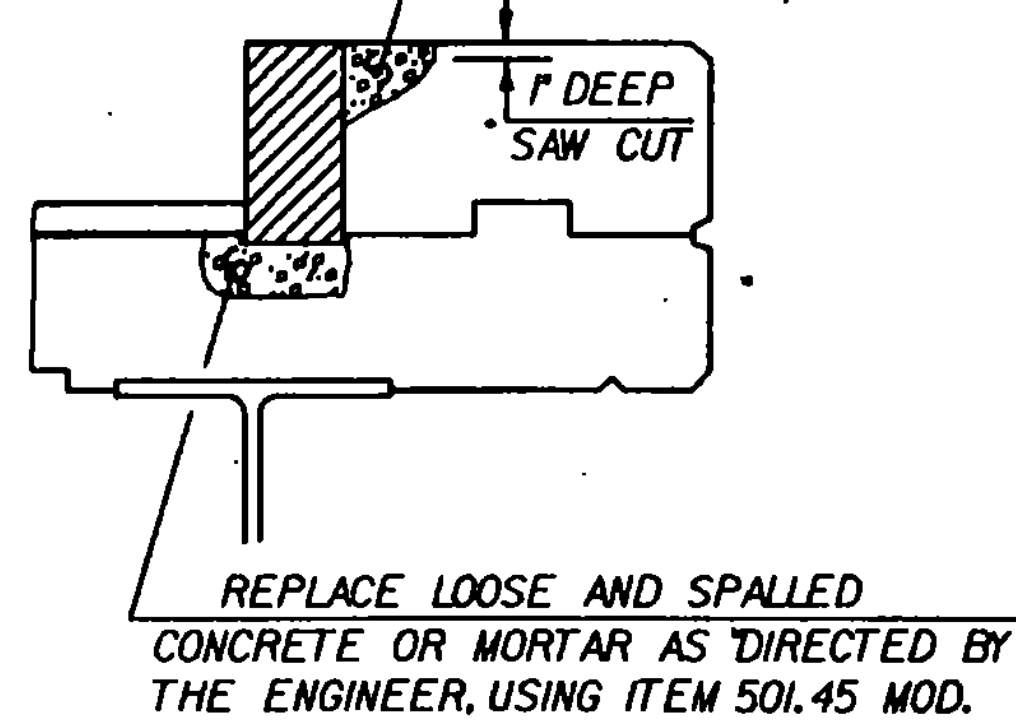
Joints to be raked out to a depth of 2' and repointed with Mortar, Type I (All labor and material required to perform this operation shall be subsidiary to all other items in the contract.)

REPLACE LOOSE AND SPALLED CONCRETE AS DIRECTED BY THE ENGINEER, USING ITEM 529.25 MOD.



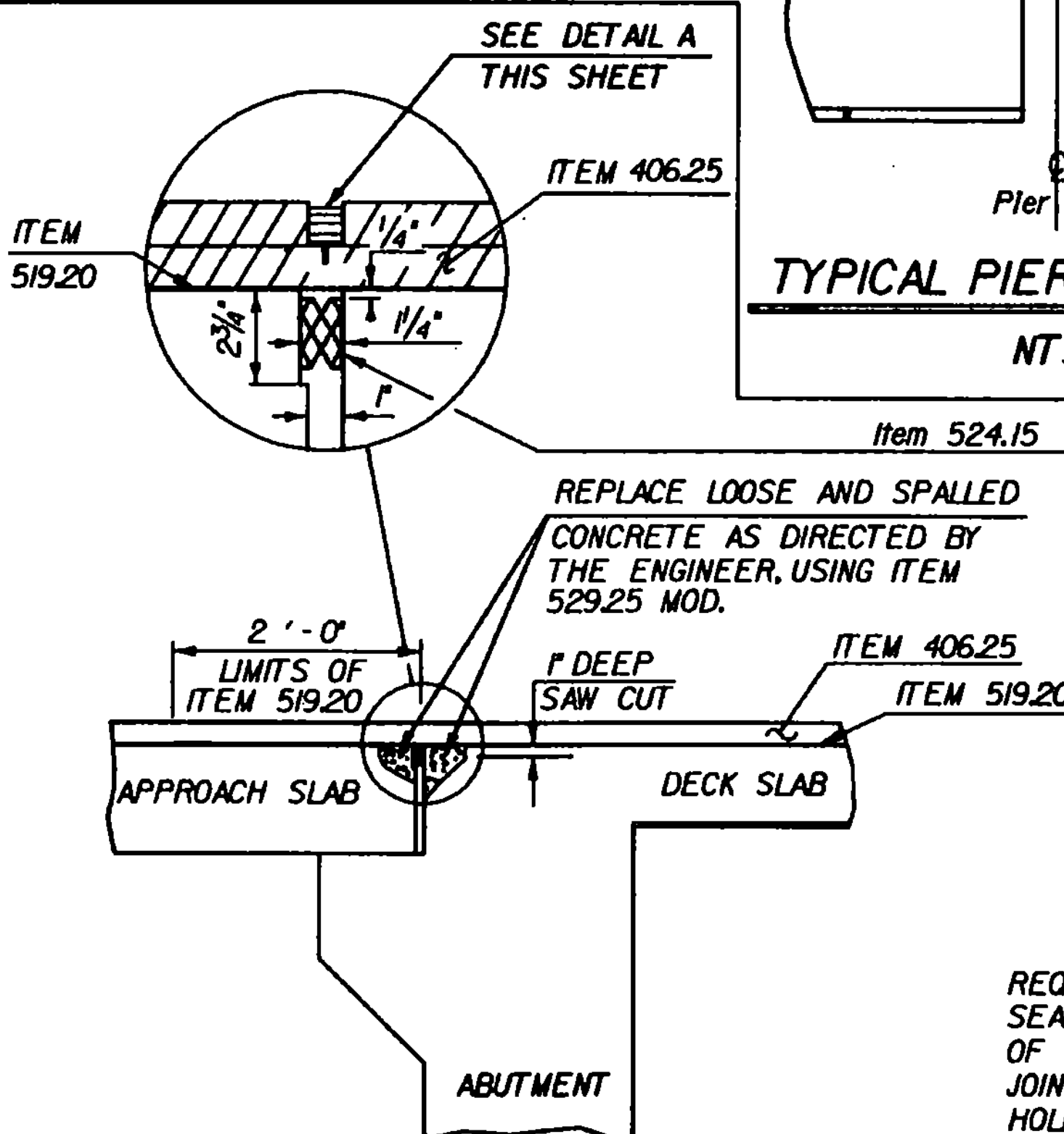
PLAN VIEW

CURB JOINT DETAIL
NTS



REPLACE LOOSE AND SPALLED CONCRETE OR MORTAR AS DIRECTED BY THE ENGINEER, USING ITEM 501.45 MOD.

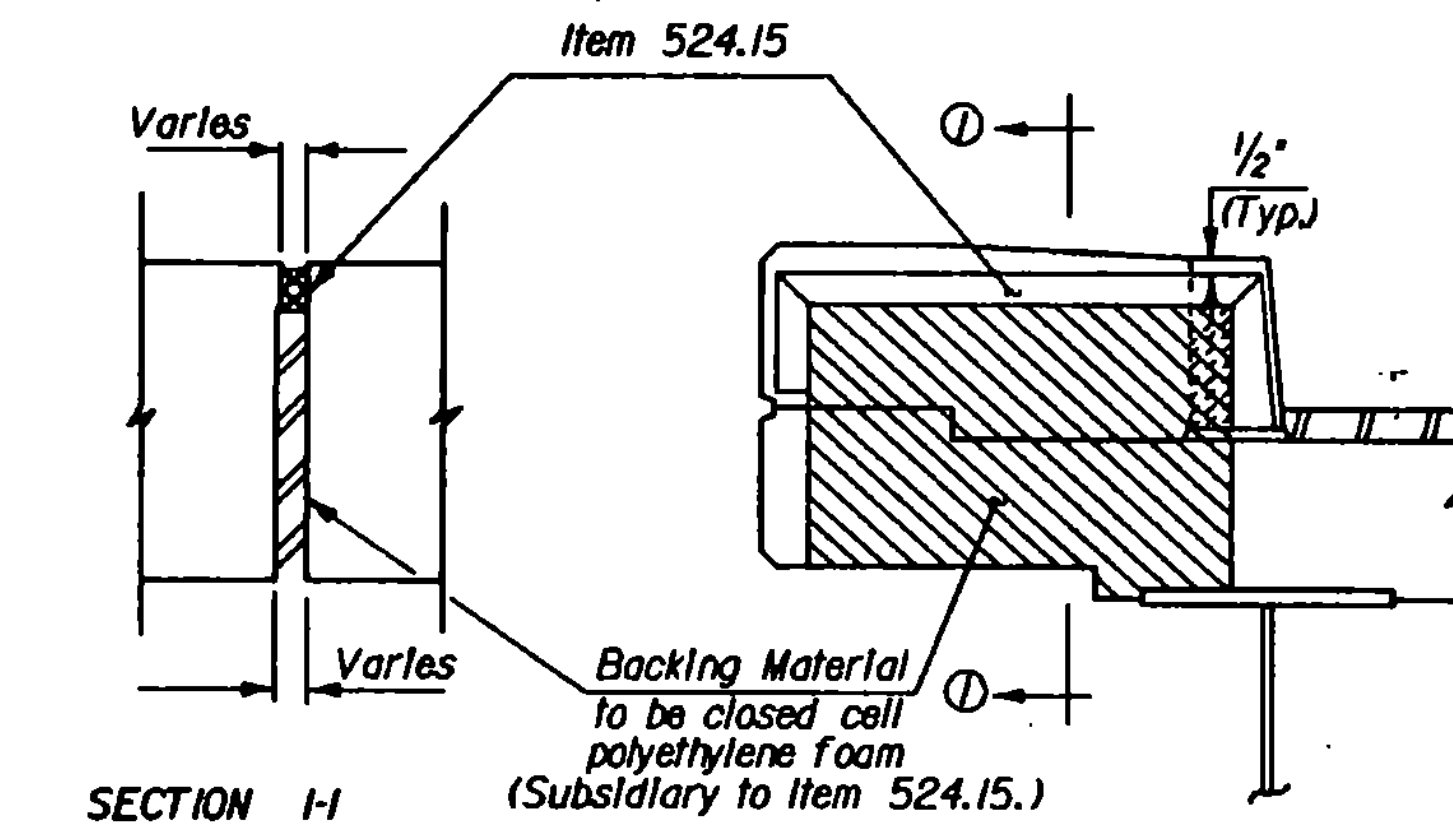
③



COMPRESSION SEAL DETAILS
NTS

ADHESIVE SPECIFICATION

REQUIRED ADHESIVE FOR STRUCTURAL JOINT SEALS SERVES AS A LUBRICANT FOR INSERTION OF THE COMPRESSION SEALS IN STEEL AND CONCRETE JOINTS; PRIMES THE JOINT FACES; SEALS SMALL HOLES AND IMPERFECTIONS IN CONCRETE WALLS. ONE PART MOISTURE CURING POLYURETHANE AND AROMATIC HYDROCARBON SOLVENT MIXTURE. SOLID CONTENT 72% ± 3% BY WEIGHT. APPROXIMATE WEIGHT 8 1/2 ± POUNDS PER GALLON. COLOR, CONCRETE GRAY.



CURB JOINT DETAIL A
NTS

Any existing Joint Sealer, Preformed Neoprene, If removed, shall not be reused but shall be replaced with new material.

STATE OF VERMONT AGENCY OF TRANSPORTATION

Town of **LUDLOW - MT. HOLLY** Bridge No. _____
Highway No. **VT. 100 & VT. 103** Log Sta. _____
Surv. Sta. _____

DECK REHABILITATION

Designed By **G.S. ROGERS** Drawn By **G. Schelley/D. Newton**

Checked By **G.S. ROGERS** Date **6/87** Bridge Design Supervisor **R.L. OATLEY** Date _____

PROJECT **LUDLOW - MT. HOLLY** PROJECT NO. **F-DECK (22) S**

U.S.C. Info. **05A1130.33JDECKREHAB**

Bridge Sheet No. _____ Sheet **13** of **40**

②

⑤

④