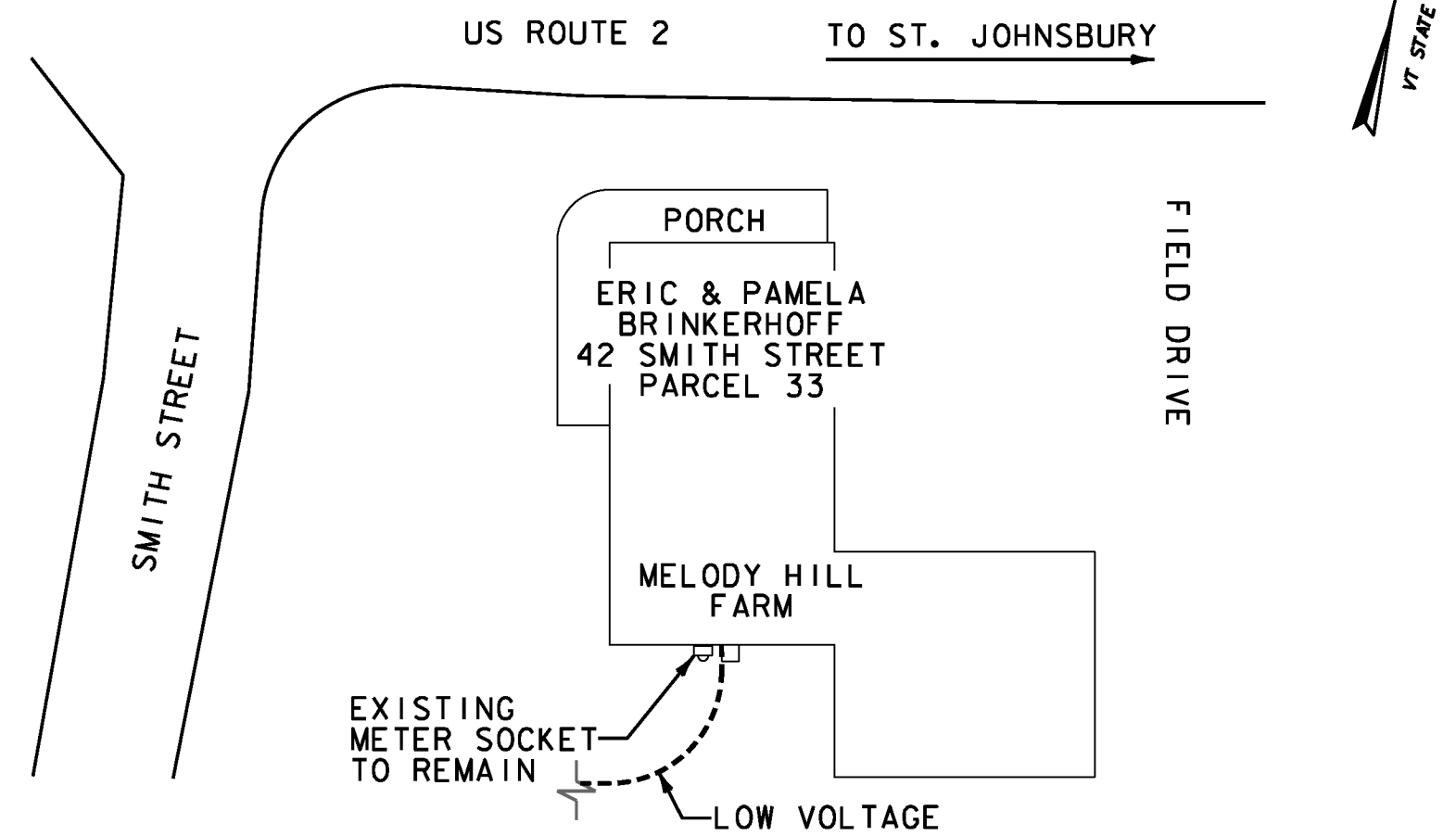
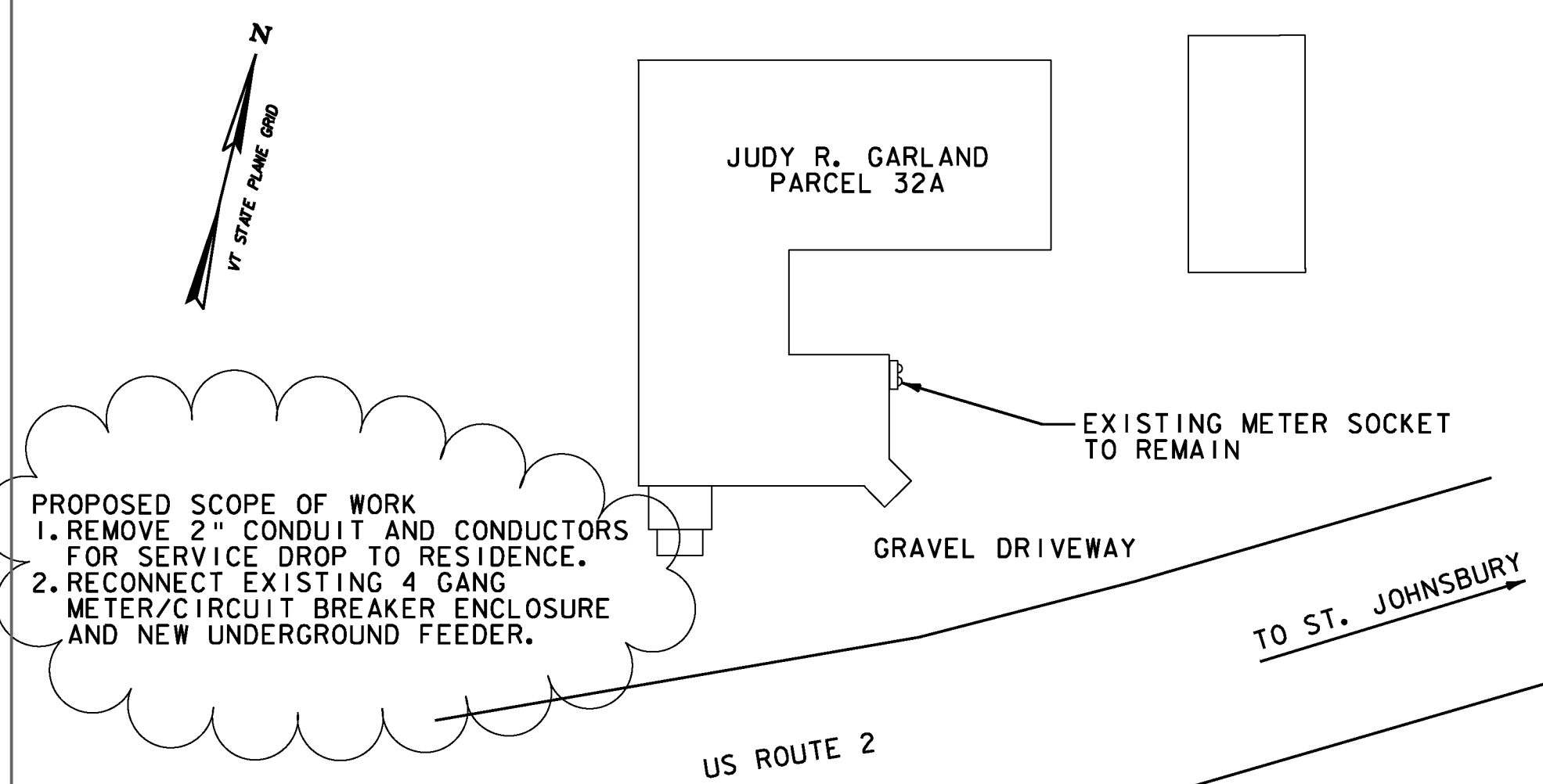


PROPOSED SCOPE OF WORK
 1. REMOVE 2" CONDUIT AND CONDUCTORS FOR SERVICE DROP TO RESIDENCE.
 2. RECONNECT EXISTING 4 GANG METER/CIRCUIT BREAKER ENCLOSURE AND NEW UNDERGROUND FEEDER.



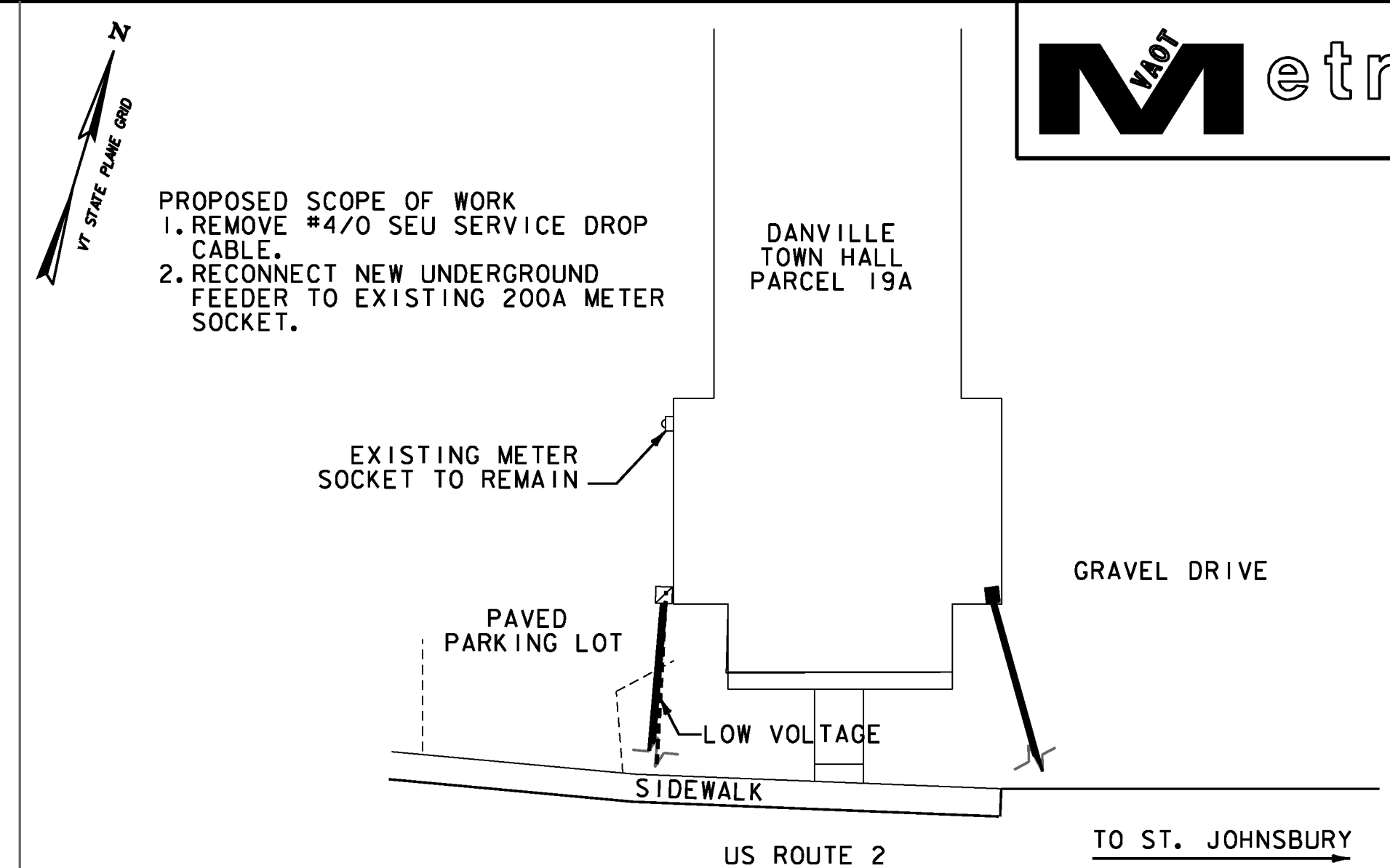
BRINKERHOFF RESIDENCE SITE PLAN - RT2/SMITH ST
 N.T.S.

PROPOSED SCOPE OF WORK
 1. REMOVE 2" CONDUIT AND CONDUCTORS FOR SERVICE DROP TO RESIDENCE.
 2. RECONNECT EXISTING 4 GANG METER/CIRCUIT BREAKER ENCLOSURE AND NEW UNDERGROUND FEEDER.



GARLAND RESIDENCE SITE PLAN - ROUTE 2
 N.T.S.

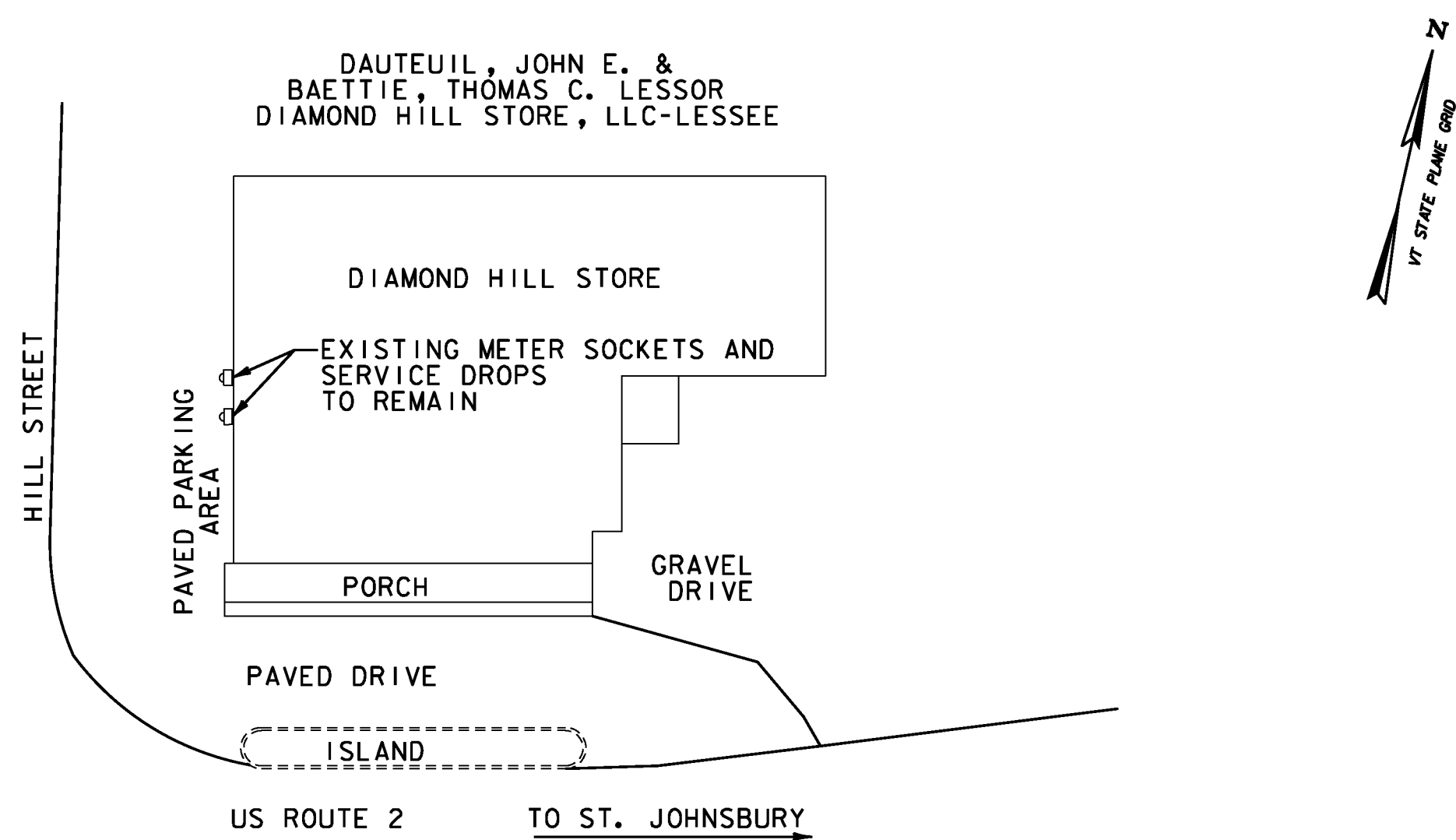
PROPOSED SCOPE OF WORK
 1. REMOVE #4/0 SEU SERVICE DROP CABLE.
 2. RECONNECT NEW UNDERGROUND FEEDER TO EXISTING 200A METER SOCKET.



TOWN HALL SITE PLAN - ROUTE 2
 N.T.S.

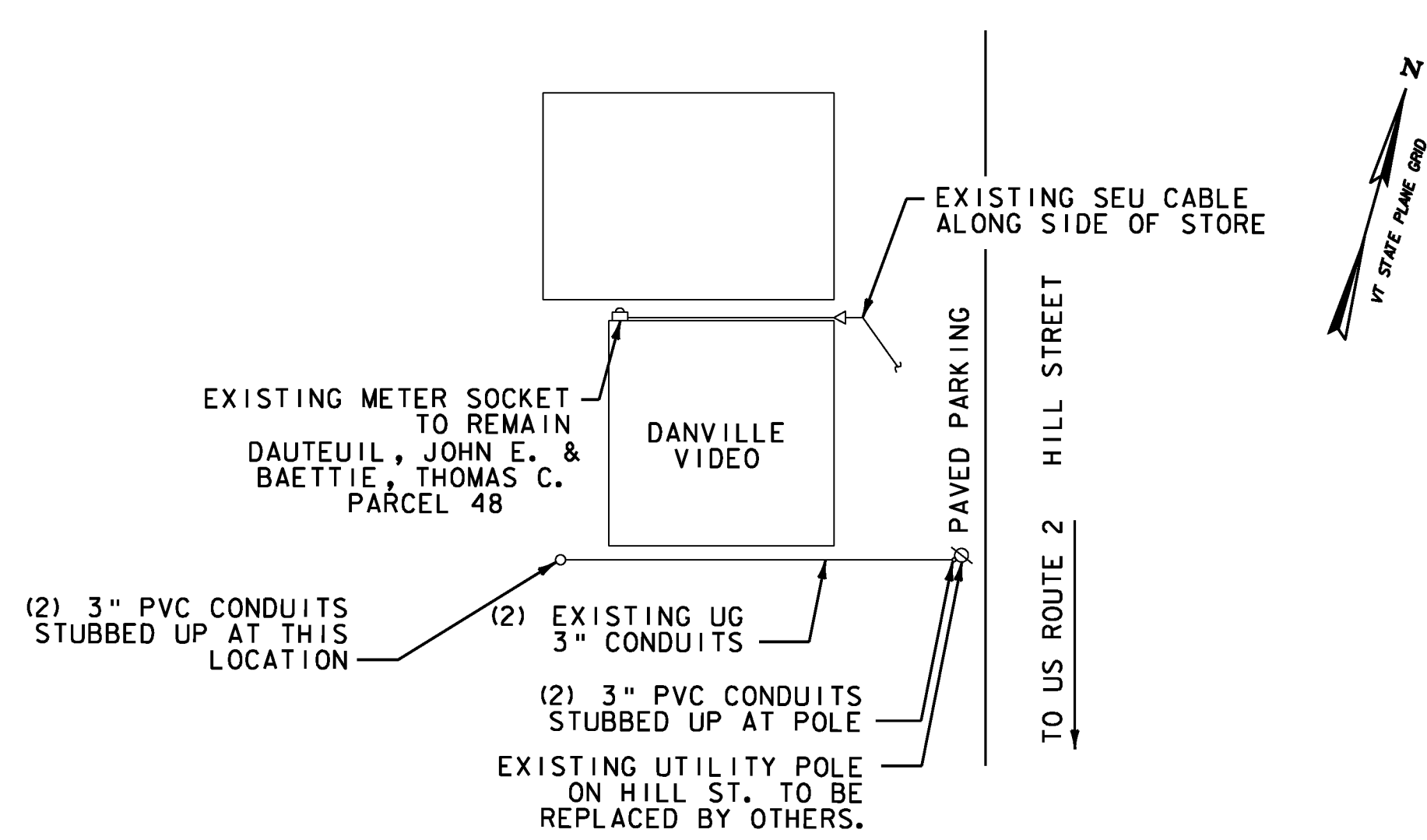


DAUTEUIL, JOHN E. & BAETTIE, THOMAS C. LESSOR
 DIAMOND HILL STORE, LLC-LESSEE

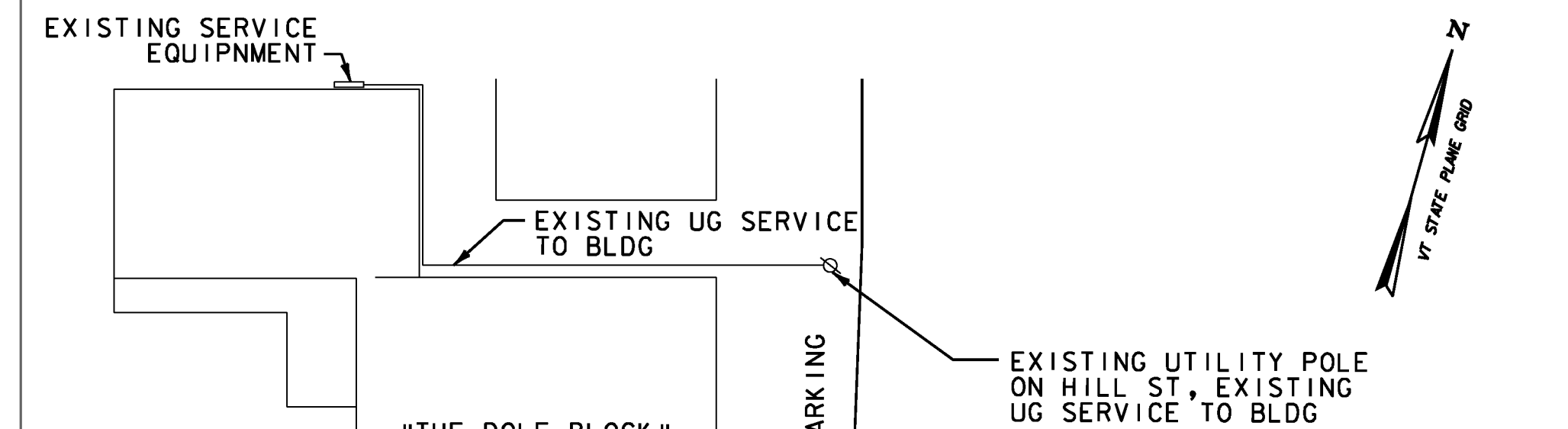


DIAMOND HILL STORE SITE PLAN - ROUTE 2
 N.T.S.

DAUTEUIL, JOHN E. & BAETTIE, THOMAS C. PARCEL 48

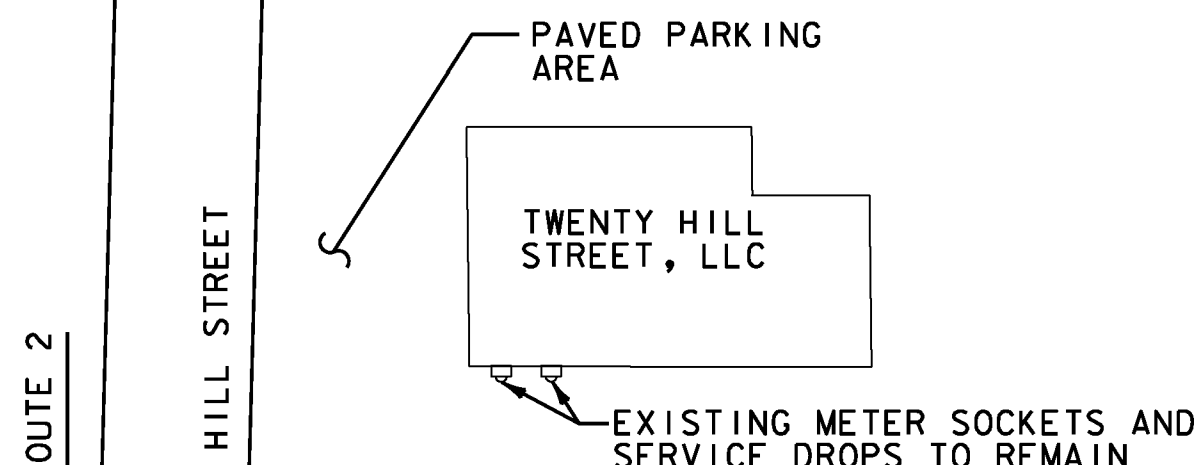


VIDEO STORE SITE PLAN - HILL ST.
 N.T.S.



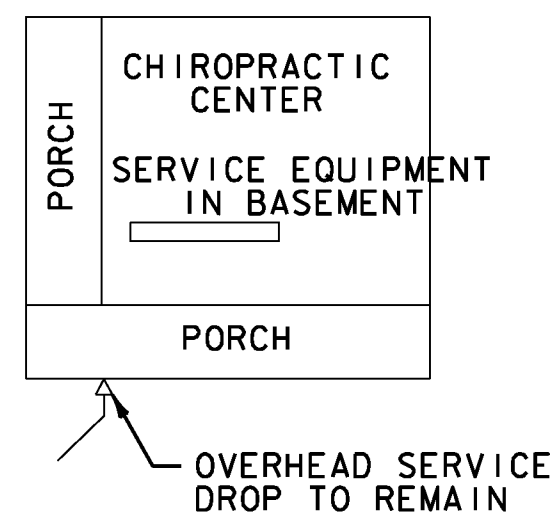
PROPOSED SCOPE OF WORK
 1. EXISTING 600A, 120/240V, 1Ø, 3 WIRE SERVICE EQUIP. AND UG FEEDER TO REMAIN.
 2. EXISTING SERVICE CONDUITS RISE UP POLE ON HILL ST.
 3. ELECTRICAL CONTRACTOR TO COORDINATE WITH LOCAL UTILITY COMPANY FOR RELOCATION OF SERVICE CONDUITS AND CONDUCTORS.

THE DOLE BLOCK SITE PLAN CORNER OF ROUTE 2 & HILL ST.
 N.T.S.



REPLACEMENT SHEETS
 ISSUED 02/24/2012

20 HILL STREET SITE PLAN - HILL ST.
 N.T.S.



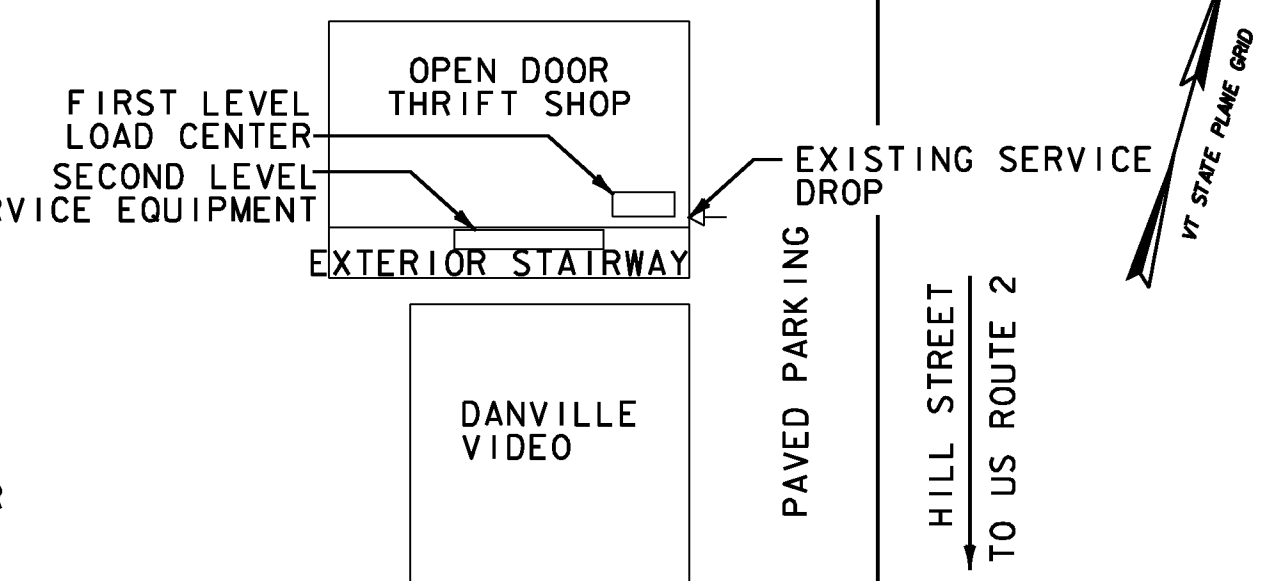
PROPOSED SCOPE OF WORK

1. REMOVE 2" RIGID CONDUIT AND CONDUCTORS FOR SERVICE ENTRANCE. PROVIDE A FIVE GANG, 200 AMP, 120/240V, 1Ø A2 3 WIRE METER SOCKET WITH THREE 100A MAIN BREAKERS AND TWO 60A, 2 POLE MAIN BREAKERS.
2. PROVIDE THREE #2 SER CABLES FROM THE MAIN BREAKERS TO THE TWO 100A PANELS AND ONE 100A DISCONNECT IN BASEMENT. REMOVE NEUTRAL/GROUND BOND IN PANELS/DISCONNECT AND SEPARATE NEUTRALS AND EQUIPMENT GROUNDS. PROVIDE SEPARATE GROUND BAR FOR EQUIPMENT GROUNDS.
3. PROVIDE TWO #6 SER CABLES FROM THE 60A BREAKERS TO THE TWO 60A DISCONNECTS IN BASEMENT. SEPARATE NEUTRAL/GROUNDS AS DESCRIBED ABOVE.
5. REMOVE GROUNDING ELECTRODE CONDUCTOR FROM EXISTING SERVICE EQUIPMENT.
6. PROVIDE NEW WATER SYSTEM GROUND AND GROUND RODS FOR NEW SERVICE EQUIPMENT.

CHIROPRACTIC CENTER SITE PLAN - HILL ST.
 N.T.S.

PROPOSED SCOPE OF WORK

1. REMOVE #2 SEU SERVICE ENTRANCE CABLE AND SERVICE ENTRANCE EQUIPMENT AT SECOND LEVEL EXTERIOR STAIRWAY.
2. REMOVE GROUNDING ELECTRODE CONDUCTOR FROM EXISTING SERVICE EQUIPMENT.
3. REMOVE 100A LOAD CENTER AT FIRST LEVEL.
4. PROVIDE NEW 100 AMP, 120/240V, 1Ø, 3 WIRE, 3Ø CKT. LOAD CENTER AT FIRST LEVEL.
5. EXTEND THE FOUR 20A, 120V CIRCUITS FROM THE EXISTING SERVICE ENTRANCE LOCATION TO THE NEW LOAD CENTER.
6. PROVIDE A GROUNDING ELECTRODE SYSTEM UTILIZING WATER PIPE AND GROUND RODS, GROUND AT NEW LOAD CENTER.



THRIFT STORE SITE PLAN - HILL ST.
 N.T.S.

PROJECT NAME: DANVILLE
 PROJECT NUMBER: F EGC 028-3(32)

FILE NAME: ...100 det.ut113.ppf
 DESIGN SUPERVISOR: GARY SANTY
 DESIGNED BY: STANTEC
 UTILITIES DETAILS UD-2

PLOT DATE: 2/24/2012
 DRAWN BY: STANTEC
 CHECKED BY: STANTEC
 SHEET 215H OF 306

