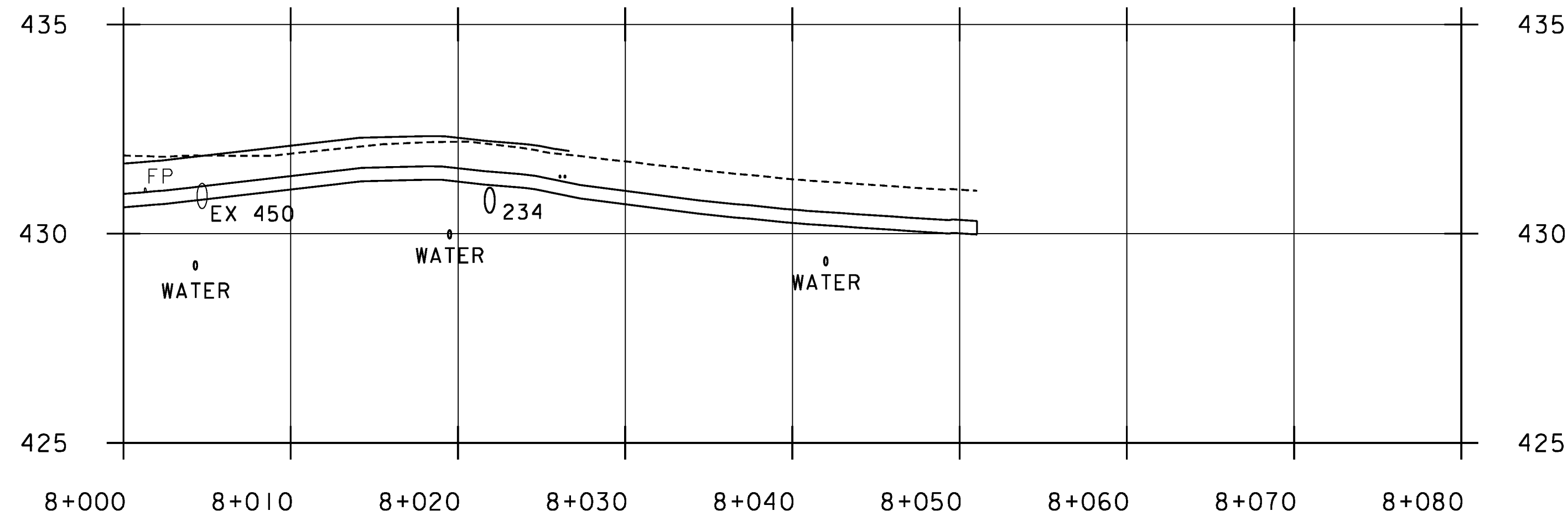
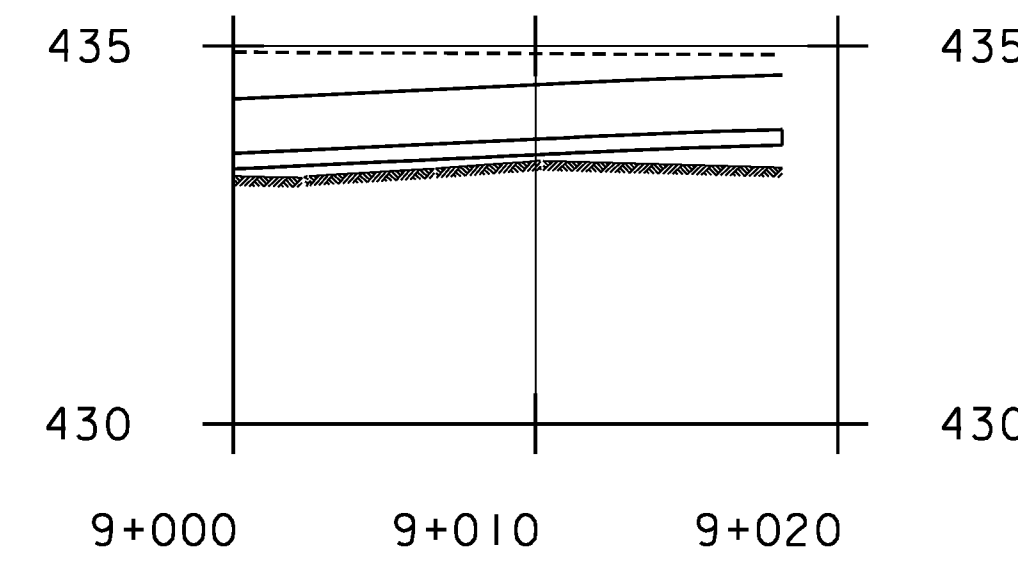


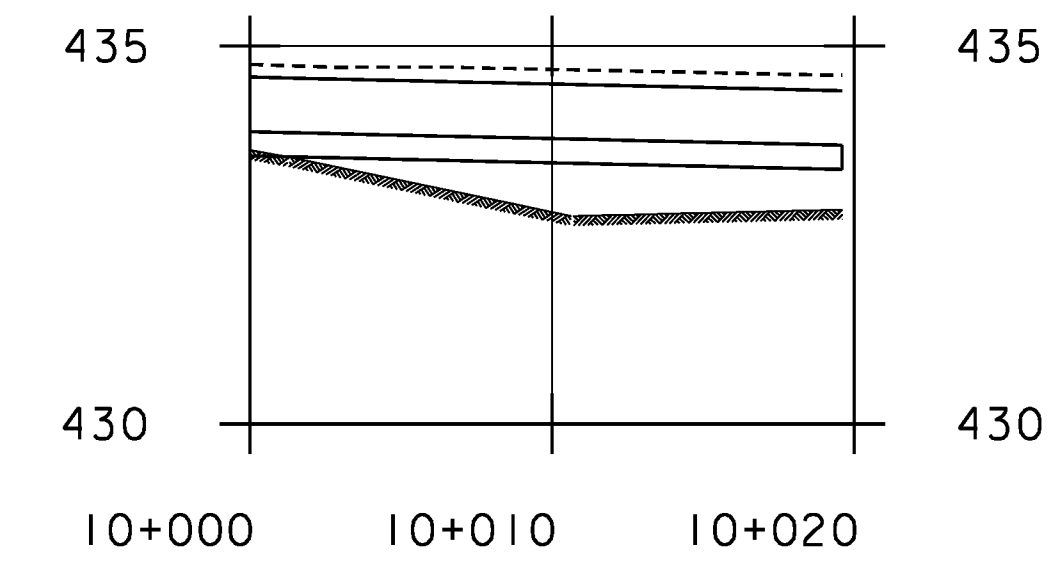
TYPICAL DUCT 8



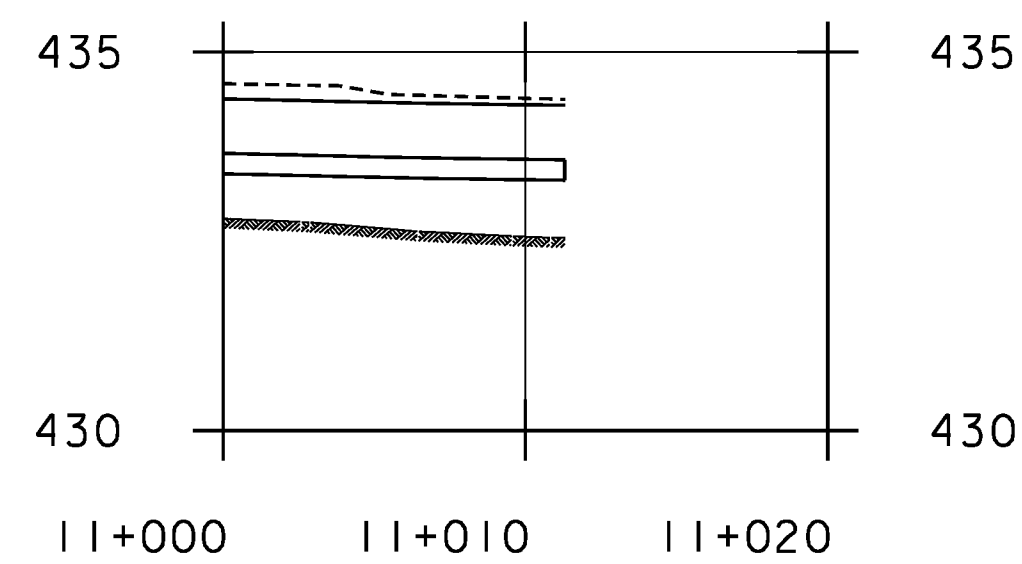
TYPICAL DUCT 9



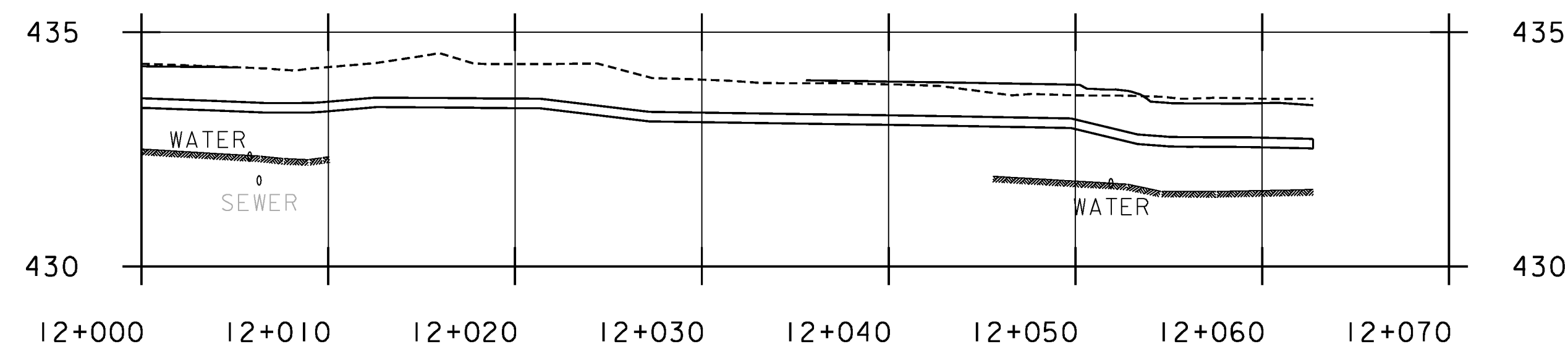
TYPICAL DUCT 10



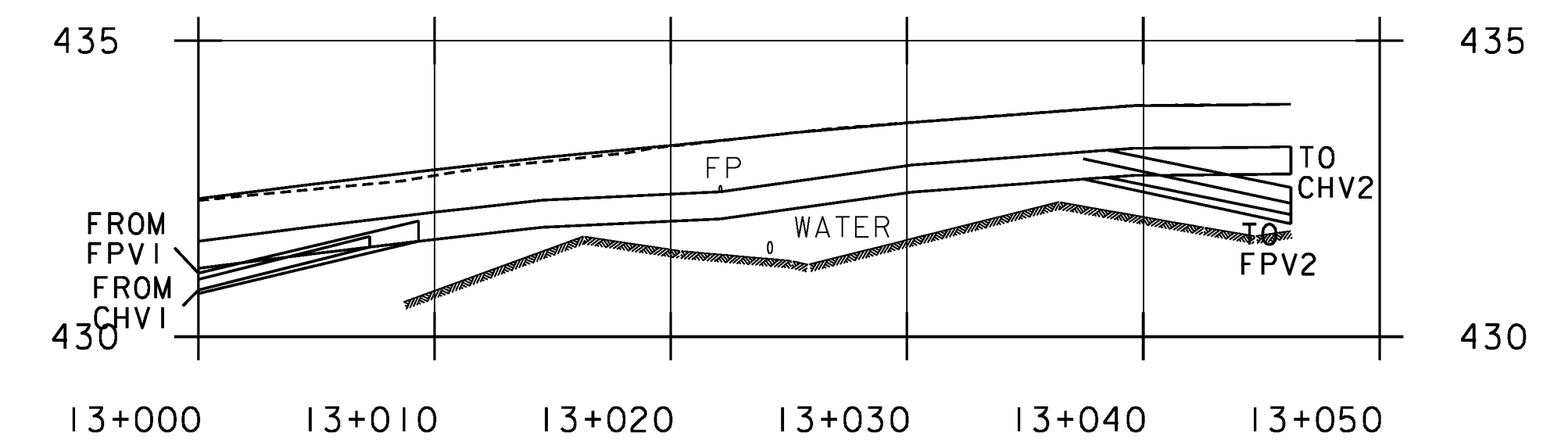
TYPICAL DUCT 11



TYPICAL DUCT 12



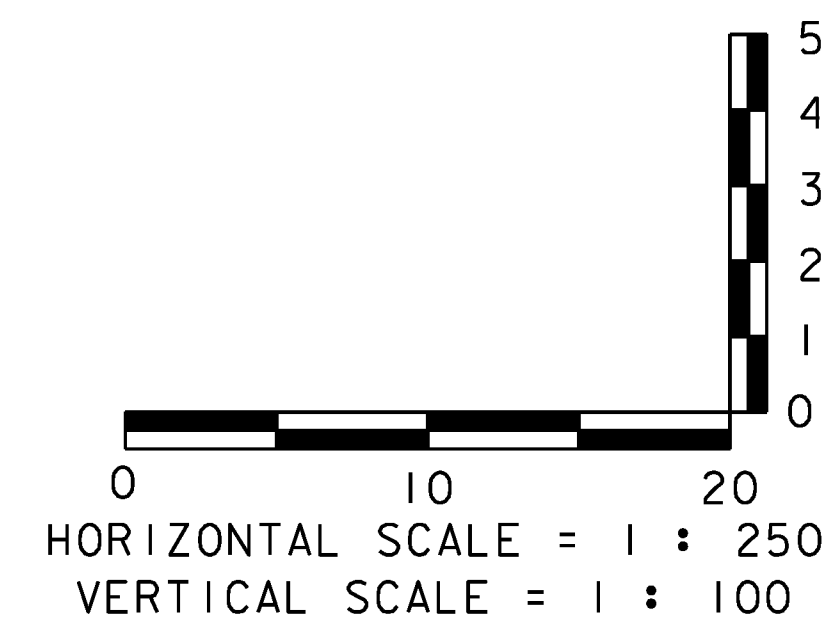
TYPICAL DUCT 13



- EXISTING GRADE
- _____ FINISH GRADE
- (T) CVPS 3-PHASE
- (S) CVPS SINGLE PHASE

NOTE:
BEGIN AND END OF DUCT SHALL CORRESPOND
TO DIRECTION OF ARROWHEAD ON UTILITY
PLANS.

**REPLACEMENT SHEETS
ISSUED 02/24/2012**



PROJECT NAME: DANVILLE
PROJECT NUMBER: F EGC 028-3(32)

FILE NAME: ...100 det.profiles.ptf
DESIGN SUPERVISOR: GARY SANTY
DESIGNED BY: STANTEC
DUCT BANK PROFILES DTP-02

PLOT DATE: 2/24/2012
DRAWN BY: STANTEC
CHECKED BY: STANTEC
SHEET 215A OF 306