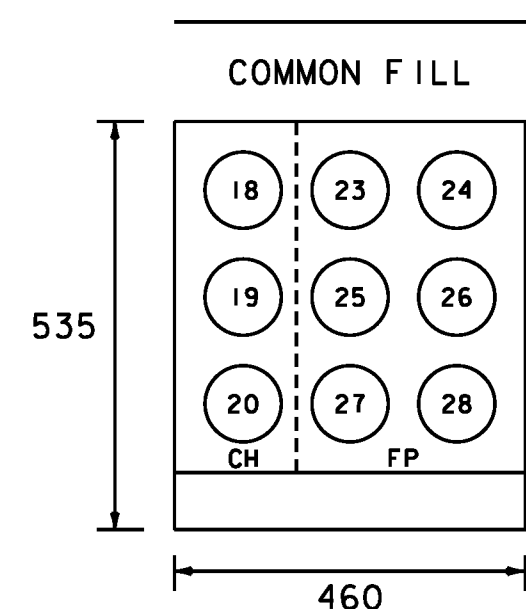


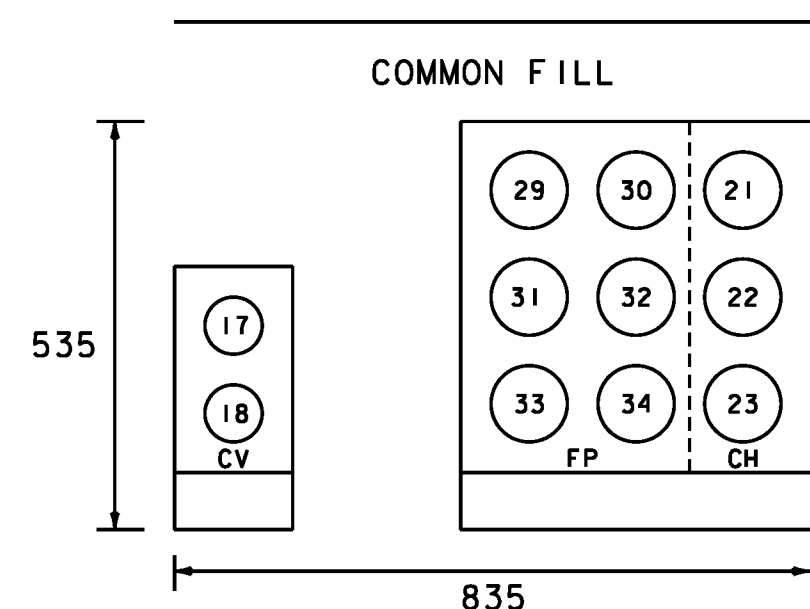
CONDUIT PER UTILITY IN DUCT:
 CHARTER - (3) @ 100
 CVPS - N/A
 FAIRPOINT - (6) @ 100
 SOVERNET - N/A



**UTILITY DUCT BANK
 TYPICAL SECTION 13**

N.T.S.
 4+035.7, LT - 4+077.5, LT
 DUCT LENGTH - 42.4m

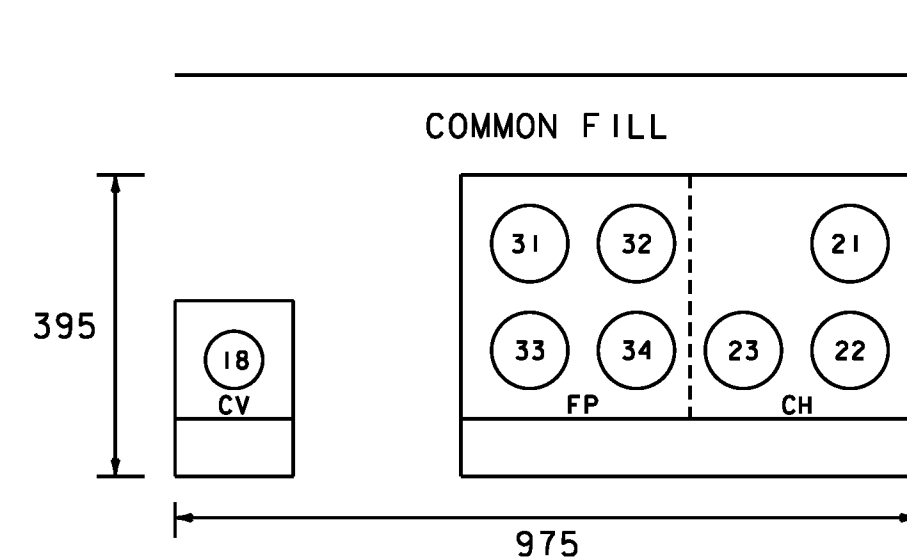
CONDUIT PER UTILITY IN DUCT:
 CHARTER - (3) @ 100
 CVPS - (2) @ 75
 FAIRPOINT - (6) @ 100
 SOVERNET - N/A



**UTILITY DUCT BANK
 TYPICAL SECTION 14**

N.T.S.
 4+177.6, LT - 4+139.1, LT
 DUCT LENGTH - 21.5m

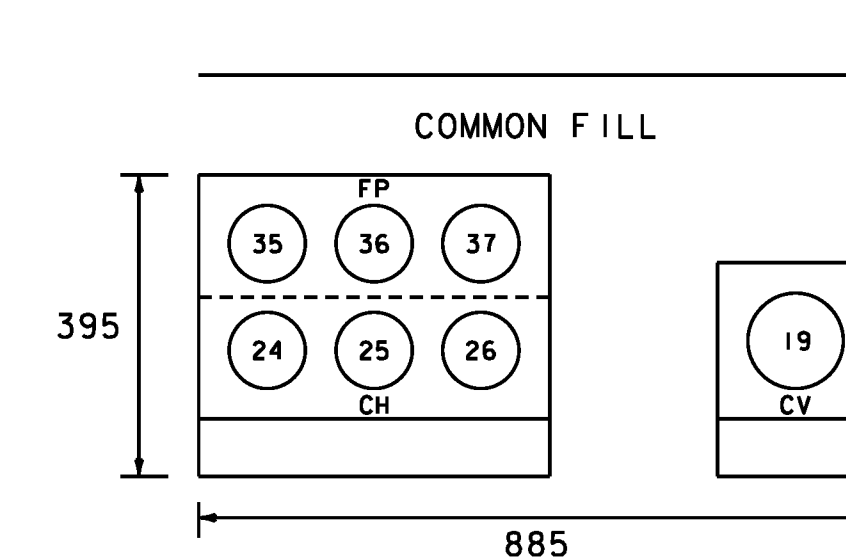
CONDUIT PER UTILITY IN DUCT:
 CHARTER - (3) @ 100
 CVPS - (1) @ 75
 FAIRPOINT - (4) @ 100
 SOVERNET - N/A



**UTILITY DUCT BANK
 TYPICAL SECTION 15**

N.T.S.
 4+141.4, LT - 4+153.5, LT
 DUCT LENGTH - 12.1m

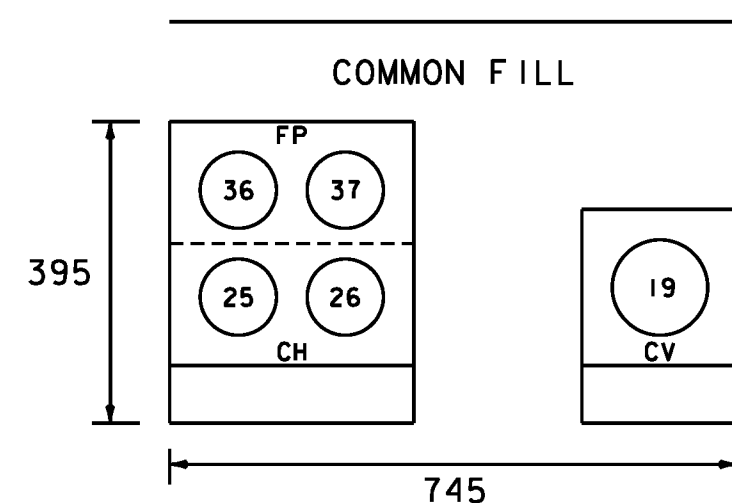
CONDUIT PER UTILITY IN DUCT:
 CHARTER - (3) @ 100
 CVPS - (1) @ 125
 FAIRPOINT - (3) @ 100
 SOVERNET - N/A



**UTILITY DUCT BANK
 TYPICAL SECTION 16**

N.T.S.
 2+162.3, LT - 2+190.4, LT
 DUCT LENGTH - 27.6m

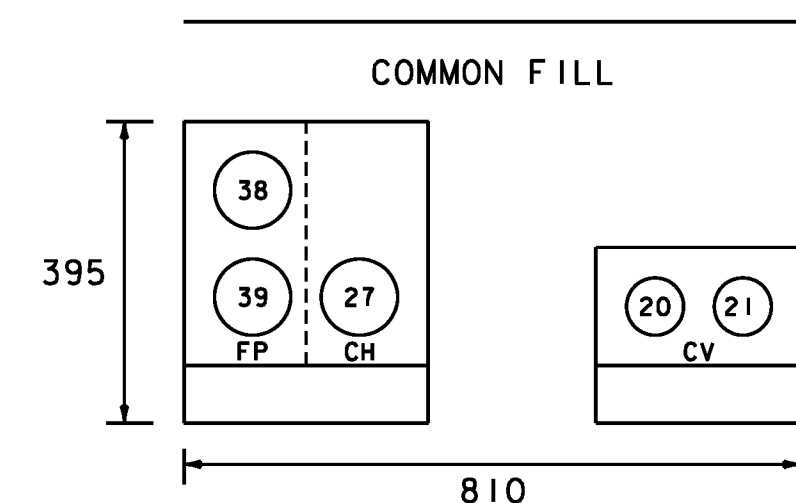
CONDUIT PER UTILITY IN DUCT:
 CHARTER - (2) @ 100
 CVPS - (1) @ 125
 FAIRPOINT - (2) @ 100
 SOVERNET - N/A



**UTILITY DUCT BANK
 TYPICAL SECTION 17**

N.T.S.
 2+193.4, LT - 2+213.9, LT
 DUCT LENGTH - 13.9m

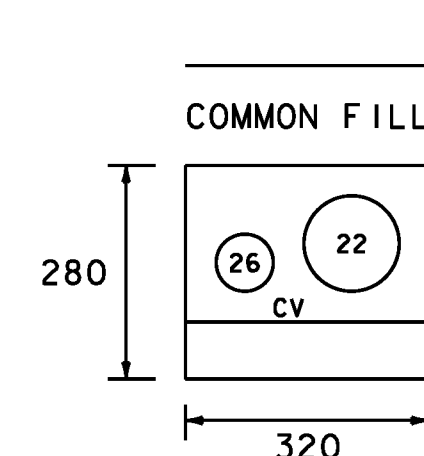
CONDUIT PER UTILITY IN DUCT:
 CHARTER - (1) @ 100
 CVPS - (2) @ 75
 FAIRPOINT - (2) @ 100
 SOVERNET - N/A



**UTILITY DUCT BANK
 TYPICAL SECTION 18**

N.T.S.
 2+213.9, LT - 2+237.0, RT
 DUCT LENGTH - 29.5m

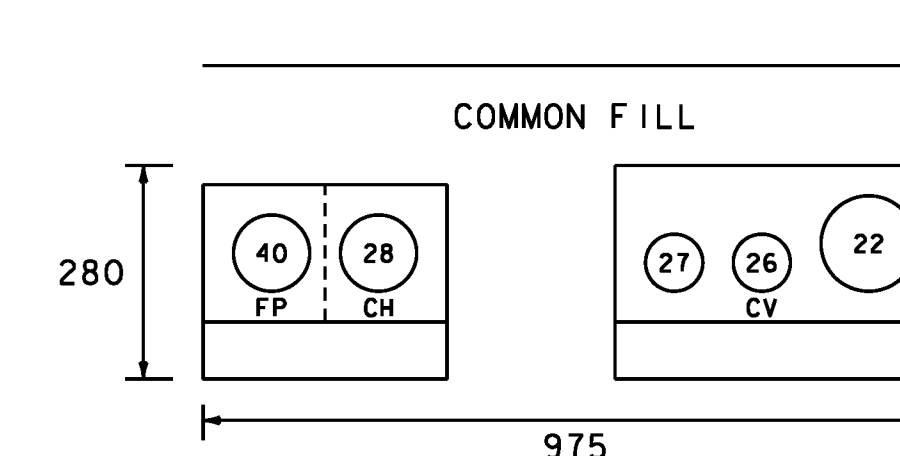
CONDUIT PER UTILITY IN DUCT:
 CHARTER - N/A
 CVPS - (1) @ 125
 FAIRPOINT - (1) @ 75
 SOVERNET - N/A



**UTILITY DUCT BANK
 TYPICAL SECTION 19**

N.T.S.
 5+031.9, LT - 5+058.1, LT
 DUCT LENGTH - 26.5m

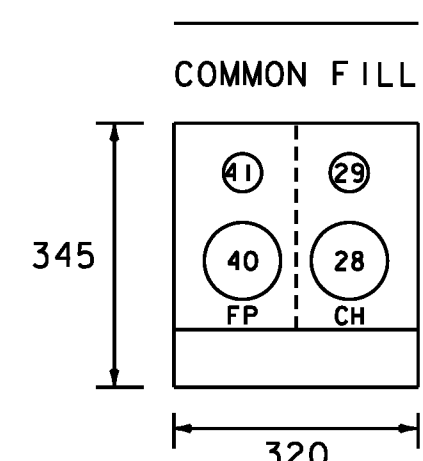
CONDUIT PER UTILITY IN DUCT:
 CHARTER - (1) @ 100
 CVPS - (1) @ 125
 FAIRPOINT - (2) @ 75
 SOVERNET - N/A



**UTILITY DUCT BANK
 TYPICAL SECTION 20**

N.T.S.
 5+061.3, LT - 5+080.8, LT
 DUCT LENGTH - 19.4m

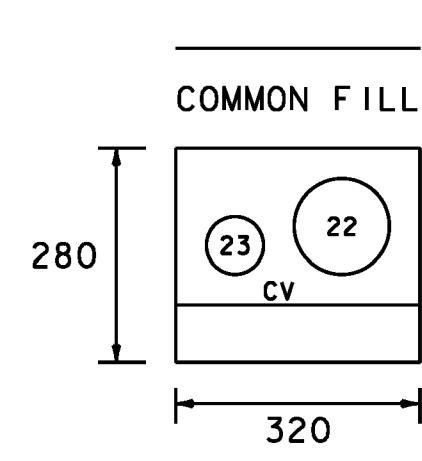
CONDUIT PER UTILITY IN DUCT:
 CHARTER - (1) @ 100
 CVPS - (1) @ 50
 FAIRPOINT - (1) @ 100
 SOVERNET - N/A



**UTILITY DUCT BANK
 TYPICAL SECTION 21**

N.T.S.
 5+085.8, LT - 5+089.3, LT
 DUCT LENGTH - 4.2m

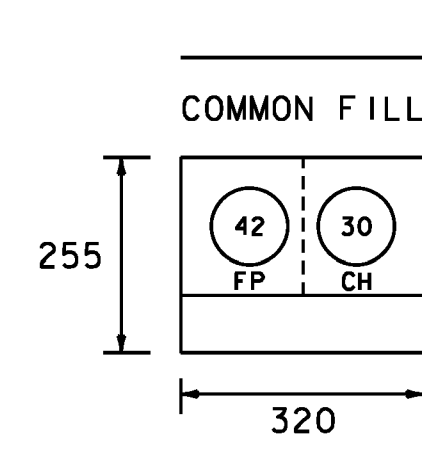
CONDUIT PER UTILITY IN DUCT:
 CHARTER - N/A
 CVPS - (1) @ 125
 FAIRPOINT - (1) @ 75
 SOVERNET - N/A



**UTILITY DUCT BANK
 TYPICAL SECTION 22**

N.T.S.
 5+093.0, LT - 5+106.1, LT
 DUCT LENGTH - 13.3m

CONDUIT PER UTILITY IN DUCT:
 CHARTER - (1) @ 100
 CVPS - N/A
 FAIRPOINT - (1) @ 100
 SOVERNET - N/A



**UTILITY DUCT BANK
 TYPICAL SECTION 23**

N.T.S.
 5+094.5, LT - 5+105.8, LT
 DUCT LENGTH - 11.3m

PROJECT NAME: DANVILLE
 PROJECT NUMBER: F EGC 028-3(32)

FILE NAME: ...\\100 det.duct typical.ptf PLOT DATE: 2/24/2012
 DESIGN SUPERVISOR: GARY SANTY DRAWN BY: STANTEC
 DESIGNED BY: STANTEC CHECKED BY: STANTEC
 DUCT BANK TYPICAL SECTIONS DB-02 SHEET 213A OF 306

**REPLACEMENT SHEETS
 ISSUED 02/24/2012**



2/24/2012 3:42 PM V:\E3\active\10530033_1095\Construction\Final Changes\Underground Utility\100 det.duct typical.ptf