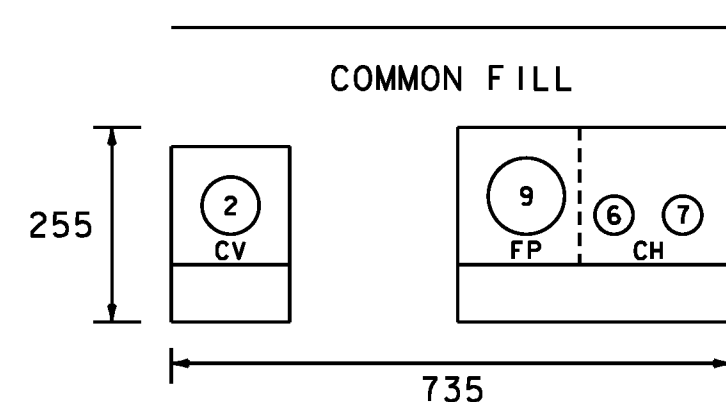




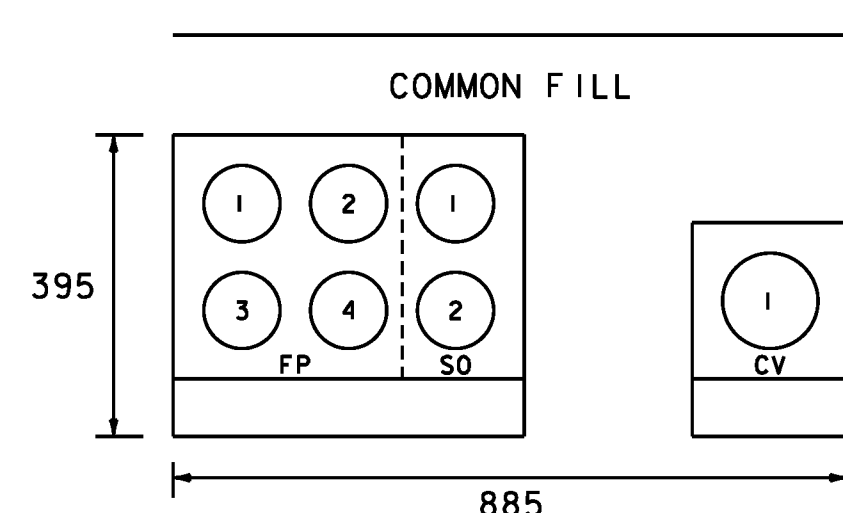
CONDUIT PER UTILITY IN DUCT:
 CHARTER - (2) 50
 CVPS - (1) 75
 FAIRPOINT - (1) 100
 SOVERNET - N/A



**UTILITY DUCT BANK
 TYPICAL SECTION 1**

N.T.S.
 19+103.8, RT - 19+107.1, LT
 DUCT LENGTH - 11.6m

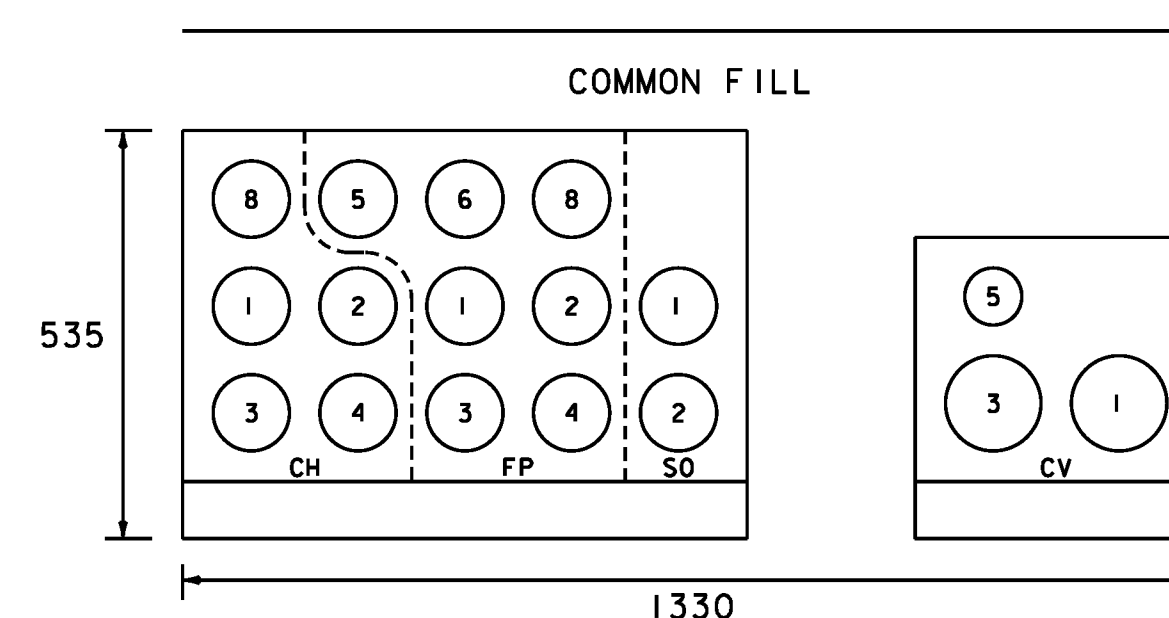
CONDUIT PER UTILITY IN DUCT:
 CHARTER - N/A
 CVPS - (1) 125
 FAIRPOINT - (4) 100
 SOVERNET - (2) 100



**UTILITY DUCT BANK
 TYPICAL SECTION 2**

N.T.S.
 19+106.5, RT - 19+082.9, RT
 DUCT LENGTH - 21.9m

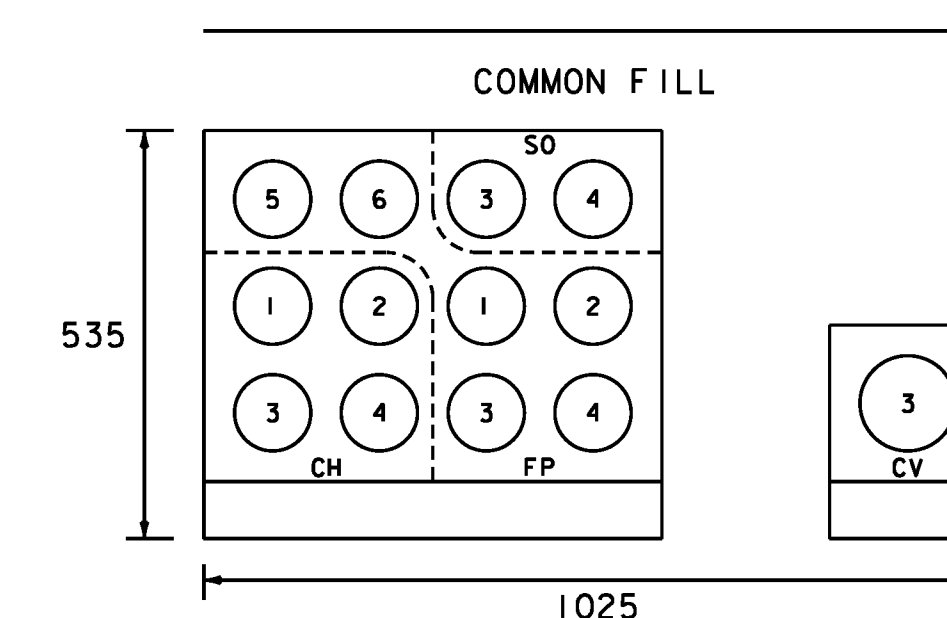
CONDUIT PER UTILITY IN DUCT:
 CHARTER - (5) 100
 CVPS - (2) 125
 FAIRPOINT - (7) 100
 SOVERNET - (2) 100



**UTILITY DUCT BANK
 TYPICAL SECTION 3**

N.T.S.
 19+105.6, RT - 19+113.5, RT
 DUCT LENGTH - 8.5m

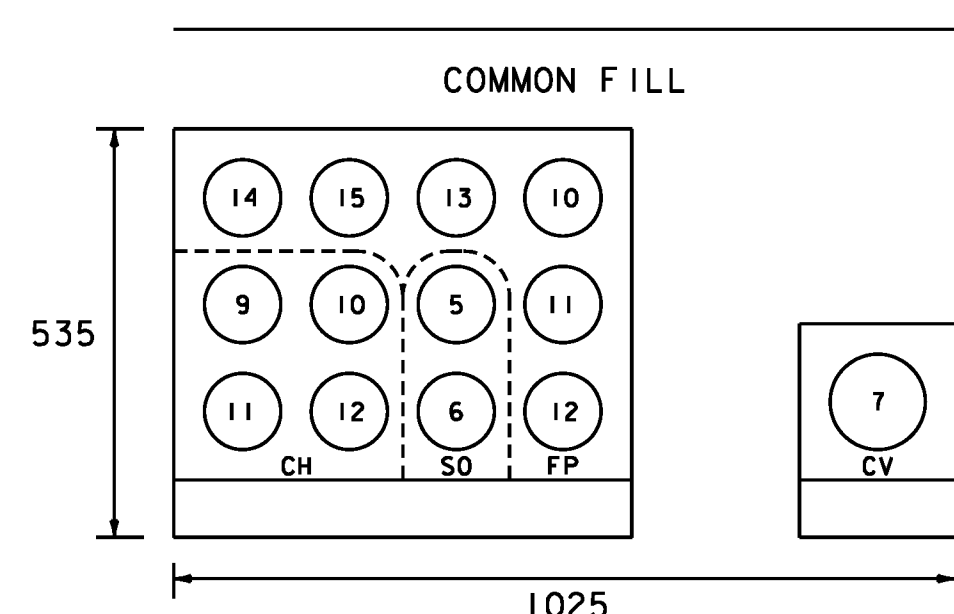
CONDUIT PER UTILITY IN DUCT:
 CHARTER - (4) 100
 CVPS - (1) 125
 FAIRPOINT - (6) 100
 SOVERNET - (2) 100



**UTILITY DUCT BANK
 TYPICAL SECTION 4**

N.T.S.
 2+018.2, RT - 4+028.6, RT
 DUCT LENGTH - 53.6m

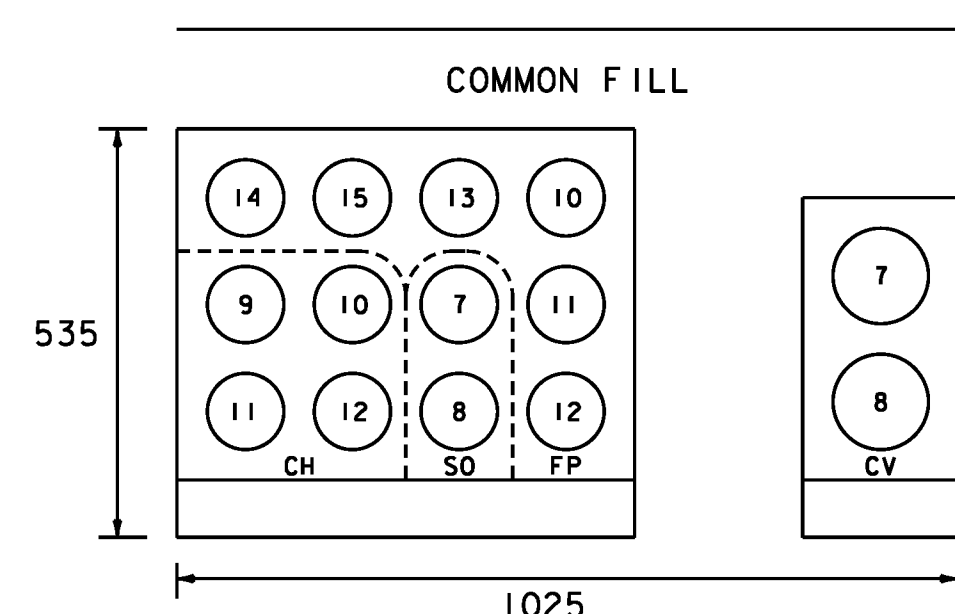
CONDUIT PER UTILITY IN DUCT:
 CHARTER - (4) 100
 CVPS - (1) 125
 FAIRPOINT - (6) 100
 SOVERNET - (2) 100



**UTILITY DUCT BANK
 TYPICAL SECTION 5**

N.T.S.
 19+195.1, RT - 19+225.2, RT
 DUCT LENGTH - 35.0m

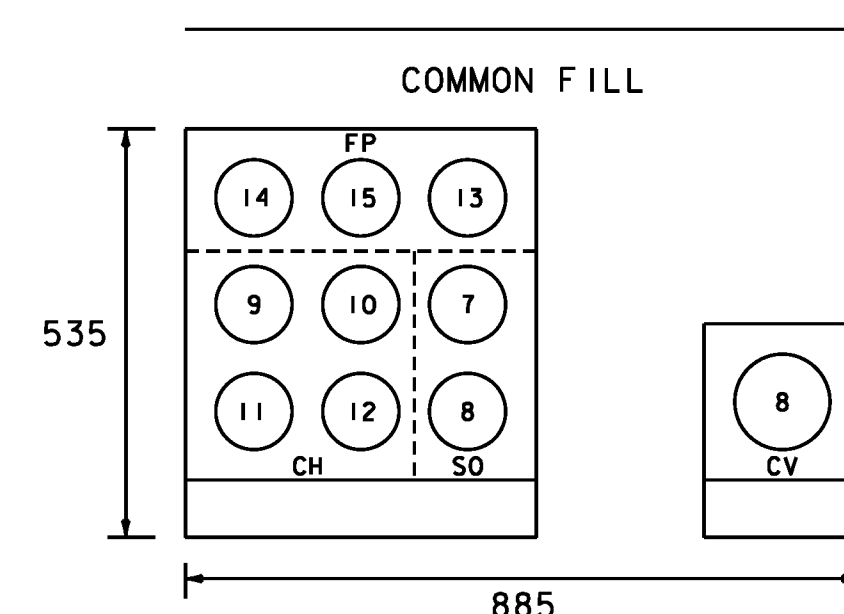
CONDUIT PER UTILITY IN DUCT:
 CHARTER - (4) 100
 CVPS - (2) 125
 FAIRPOINT - (6) 100
 SOVERNET - (2) 100



**UTILITY DUCT BANK
 TYPICAL SECTION 6**

N.T.S.
 19+234.5, RT - 19+252.1, RT
 DUCT LENGTH - 18.2m

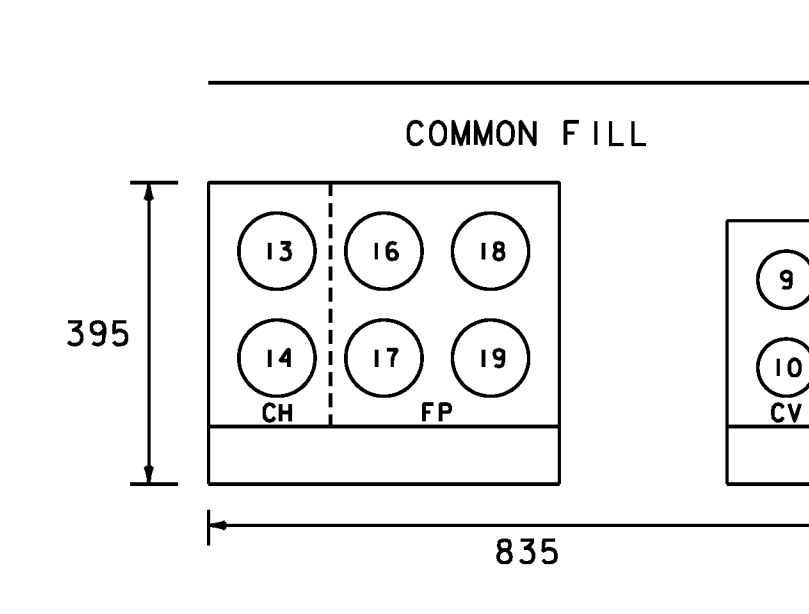
CONDUIT PER UTILITY IN DUCT:
 CHARTER - (4) 100
 CVPS - (1) 125
 FAIRPOINT - (3) 100
 SOVERNET - (2) 100



**UTILITY DUCT BANK
 TYPICAL SECTION 7**

N.T.S.
 19+256.3, RT - 19+274.1, RT
 DUCT LENGTH - 17.8m

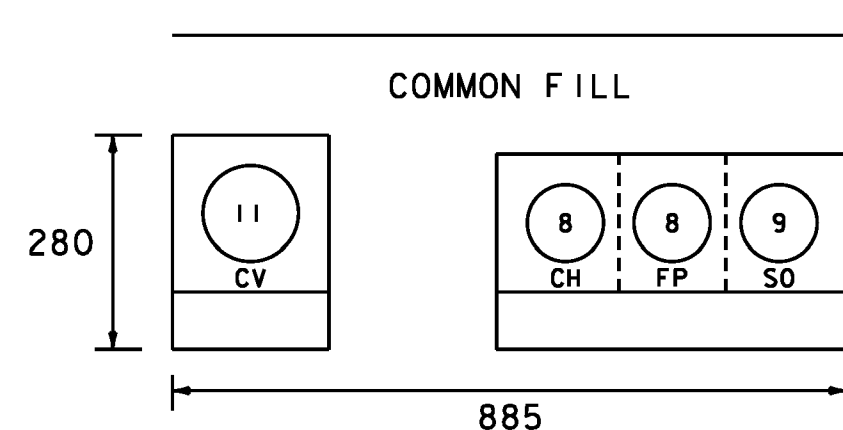
CONDUIT PER UTILITY IN DUCT:
 CHARTER - (2) 100
 CVPS - (2) 75
 FAIRPOINT - (4) 100
 SOVERNET - N/A



**UTILITY DUCT BANK
 TYPICAL SECTION 8**

N.T.S.
 19+177.9, RT - 3+062.4, LT
 DUCT LENGTH - 77.4m

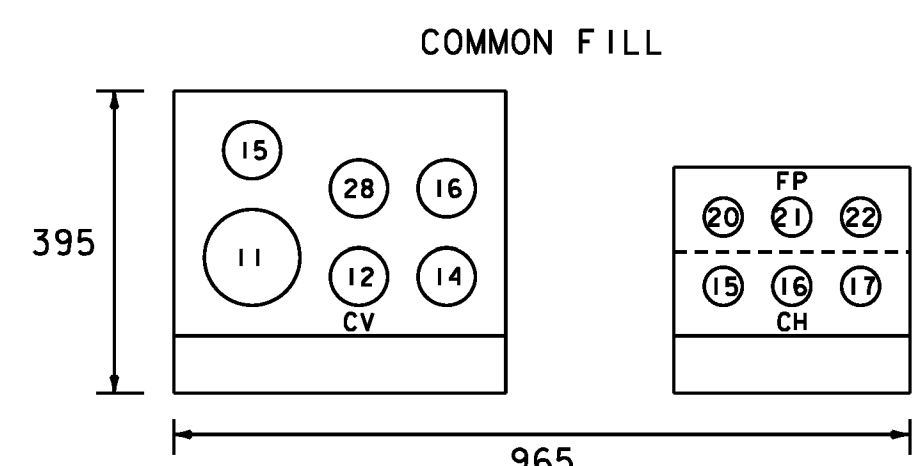
CONDUIT PER UTILITY IN DUCT:
 CHARTER - (1) 100
 CVPS - (1) 125
 FAIRPOINT - (1) 100
 SOVERNET - (1) 100



**UTILITY DUCT BANK
 TYPICAL SECTION 9**

N.T.S.
 2+024.7, RT - 2+041.6, RT
 DUCT LENGTH - 17.1m

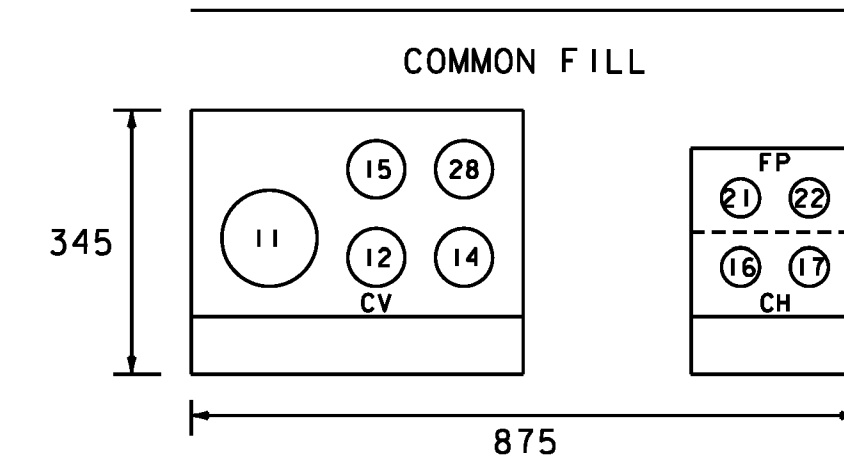
CONDUIT PER UTILITY IN DUCT:
 CHARTER - (3) 50
 CVPS - (1) 125
 FAIRPOINT - (5) 75
 SOVERNET - N/A



**UTILITY DUCT BANK
 TYPICAL SECTION 10**

N.T.S.
 2+058.4, RT - 2+078.2, RT
 DUCT LENGTH - 19.9m

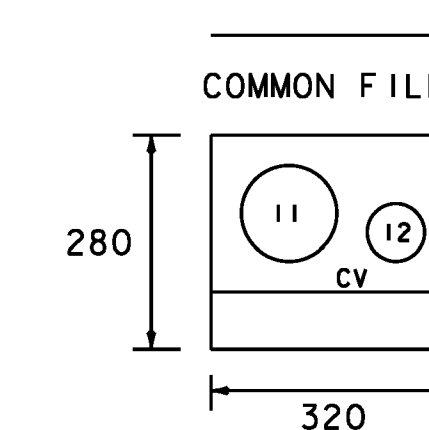
CONDUIT PER UTILITY IN DUCT:
 CHARTER - (2) 50
 CVPS - (1) 125
 FAIRPOINT - (4) 75
 SOVERNET - (2) 50



**UTILITY DUCT BANK
 TYPICAL SECTION 11**

N.T.S.
 2+081.6, RT - 2+090.7, RT
 DUCT LENGTH - 11.4m

CONDUIT PER UTILITY IN DUCT:
 CHARTER - N/A
 CVPS - (1) 125
 FAIRPOINT - (1) 75
 SOVERNET - N/A



**UTILITY DUCT BANK
 TYPICAL SECTION 12**

N.T.S.
 2+092.8, RT - 2+147.6, RT
 DUCT LENGTH - 65.8m

NOTES:
 1. DUCT BANK TYPICAL SECTIONS ARE NOT INTENDED TO DEPICT WHETHER THE DUCT IS CONCRETE ENCASED OR DIRECT BURY.
 2. ALL DIMENSIONS ARE IN MILLIMETERS UNLESS OTHERWISE NOTED.
 3. THE DIMENSIONS SHOWN SHALL BE CONSIDERED THE MINIMUM DUCT DIMENSIONS.
 4. EACH CONDUIT SHALL HAVE A MINIMUM OF 40 COVER IN ALL DIRECTIONS.

5. THE POWER AND COMMUNICATION CONDUIT SHALL BE SEPARATED BY A MINIMUM OF 300.
 6. 75 OF BEDDING MATERIAL SHALL BE PLACED BELOW EACH DUCT. BEDDING MATERIAL SHALL MEET GRADATION OF VTRANS SPECIFICATION 703.03, AND SHALL BE PAID INCIDENTAL TO DUCT ITEMS.
 7. THE VERTICAL DEPTH SHOWN REPRESENTS THE MINIMUM HEIGHT OF THE LARGEST DUCT IN DETAIL, INCLUDING BEDDING MATERIAL DEPTH.

8. THE DEPTH OF FILL OVER EACH DUCT VARIES IN ALL CASES.
 9. PAY LIMITS FOR TEMPORARY PAVEMENT PATCHING SHALL BE THE LENGTH OF PIPE TIMES THE WIDTH SHOWN IN THE DETAILS ABOVE.

**REPLACEMENT SHEETS
 ISSUED 02/24/2012**



PROJECT NAME: DANVILLE
 PROJECT NUMBER: F EGC 028-3(32)

FILE NAME: ...\\100 det.duct typical.pftf PLOT DATE: 2/24/2012
 DESIGN SUPERVISOR: GARY SANTY DRAWN BY: STANTEC
 DESIGNED BY: STANTEC CHECKED BY: STANTEC
 DUCT BANK TYPICAL SECTIONS DB-01 SHEET 213 OF 306