

**PARK STREET  
SEE SHEET UP-1**

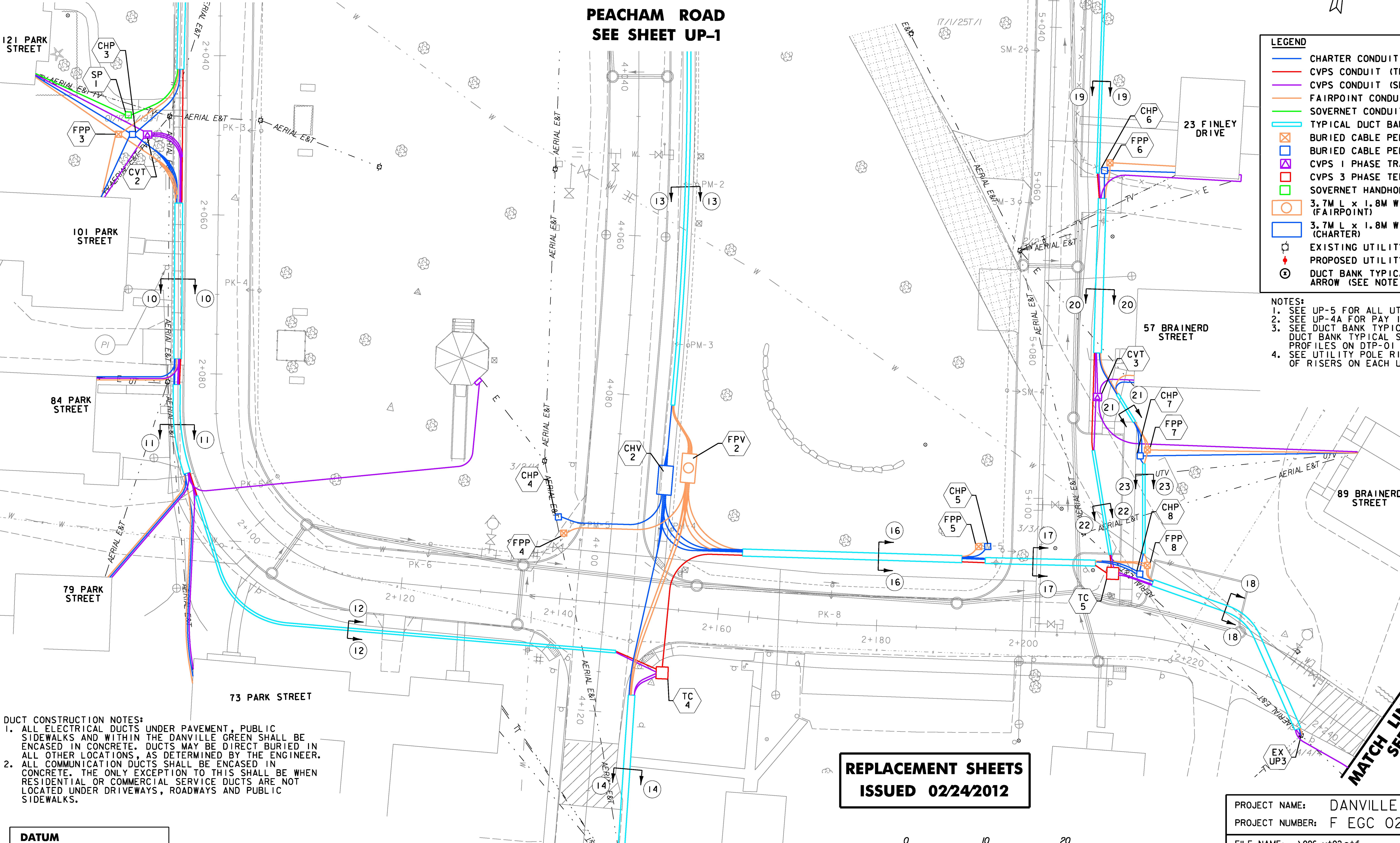
**PEACHAM ROAD  
SEE SHEET UP-1**

**SMITH STREET  
SEE SHEET UP-1**

**PEACHAM ROAD  
SEE SHEET UP-5**

LEGEND	
	CHARTER CONDUIT
	CVPS CONDUIT (TRANSMISSION)
	CVPS CONDUIT (SERVICE)
	FAIRPOINT CONDUIT
	SOVERNET CONDUIT
	TYPICAL DUCT BANK (SEE DETAILS)
	BURIED CABLE PEDESTAL (FAIRPOINT)
	BURIED CABLE PEDESTAL (CHARTER)
	CVPS 1 PHASE TRANSFORMER
	CVPS 3 PHASE TERMINATING CABINET
	SOVERNET HANDHOLE
	3.7M L x 1.8M W x 2.1M D 'J' TYPE VAULT (FAIRPOINT)
	3.7M L x 1.8M W x 2.1M D 'J' TYPE VAULT (CHARTER)
	EXISTING UTILITY POLE
	PROPOSED UTILITY POLE
	DUCT BANK TYPICAL SECTION #, WITH DIRECTION ARROW (SEE NOTE 3)

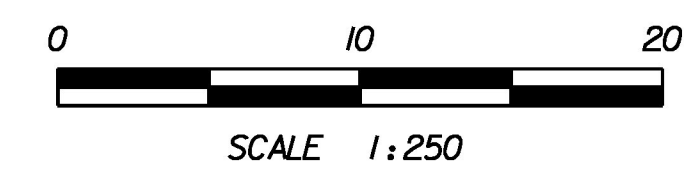
NOTES:  
 1. SEE UP-5 FOR ALL UTILITY RELOCATION NOTES.  
 2. SEE UP-4A FOR PAY ITEM AND CONDUIT SCHEDULE.  
 3. SEE DUCT BANK TYPICAL SECTION DB-01 AND DB-02 FOR DUCT BANK TYPICAL SECTIONS. SEE TYPICAL DUCT BANK PROFILES ON DTP-01 THROUGH DTP-04.  
 4. SEE UTILITY POLE RISER DETAILS RO-01 FOR LOCATION OF RISERS ON EACH UTILITY POLE.



**DUCT CONSTRUCTION NOTES:**  
 1. ALL ELECTRICAL DUCTS UNDER PAVEMENT, PUBLIC SIDEWALKS AND WITHIN THE DANVILLE GREEN SHALL BE ENCASED IN CONCRETE. DUCTS MAY BE DIRECT BURIED IN ALL OTHER LOCATIONS, AS DETERMINED BY THE ENGINEER.  
 2. ALL COMMUNICATION DUCTS SHALL BE ENCASED IN CONCRETE. THE ONLY EXCEPTION TO THIS SHALL BE WHEN RESIDENTIAL OR COMMERCIAL SERVICE DUCTS ARE NOT LOCATED UNDER DRIVEWAYS, ROADWAYS AND PUBLIC SIDEWALKS.

<b>DATUM</b>	
VERTICAL	NAVD88
HORIZONTAL	NAD83(92)

**REPLACEMENT SHEETS  
ISSUED 02/24/2012**



**MATCH LINE - STA. 2+245  
SEE SHEET UP-3**

PROJECT NAME:	DANVILLE	FILE NAME:	...\\096 ut02.ptf	PLOT DATE:	2/24/2012
PROJECT NUMBER:	F EGC 028-3(32)	DESIGN SUPERVISOR:	GARY SANTY	DRAWN BY:	STANTEC
		DESIGNED BY:	STANTEC	CHECKED BY:	STANTEC
		UTILITY PLAN	UP-2		SHEET 209 OF 306



2/24/2012 3:51:17 PM V:\953\cvt\ve\9530033\_0092\Construction\Final Changes\Underground Utility Revisions\096 ut02.ptf