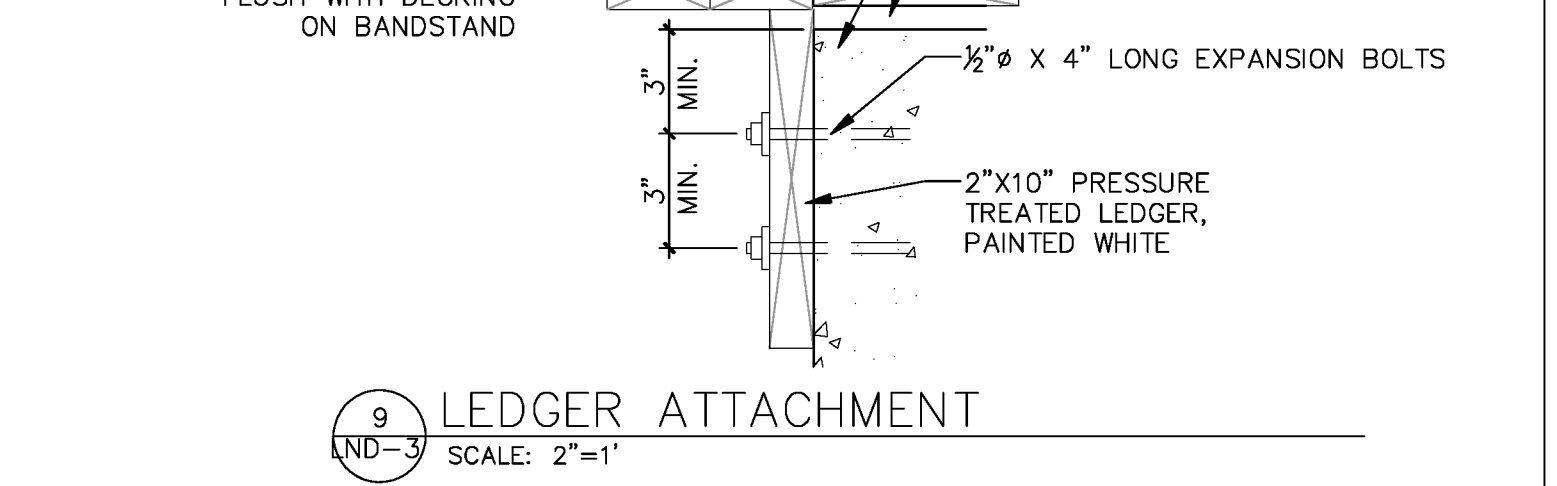
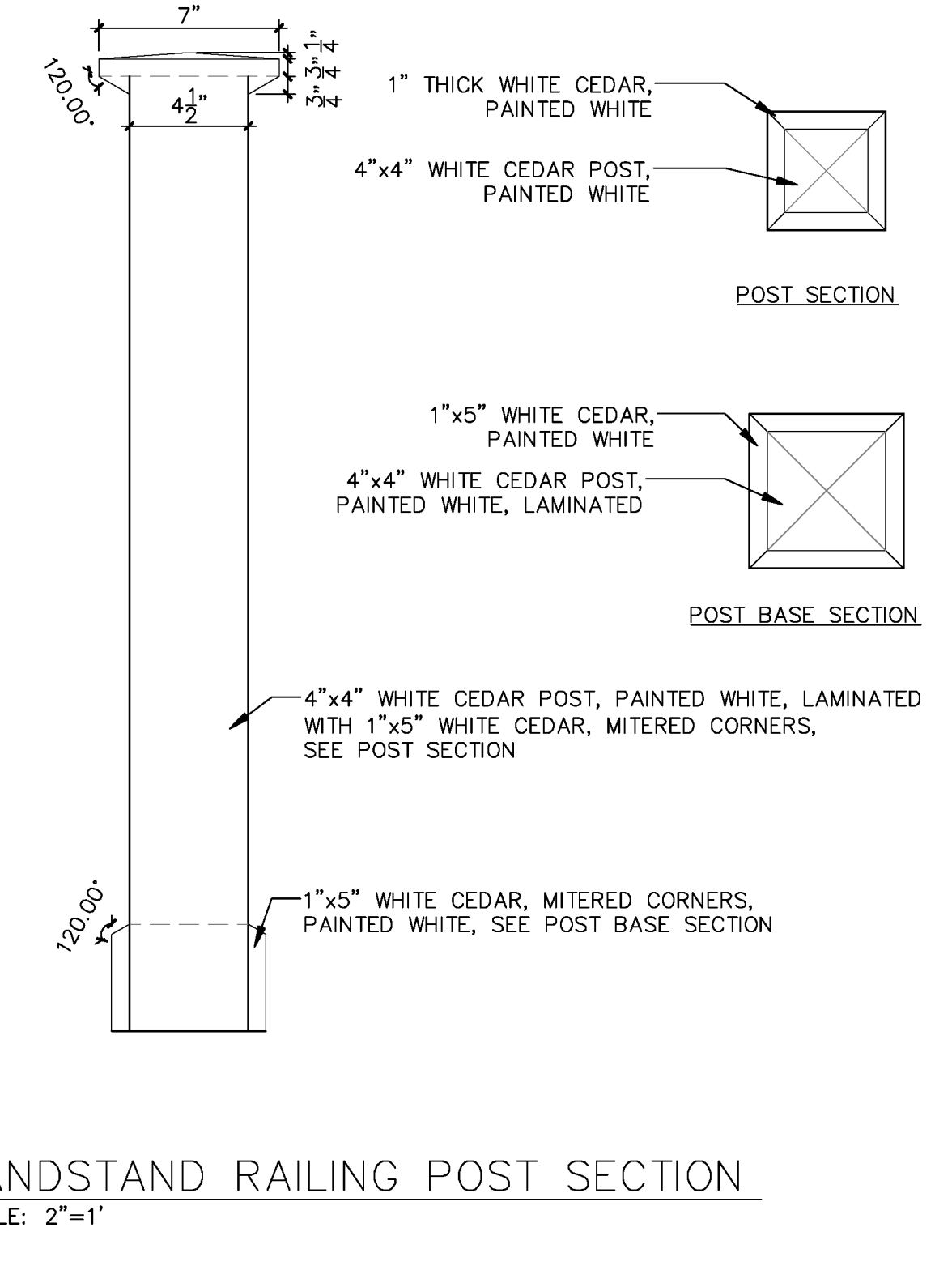
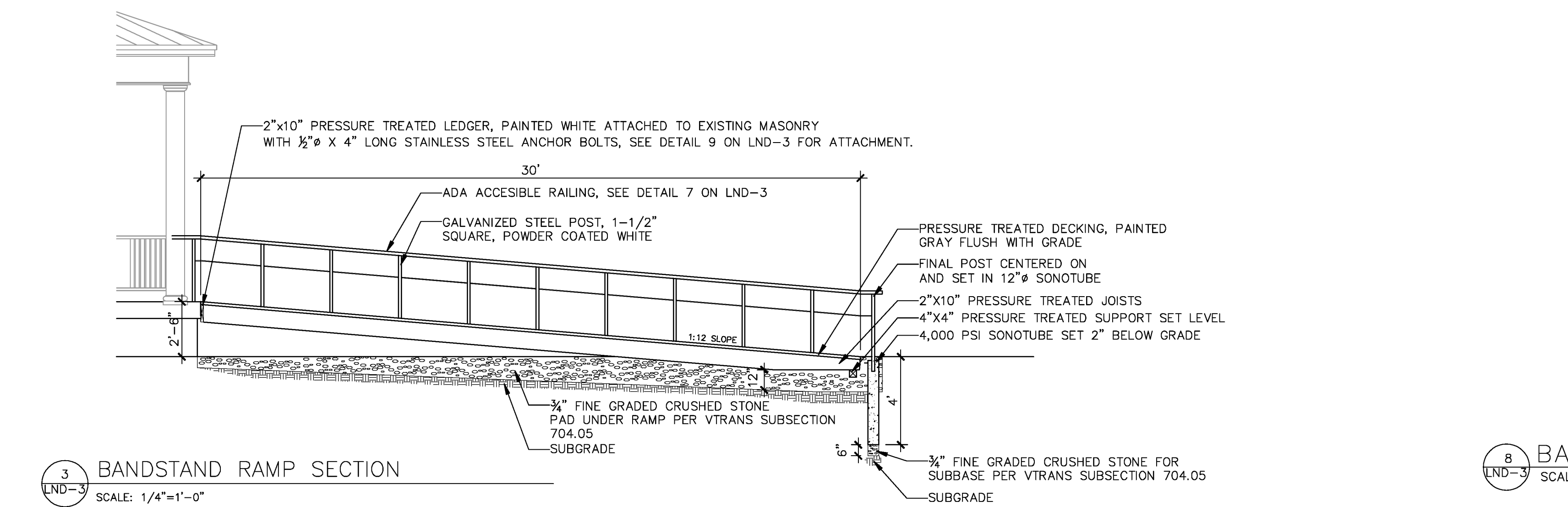
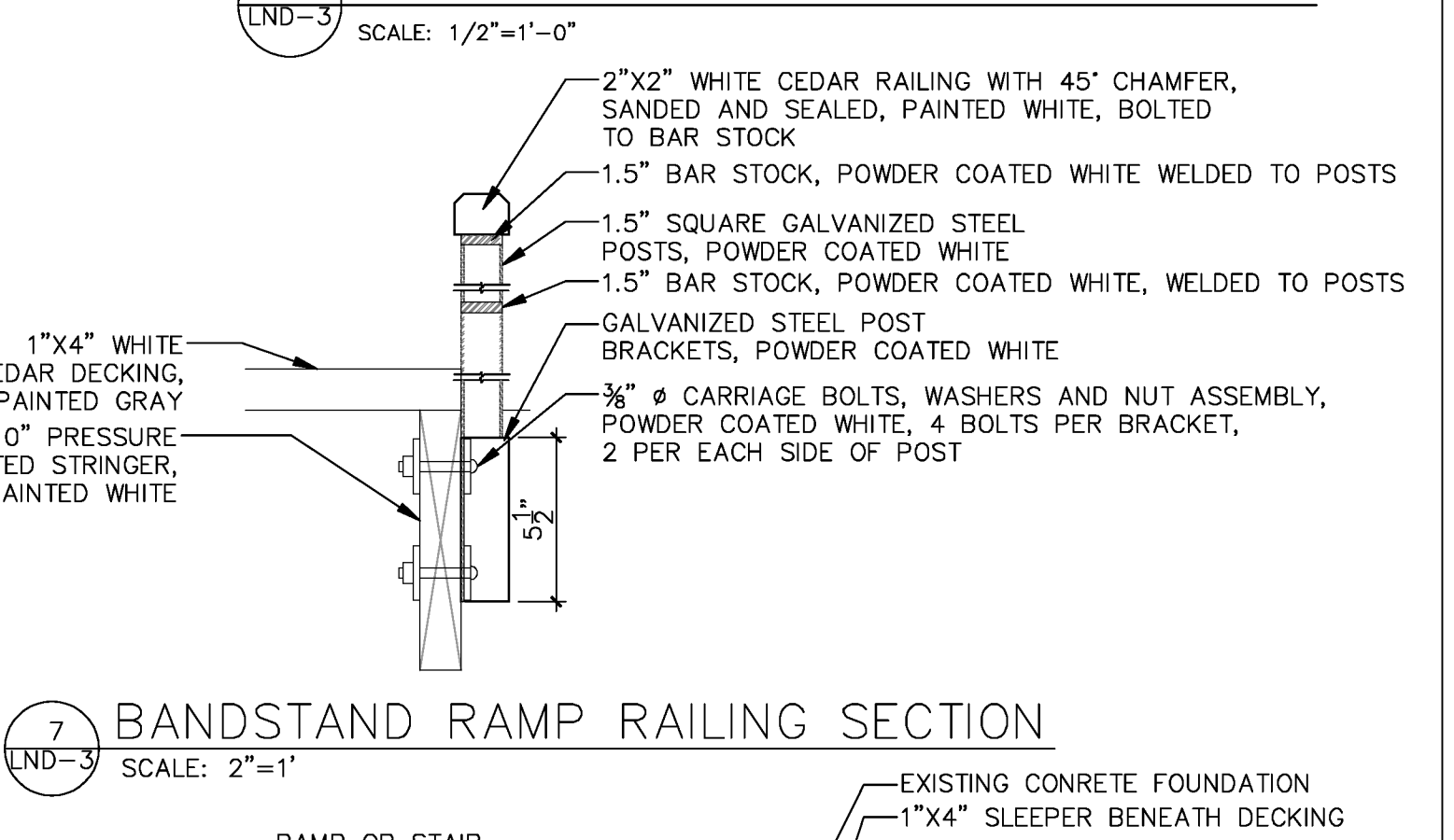
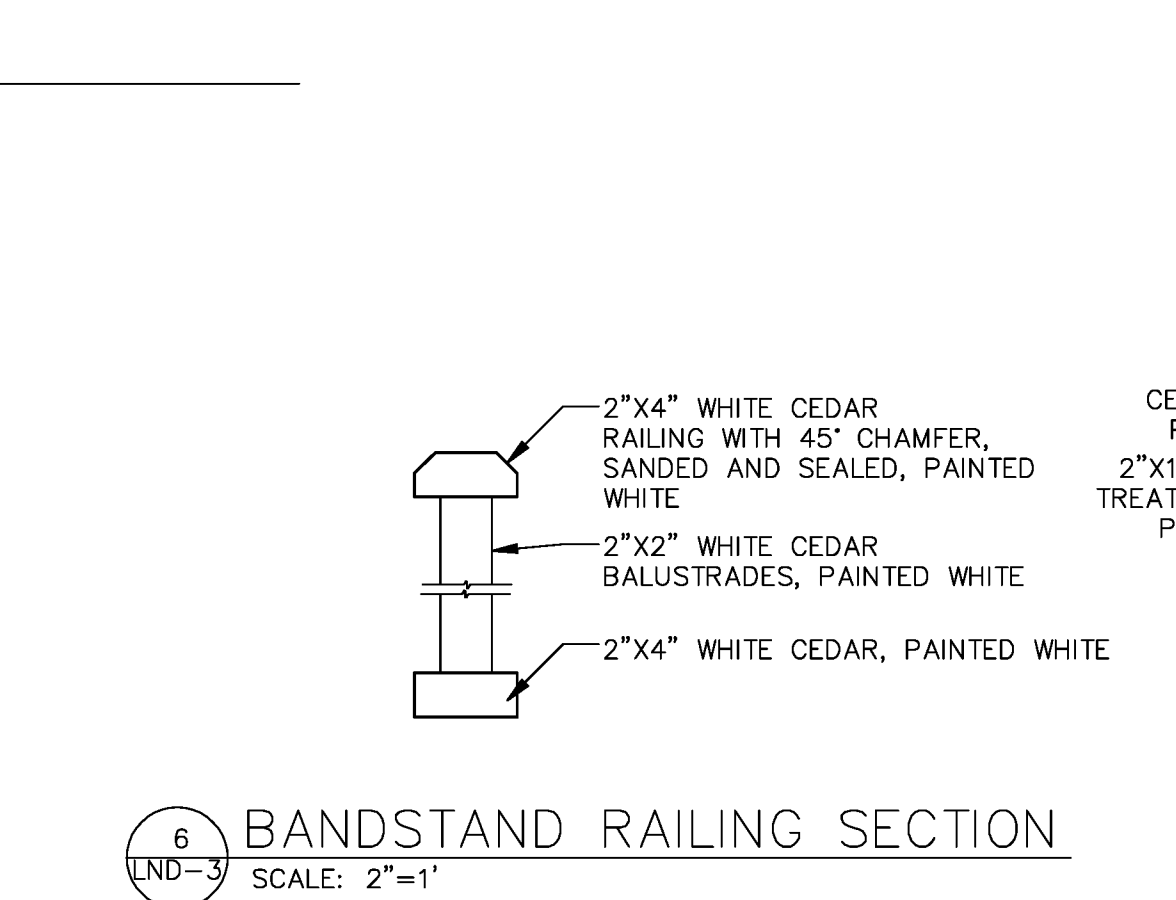
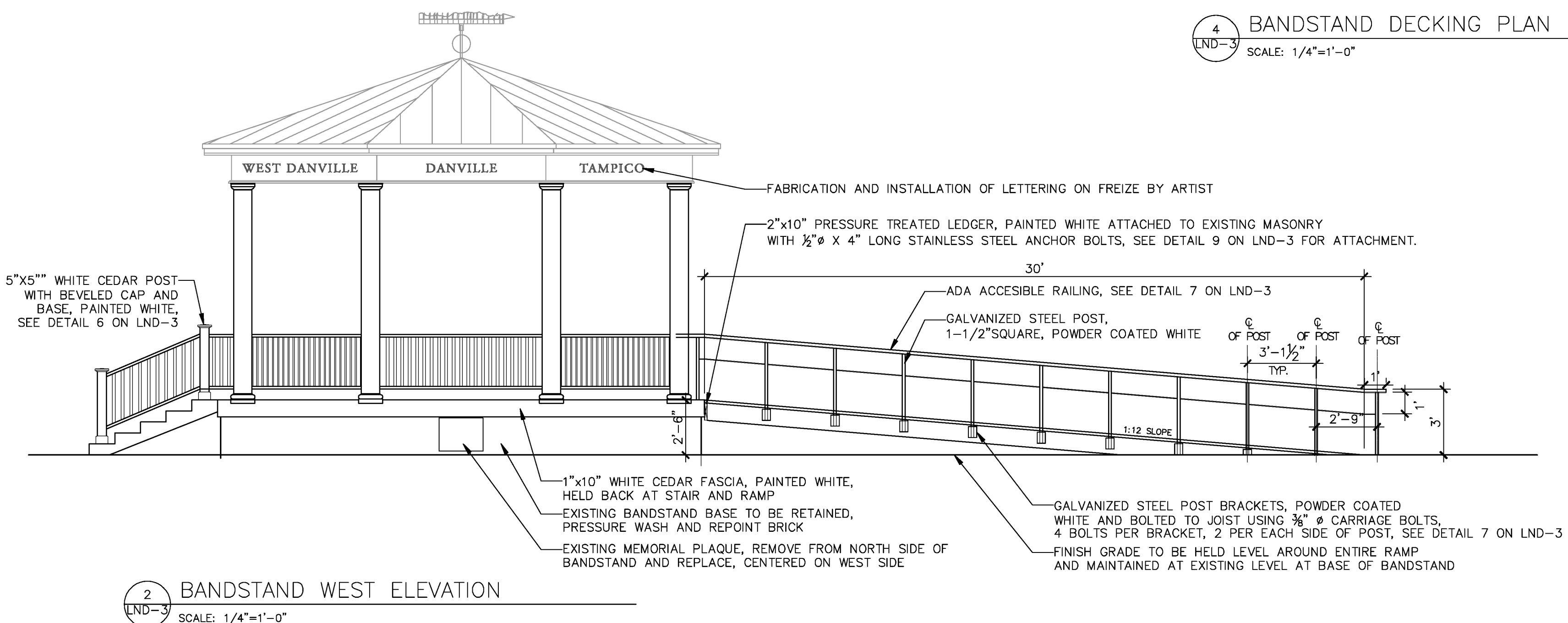
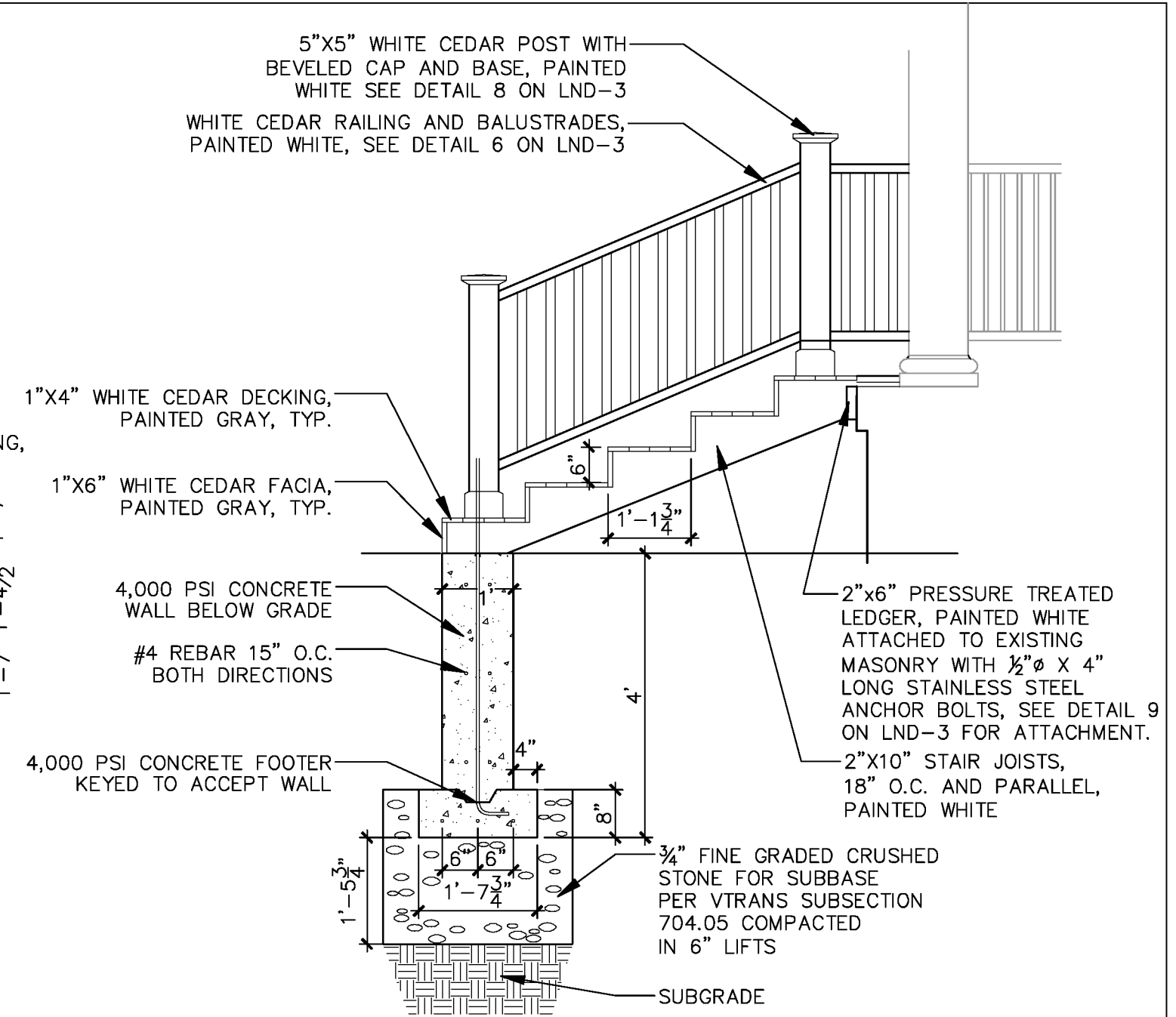
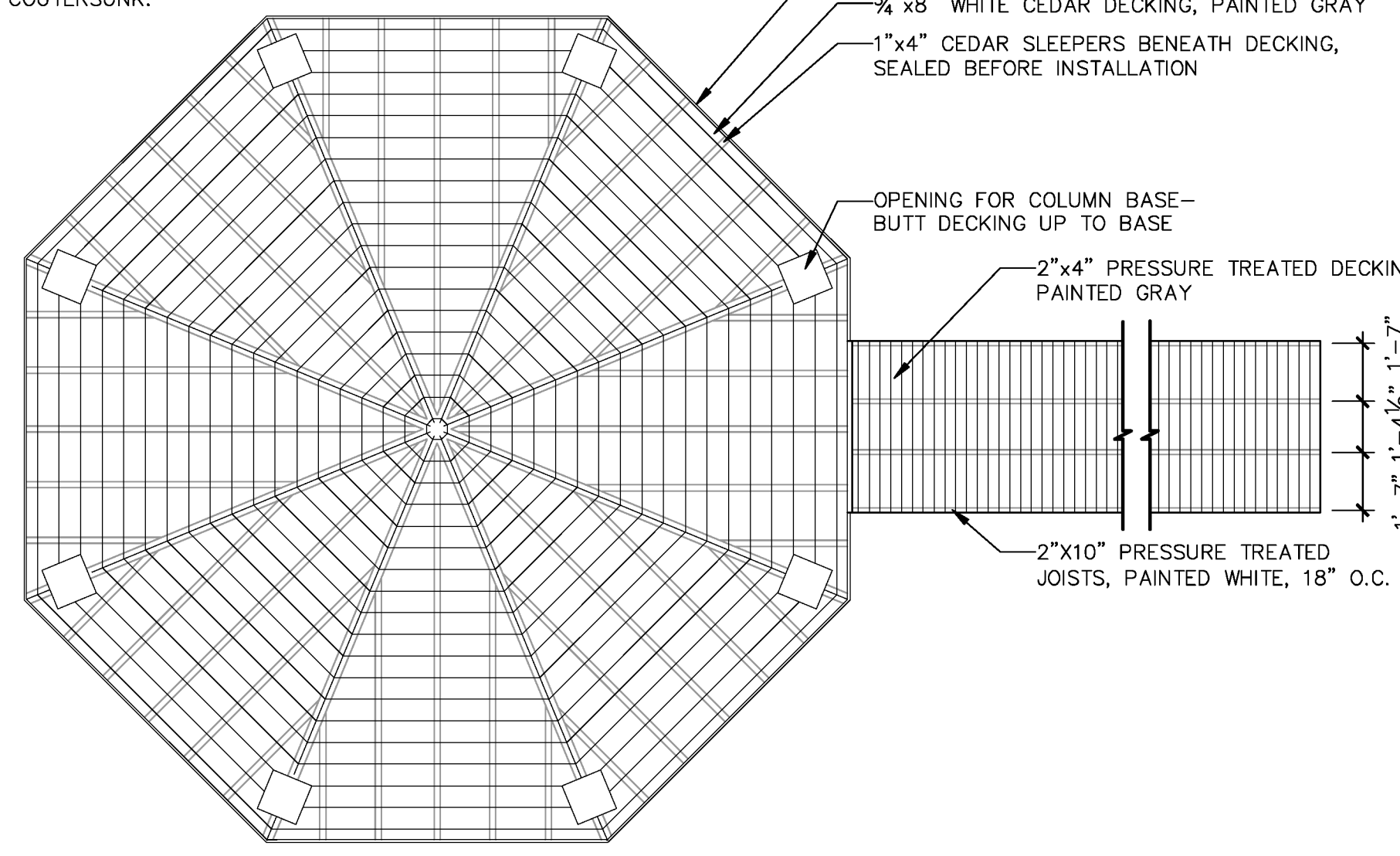


NOTES:  
1. ALL SLEEPERS TO BE ATTACHED USING 1/4" x 2" HOT-DIPPED GALVANIZED STEEL OR STAINLESS STEEL CONCRETE SCREWS INTO EXISTING CONCRETE BASE.  
2. ALL DECKING TO BE INSTALLED USING 1/4" x 2-1/2" DECK SCREWS, COUNTERSUNK.



LandWorks  
228 Maple St. suite 32  
Middlebury, VT 05753  
phone: 802.388.3011  
fax: 802.388.1950  
www.landworksvt.com

PROJECT NAME: DANVILLE	PLOT DATE: 1.19.2011
PROJECT NUMBER: F EGC 028-3(32)	DRAWN BY: RF
FILE NAME: LND 3ALT	DESIGNED BY: LANDWORKS
DESIGN SUPERVISOR: DR	CHECKED BY: DR
LANDSCAPE DETAILS SHEET LND-3	SHEET 197 OF 306