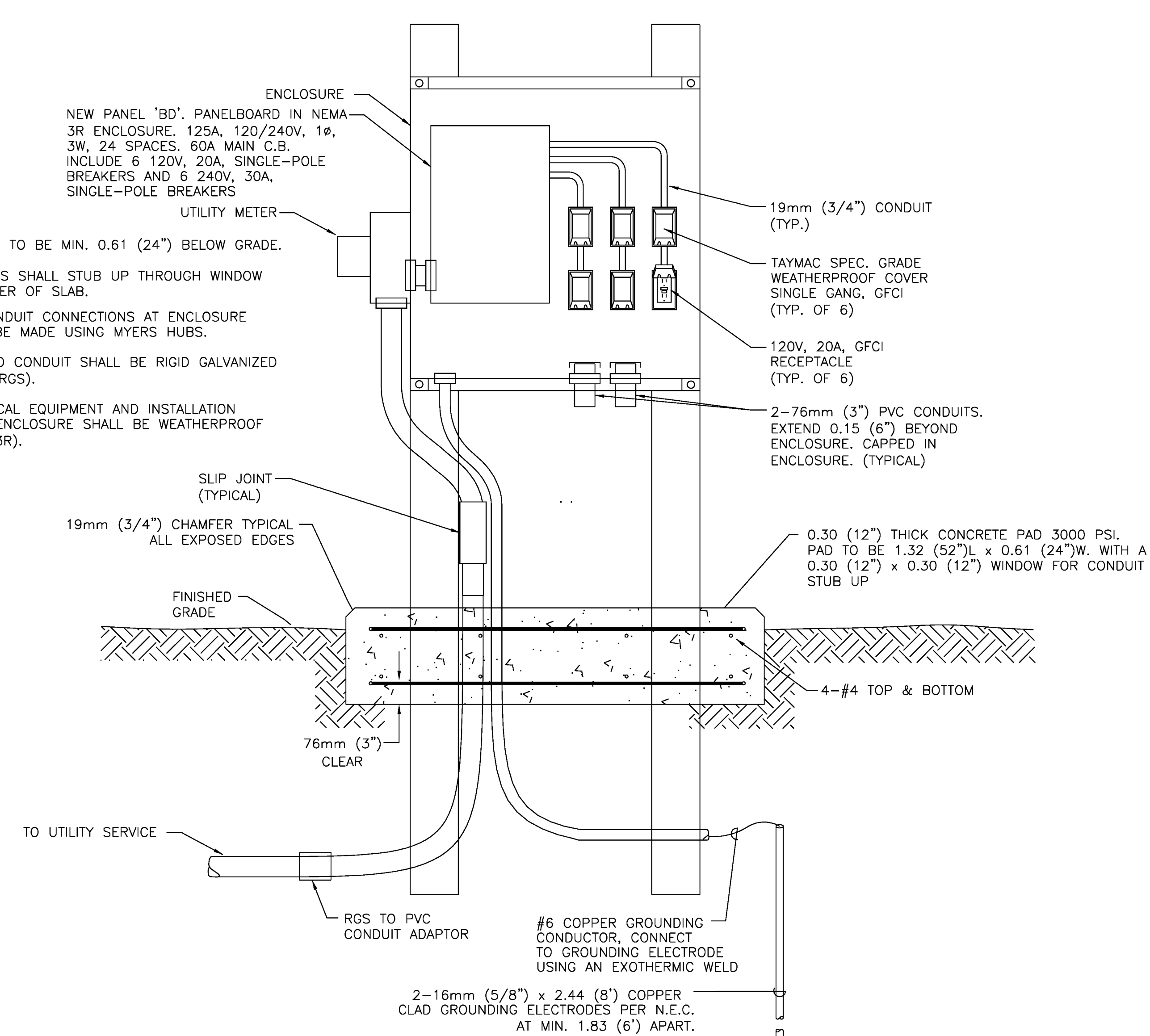


SIDE VIEW

NOTES:

1. CONDUIT TO BE MIN. 0.61 (24") BELOW GRADE.
2. CONDUITS SHALL STUB UP THROUGH WINDOW IN CENTER OF SLAB.
3. ALL CONDUIT CONNECTIONS AT ENCLOSURE SHALL BE MADE USING MYERS HUBS.
4. EXPOSED CONDUIT SHALL BE RIGID GALVANIZED STEEL (RGS).
5. ELECTRICAL EQUIPMENT AND INSTALLATION INSIDE ENCLOSURE SHALL BE WEATHERPROOF (NEMA 3R).



ELEVATION

NOTES:

1. ALL EXPOSED WOOD, STEEL, CONDUIT, ETC SHALL BE PAINTED (WITH A MINIMUM OF 2 COATS OF APPROPRIATE EXTERIOR PAINT) A COLOR AS DETERMINED BY THE ARCHITECT. PAYMENT TO BE INCIDENTAL TO ITEM 900.645 SPECIAL PROVISION (RECONSTRUCT BANDSTAND).
2. ALL DIMENSIONS ARE IN METERS UNLESS OTHERWISE NOTED.
3. SEE LIGHTING AND LANDSCAPE LLP-6 FOR LOCATION.
4. PEDESTAL INCLUDING ALL LABOR AND MATERIALS SHALL BE PAID UNDER ITEM 900.620 SPECIAL PROVISION (METER PEDESTAL).

BANDSTAND POWER PEDESTAL DETAIL

NOT TO SCALE

PROJECT NAME: DANVILLE
PROJECT NUMBER: F EGC 028-3(32)

FILE NAME: ...\\PlotFiles\\lighting-det07.ptf PLOT DATE: 1/18/2011
DESIGN SUPERVISOR: GARY SANTY DRAWN BY: STANTEC
DESIGNED BY: STANTEC CHECKED BY: STANTEC
LIGHTING DETAILS SHEET LTD-7 SHEET 194 OF 306

