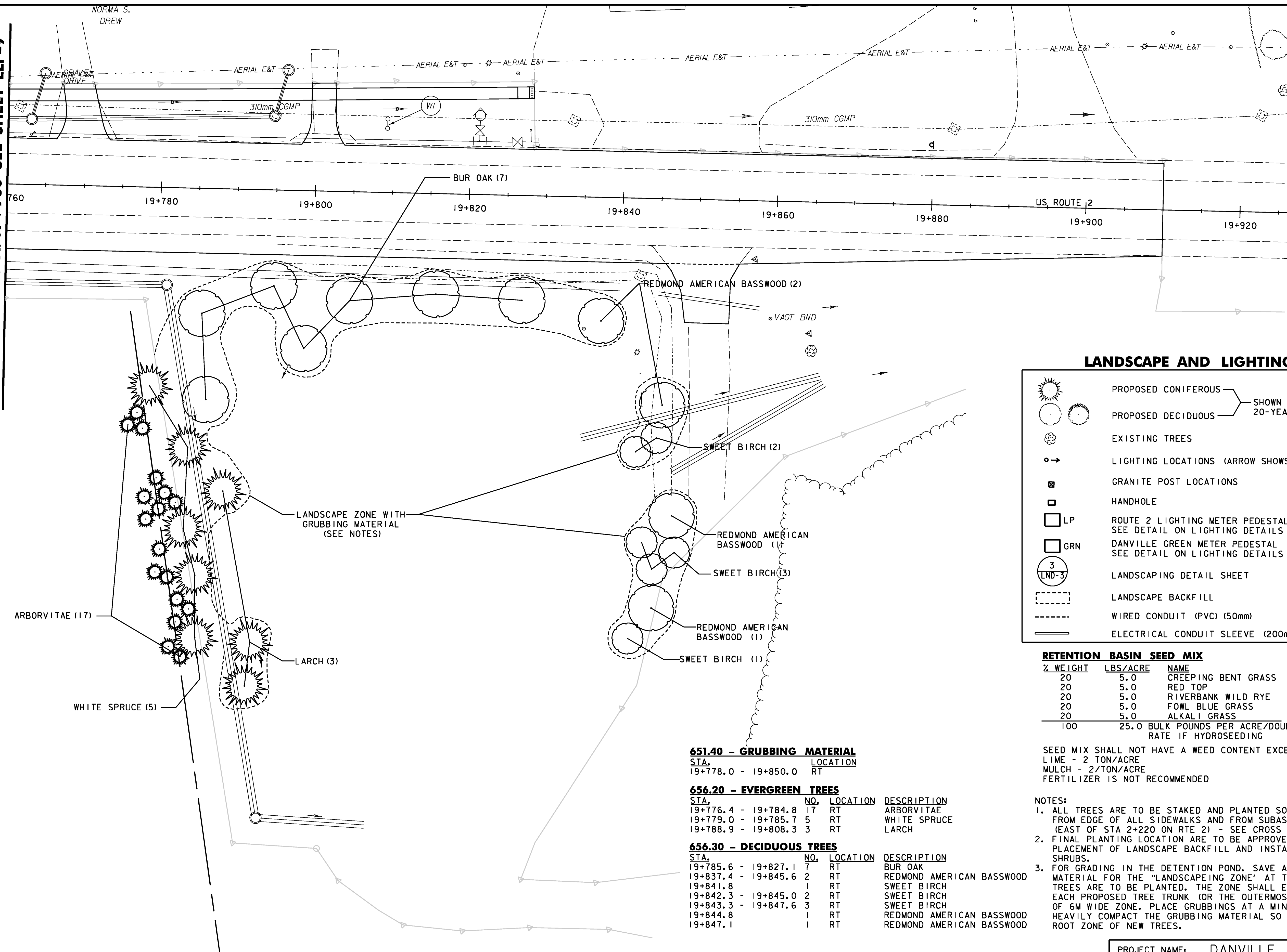


MATCH LINE - STA. 19+760 SEE SHEET LLP-9



**LANDSCAPE AND LIGHTING LEGEND**

	PROPOSED CONIFEROUS	} SHOWN AT APPROXIMATE 20-YEAR GROWTH SPREAD
	PROPOSED DECIDUOUS	
	EXISTING TREES	
	LIGHTING LOCATIONS (ARROW SHOWS DISTRIBUTION DIRECTION)	
	GRANITE POST LOCATIONS	
	HANDHOLE	
	ROUTE 2 LIGHTING METER PEDESTAL SEE DETAIL ON LIGHTING DETAILS SHEET LTD-6	
	DANVILLE GREEN METER PEDESTAL SEE DETAIL ON LIGHTING DETAILS SHEET LTD-6	
	LANDSCAPING DETAIL SHEET	
	LANDSCAPE BACKFILL	
	WIRED CONDUIT (PVC) (50mm)	
	ELECTRICAL CONDUIT SLEEVE (200mm) (PVC)	

**RETENTION BASIN SEED MIX**

% WEIGHT	LBS/ACRE	NAME
20	5.0	CREeping BENT GRASS
20	5.0	RED TOP
20	5.0	RIVERBANK WILD RYE
20	5.0	FOWL BLUE GRASS
20	5.0	ALKALI GRASS
100	25.0	BULK POUNDS PER ACRE/DOUBLE SEED RATE IF HYDROSEEDING

SEED MIX SHALL NOT HAVE A WEED CONTENT EXCEEDING 40% BY WEIGHT  
 LIME - 2 TON/ACRE  
 MULCH - 2/TON/ACRE  
 FERTILIZER IS NOT RECOMMENDED

**NOTES:**

- ALL TREES ARE TO BE STAKED AND PLANTED SO TRUNK IS A MINIMUM OF 1M FROM EDGE OF ALL SIDEWALKS AND FROM SUBASE FOR FUTURE SIDEWALK (EAST OF STA 2+220 ON RTE 2) - SEE CROSS SECTIONS.
- FINAL PLANTING LOCATION ARE TO BE APPROVED BY VTTRANS PRIOR TO PLACEMENT OF LANDSCAPE BACKFILL AND INSTALLATION OF ALL TREES AND SHRUBS.
- FOR GRADING IN THE DETENTION POND, SAVE AND REUSE 651.40 GRUBBING MATERIAL FOR THE "LANDSCAPING ZONE" AT THE TOP OF BANK WHERE ALL TREES ARE TO BE PLANTED. THE ZONE SHALL EXTEND OUT 3 METERS FROM EACH PROPOSED TREE TRUNK (OR THE OUTERMOST IN A GROUP) OR A MINIMUM OF 6M WIDE ZONE. PLACE GRUBBINGS AT A MINIMUM DEPTH OF .5M. DO NOT HEAVILY COMPACT THE GRUBBING MATERIAL SO AS NOT TO RESTRICT THE ROOT ZONE OF NEW TREES.

STA 19+760 TO 19+910

**651.40 - GRUBBING MATERIAL**

STA.	LOCATION
19+778.0 - 19+850.0	RT

**656.20 - EVERGREEN TREES**

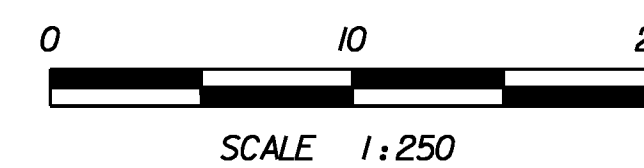
STA.	NO.	LOCATION	DESCRIPTION
19+776.4 - 19+784.8	17	RT	ARBORVITAE
19+779.0 - 19+785.7	5	RT	WHITE SPRUCE
19+788.9 - 19+808.3	3	RT	LARCH

**656.30 - DECIDUOUS TREES**

STA.	NO.	LOCATION	DESCRIPTION
19+785.6 - 19+827.1	7	RT	BUR OAK
19+837.4 - 19+845.6	2	RT	REDMOND AMERICAN BASSWOOD
19+841.8	1	RT	SWEET BIRCH
19+842.3 - 19+845.0	2	RT	SWEET BIRCH
19+843.3 - 19+847.6	3	RT	SWEET BIRCH
19+844.8	1	RT	REDMOND AMERICAN BASSWOOD
19+847.1	1	RT	REDMOND AMERICAN BASSWOOD

<b>DATUM</b>	
VERTICAL	NAVD88
HORIZONTAL	NAD83(92)

**REPLACEMENT SHEETS  
ISSUED 02/24/2012**



PROJECT NAME:	DANVILLE
PROJECT NUMBER:	F EGC 028-3(32)
FILE NAME:	...PlotFiles\086 110.prf
DESIGN SUPERVISOR:	GARY SANTY
DESIGNED BY:	STANTEC
LANDSCAPE & LIGHTING PLAN LLP-10	
PLOT DATE:	2/24/2012
DRAWN BY:	STANTEC
CHECKED BY:	STANTEC
SHEET	186 OF 306