

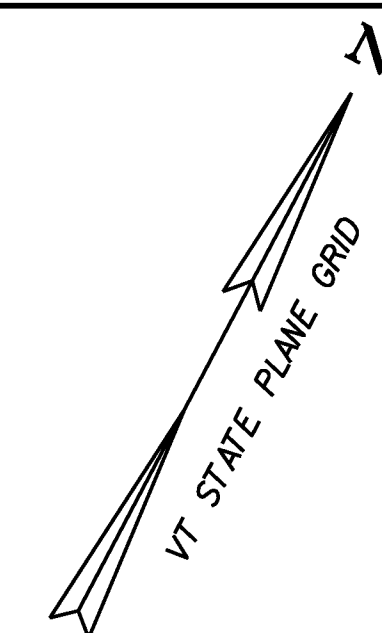
**LANDSCAPE AND LIGHTING LEGEND**

	PROPOSED CONIFEROUS	} SHOWN AT APPROXIMATE 20-YEAR GROWTH SPREAD
	PROPOSED DECIDUOUS	
	EXISTING TREES	
	LIGHTING LOCATIONS (ARROW SHOWS DISTRIBUTION DIRECTION)	
	GRANITE POST LOCATIONS	
	HANDHOLE	
	ROUTE 2 LIGHTING METER PEDESTAL SEE DETAIL ON LIGHTING DETAILS SHEET LTD-6	
	DANVILLE GREEN METER PEDESTAL SEE DETAIL ON LIGHTING DETAILS SHEET LTD-6	
	LANDSCAPING DETAIL SHEET	
	LANDSCAPE BACKFILL	
	WIRED CONDUIT (PVC) (50mm)	
	ELECTRICAL CONDUIT SLEEVE (200mm) (PVC)	

**678.26 - JUNCTION BOX**  
HAND HOLE NO. LOCATION  
HH-15 19+523.50, 6.39M LT

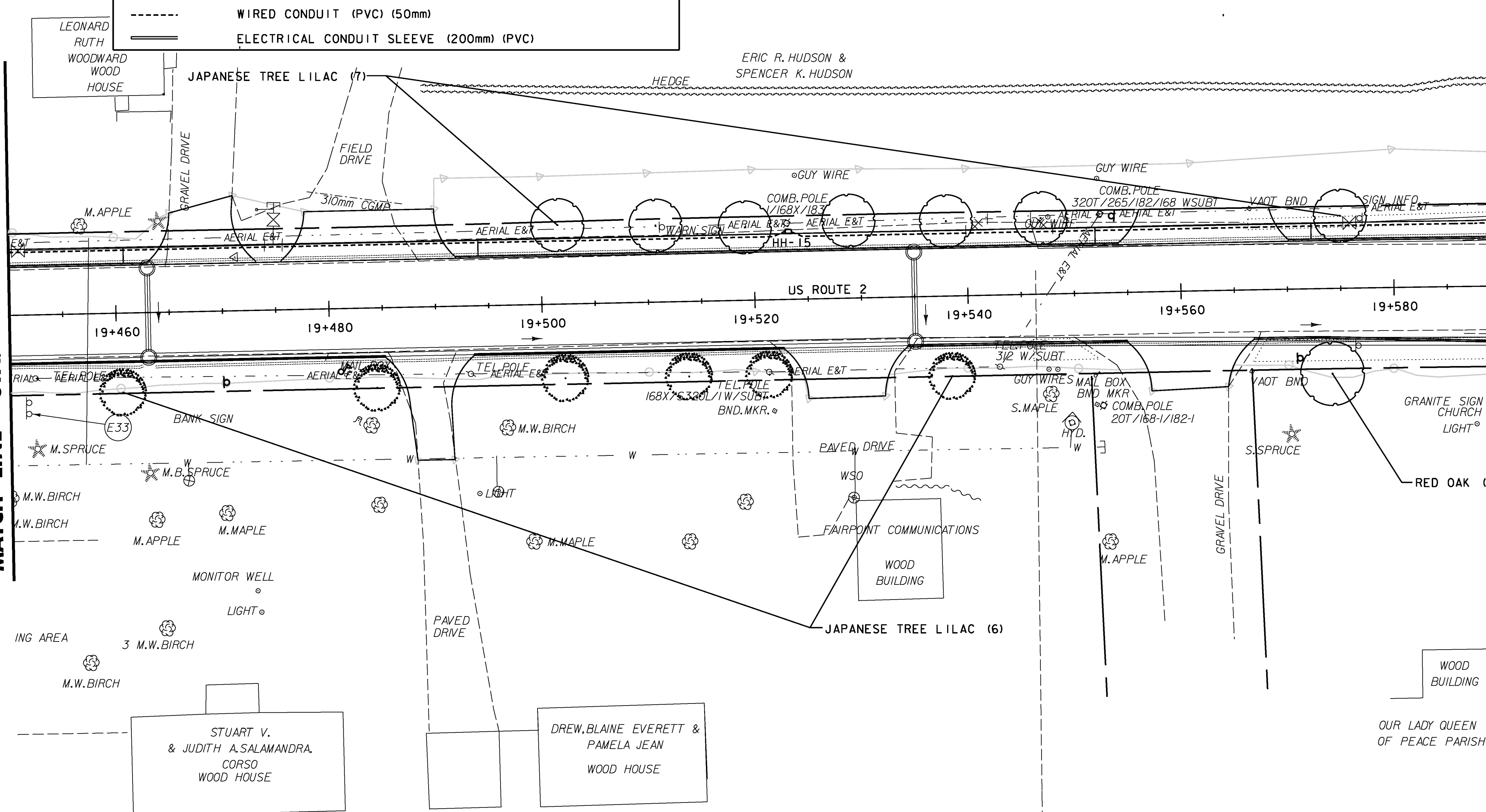
**656.30 - DECIDUOUS TREES**

STA.	NO.	LOCATION	DESCRIPTION
19+460.5 - 19+538.4	6	RT	JAPANESE TREE LILAC
19+501.6 - 19+575.0	7	LT	JAPANESE TREE LILAC
19+574.1	1	RT	RED OAK



MATCH LINE - STA. 19+450 SEE SHEET LLP-7

MATCH LINE - STA. 19+590 SEE SHEET LLP-9

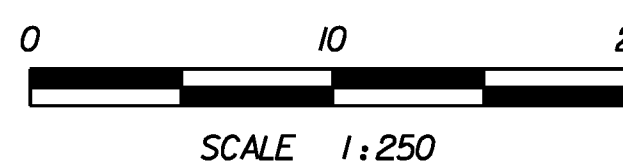


**REPLACEMENT SHEETS  
ISSUED 02/24/2012**

STA 19+450 TO 19+590

**DATUM**  
VERTICAL NAVD88  
HORIZONTAL NAD83(92)

- NOTES:
- ALL TREES ARE TO BE STAKED AND PLANTED SO TRUNK IS A MINIMUM OF 1M FROM EDGE OF ALL SIDEWALKS AND FROM SUBBASE FOR FUTURE SIDEWALK (EAST OF STA 2+220 ON RTE 2) - SEE CROSS SECTIONS.
  - FINAL PLANTING LOCATION ARE TO BE APPROVED BY VTRANS PRIOR TO PLACEMENT OF LANDSCAPE BACKFILL AND INSTALLATION OF ALL TREES AND SHRUBS.



PROJECT NAME: DANVILLE  
PROJECT NUMBER: F EGC 028-3(32)  
FILE NAME: ...\\PlotFiles\084 1108.ptf  
DESIGN SUPERVISOR: GARY SANTY  
DESIGNED BY: STANTEC  
**LANDSCAPE & LIGHTING PLAN LLP-8**

PLOT DATE: 2/24/2012  
DRAWN BY: STANTEC  
CHECKED BY: STANTEC  
SHEET 184 OF 306