

- NOTES:
1. GRANITE POST LOCATIONS TO BE VERIFIED IN FIELD BY ARTIST.
  2. ALL TREES ARE TO BE STAKED AND PLANTED SO TRUNK IS A MINIMUM OF 1M FROM EDGE OF ALL SIDEWALKS AND FROM SUBBASE FOR FUTURE SIDEWALK (EAST OF STA 2+220 ON RTE 2) - SEE CROSS SECTIONS.
  3. FINAL PLANTING LOCATION ARE TO BE APPROVED BY VTRANS PRIOR TO PLACEMENT OF LANDSCAPE BACKFILL AND INSTALLATION OF ALL TREES AND SHRUBS.
  4. EXISTING UNDISTURBED AREAS IN THE DANVILLE GREEN SHALL ONLY BE ACCESSED FOR IMMEDIATE CONSTRUCTION AS SHOWN ON THE CONSTRUCTION PLAN SHEETS.
  5. FOR AMPITHEATER PLANTING SEE LANDSCAPING DETAIL 3 ON SHEET LND-4 & 5. USE PROJECT GRUBBINGS FROM REGRADING OF DANVILLE GREEN TO A DEPTH OF 0.5M OR USE 755.1 APPROVED LANDSCAPING BACKFILL. FINAL LOCATION AND PLANTING MATERIAL TO BE APPROVED BY VTRANS PRIOR TO PLANTING.

MATCH LINE - STA. 5+022 SEE SHEET LLP-5

MATCH LINE - STA. 4+035 SEE SHEET LLP-5

**900.620 - SPECIAL PROVISION (GRANITE POST) - SEE NOTE 1**

STA.	LOCATION	DESCRIPTION
4+077.3	RT	GRANITE POST #19
2+135.9	LT	GRANITE POST #18
2+155.3	LT	GRANITE POST #17
2+209.4	LT	GRANITE POST #20
4+049.8	LT	GRANITE POST #14
4+057.9	LT	GRANITE POST #15

**679.45 - LIGHT POLE**

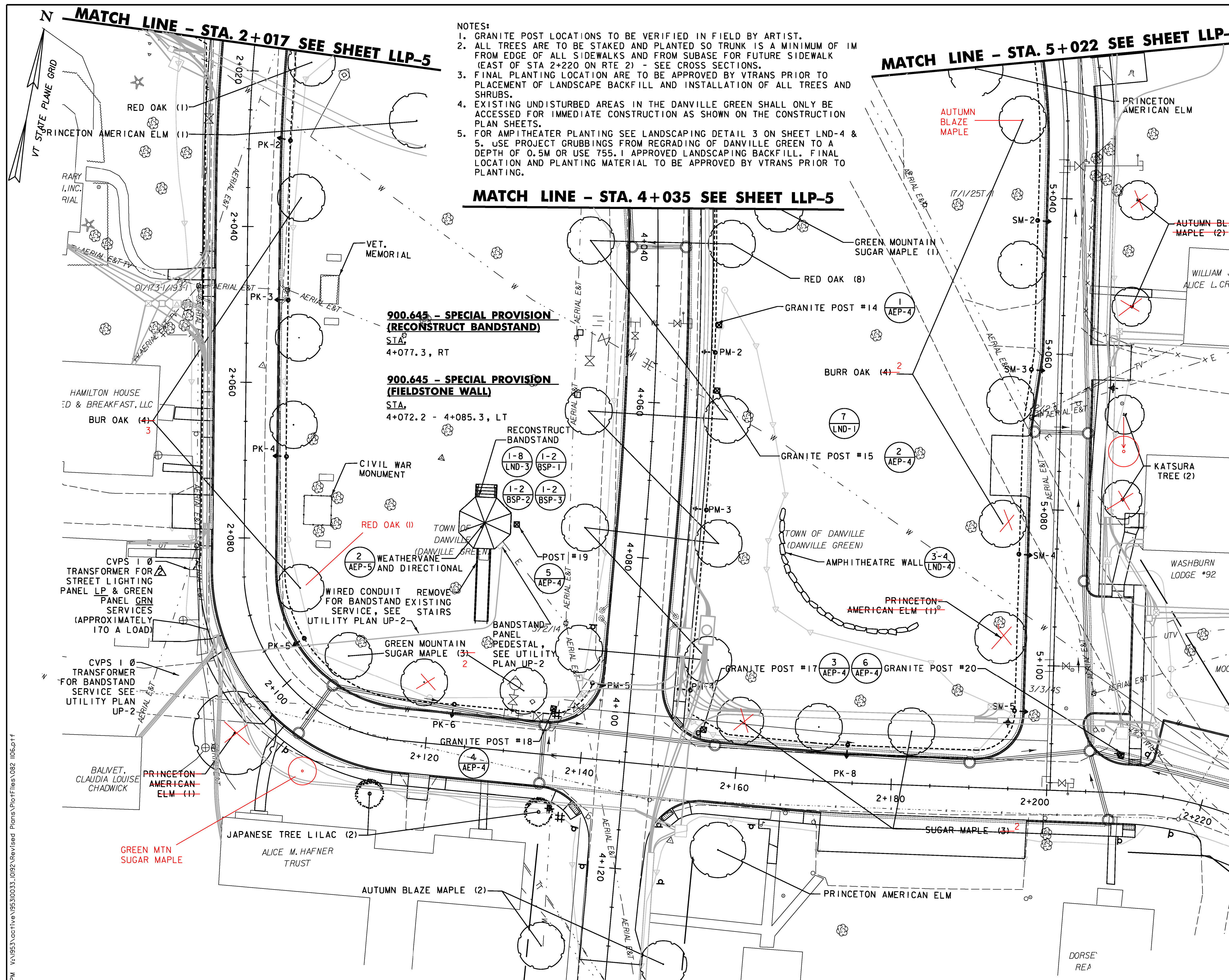
POLE NO.	LOCATION	FIX. TYPE	WAITS	TYPE	MOUNT. HEIGHT	VR	R
PK-2	2+029.00, 5.25M LT	A	100	III	4.27M	Y	Y
PK-3	2+049.50, 5.25M LT	A	100	III	4.27M	Y	Y
PK-4	2+069.50, 5.25M LT	A	100	III	4.27M	Y	Y
PK-5	2+096.00, 5.25M LT	A	100	III	4.27M	Y	Y
PK-6	2+123.00, 5.25M LT	A	100	III	4.27M	Y	Y
PK-8	2+174.00, 4.80M LT	A	100	III	4.27M	Y	Y
PM-2	4+053.50, 6.03M LT	A	100	III	4.27M	Y	Y
PM-3	4+073.00, 6.03M LT	A	100	III	4.27M	Y	Y
PM-4	4+096.50, 6.06M LT	A	100	III	4.27M	Y	Y
PM-5	4+096.50, 4.97M RT	A	100	III	4.27M	Y	Y
SM-2	5+043.00, 3.60M RT	A	100	III	4.27M	Y	Y
SM-3	5+062.00, 3.87M RT	A	100	III	4.27M	Y	Y
SM-4	5+086.00, 4.80M RT	A	100	III	4.27M	Y	Y
SM-5	5+106.00, 4.80M RT	A	100	III	4.27M	Y	Y

**656.20 - EVERGREEN TREES**

STA.	NO.	LOCATION	DESCRIPTION
2+030.5	1	LT	WHITE SPRUCE

**656.30 - DECIDUOUS TREES**

STA.	NO.	LOCATION	DESCRIPTION
2+018.4	1	LT	RED OAK
2+025.4	1	LT	PRINCETON AMERICAN ELM
2+036.2	3-4	LT	BUR OAK
<del>2+083.3</del>	<del>2</del>	RT	<del>PRINCETON AMERICAN ELM</del>
2+104.1	2-3	LT	GREEN MOUNTAIN SUGAR MAPLE
2+114.2	2	RT	JAPANESE TREE LILAC
2+158.7	1	RT	PRINCETON AMERICAN ELM
2+160.0	3	LT	GREEN MOUNTAIN SUGAR MAPLE
4+035.1	1	LT	GREEN MOUNTAIN SUGAR MAPLE
4+039.2	8	RT-LT	RED OAK
<del>4+130.7</del>	<del>4</del>	RT-LT	<del>AUTUMN BLAZE MAPLE</del>
5+021.8	1	RT	PRINCETON AMERICAN ELM
5+029.6	2-4	LT	BUR OAK
5+039.8	3	RT	AUTUMN BLAZE MAPLE
5+067.4	1-2	LT	KATSURA TREE
<del>5+096.6</del>	<del>1</del>	RT	<del>PRINCETON AMERICAN ELM</del>
2+108.4	1	RT	GRN MTN SUGAR MAPLE
2+090	1	LT	RED OAK
5+020	1	RT	AUTUMN BLAZE MAPLE



**DATUM**

VERTICAL	NAVD88
HORIZONTAL	NAD83(92)

**REPLACEMENT SHEETS  
ISSUED 02/24/2012**



PROJECT NAME:	DANVILLE	FILE NAME:	... \PlotFiles\082 1106.p1f	PLOT DATE:	2/24/2012
PROJECT NUMBER:	F EGC 028-3(32)	DESIGNED BY:	STANTEC	CHECKED BY:	STANTEC
		LANDSCAPE & LIGHTING PLAN LLP-6		SHEET	182 OF 306

2/24/2012 11:57 PM V:\9533\active\95330033\_0192\Revised Plans\PlotFiles\082 1106.p1f