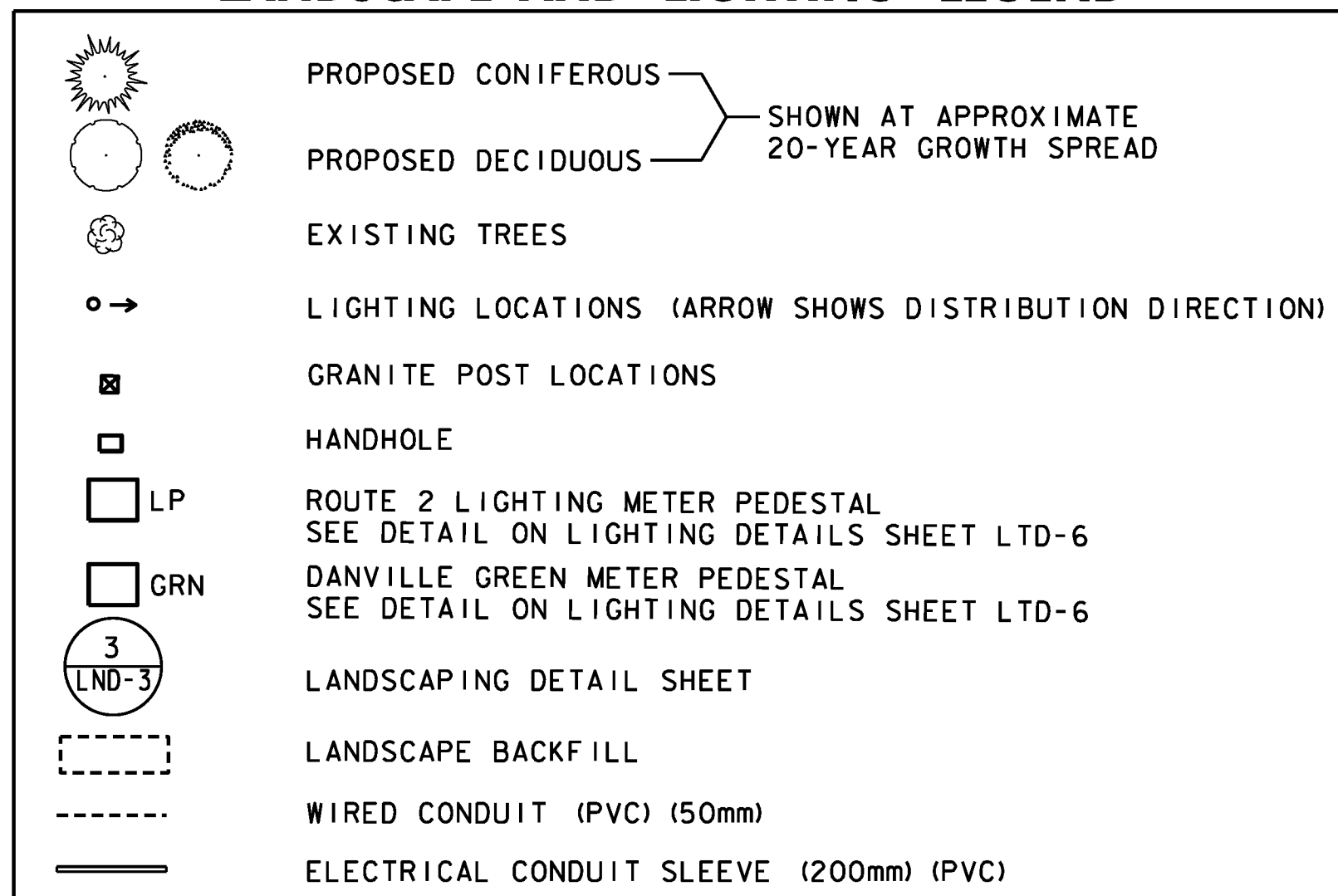


**LANDSCAPE AND LIGHTING LEGEND**



**679.45 - LIGHT POLE**

POLE NO.	LOCATION	FIXTURE TYPE	WATTS	TYPE	MOUNTING HEIGHT
SL-20	18+765.00, 5.70M RT	B	175	III	5.48M

**678.26 - JUNCTION BOX**

HAND HOLE NO.	LOCATION
HH-3	18+713.00, 5.70M RT.

**656.80 - LANDSCAPE BACKFILL, TRUCK MEASUREMENT**

STA.	LENGTH X WIDTH X DEPTH
18+600.0 - 18+601 RT	1M X 3M X 0.5M
18+618.5 - 18+635 RT	16.5M X 3M X 0.5M

**656.30 - DECIDUOUS TREES**

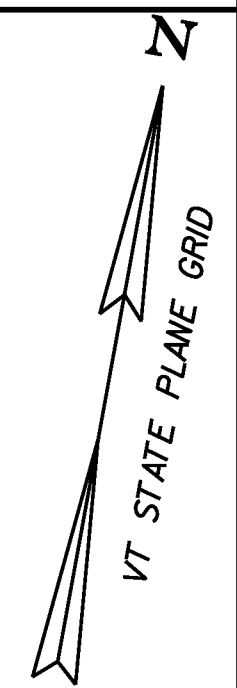
STA.	NO.	LOCATION	DESCRIPTION
18+621.3	1	RT	JAPANESE TREE LILAC
18+618.6 - 18+660.9	3	LT	JAPANESE TREE LILAC
18+677.7 - 18+760.5	6	RT	RED OAK

**656.20 - EVERGREEN TREES**

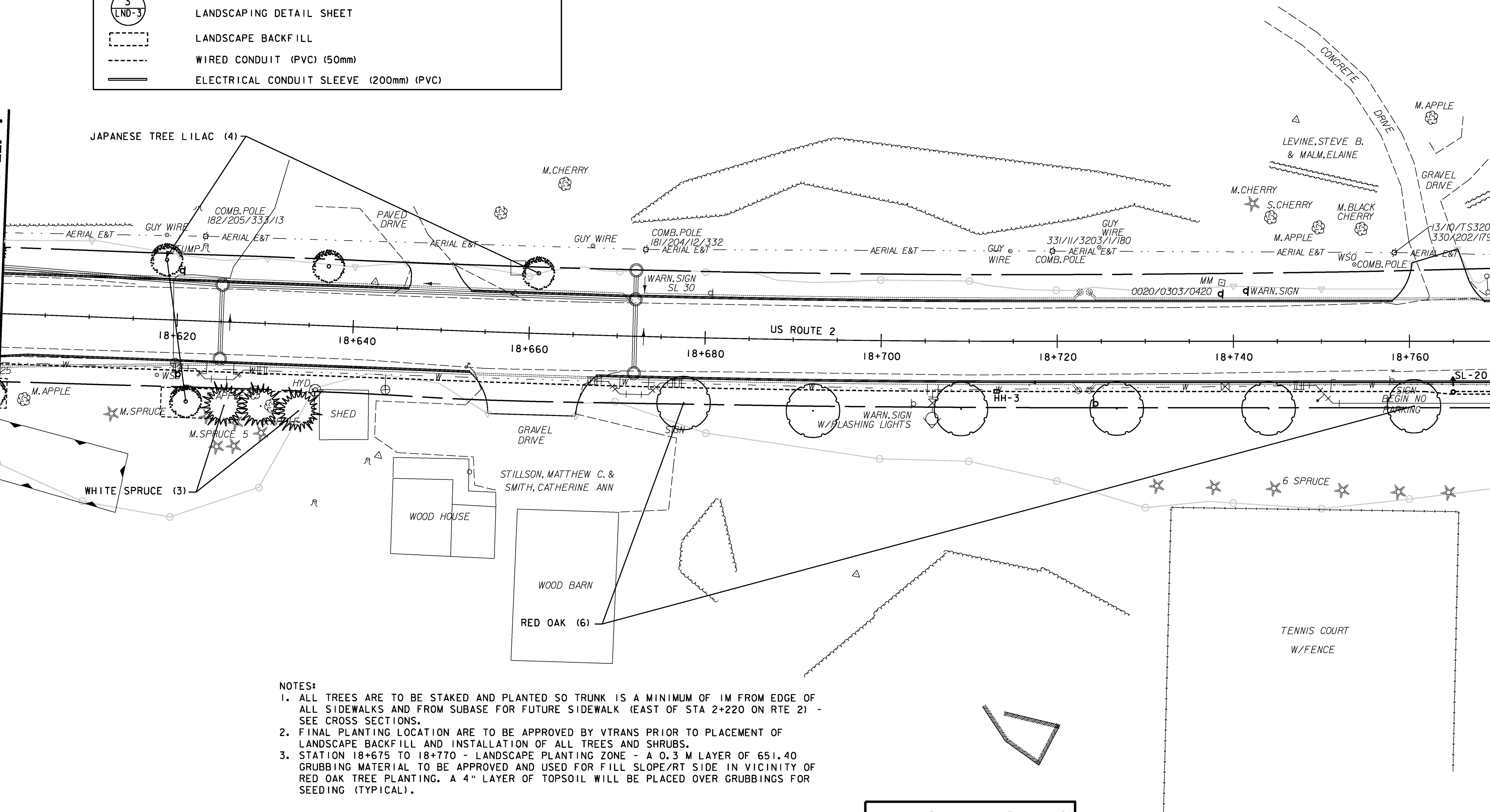
STA.	NO.	LOCATION	DESCRIPTION
18+625.7 - 18+634.1	3	RT	WHITE SPRUCE

**651.40 - GRUBBING MATERIAL**

STA.
18+673 - 18+770 RT



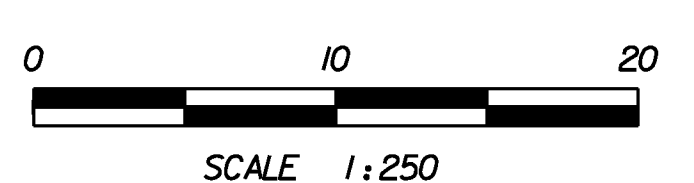
MATCH LINE - STA. 18+600 SEE SHEET LLP-1



MATCH LINE - STA. 18+770 SEE SHEET LLP-3

- NOTES:**
- ALL TREES ARE TO BE STAKED AND PLANTED SO TRUNK IS A MINIMUM OF 1M FROM EDGE OF ALL SIDEWALKS AND FROM SUBASE FOR FUTURE SIDEWALK (EAST OF STA 2+220 ON RTE 2) - SEE CROSS SECTIONS.
  - FINAL PLANTING LOCATION ARE TO BE APPROVED BY VTRANS PRIOR TO PLACEMENT OF LANDSCAPE BACKFILL AND INSTALLATION OF ALL TREES AND SHRUBS.
  - STATION 18+675 TO 18+770 - LANDSCAPE PLANTING ZONE - A 0.3 M LAYER OF 651.40 GRUBBING MATERIAL TO BE APPROVED AND USED FOR FILL SLOPE/RT SIDE IN VICINITY OF RED OAK TREE PLANTING. A 4" LAYER OF TOPSOIL WILL BE PLACED OVER GRUBBINGS FOR SEEDING (TYPICAL).

**REPLACEMENT SHEETS  
ISSUED 02/24/2012**



DATUM	
VERTICAL	NAVD88
HORIZONTAL	NAD83(92)

PROJECT NAME:	DANVILLE
PROJECT NUMBER:	F EGC 028-3(32)
FILE NAME:	...\\PlotFiles\078 1102.ptf
DESIGN SUPERVISOR:	GARY SANTY
DESIGNED BY:	STANTEC
LANDSCAPE & LIGHTING PLAN LLP-2	
PLOT DATE:	2/24/2012
DRAWN BY:	STANTEC
CHECKED BY:	STANTEC
SHEET	178 OF 306

STA 18+600 TO 18+770

2/24/2012 11:45:31 PM V:\953\active\18530033\_0092\Revised Plans\PlotFiles\078 1102.ptf